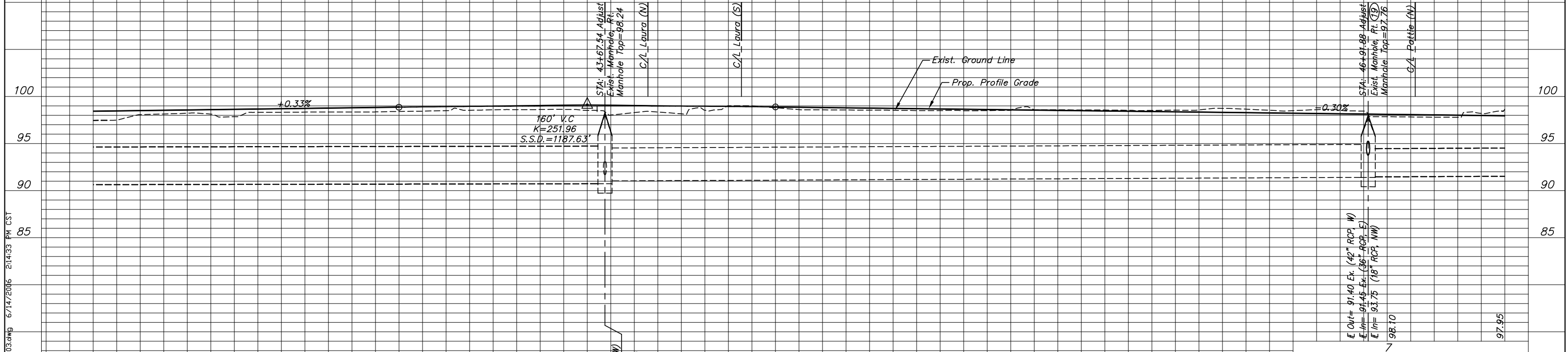
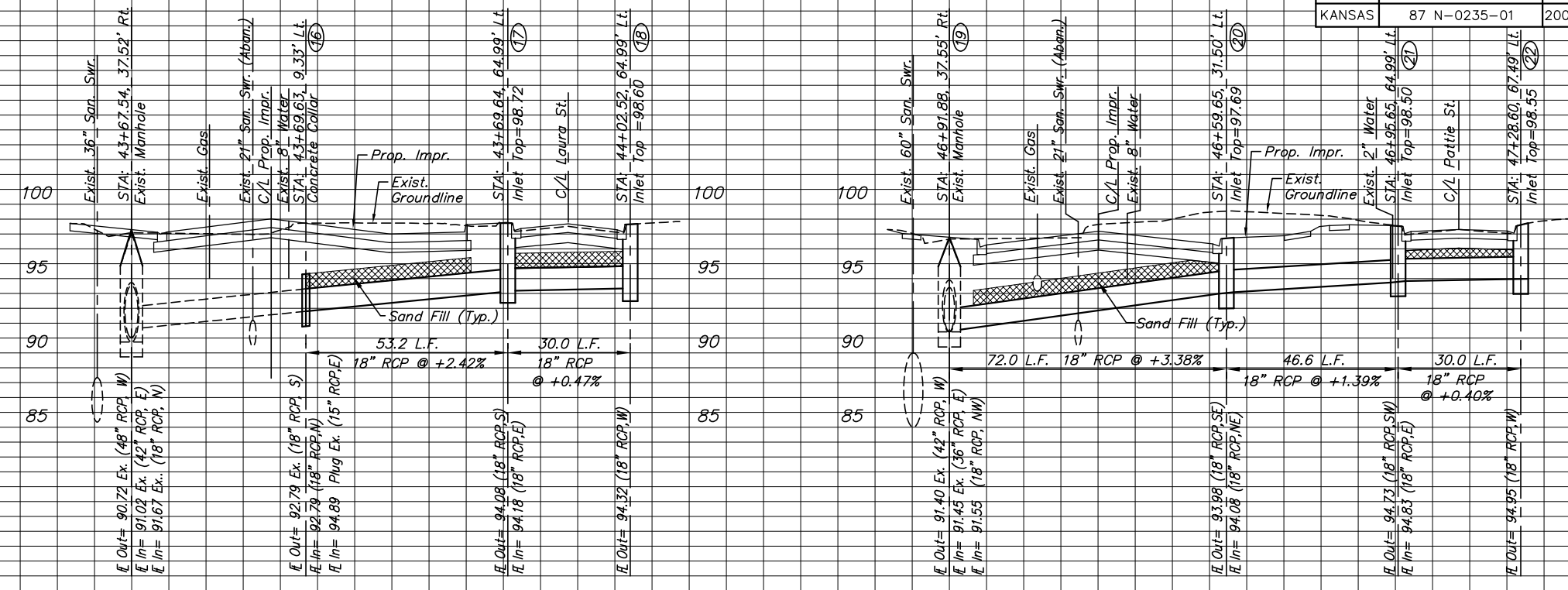


STATE	PROJECT NO.	YEAR	SHEET NO.	SHEETS
KANSAS	87 N-0235-01	2006	10	120



98.42	98.59	98.75	98.85 P.C. (+80)	98.91	98.99 P.I. (+60) P.I. Elev.=99.12	98.97	98.88 P.T. (+40)	98.85	98.70	98.55	98.40	98.25
			E Out= 90.72 Ex. (48" RCP, W) E In= 91.02 Ex. (42" RCP, E) E In= 91.67 Ex. (18" RCP, N)			E Out= 90.72 Ex. (48" RCP, W) E In= 91.02 Ex. (42" RCP, E) E In= 91.67 Ex. (18" RCP, N)						E Out= 91.40 Ex. (42" RCP, W) E In= 91.45 Ex. (36" RCP, E) E In= 91.55 (18" RCP, NW)
												E Out= 93.98 (18" RCP, SE) E In= 94.08 (18" RCP, NE)
												E Out= 94.73 (18" RCP, SW) E In= 94.83 (18" RCP, E)
												E Out= 94.95 (18" RCP, W) E In= 94.95 (18" RCP, W)

KANSAS DEPARTMENT OF TRANSPORTATION

PAWNEE IMPROVEMENTS
STA. 41+50 TO STA. 47+50

PROJECT NO. 87 N-0235-01 SEDGWICK CO.

M K E C ENGINEERING CONSULTANTS, INC.
WICHITA, KANSAS

DESIGNED BY: JRA	CHECKED BY: JRA
DRAWN BY: WJW	DATE: JULY 2004

SHEET 10 OF 120

J:\Civil\04222\dwg\prof\04222p03.dwg 6/14/2006 2:14:33 PM CST