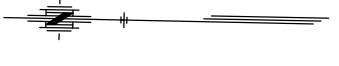
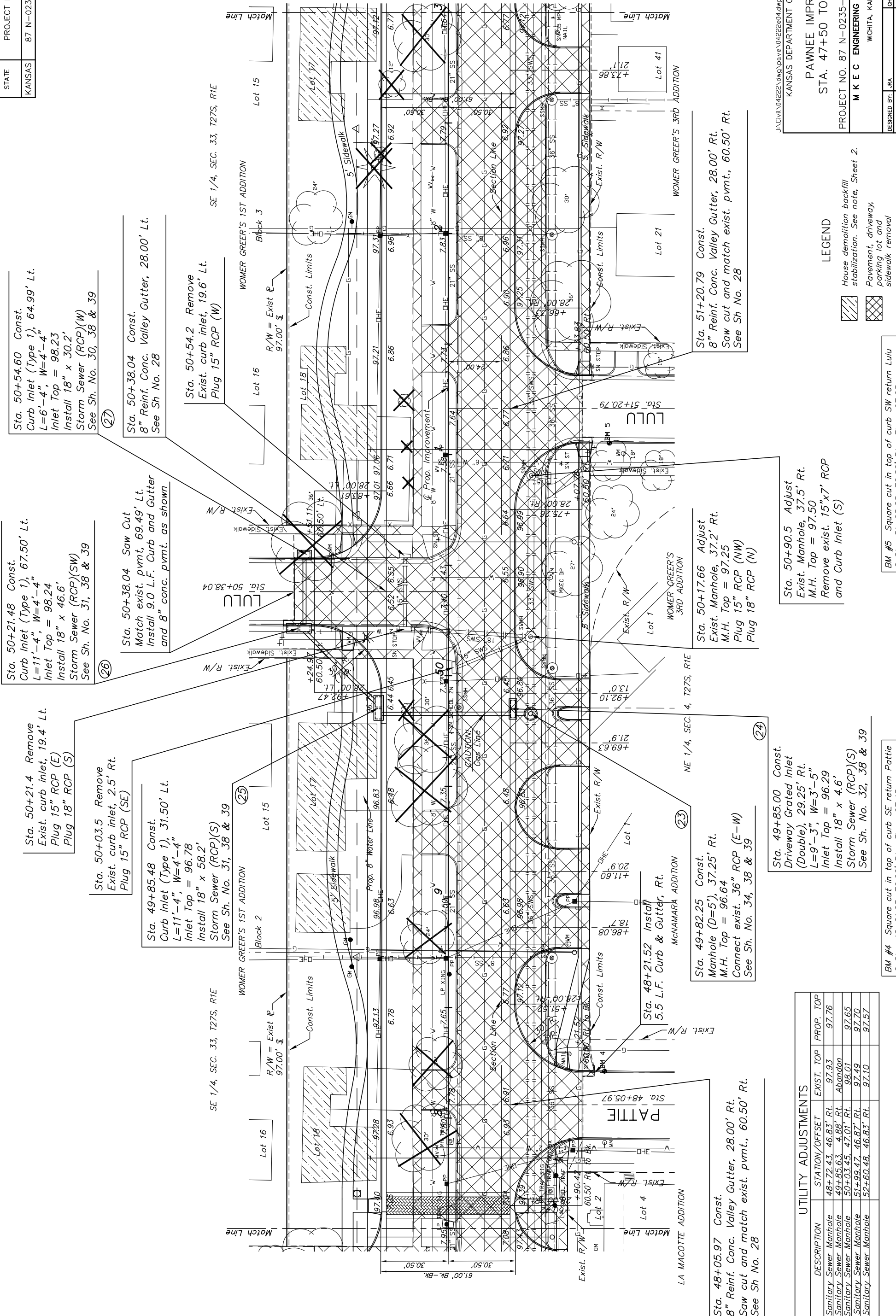


| | | | | |
|--------|--------------|------|-----------|--------|
| STATE | PROJECT NO. | YEAR | SHEET NO. | SHEETS |
| KANSAS | 87 N-0235-01 | 2006 | 11 | 120 |



Scale: 1"=20'



Sta. 50+54.60 Const.
Curb Inlet (Type 1), 64.99' Lt.
L=6'-4", W=4'-4"
Inlet Top = 98.23
Install 18" x 30.2'
Storm Sewer (RCP)(W)
See Sh. No. 30, 38 & 39

Sta. 50+21.48 Const.
Curb Inlet (Type 1), 67.50' Lt.
L=11'-4", W=4'-4"
Inlet Top = 98.24
Install 18" x 46.6'
Storm Sewer (RCP)(SW)
See Sh. No. 31, 38 & 39

Sta. 50+38.04 Const.
8" Reinf. Conc. Valley Gutter, 28.00' Lt.
See Sh No. 28

Sta. 50+38.04 Saw Cut
Match exist. pvmt, 69.49' Lt.
Install 9.0 L.F. Curb and Gutter
and 8" conc. pvmt. as shown

Sta. 50+54.2 Remove
Exist. curb inlet, 19.6' Lt.
Plug 15" RCP (W)

Sta. 50+03.5 Remove
Exist. curb inlet, 2.5' Rt.
Plug 15" RCP (SE)

Sta. 49+85.48 Const.
Curb Inlet (Type 1), 31.50' Lt.
L=11'-4", W=4'-4"
Inlet Top = 96.78
Install 18" x 58.2'
Storm Sewer (RCP)(S)
See Sh. No. 31, 38 & 39

Sta. 48+21.52 Install
5.5 L.F. Curb & Gutter, Rt.
See Sh. No. 34, 38 & 39

Sta. 49+82.25 Const.
Manhole (D=5'), 37.25' Rt.
M.H. Top = 96.64
Connect exist. 36" RCP (E-W)
See Sh. No. 34, 38 & 39

Sta. 49+85.00 Const.
Driveway Grated Inlet
(Double), 29.25' Rt.
L=9'-3", W=3'-5"
Inlet Top = 96.29
Install 18" x 4.6'
Storm Sewer (RCP)(S)
See Sh. No. 32, 38 & 39

Sta. 51+20.79 Const.
8" Reinf. Conc. Valley Gutter, 28.00' Rt.
Saw cut and match exist. pvmt., 60.50' Rt.
See Sh No. 28

Sta. 50+90.5 Adjust
Exist. Manhole, 37.5' Rt.
M.H. Top = 97.50
Remove exist. 15"x7' RCP
and Curb Inlet (S)

| UTILITY ADJUSTMENTS | | | |
|------------------------|----------------------|------------|-----------|
| DESCRIPTION | STATION/OFFSET | EXIST. TOP | PROP. TOP |
| Sanitary Sewer Manhole | 48+72.43, 46.83' Rt. | 97.93 | 97.76 |
| Sanitary Sewer Manhole | 49+85.63, 4.88' Rt. | Abandon | 97.65 |
| Sanitary Sewer Manhole | 50+03.45, 47.01' Rt. | 98.01 | 97.49 |
| Sanitary Sewer Manhole | 51+99.47, 46.87' Rt. | 97.49 | 97.70 |
| Sanitary Sewer Manhole | 52+60.48, 46.83' Rt. | 97.10 | 97.57 |

- LEGEND
- House demolition backfill stabilization. See note, Sheet 2.
 - Pavement, driveway, parking lot and sidewalk removal

BM #5 Square cut in top of curb SW return Lulu
@ Sta. 51+05.25, 72.82' Rt. El. = 97.93

BM #4 Square cut in top of curb SE return Pattie
@ Sta. 48+21.23, 70.66' Rt. El. = 97.45

KANSAS DEPARTMENT OF TRANSPORTATION
PAWNEE IMPROVEMENTS
STA. 47+50 TO STA. 53+00
PROJECT NO. 87 N-0235-01 SEDGWICK CO.
M K E C ENGINEERING CONSULTANTS, INC.
WICHITA, KANSAS

DESIGNED BY: LRA
DRAWN BY: WJW
CHECKED BY: LRA
DATE: JULY 2004
SHEET 11 OF 120