

Sta. 53+61.93 Saw Cut
Match exist. pvmt., 69.49' Lt.
Install 9.0 L.F Curb and Gutter
and 8" conc. pvmt. as shown.

Sta. 53+61.93 Const.
8" Reinf. Conc. Valley Gutter, 28.00' Lt.
See Sh. No. 28

Sta. 56+74.83 Const.
8" Reinf. Conc. Valley Gutter, 28.00' Lt.
See Sh. No. 28

P.C. Sta. 57+27.89
1. N=1672726.3395, E=1654377.4031

P.T. Sta. 58+17.01
1. N=1672723.1807, E=1654466.4239

STATE	PROJECT NO.	YEAR	SHEET NO.	SHEETS
KANSAS	87 N-0235-01	2006	13	120

Sta. 53+45.26 Const.
Curb Inlet (Type 1), 64.99' Lt.
L=6'-4", W=4'-4"
Inlet Top = 97.81
Install 18" x 98.0'
Storm Sewer (RCP)(S)
into exist. manhole
See Sh. No. 30, 38 & 39

Sta. 53+78.60 Const.
Curb Inlet (Type 1), 67.50' Lt.
L=11'-4", W=4'-4"
Inlet Top = 97.86
Install 18" x 30.4'
Storm Sewer (RCP)(W)
See Sh. No. 31, 38 & 39

Sta. 56+58.38 Const.
Curb Inlet (Type 1), 64.99' Lt.
L=6'-4", W=4'-4"
Inlet Top = 97.63
Install 18" x 48.4'
Storm Sewer (RCP)(SW)
See Sh. No. 30, 38 & 39

Sta. 56+74.83 Saw Cut
Match exist. pvmt., 69.50' Lt.
Install 9.0 L.F Curb and Gutter
and 8" conc. pvmt. as shown.

Remove and Replace 15" x 26.9'
Storm Sewer (RCP)(S). Remove
and Replace Curb and Gutter as
shown. Connect to Exist. Inlet.

Sta. 56+91.28 Const.
Curb Inlet (Type 1), 64.99' Lt.
L=6'-4", W=4'-4"
Inlet Top = 97.63
Install 18" x 30.0'
Storm Sewer (RCP)(W)
See Sh. No. 30, 38 & 39

Sta. 53+45.1 Remove
Exist curb inlet, 19.8' Lt.

Sta. 53+78.2 Remove
Exist curb inlet, 21.1' Lt.
Plug 15" RCP (W)

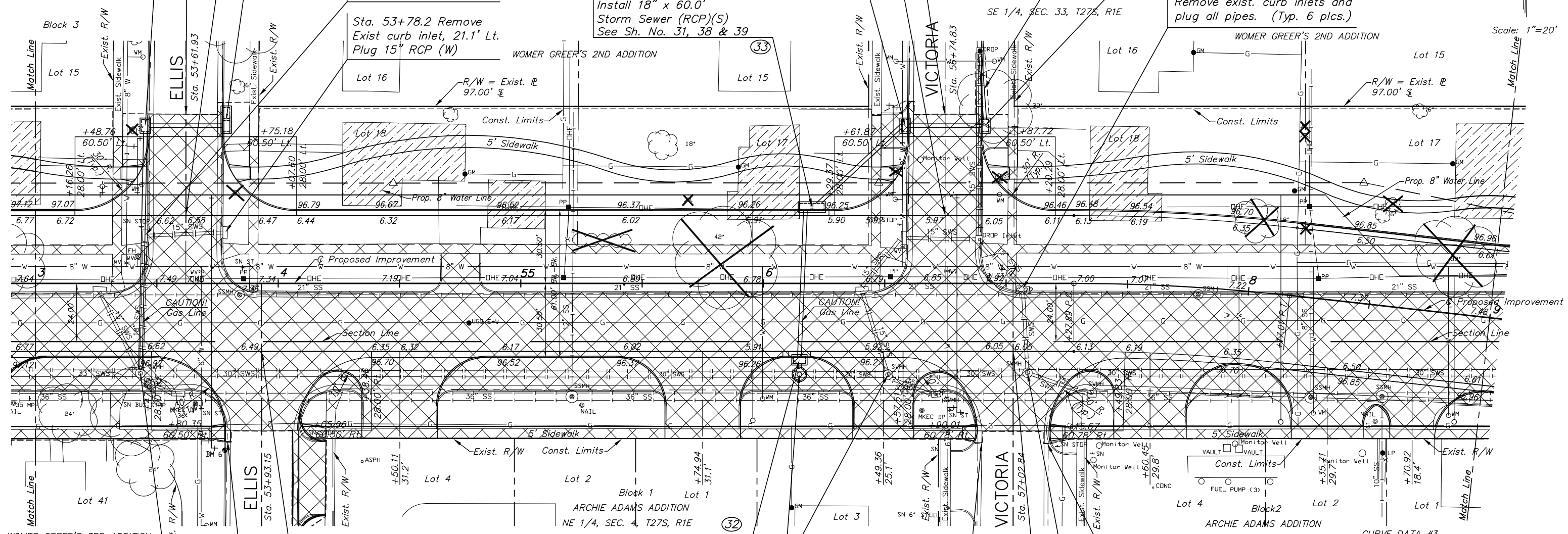
Sta. 56+20.00 Const.
Curb Inlet (Type 1), 31.50' Lt.
L=11'-4", W=4'-4"
Inlet Top = 96.25
Install 18" x 60.0'
Storm Sewer (RCP)(S)
See Sh. No. 31, 38 & 39

Remove exist. curb inlets and
plug all pipes. (Typ. 6 plcs.)

WOMER GREER'S 1ST ADDITION

WOMER GREER'S 2ND ADDITION

WOMER GREER'S 2ND ADDITION



Sta. 53+43.19 Adjust
Exist. Manhole, 37.0' Rt.
M.H. Top = 97.12
Remove exist. 18"x54' RCP (N)
Remove curb inlet (NW) and
plug exist. 15" RCP
Remove curb inlet (SE) and
plug exist. 15" RCP
See Sh. No. 38 & 39

Sta. 53+93.15 Const.
8" Reinf. Conc. Valley Gutter, 28.00' Rt.
Saw cut and match exist. pvmt., 60.50' Rt.
See Sh. No. 28

Sta. 56+14.80 Const.
Curb Inlet (Type 1), 31.50' Rt.
L=6'-4", W=4'-4"
Inlet Top = 96.25
Install 18" x 2.2'
Storm Sewer (RCP)(S)
See Sh. No. 30, 38 & 39

Sta. 56+51.29 Adjust
Exist. Manhole, 37.60' Rt.
M.H. Top = 06.31
Plug exist. 15" RCP (SE)
Plug exist. 15" RCP (NW)

Sta. 56+90.01 Install
4.9 L.F. Curb & Gutter, Rt.

Sta. 57+15.67 Install
5.1 L.F. Curb & Gutter, Rt.

Sta. 57+08.78 Adjust
Exist. Manhole, 36.85' Rt.
M.H. Top = 96.04
Plug exist. 15" RCP (SE)
Plug exist. 15" RCP (N)

DESCRIPTION	STATION/OFFSET	EXIST. TOP	PROP. TOP
Sanitary Sewer Manhole	53+84.11, 4.72' Rt.	Abandon	
Sanitary Sewer Manhole	55+21.06, 46.67' Rt.	97.90	97.37
Monitor Well	56+64.64, 51.05' Lt.	Abandon by "Others"	
Sanitary Sewer Manhole	57+79.39, 2.90' Rt.	Abandon	
Sanitary Sewer Manhole	58+30.33, 40.69' Rt.	96.45	96.92
Sanitary Sewer Manhole	58+59.47, 37.19' Rt.	96.50	96.85

Sta. 56+14.80 Const.
Manhole (D=5'), 37.52' Rt.
M.H. Top = 96.61
Connect exist. 30" RCP (E-W)
See Sh. No. 34, 38 & 39

Sta. 57+02.84 Const.
8" Reinf. Conc. Valley Gutter, 28.00' Rt.
Saw cut and match exist. pvmt., 60.78' Rt.
See Sh. No. 28

CURVE DATA #3
P.I. Sta. 57+72.50 (Bk.)=
P.I. Sta. 57+72.40 (Ahd.)
Δ = 6'22'59" Rt.
T = 44.61'
R = 800.00'
L = 89.12'
E = 1.24'
N.C.

	House demolition backfill stabilization. See note, Sheet 2.
	Pavement, driveway, parking lot and sidewalk removal

BM #6 Square cut in top of curb SW return Ellis
@ Sta. 53+78.03, 68.75' Rt. El. = 97.60

J:\Civil\04222\dwg\pave\04222e05.dwg 07/06/2006 02:51:49 PM CST

KANSAS DEPARTMENT OF TRANSPORTATION

PAWNEE IMPROVEMENTS
STA. 53+00 TO STA. 59+00

PROJECT NO. 0235-01 SEDGWICK CO.

M K E C ENGINEERING CONSULTANTS, INC.
WICHITA, KANSAS

DESIGNED BY: JRA	CHECKED BY: JRA
DRAWN BY: WNJ	DATE: JULY 2004

SHEET 13 OF 120