

STATE	PROJECT NO.	YEAR	SHEET NO.	SHEETS
KANSAS	87 N-0235-01	2006	15	120

Sta. 59+72.68 Const.
8" Reinf. Conc. Valley Gutter, 28.00' Lt.
See Sh. No. 28

Sta. 59+51.60 Const.
Curb Inlet (Type 1), 68.19' Lt.
L=6'-4", W=4'-4"
Inlet Top = 97.40
Install 15" x 81.4'
Storm Sewer (RCP)(S)
Connect to exist. manhole
See Sh. No. 30, 38 & 39

Sta. 59+54.53 Remove
Exist curb inlet, 40.7' Lt.
Plug exist. 12" RCP (E)

Sta. 59+67.48 Saw Cut
Match exist. pvmt., 74.49' Lt.
Install 9.0 L.F. Curb and Gutter
and 8" conc. pvmt. as shown.

Sta. 59+84.36 Const.
Curb Inlet (Type 1), 71.86' Lt.
L=6'-4", W=4'-4"
Inlet Top = 97.40
Install 15" x 30.0'
Storm Sewer (RCP)(W)
See Sh. No. 30, 38 & 39

Sta. 59+87.12 Remove
Exist. curb inlet, 44.6' Lt.
Plug exist. 12" RCP (W)

Sta. 60+99.36 Cut and Cap
exist. 21" Sanitary Sewer Line,
Lt. Abandon sanitary sewer
line and manholes (W) to
beginning of Project.

Sta. 60+99.36 END
Proj. No. 87 N-0235-01

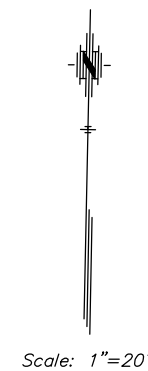
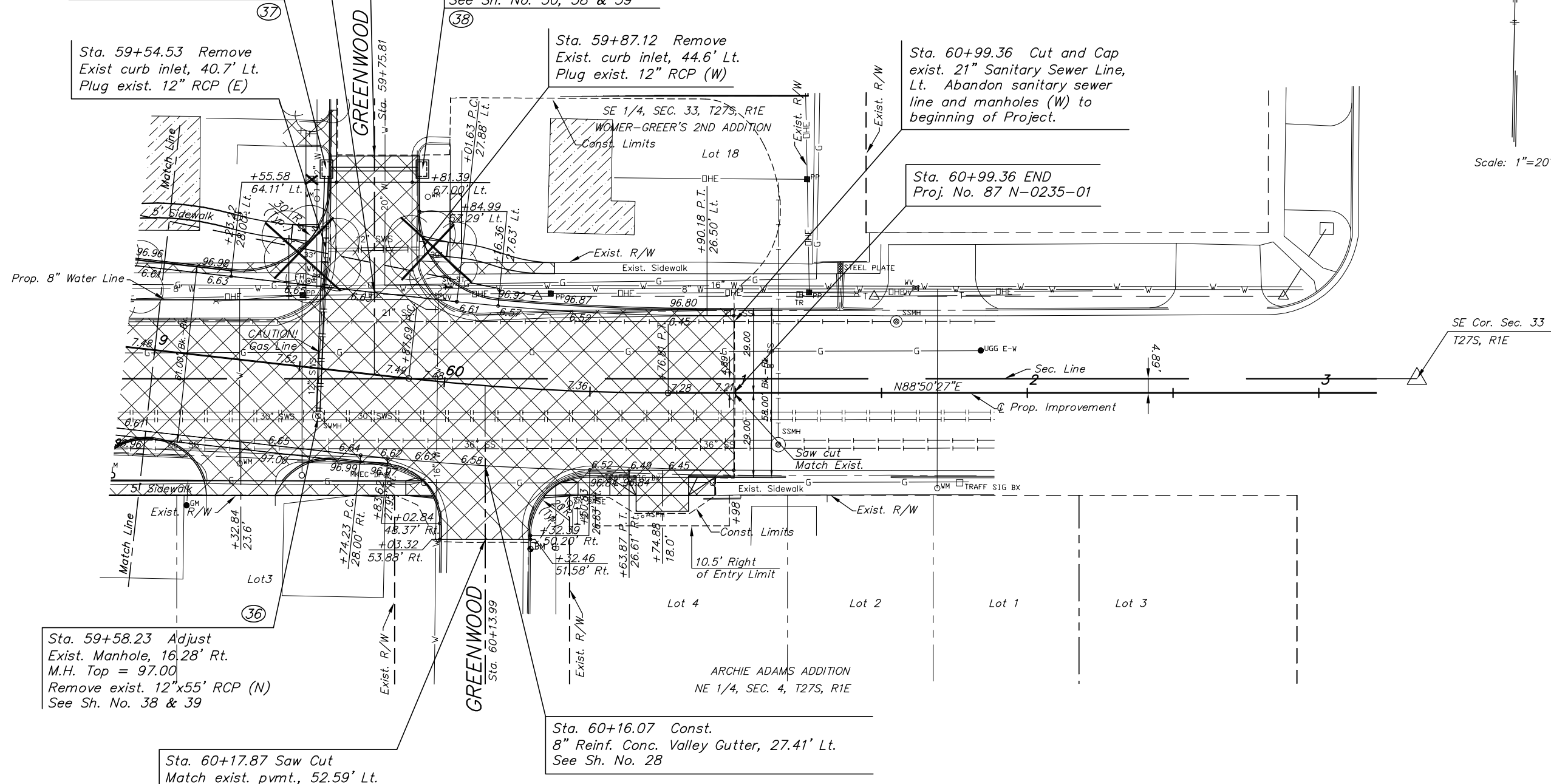
P.C. Sta. 59+87.69
1. N=1672707.6419, E=1654636.3905

P.T. Sta. 60+76.81
1. N=1672704.4832, E=1654725.4109

Curve Data Left
Curb High Edge
 $\Delta = 6'22'59''$ Rt.
T = 43.05'
R = 772.00'
L = 86.00'
E = 1.20'
N.C.

C/L Curve Data
P.I. Sta. 60+32.30 (Bk.)=
P.I. Sta. 60+32.20 (Ahd.)
 $\Delta = 6'22'59''$ Rt.
T = 44.61'
R = 800.00'
L = 89.12'
E = 1.24'
N.C.

Curve Data Right
Curb High Edge
 $\Delta = 6'22'59''$ Rt.
T = 46.17'
R = 828.00'
L = 92.24'
E = 1.29'
N.C.



Sta. 59+58.23 Adjust
Exist. Manhole, 16.28' Rt.
M.H. Top = 97.00
Remove exist. 12"x55' RCP (N)
See Sh. No. 38 & 39

Sta. 60+17.87 Saw Cut
Match exist. pvmt., 52.59' Lt.

Sta. 60+16.07 Const.
8" Reinf. Conc. Valley Gutter, 27.41' Lt.
See Sh. No. 28

BM #8 Square cut in top of curb SE return Greenwood
Sta. 60+32.61, 54.86' Rt. Elev.=96.95

- SE Cor. Sec. 33, T27S, R1E
1. Found rebar
2. 4.89' Lt., Sta. 63+33.55
3. N 1672714.5700, E 1654982.0037

UTILITY ADJUSTMENTS		
DESCRIPTION	STATION/OFFSET	REMARKS
Water Valve Box	59+94.85, 29.71' Lt.	Adjust Top

- LEGEND**
- House demolition backfill stabilization. See note, Sheet 2.
 - Pavement, driveway, parking lot and sidewalk removal

J:\Civil\042222\dwg\pave\042222e06.dwg 07/06/2006 02:52:23 PM CST

KANSAS DEPARTMENT OF TRANSPORTATION

PAWNEE IMPROVEMENTS
STA. 59+00 TO STA. 62+50

PROJECT NO. 87 N-0235-01 SEDGWICK CO.

M K E C ENGINEERING CONSULTANTS, INC.
WICHITA, KANSAS

DESIGNED BY: JRA	CHECKED BY: JRA
DRAWN BY: WNJ	DATE: JULY 2004 SHEET 15 OF 120