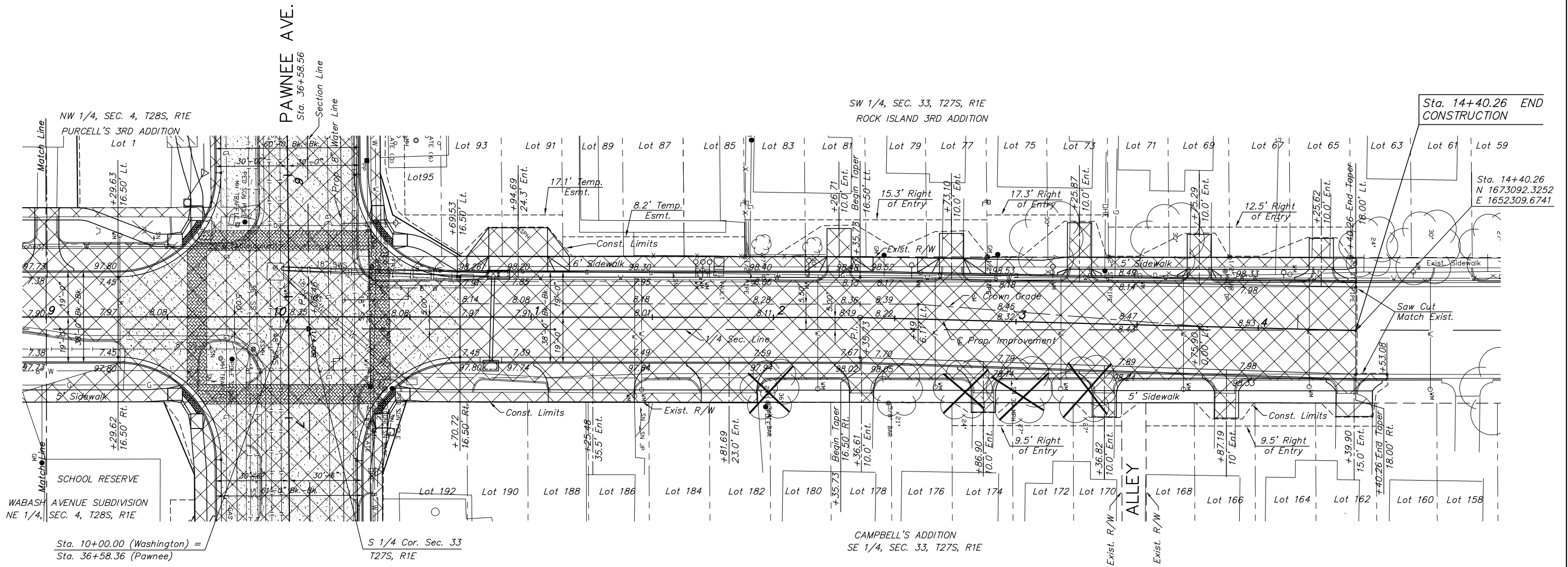
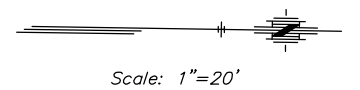


P.I. Sta. 10+08.46
 1. N=1672660.5621, E=1652310.9378
 2. Not Set

P.I. Sta. 11+35.73
 1. N=1672887.8037, E=1652307.5372
 2. Not Set

P.I. Sta. 14+40.26
 1. N=1673092.3252, E=1652309.6741
 2. Not Set

| | | | | |
|--------|--------------|------|-----------|--------|
| STATE | PROJECT NO. | YEAR | SHEET NO. | SHEETS |
| KANSAS | 87 N-0235-01 | 2006 | 19 | 120 |



| UTILITY ADJUSTMENTS | | |
|---------------------|----------------------|----------------------|
| DESCRIPTION | STATION/OFFSET | REMARKS |
| Water Meter Vault | 11+77.45, 18.90' Lt. | Relocate by "Others" |

- LEGEND**
- House demolition backfill stabilization. See note, Sheet 2.
 - Pavement, driveway, parking lot and sidewalk removal

BM #11 Square cut in top of curb SW Cor. Blake & Washington
 Sta. 16+39.98, 19.73' Lt. Elev.=98.955

J:\Civil\04222\dwg\pave\04222e08.dwg 07/06/2006 03:09:04 PM CST

KANSAS DEPARTMENT OF TRANSPORTATION

WASHINGTON STREET
 STA. 9+00 TO STA. 14+50

PROJECT NO. 87 N-0235-01 SEDGWICK CO.

M K E C ENGINEERING CONSULTANTS, INC.
 WICHITA, KANSAS

| | |
|------------------|---------------------------------|
| DESIGNED BY: JRA | CHECKED BY: JRA |
| DRAWN BY: WNJ | DATE: JULY 2004 SHEET 19 OF 120 |