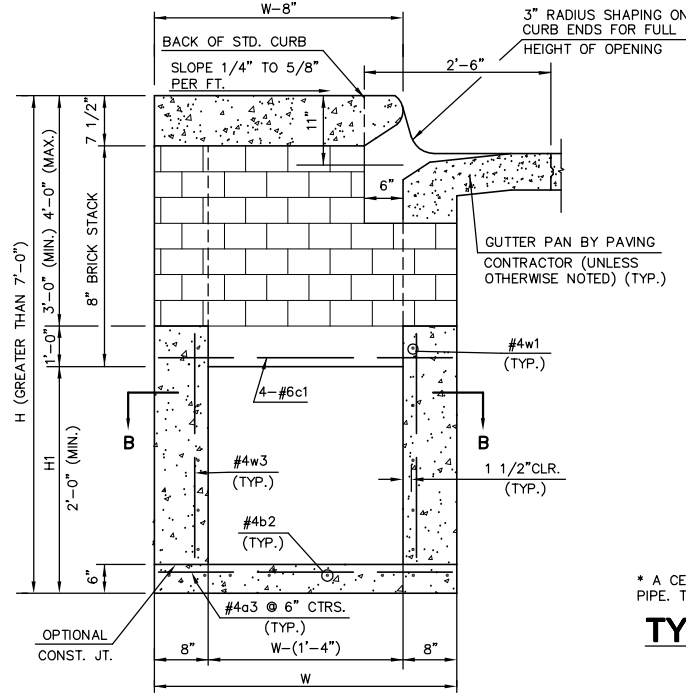
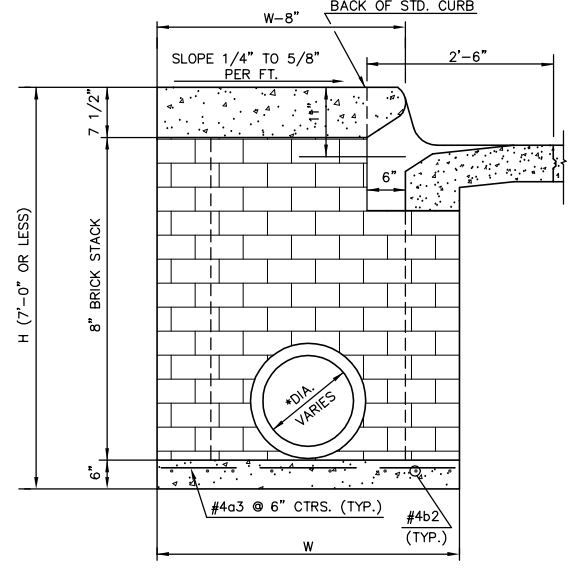


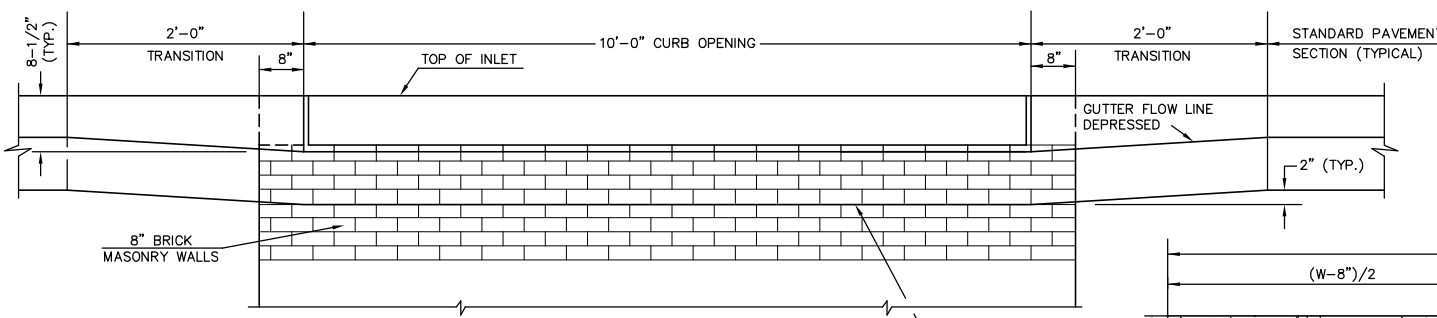
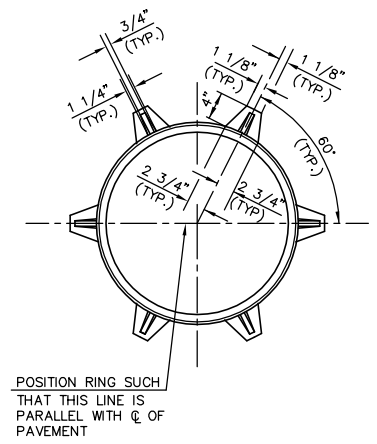
SLAB REINFORCING NOT SHOWN SHOWING SLAB REINFORCING
PLAN



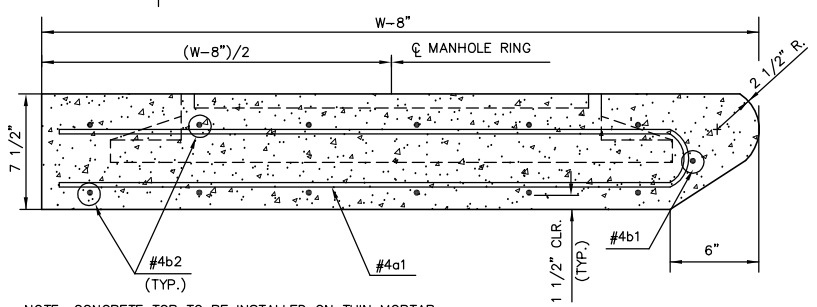
TYPICAL INLET SECTION AT CENTER WALL
(REINFORCED CONCRETE WALLS)



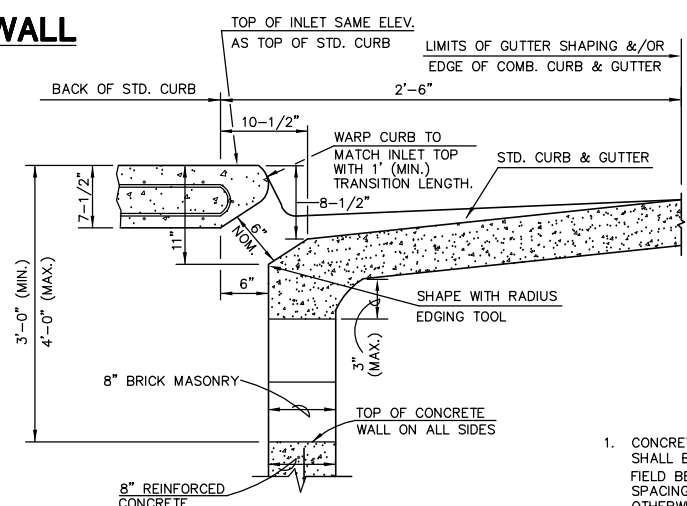
* A CENTER WALL OPENING SHALL BE PROVIDED BY MEANS OF A SECTION OF REINFORCED CONCRETE PIPE. THE MINIMUM DIAMETER USED SHALL BE THAT OF THE OUTLET PIPE.
TYPICAL INLET SECTION AT CENTER WALL
(MASONRY WALLS)



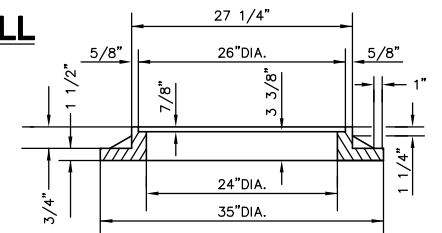
ELEVATION



SECTION A-A



SECTION C-C

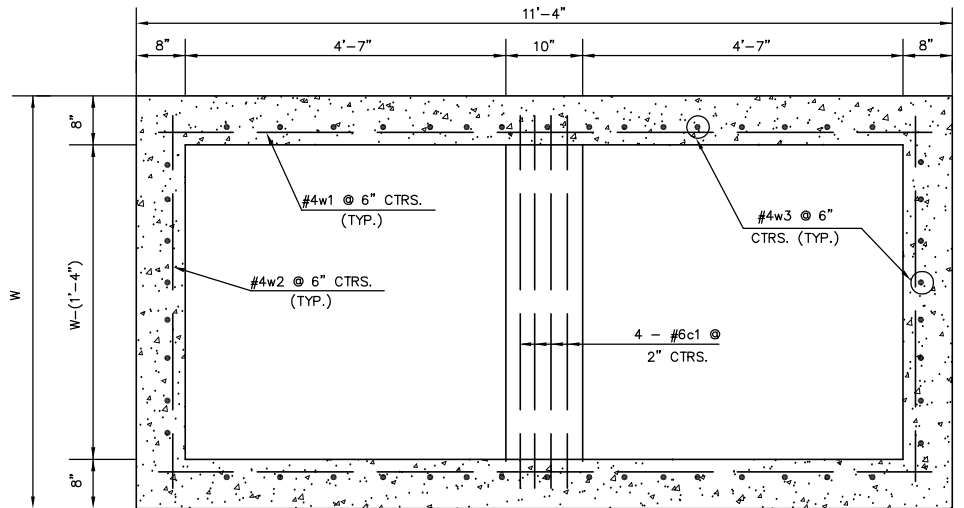


INLET FRAME
WT.=180 LBS.

SEE CITY OF WICHITA STANDARD MANHOLE FRAME AND COVER DETAIL SHEET FOR COVER DETAILS TO BE USED WITH INLET FRAME.

GENERAL NOTES

- CONCRETE SHALL BE C.O.W. STANDARD PAVING MIX. ALL EXPOSED EDGES SHALL BE FINISHED WITH AN EDGING TOOL. REINFORCING BARS SHALL BE FIELD BENT OR CUT TO CLEAR PIPES. ALL BARS ARE #4 BARS AT 6" SPACING AND SHALL HAVE A MINIMUM CLEARANCE OF 1-1/2" UNLESS OTHERWISE NOTED. FLOORS OF INLET SHALL BE SHAPED WITH 8 SACK SAND MIX CONCRETE TO INCREASE HYDRAULIC EFFICIENCY SUCH THAT THE INLET WILL BE SELF CLEANING BETWEEN ALL INLET AND/OR OUTFALL PIPE(S). THE CONTRACTOR WILL BE REQUIRED TO CONSTRUCT 8" BRICK MASONRY WALLS BETWEEN THE CONCRETE INLET BASE AND TOP ON THIS INLET WHEN H= 7'-0" OR LESS AND W= 6'-4" OR LESS.
- THE ENDS OF ALL PIPES INSTALLED IN INLETS SHALL BE CUT OFF FLUSH WITH THE INSIDE FACE OF THE INLET WALL.



SECTION B-B

SLAB AND FLOOR REINFORCING

| MARK | SIZE | W=4'-4" | | W=5'-4" | | W=6'-4" | | W=7'-4" | | W=8'-4" | |
|------|------|---------|-----------|---------|-----------|---------|------------|---------|------------|---------|------------|
| | | NO. | LENGTH | NO. | LENGTH | NO. | LENGTH | NO. | LENGTH | NO. | LENGTH |
| a1 | #4 | 13 | 6'-7 1/4" | 13 | 8'-7 1/4" | 13 | 10'-7 1/4" | 13 | 12'-7 1/4" | 13 | 14'-7 1/4" |
| a2 | #4 | 2 | 6'-0" | 2 | 8'-0" | 2 | 10'-0" | 2 | 12'-0" | 2 | 14'-0" |
| a3 | #4 | 20 | 4'-1" | 20 | 5'-1" | 20 | 6'-1" | 20 | 7'-1" | 20 | 8'-1" |
| b1 | #4 | 1 | 9'-8" | 1 | 9'-8" | 1 | 9'-8" | 1 | 9'-8" | 1 | 9'-8" |
| **b2 | #4 | 18 | 11'-1" | 24 | 11'-1" | 30 | 11'-1" | 36 | 11'-1" | 42 | 11'-1" |

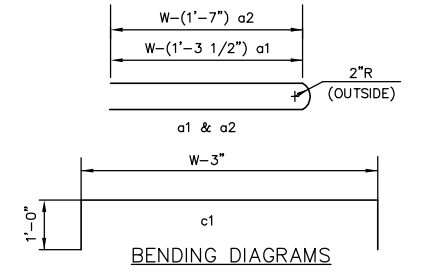
WALL REINFORCING

| MARK | SIZE | W=4'-4" | | W=5'-4" | | W=6'-4" | | W=7'-4" | | W=8'-4" | |
|------|------|---------|--------|---------|--------|---------|--------|---------|--------|---------|--------|
| | | NO. | LENGTH | NO. | LENGTH | NO. | LENGTH | NO. | LENGTH | NO. | LENGTH |
| c1 | #6 | 4 | 6'-1" | 4 | 7'-1" | 4 | 8'-1" | 4 | 9'-1" | 4 | 10'-1" |
| w1 | #4 | ① | 11'-1" | ① | 11'-1" | ① | 11'-1" | ① | 11'-1" | ① | 11'-1" |
| w2 | #4 | ① | 4'-1" | ① | 5'-1" | ① | 6'-1" | ① | 7'-1" | ① | 8'-1" |
| w3 | #4 | ② | ③ | ② | ③ | ② | ③ | ② | ③ | ② | ③ |

** FIELD BEND OR CUT REINFORCING AS REQUIRED FOR CLEARANCE
① 4(H1-6")
② 40+4(W-1)
③ H1-(9")

STANDARD CURB INLET PRECAST TOPS

| W | PRE-CAST TOP SIZE | PIPE SIZE | CU. YD. CONC. |
|-------|---------------------|---------------|---------------|
| 4'-4" | 3'-8"x11'-4"x7 1/2" | 21" & SMALLER | ± 0.83 |
| 5'-4" | 4'-8"x11'-4"x7 1/2" | 24" & 30" | ± 1.09 |
| 6'-4" | 5'-8"x11'-4"x7 1/2" | 36" & 42" | ± 1.35 |
| 7'-4" | 6'-8"x11'-4"x7 1/2" | 48" & 54" | ± 1.61 |
| 8'-4" | 7'-8"x11'-4"x7 1/2" | 60" & 66" | ± 1.87 |



BENDING DIAGRAMS

J:\Civil\04222(dwg)\Details\Inlet_Type1-2.dwg 11/24/2004 10:30:48 AM CST

KANSAS DEPARTMENT OF TRANSPORTATION
STANDARD TYPE 1 CURB INLET
OPENING = 6" x 10'-0"
PROJECT NO. 87 N-0235-01 SEDGWICK CO.
M K E C ENGINEERING CONSULTANTS, INC.
WICHITA, KANSAS