

STATE	PROJECT NO.	YEAR	SHEET NO.	SHEETS
KANSAS	87 N-0235-01	2006	41	120

Sta. 0+52.09, Line 1=  
B/L Sta. 30+88.14, 25.62' Lt.  
1-8"x8" Tapping Sleeve & Valve  
Furnished & Installed by City of  
Wichita Water Dept.  
Valve Box El.=xxxx.xx

Sta. 2+45.08, Line 1=  
B/L Sta. 32+62.98,  
16.60' Lt.  
1-Fire Hydrant Assy.  
L=21.34  
1-8" Valve Assy. (W)  
Valve Box El.=97.03

Sta. 2+69.38, Line 1=  
B/L Sta. 32+87.29, 17.24' Lt.  
1-8"x8" DI CL MJ Tee (N)  
1-8" Anch. Valve Assy. (N)  
(MJ Gate Valve)  
Valve Box El.=96.90

Sta. 0+65.00, Line 1=  
B/L Sta. 30+88.16, 12.71' Lt.  
1-8" DI CL MJ 90° Bend  
2.00 L.F. of 8" DI CL Pipe (W)  
1-8" MJ Cap

12.91 L.F. of 8" Pipe  
180.08 L.F. of 8" Pipe

15.84 L.F. of 8" Pipe

332.38 L.F. of 8" Pipe

8.47 L.F. of 8" Pipe

Remove and Replace  
68.4 S.Y. of Pavement  
to Match Existing. See  
Permanent Patch Detail  
on Sht. 2

CAUTION!!!  
Exist. Gas

① Replace Meter Box and Setter with a minimum 1" Long or Short  
Service as required. New service line to be connected to the  
relocated 8" Water Main running along the north side of Pawnee  
Avenue. Setter to be connected to existing consumer's water service.

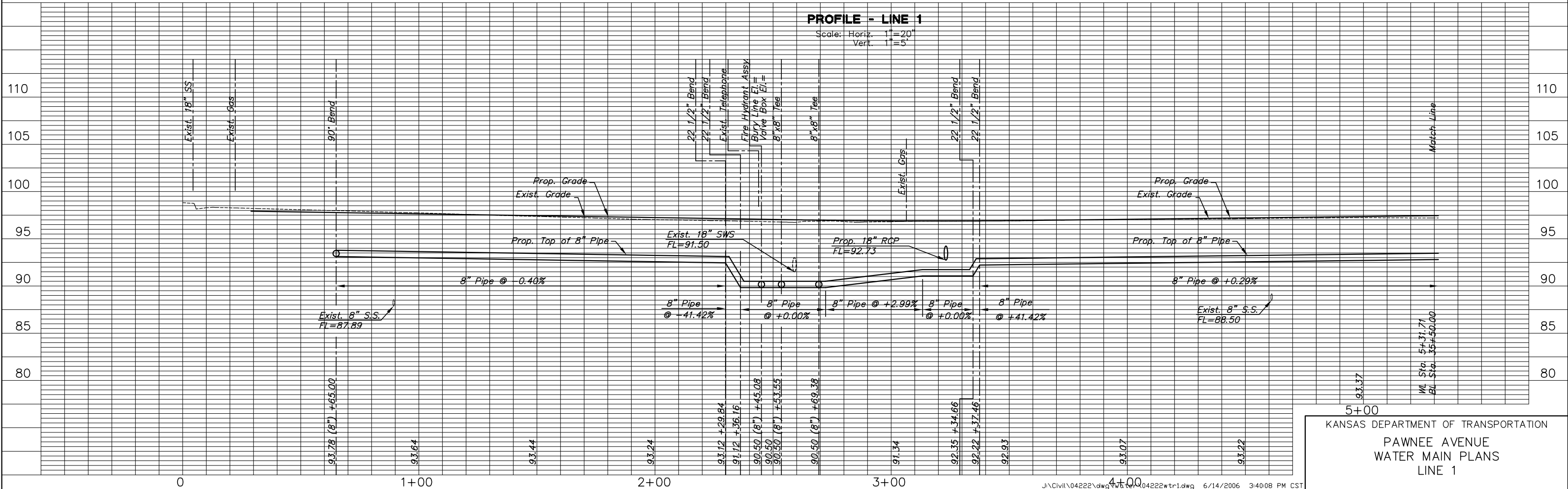
1-Short Services  
0-Long Services

Sta. 2+53.55, Line 1=  
B/L Sta. 32+71.45, 16.82' Lt.  
1-8"x8" DI CL MJ Tee (S)  
1-8" Anch. Valve Assy. (S)  
(MJ Gate Valve)  
Valve Box El.=97.06

PLAN - LINE 1

PROFILE - LINE 1

Scale: Horiz. 1"=20'  
Vert. 1"=5'



KANSAS DEPARTMENT OF TRANSPORTATION  
PAWNEE AVENUE  
WATER MAIN PLANS  
LINE 1