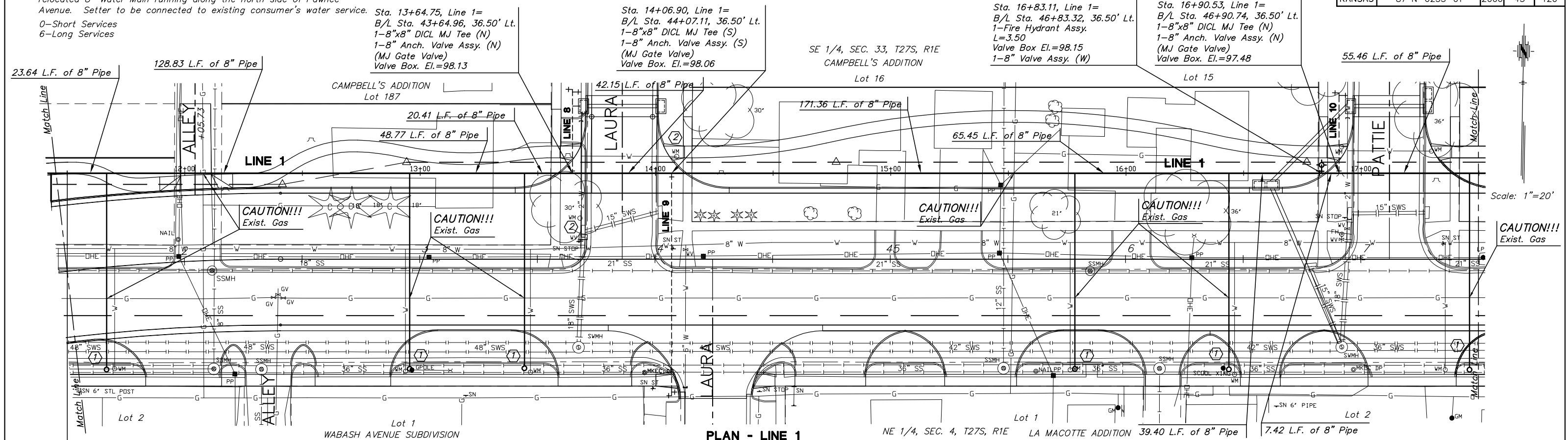


① Replace Meter Box and Setter with a minimum 1" Long or Short Service as required. New service line to be connected to the relocated 8" Water Main running along the north side of Pawnee Avenue. Setter to be connected to existing consumer's water service.
 0-Short Services
 6-Long Services

② City of Wichita to shut off water service and remove the water meter, vault, lid and setter. The Contractor is responsible for coordinating which services are to be removed and when.

STATE	PROJECT NO.	YEAR	SHEET NO.	SHEETS
KANSAS	87 N-0235-01	2006	43	120



KANSAS DEPARTMENT OF TRANSPORTATION
 PAWNEE AVENUE
 WATER MAIN PLANS
 LINE 1