

Sta. 17+81.75, Line 1=
B/L Sta. 47+81.96, 36.50' Lt.
1-8"x8" DICL MJ Tee (S)
1-8" Anch. Valve Assy. (S)
(MJ Gate Valve)
Valve Box. El.=97.90

Lot 16
Block 2
WOMER GREER'S 1ST ADDITION

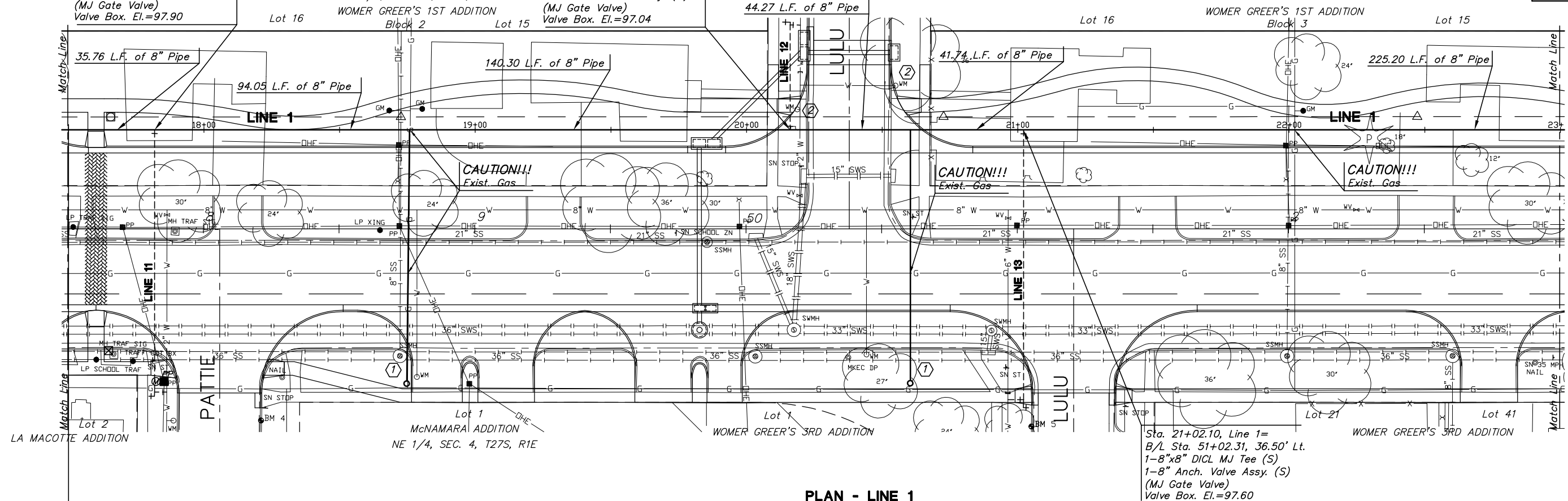
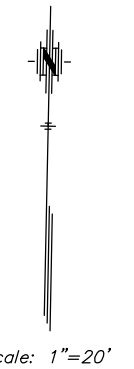
Sta. 20+16.09, Line 1=
B/L Sta. 50+16.30, 36.50' Lt.
1-8"x8" DICL MJ Tee (N)
1-8" Anch. Valve Assy. (N)
(MJ Gate Valve)
Valve Box. El.=97.04

② City of Wichita to shut off water service and remove the water meter, vault, lid and setter. The Contractor is responsible for coordinating which services are to be removed and when.

① Replace Meter Box and Setter with a minimum 1" Long or Short Service as required. New service line to be connected to the relocated 8" Water Main running along the north side of Pawnee Avenue. Setter to be connected to existing consumer's water service.

STATE	PROJECT NO.	YEAR	SHEET NO.	SHEETS
KANSAS	87 N-0235-01	2006	44	120

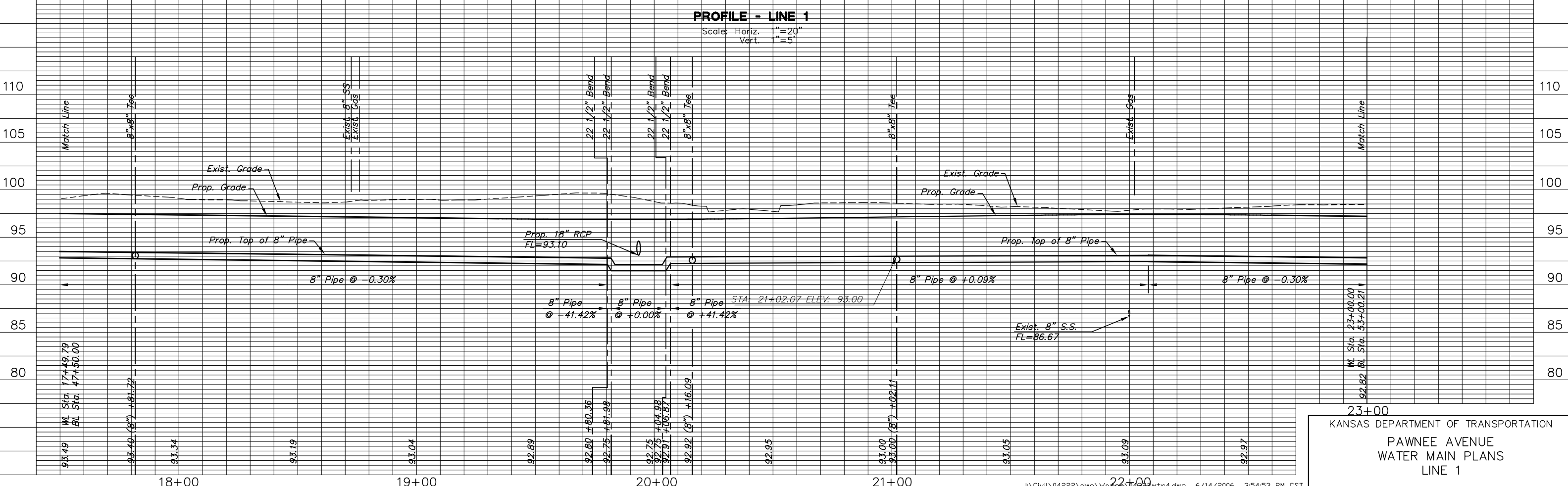
0-Short Services
2-Long Services



PLAN - LINE 1

PROFILE - LINE 1

Scale: Horiz. 1"=20"
Vert. 1"=5'



23+00
KANSAS DEPARTMENT OF TRANSPORTATION
PAWNEE AVENUE
WATER MAIN PLANS
LINE 1