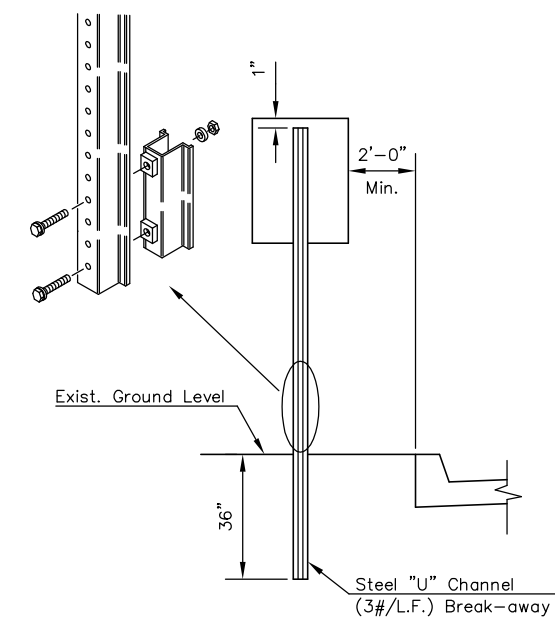
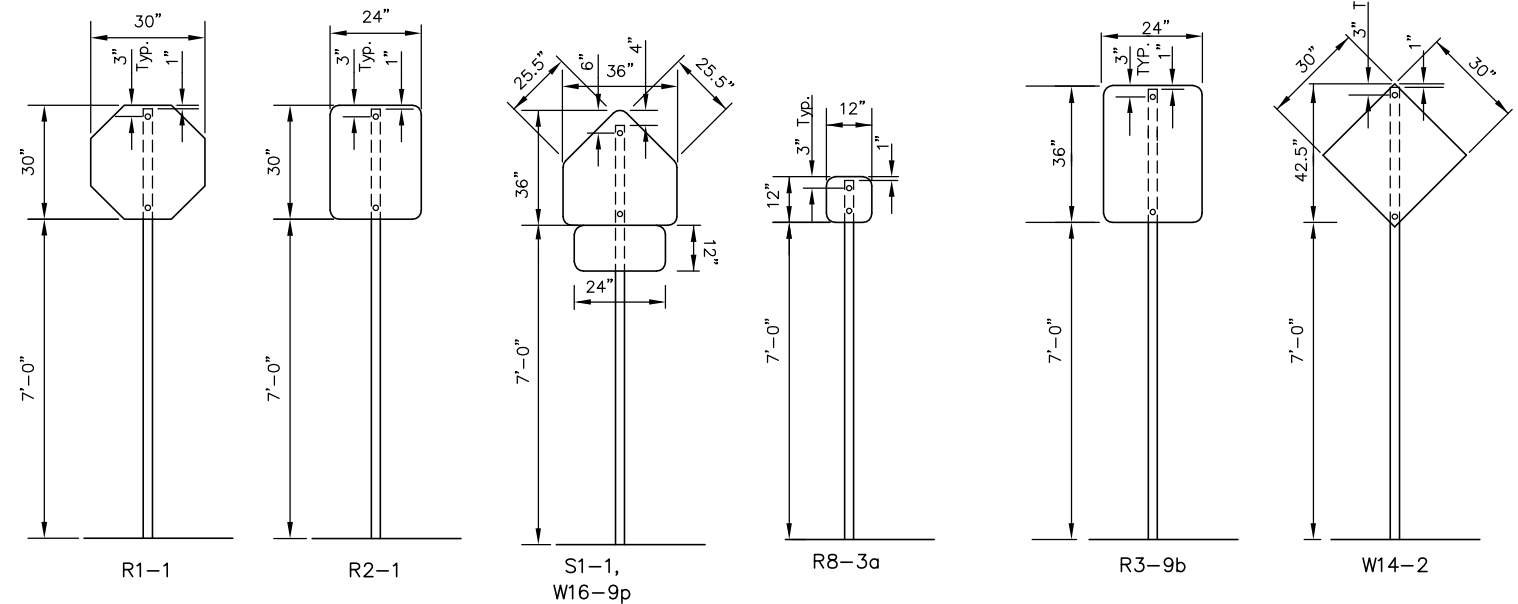


TRAFFIC CONTROL SIGNS & SIGN POST

STATE	PROJECT NO.	YEAR	SHEET NO.	SHEETS
KANSAS	87 N-0235-01	2006	83	120

Station	Location from C	Classification - Each								Sign Post Length	
		R1-1	R2-1	R3-9b	R8-3a	S1-1	W16-9p	W14-2	OM4-3	Breakaway 1-3/4"x1-3/4"	"U"-Channel
<b>Pawnee</b>											
32+11	Lt.	1									10.5'
34+15	Lt.		1								10.5'
38+55	Rt.		1								10.5'
40+05	Lt.	1									10.5'
40+58	Rt.	1									10.5'
43+20	Rt.					1	1				11.0'
43+64	Lt.	1									10.5'
44+48	Rt.	1									10.5'
46+90	Lt.	1									10.5'
48+28	Rt.	1									10.5'
50+16	Lt.	1									10.5'
50+86	Lt.					1	1				11.0'
51+42	Rt.	1									10.5'
53+17	Rt.		1								10.5'
53+40	Lt.	1									10.5'
54+18	Rt.	1									10.5'
56+52	Lt.	1									10.5'
57+21	Rt.	1									10.5'
59+47	Lt.	1									10.5'
60+38	Rt.	1									10.5'
<b>Washington</b>											
6+77	Rt.										9.0'
8+60	Lt.										9.0'
7+04	Lt.		1								10.5'
10+98	Rt.										9.0'
13+05	Rt.		1								10.5'
13+47	Lt.										9.0'
<b>Mosley</b>											
	Rt.						1				11.5'
								1			5.5'
									1		5.5'
										1	5.5'
											5.5'
											5.5'
<b>Total</b>		<b>15</b>	<b>5</b>	<b>4</b>	<b>2</b>	<b>2</b>	<b>1</b>	<b>4</b>			<b>268.0'</b>



SIGN POST LENGTH SUMMARY

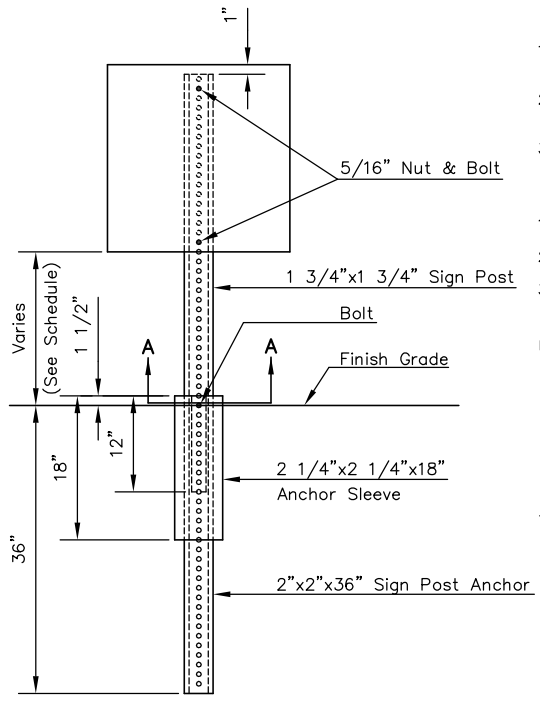
BREAKAWAY SIGN POST:	
1 3/4"x1 3/4"x LENGTH	EACH
10.5'	20
11.0'	2
11.5'	1
9.0'	4
5.5'	4
2-1/4"x2-1/4"x18"	31
2"x2"x36"	31
U-CHANNEL	
LENGTH	EACH
STUBS 3'	
POSTS 8'	
POSTS 9'	
POSTS 9-1/2'	
POSTS 11'	

SIGN MOUNTING DETAILS

RECAPITULATION OF MATERIALS		
ITEMS	TOTAL	UNIT
Sign Face, (High Intensity HA Reflective Sheeting)	124.2	S.F.
Steel "U" Channel Sign Post		L.F.
Breakaway Sign Post, 1-3/4" x 1-3/4"	268.0	L.F.
Breakaway Anchor Sleeve, 2-1/4" x 2-1/4" x 18"	39.0	L.F.
Breakaway Sign Post Anchor, 2" x 2" x 36"	78.0	L.F.

RECAPITULATION OF MATERIALS		
BID ITEMS	TOTAL	UNIT
Signing	LUMP SUM	S.F.

SIGN DESCRIPTION			
CLASSIFICATION	TYPE	SIZE	AREA
R1-1	STOP SIGN	30"x30"	5.18 SQ. FT.
R2-1	SPEED LIMIT	24"x30"	5.00 SQ. FT.
R8-3a	NO PARKING	12"x12"	1.00 SQ. FT.
S1-1	SCHOOL CROSSING AHEAD	36"x36"	6.75 SQ. FT.
W16-9p	NO OUTLET	24"x12"	2.00 SQ. FT.
W14-2	E.O.R. MARKER	30"x30"	6.25 SQ. FT.
OM4-3	E.O.R. MARKER	18"x18"	2.25 SQ. FT.

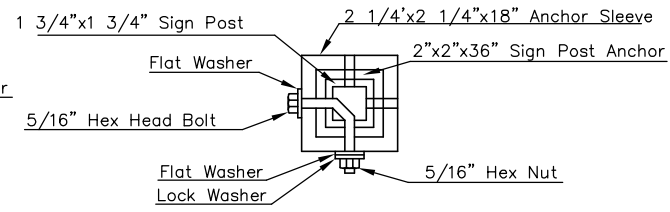


- PAVEMENT INSTALLATION SEQUENCE
- SIGN POST ANCHOR DRIVEN INTO SUBGRADE PRIOR TO THE PLACEMENT OF THE PAVEMENT.
  - ANCHOR SLEEVE DRIVEN INTO SUBGRADE OVER THE SIGN POST ANCHOR PRIOR TO THE PLACEMENT OF THE PAVEMENT.
  - INSERT SIGN POST INTO THE SIGN POST ANCHOR AND BOLT IN PLACE.

- GROUND INSTALLATION SEQUENCE
- SIGN POST ANCHOR DRIVEN INTO THE GROUND.
  - ANCHOR SLEEVE DRIVEN INTO THE GROUND OVER THE SIGN POST ANCHOR.
  - INSERT SIGN POST INTO THE SIGN POST ANCHOR AND BOLT IN PLACE.

NOTE: IN ALL INSTALLATIONS THE FIRST HOLE ABOVE THE FINISHED GRADE LEVEL IN ALL THREE UNITS MUST BE IN LINE FOR INSERTION OF THE BOLT.

ALL BOLTS AND NUTS FOR FASTENING THE SIGNS AND SIGN POST ASSEMBLY SHALL COMPLY WITH SECTION 1614 AND ALL WASHERS SHALL COMPLY WITH SECTION 1614 OF THE STANDARD SPECIFICATION FOR STATE ROAD AND BRIDGE CONSTRUCTION (1990 EDITION) AND SHALL BE SUBSIDIARY ITEM.



BREAK-AWAY SIGN POST DETAIL

NOTE: ALL LETTER, NUMBER, & SYMBOL SIZES, SPACING, AND COLORS AND SHALL CONFORM TO THE CURRENT "MANUAL ON UNIFORM TRAFFIC CONTROL DEVICES."  
ALL SIGN MATERIAL TO BE 0.080" ALUMINUM.  
(7) BUS ROUTE SIGNS AND (2) NO PARKING SIGNS SHALL BE RELOCATED AS SHOWN ON THE SIGNING PLAN. COST OF RELOCATION SHALL BE SUBSIDIARY TO SIGNING.

J:\Civl\04222\dwg\Details\SIGNDTL4.DWG 07/06/2006 03:54:16 PM CST

KANSAS DEPARTMENT OF TRANSPORTATION

STREET SIGN DETAILS

PROJECT NO. 87 N-0235-01 SEDGWICK CO.

M K E C ENGINEERING CONSULTANTS, INC.  
WICHITA, KANSAS

DESIGNED BY: JRA CHECKED BY: JRA  
DRAWN BY: WNJ DATE: JULY 2004 SHEET 83 OF 120