

AS BUILT PLANS

Contractor: CK Contracting
 Inspector: Don Eddingfield, Baughman Co.
 pdf's by: KK, 11/9/09

Release Date: 11/30/2009
 APRos 11/30/2009

8" SANITARY SEWER SERVICE LINE TO SERVE Cox Machine 3rd Addition

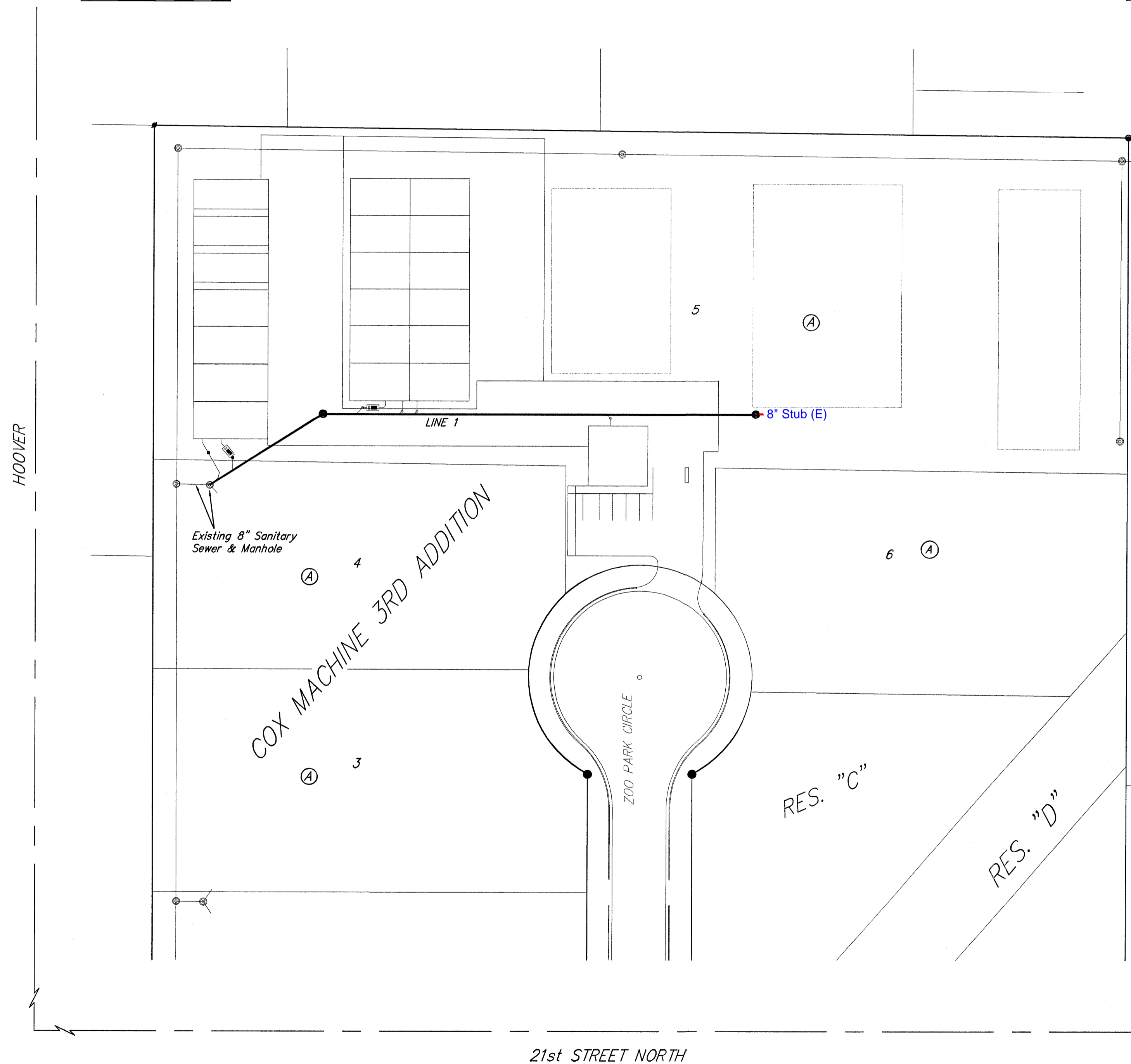
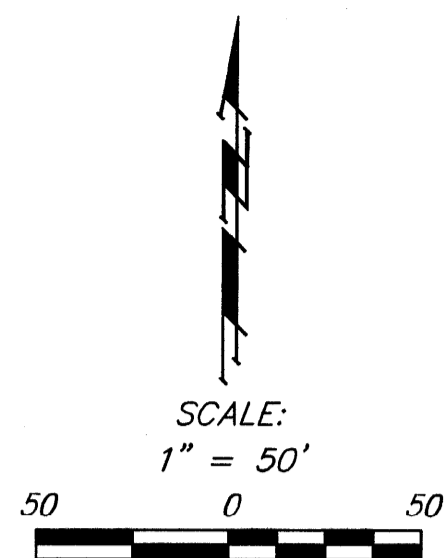
LOT 5, BLOCK A

Private Project Number: 1980 PPS (607861)

CITY OF WICHITA, KANSAS

James Armour, P.E. City Engineer

June 2009



Bench Marks:

Site Bench Mark
 Northeast Property Corner Iron.
 Elev. = 1326.15

Index

Title Sheet	1
Plan/Profile Sheet	2
Copy of Plat	3
Manhole Detail	Available On Request
Ring & Cover Details	Available On Request
BMP Erosion Details	Available On Request

Legal Description

Lot 5, Block A, Cox Machine 3rd Addition,
 Wichita, Sedgwick County, Kansas.

APPROVED AS NOTED
 BY CITY ENGINEER OF WICHITA

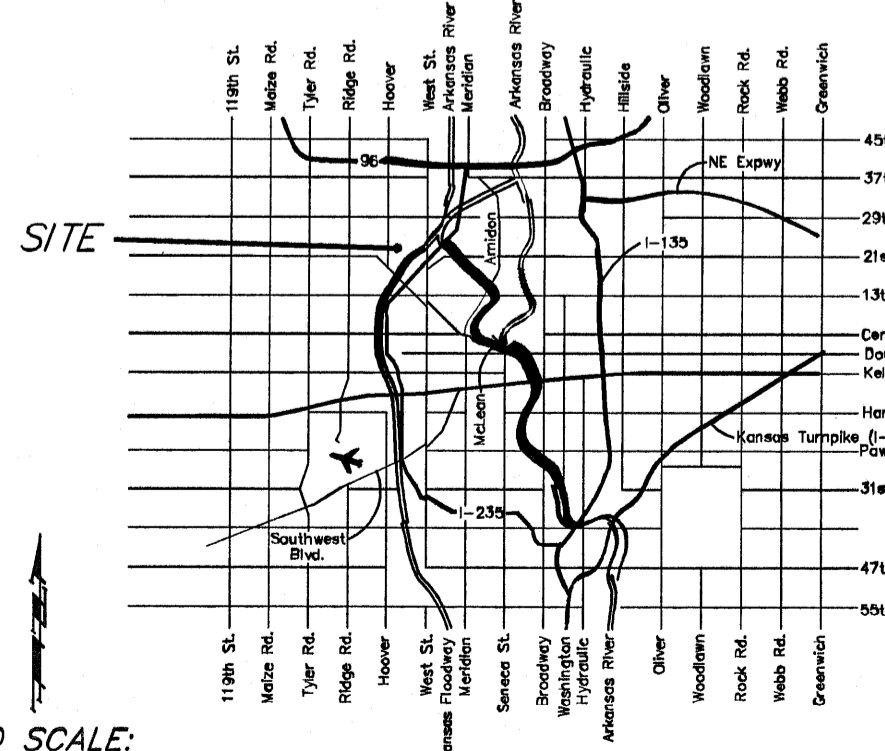
Sanitary Sewers *Shm Miller* 6-30-09

NOTE TO CONTRACTORS

Installation, inspection and testing for this project is to be provided by a Licensed Consulting Engineering Firm under contract with the Owner/Developer. Said inspection to be in accordance with the City of Wichita standard construction engineering practices and certified by a Licensed Professional Engineer. No work shall be performed in dedicated easements or public right-of-way by the Contractor without such inspection nor shall any work be commenced without written authorization by the City Engineer. All Construction and Materials shall comply with the City of Wichita Specifications and Standards (on file and available in the City Engineer's Office).

General Notes

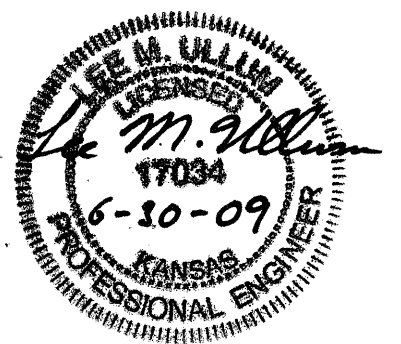
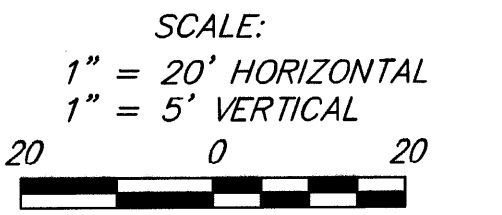
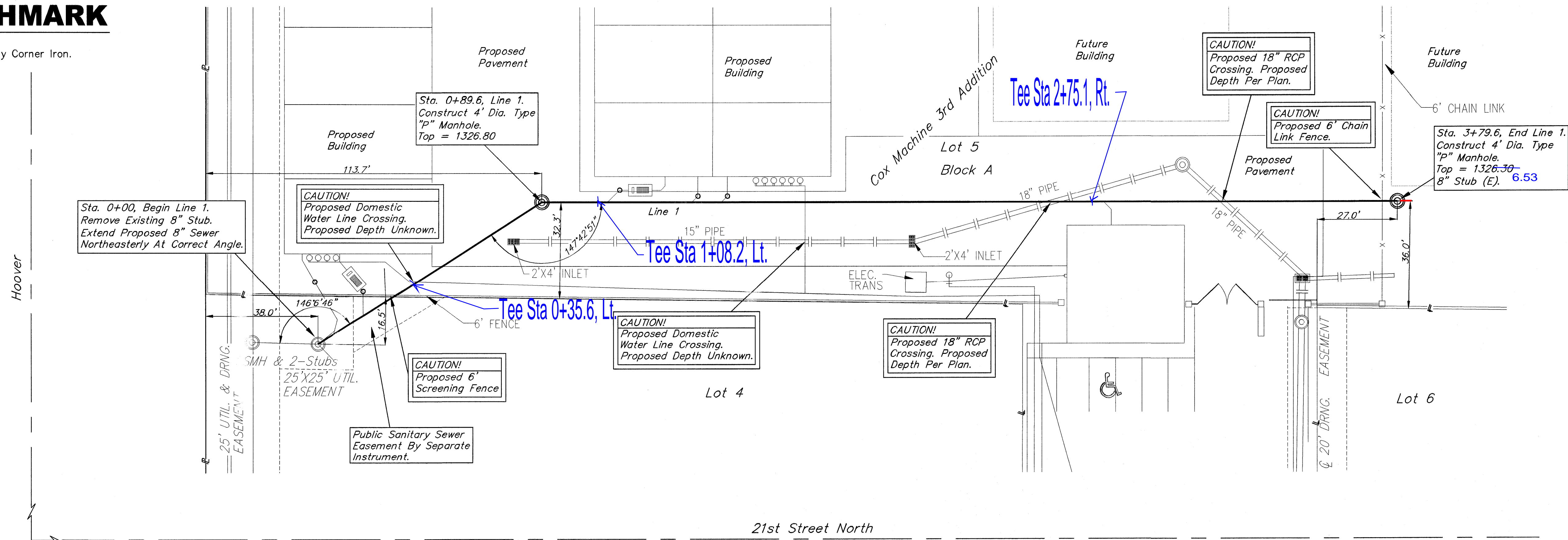
- Contractor will be required to provide notice to utility companies a minimum of forty-eight (48) hours prior to any excavation, as follows:
 Kansas One-Call 687-2470
 Cox Communications 262-4270
 Kansas Gas Service Company 1-888-482-4950
 Westar Energy (Electric) 383-8650
 Aquila Energy (Gas) 1-800-303-0357
 Southwestern Bell Telephone Co. 1-800-286-8313
 City of Wichita Water Dept. (Water) 262-6000
 City of Wichita Sewer Maint. (SS) 262-6000
 City of Wichita Storm Sewer Maint. 268-4090
 City of Wichita Traffic Maint. 268-4034
- All disturbed R/W areas not intended for pavement or sidewalk construction shall be seeded with Kansas Premium Fescue Blend at a rate of 8 lb./1000 Sq. Ft., fertilized with a 16-20-6 ratio at a rate of 4 lb./1000 Sq. Ft., and mulched with Prairie Hay at a rate of 92 lb./1000 Sq. Ft. Mulch shall be "patted" with forks or punched into soil to reduce loss due to wind.
- Utility service lines, poles, valve boxes, meters, et cetera are to be adjusted as necessary by others prior to construction unless the plans specifically call for their adjustment by the Contractor or unless the plans specifically identify a utility to be adjusted by its owner during construction. Existing utilities and their location, as shown on the plans represent the best information obtainable for design and shall be field verified. The contractor will be required to work around existing utilities within the right-of-way which do not conflict with proposed construction.
- All sanitary sewers and appurtenances shall be installed in accordance with the most recent edition of City of Wichita, Kansas Standard Specifications for the Construction of City Projects.
- Contractor shall furnish the inspector with a copy of the manufacturer's certification for any pipe used on this project after completion of pipe installation. The engineer will not certify the project to the city until pipe certification has been received.
- Contractor shall not start work on the project until the project inspector is assigned to the project and is present on the site. Contractor shall not start on the project until all necessary bonds and permits have been obtained. Bonds may include but are not limited to Statutory, Performance & Maintenance for areas in public right-of-way and easement. For projects within the City of Wichita contact Tom Mason (268-4574). Any work done without inspection will be required to be uncovered for inspection.
- Rubble from the removal of miscellaneous structures and excess excavation which is to be wasted shall be disposed of on sites to be provided by the Contractor. These sites shall be approved by the Engineer as to suitability, appearance and site location. Locations that, in the opinion of the Engineer, will leave an unsightly appearance will not be approved. All disposal sites must be approved by the Kansas Department of Health and Environment. Material either stockpiled or disposed of in a flood plain would require a Kansas State Board of Agriculture permit. Any material dumped in waters of the United States or wetlands is subject to U.S. Corps. of Engineers permitting regulations. Any material buried or stockpiled beyond approved construction limits would require additional archaeological investigations unless buried in a previously approved borrow location.
- The Contractor shall be responsible for maintaining continuous flow of sewage through construction. Contractor's proposed method for maintaining sewage flow shall be approved by the Engineer. Cost of maintaining flow of sewage through construction will not be paid for directly and this cost shall be considered as subsidiary to the other pay items of work.
- All proposed sanitary sewer lines & manholes in this project will be privately owned & maintained.



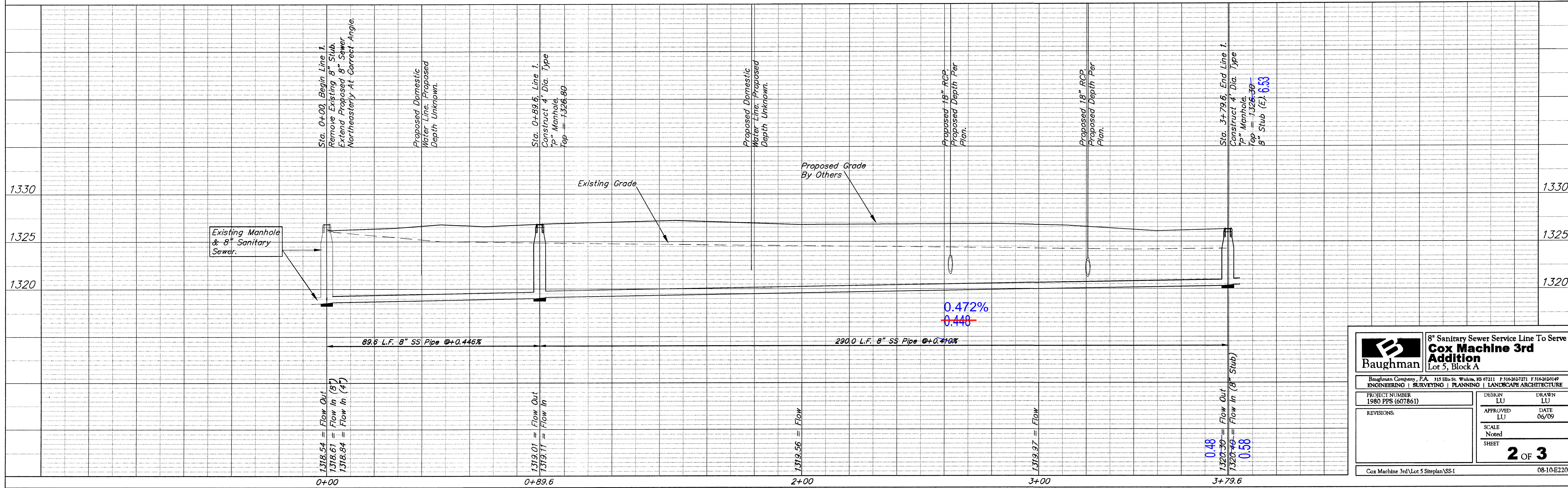
VICINITY MAP

BENCHMARK

Site Benchmark
Northeast Property Corner Iron.
Elev. = 1326.15



- All Proposed Sanitary Sewer Lines & Manholes In This Project Will Be Privately Owned & Maintained.
- Contractor Shall Follow All Applicable Best Management Practices (BMP) For Erosion Control.
- Contractor To Use Extreme Caution When Excavating Near Utility Lines. Contractor To Hand Dig To Expose All Utility Lines Prior To Construction. Verify Depth To Determine Conflict If Any.



Baughman
8" Sanitary Sewer Service Line To Serve
Cox Machine 3rd Addition
Lot 5, Block A

Baughman Company, P.A. 315 Ella St. Wichita, KS 67211 P 316-2627271 F 316-2620149
ENGINEERING | SURVEYING | PLANNING | LANDSCAPE ARCHITECTURE

PROJECT NUMBER: 1980 PPS (607861)
DESIGN: LU
DRAWN: LU
APPROVED: LU
DATE: 06/09
SCALE: Noted
SHEET: 2 OF 3

REVISIONS:

Cox Machine 3rd/Lot 5 Siteplan/SS-1 08-10-E220