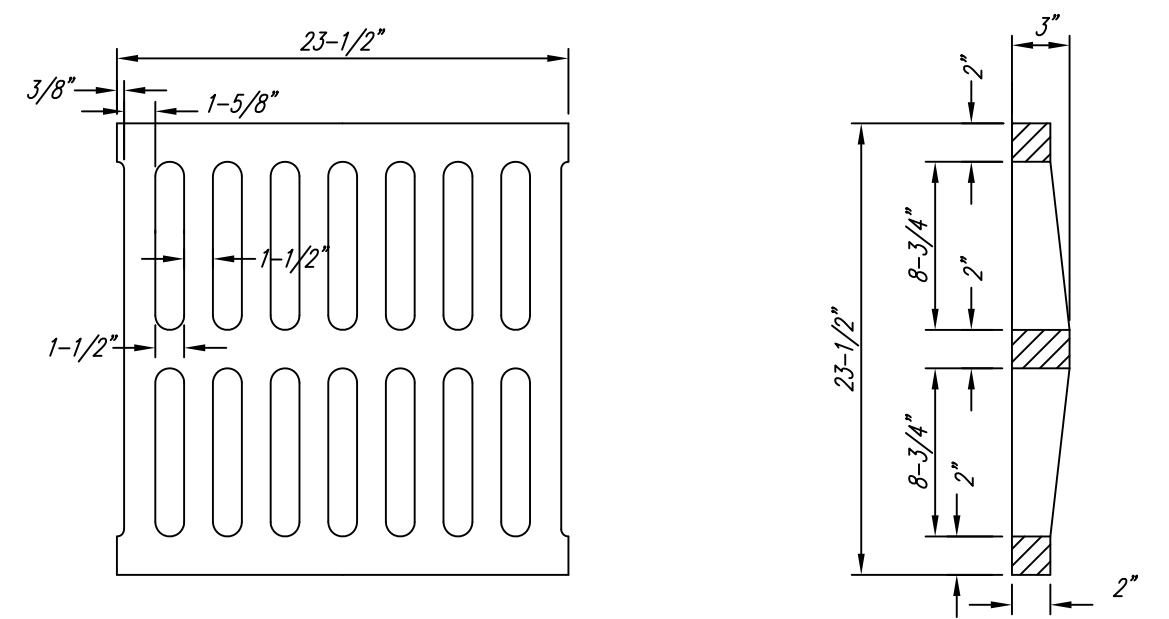
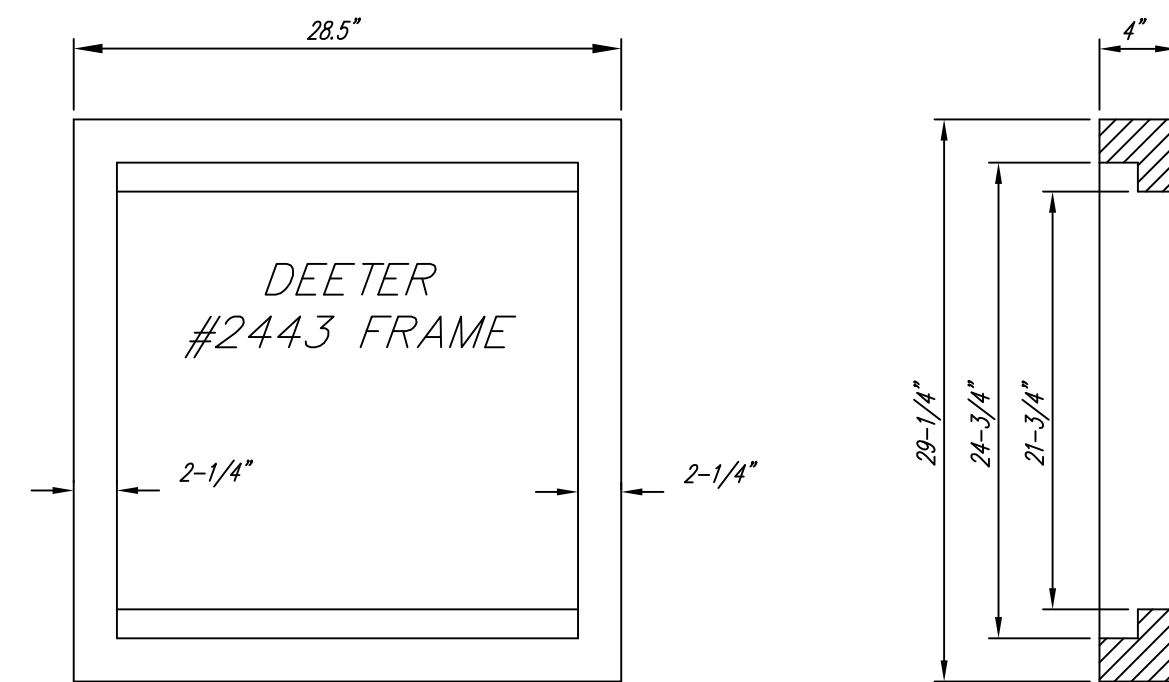


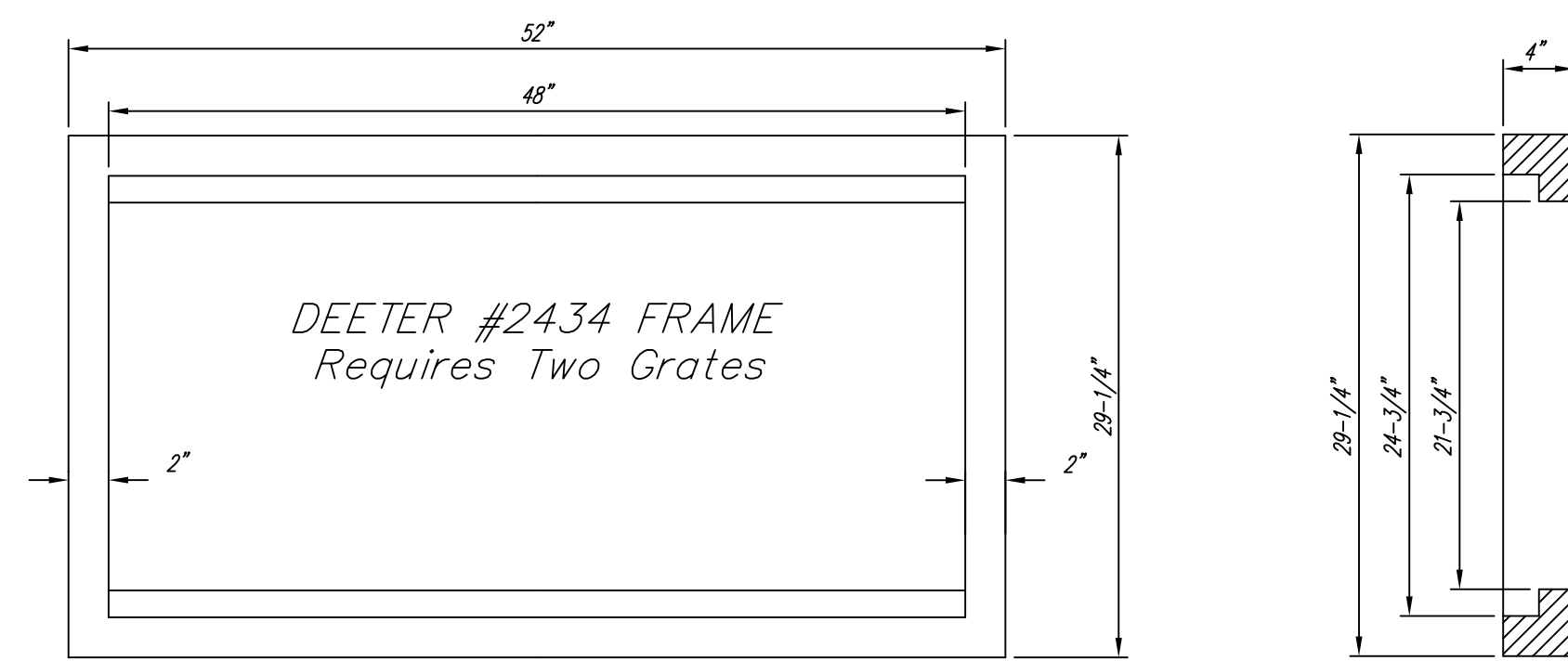
1300 E. Lewis  
Wichita KS 67211  
316.267.8233  
316.267.8566 fax  
krehbielarchitect  
ure.com

BETHEL HOUSE  
RESIDENT ACTIVITY CENTER  
553 S. HOLLAND LANE  
WICHITA, KANSAS



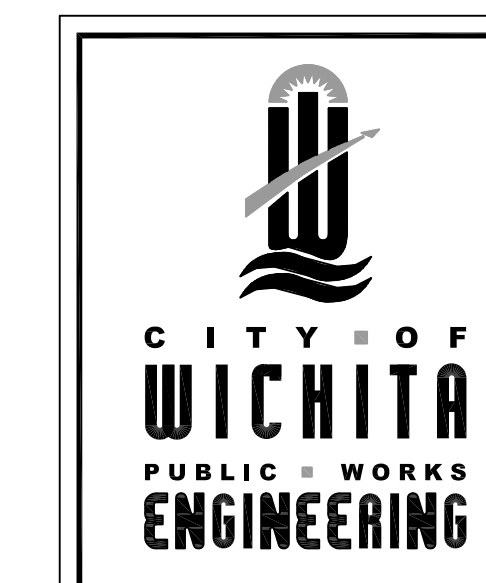
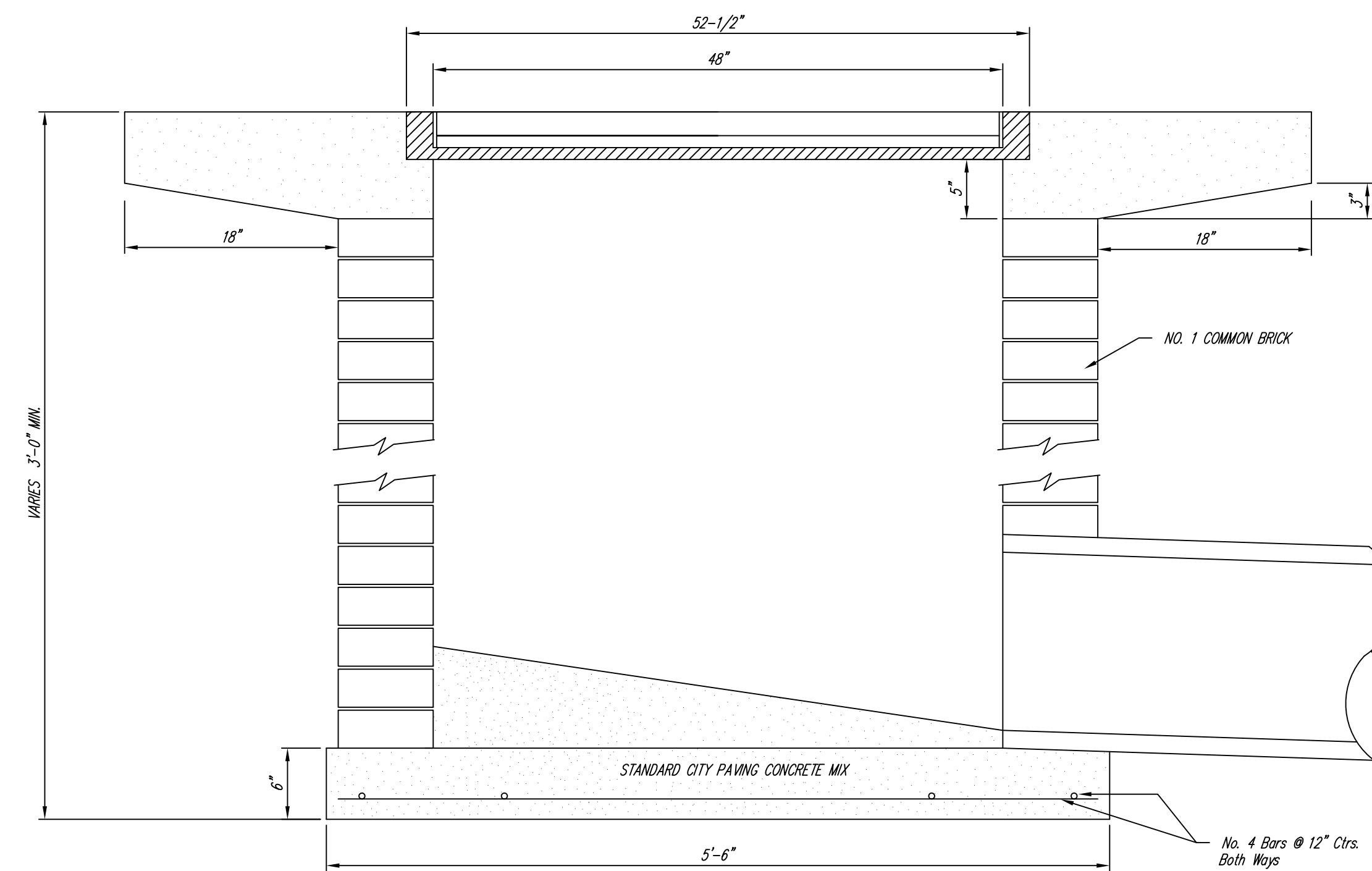
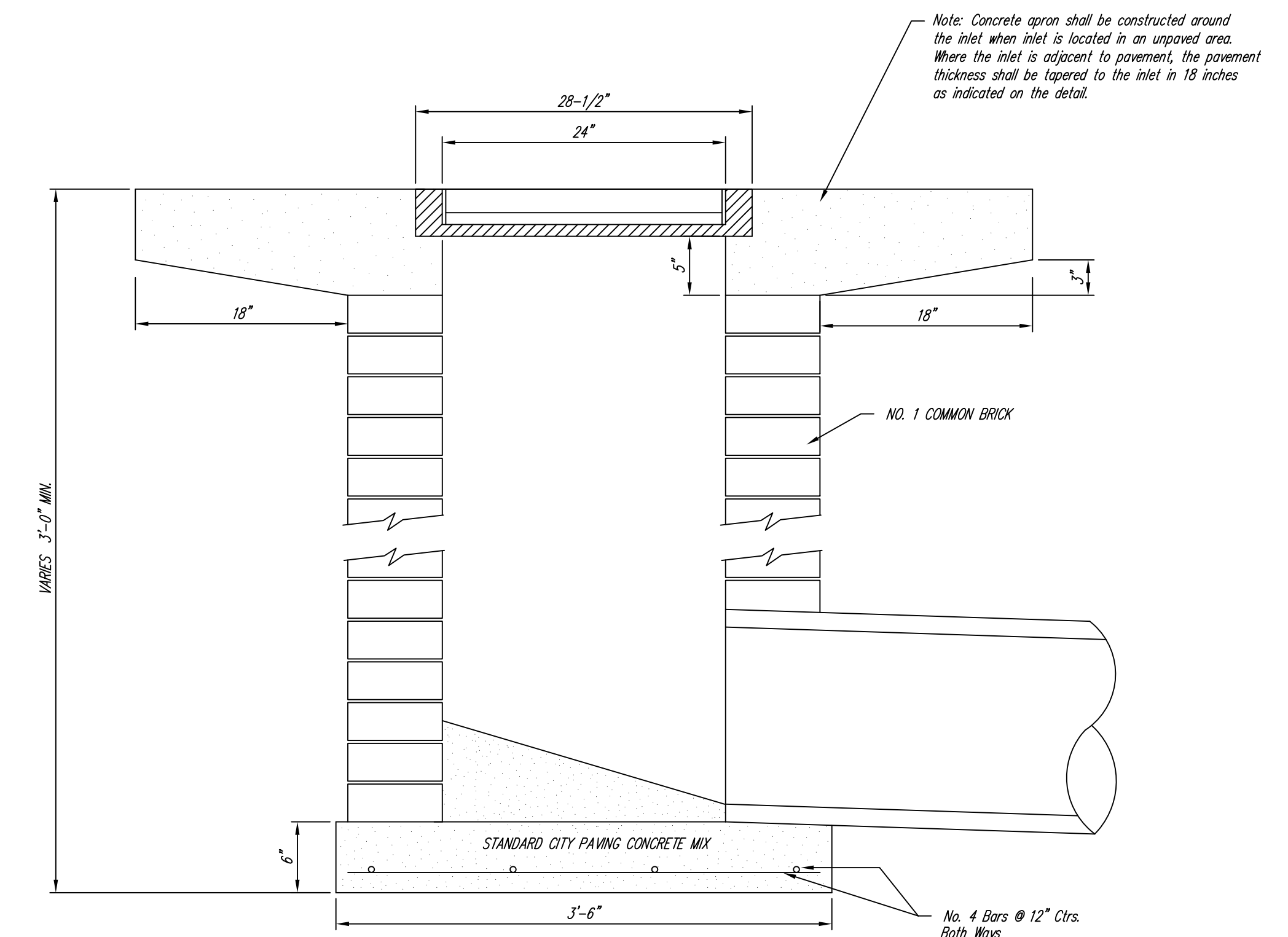
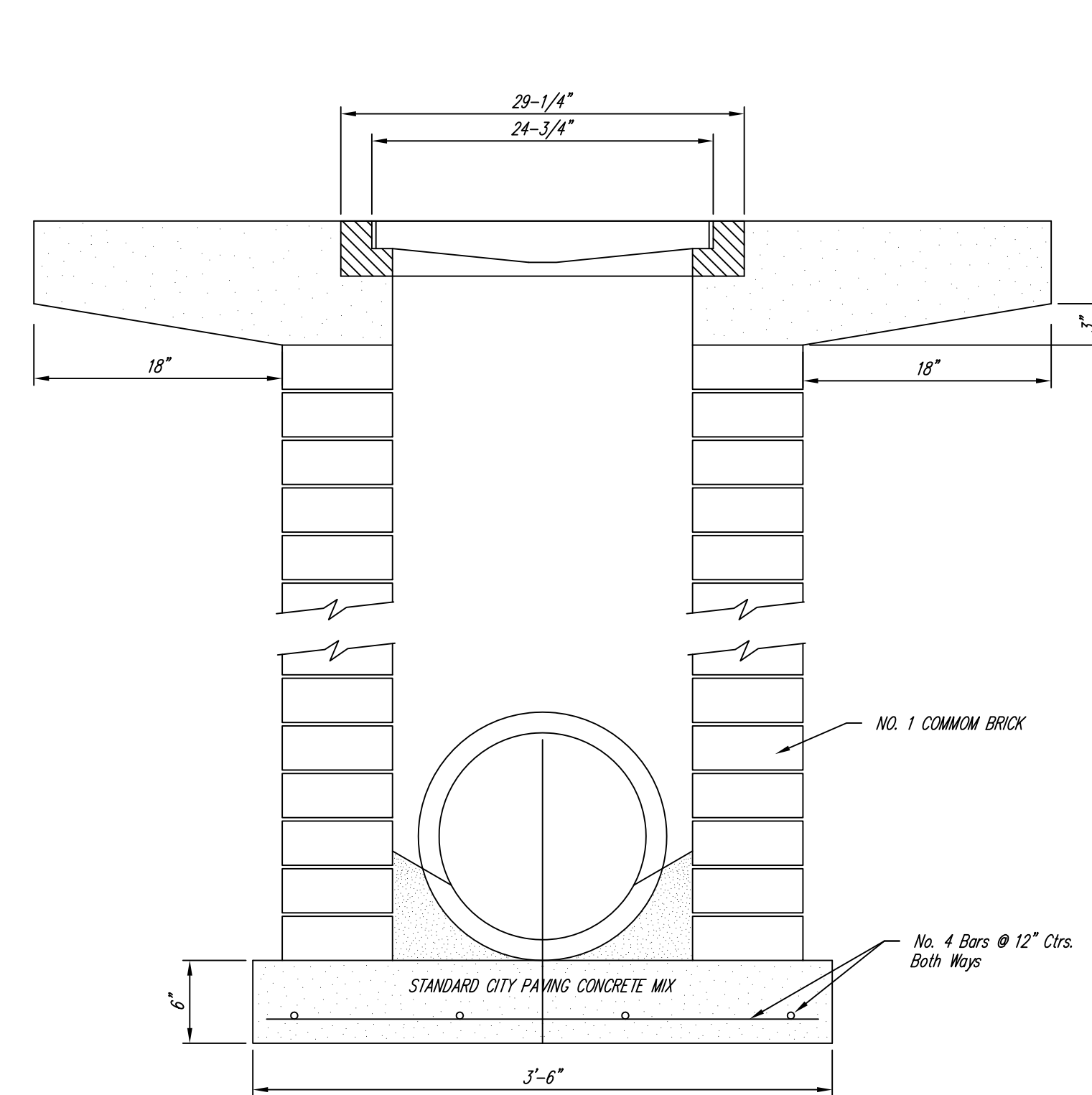
DEETER #2433 GRATE

24" x 24" Frame and Grate Detail



Double 24" x 24" Frame Detail

NOTE: Grates shall be imprinted on the top surface with "CITY OF WICHITA" using letters at least 1" in height. Other marking methods may be approved by the engineer.



<b>DROP INLET</b> 2' X 2'/2' X 4'	
CITY ENGINEER'S OFFICE CITY HALL - SEVENTH FLOOR 455 NORTH MAIN STREET WICHITA, KANSAS 67202-1620 (316) 268-4501 (316) 268-4114 FAX	