

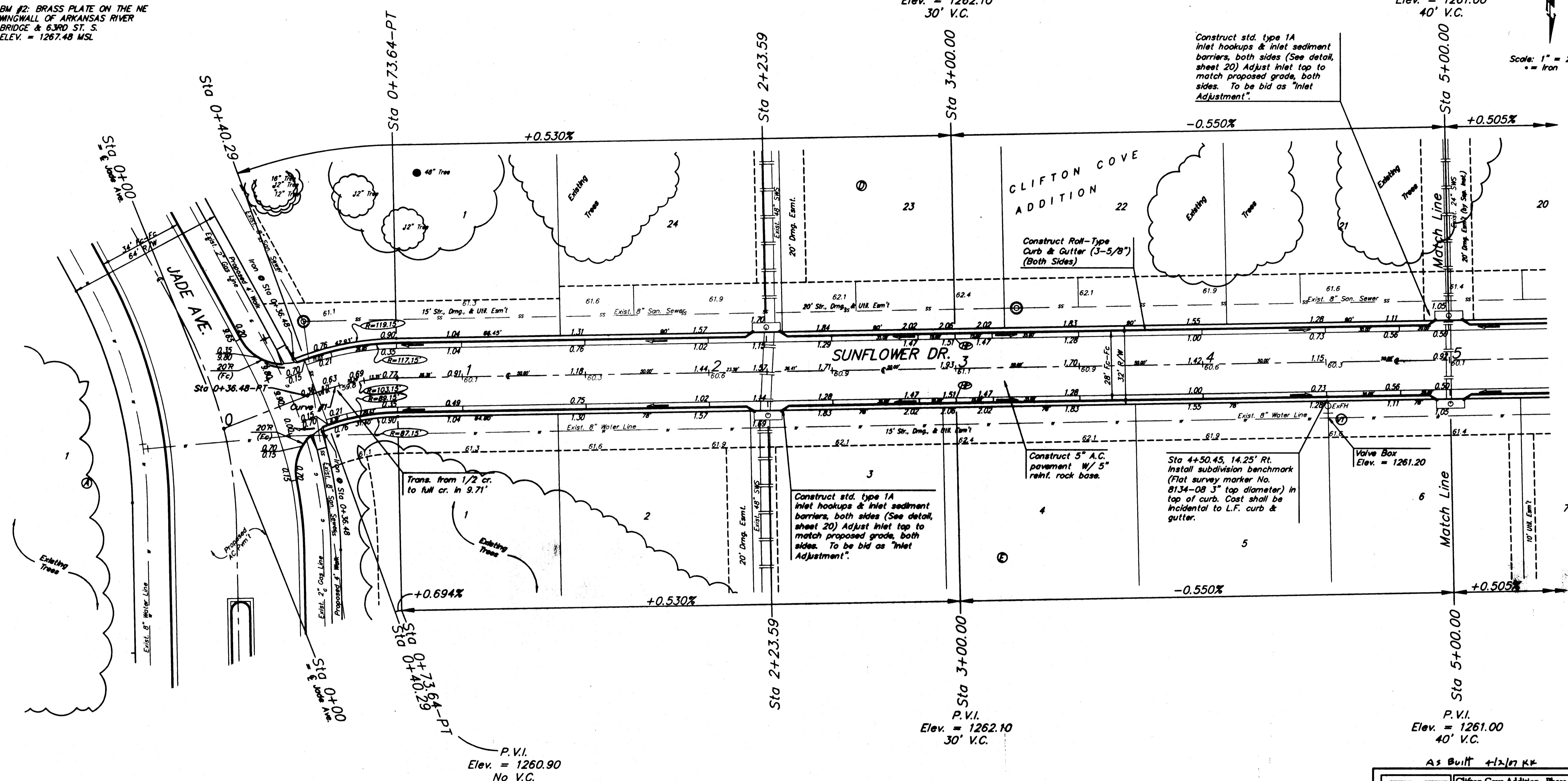
BENCHMARKS:
 BM #1: ARKANSAS RIVER BRIDGE &
 63RD ST. S. CITY OF WICHITA
 BENCHMARK DISC. SW COR. OF
 BRIDGE, TOP OF HUBGUARD. 500'±
 E. OF GROVE.
 ELEV. = 1269.95 MSL

BM #2: BRASS PLATE ON THE NE
 WINGWALL OF ARKANSAS RIVER
 BRIDGE & 63RD ST. S.
 ELEV. = 1267.48 MSL

P.V.I.
 Elev. = 1262.10
 30' V.C.

P.V.I.
 Elev. = 1261.00
 40' V.C.

Scale: 1" = 20'
 • = Iron



Curve #1
 Curve Data Based on Centerline
 Rad. = 103.15' Delta = 20° 38' 35" Tangent = 18.79'
 Arc = 37.16' L.C. = 36.96' Del./Fl. = 16.66555 Min.

Station	Arc	FACE CHORD LENGTHS		Defl.	T. Defl.
		B' LI.	B' RI.		
0+36.48	-	-	-	0°00'00"	0°00'00"
0+40.29	3.81'	4.82'	3.00'	1°03'30"	1°03'30"
0+50.00	9.71'	11.78'	7.84'	2°41'59"	3°48'19"
0+73.64	23.64'	28.82'	18.36'	6°33'59"	10°19'18"

P.V.I.
 Elev. = 1260.90
 No V.C.

P.V.I.
 Elev. = 1262.10
 30' V.C.

P.V.I.
 Elev. = 1261.00
 40' V.C.

As Built +12.07 K+

WATER VALVE LOCATION TABLE

VALVE NUMBER	BASELINE STATION	OFFSET DISTANCE	OFFSET DIRECTION
V1	4+50.45	21'	Rt.

Paving contractor will be responsible to operate all water valves on the project, in the presence of the inspector, to ensure accessibility to the valves, and that all valves are left in the "ON" position when the project is completed.

Existing Trees Shall be removed ONLY with approval of the Engineer. Trees Not in Direct Conflict With Proposed New Construction Shall Remain And Be Protected From Damage. Cost to be Included in Bid Item "Site Clearing & Restoration"

Roll type curb & gutter to be constructed on the pavement on this sheet. Top of curb elevation are given for full height curb.

Clifton Cove Addition - Phase 1
SUNFLOWER DR.
 STA 0+00 TO STA 5+00.00

Baughman
 Baughman Company, P.A. 215 5th St. Wichita, KS 67211 P 316-262-7271 F 316-262-6149
 ENGINEERING | SURVEYING | PLANNING | LANDSCAPE ARCHITECTURE

PROJECT NUMBER: 47124127
 DRAWN BY: MWS/JAK
 CHECKED BY: TMS
 DATE: 5/17/06
 SCALE: Noted
 SHEET: 7 OF 31

Clifton Cove Add/Phase 1 V1r1 05-08-E320