

BENCHMARKS:
 BM #1: ARKANSAS RIVER BRIDGE &
 63RD ST. S. CITY OF WICHITA
 BENCHMARK DISC. SW COR. OF
 BRIDGE, TOP OF HUBGUARD. 500'±
 E. OF GROVE.
 ELEV. = 1269.95 MSL

BM #2: BRASS PLATE ON THE NE
 WINGWALL OF ARKANSAS RIVER
 BRIDGE & 63RD ST. S.
 ELEV. = 1267.48 MSL

P.V.I.
 Elev. = 1261.31
 No V.C.

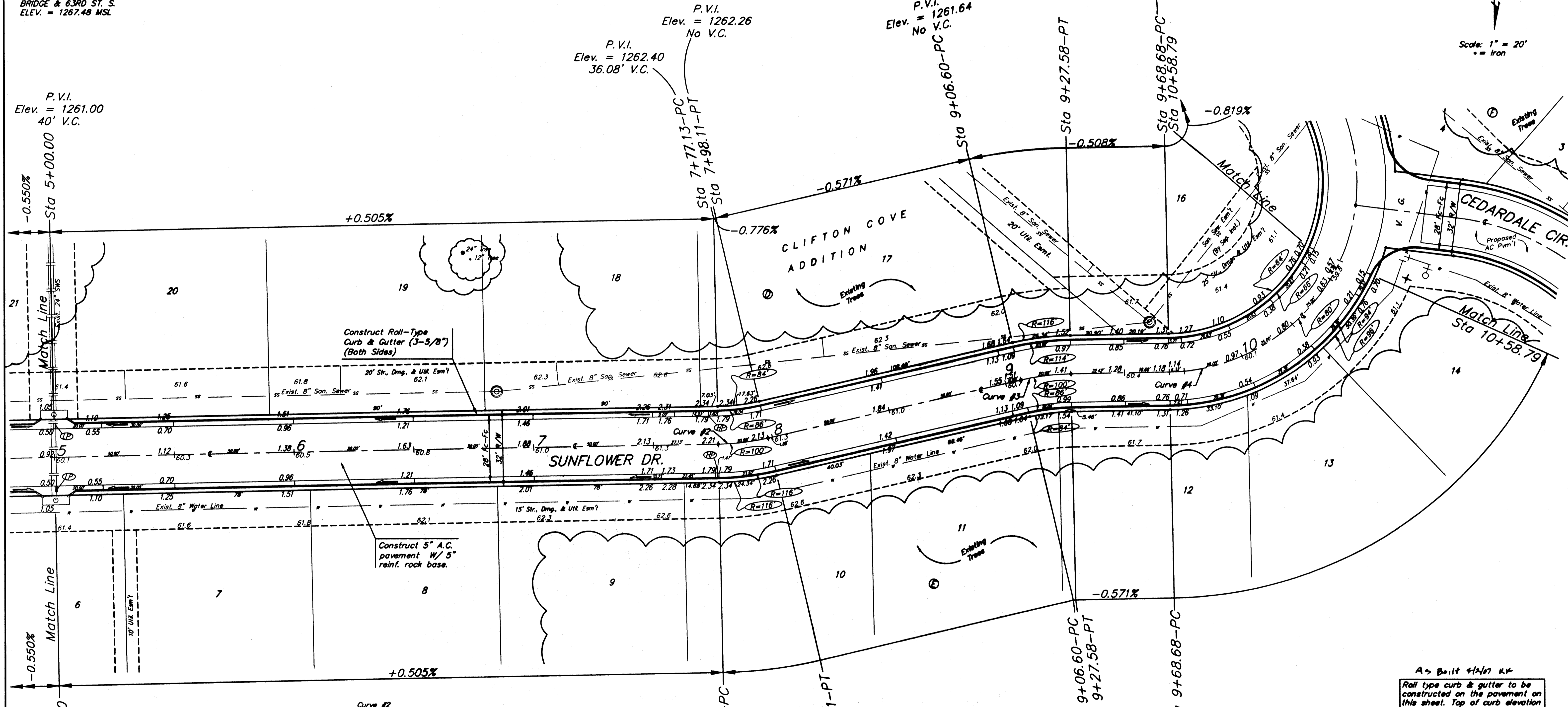
P.V.I.
 Elev. = 1261.64
 No V.C.

P.V.I.
 Elev. = 1262.26
 No V.C.

P.V.I.
 Elev. = 1262.40
 36.08' V.C.

P.V.I.
 Elev. = 1261.00
 40' V.C.

Scale: 1" = 20'
 Iron



Construct Roll-Type
 Curb & Gutter (3-5/8")
 (Both Sides)

Construct 5" A.C.
 pavement w/ 5"
 reinf. rock base.

A > Built 4/16/74
 Roll type curb & gutter to be
 constructed on the pavement on
 this sheet. Top of curb elevation
 are given for full height curb.

Curve #2
 Curve Data Based on Centerline
 Rad. = 100' Delta = 120' 22" Tangent = 10.53'
 Arc = 20.98' L.C. = 20.95' Del/Ft. = 17.19177 Min.

Station	Arc	FACE CHORD LENGTHS		Defl.	T. Defl.
		B' Lt.	B' Rt.		
7+77.13	-	-	-	0'00"00"	0'00"00"
7+98.11	20.98'	16.34'	25.35'	6'00"41"	6'00"41"

Curve #3
 Curve Data Based on Centerline
 Rad. = 100' Delta = 120' 22" Tangent = 10.53'
 Arc = 20.98' L.C. = 20.95' Del/Ft. = 17.19177 Min.

Station	Arc	FACE CHORD LENGTHS		Defl.	T. Defl.
		B' Lt.	B' Rt.		
9+06.60	-	-	-	0'00"00"	0'00"00"
9+27.58	18.40'	22.42'	14.33'	5'16"20"	5'16"20"
9+27.58	2.58'	3.15'	2.01'	0'44"21"	6'00"41"

Existing Trees Shall be removed ONLY with
 approval of the Engineer. Trees Not in
 Direct Conflict With Proposed New
 Construction Shall Remain And Be Protected
 From Damage. Cost to be included in Bid
 Item "Site Clearing & Restoration"

Clifton Cove Addition - Phase 1
SUNFLOWER DR.
 STA 5+00.00 TO STA 10+58.79

Baughman
 Engineering Company, P.A. 315 S.W. 10th, Ft. Lauderdale, FL 33309
 ENGINEERING | SURVEYING | PLANNING | LANDSCAPE ARCHITECTURE

PROJECT NUMBER: 472-94227
 DESIGNER: MWS/JAK
 DRAWN: TMS
 APPROVED: [Signature]
 DATE: 5/17/06

SCALE: Noted
 SHEET: **8 OF 31**

Clifton Cove Add/Phase 1/Sheet 05-08-E320