

GENERAL NOTES

Utility service lines, poles, valve boxes, meters, and all others are to be located as necessary by others prior to construction unless the plans specifically call for their adjustment by the Contractor or unless the plans specifically identify a utility to be adjusted by its owner during construction. Existing utilities and their location, as shown on the plans, represent the best information obtainable for design. The Contractor will be required to work around existing utilities within the right-of-way which do not conflict with proposed construction.

Rubble from the removal of miscellaneous structures and excess excavation which is to be wasted shall be disposed of on sites to be provided by the Contractor. These sites shall be approved by the Engineer as to suitability, appearance and site location. Locations that, in the opinion of the Engineer, will leave an unsightly appearance will not be approved.

All disposal sites must be approved by the Kansas Department of Health and Environment. Material either stockpiled or disposed of in a flood plain would require a Kansas State Board of Agriculture permit. Any material dumped in waters of the United States or wetlands is subject to U.S. Corps permitting regulations. Any material buried or stockpiled beyond approved of Engineers construction limits would require additional archeological investigations unless buried in a previously approved borrow location.

Contractor shall seed, fertilize, and mulch all disturbed areas on site upon completion of the project. Seeding, fertilizing, and mulching shall be in conformance with the City of Wichita Standard Specifications.

SCALE: 1"=40'



BENCHMARK:
 City of Wichita Std. Disc. @ N.W. Cor. traffic signal light base at S.E. Cor. of intersection of Hillside Ave. and 37th St. No., 40.1 feet South & 60.5 feet E. of intersection of centerlines of both.
 Elevation: 1352.75 N.G.V.D.



**K-96 PARKING LOT
 LAYOUT AND GRADING PLAN**

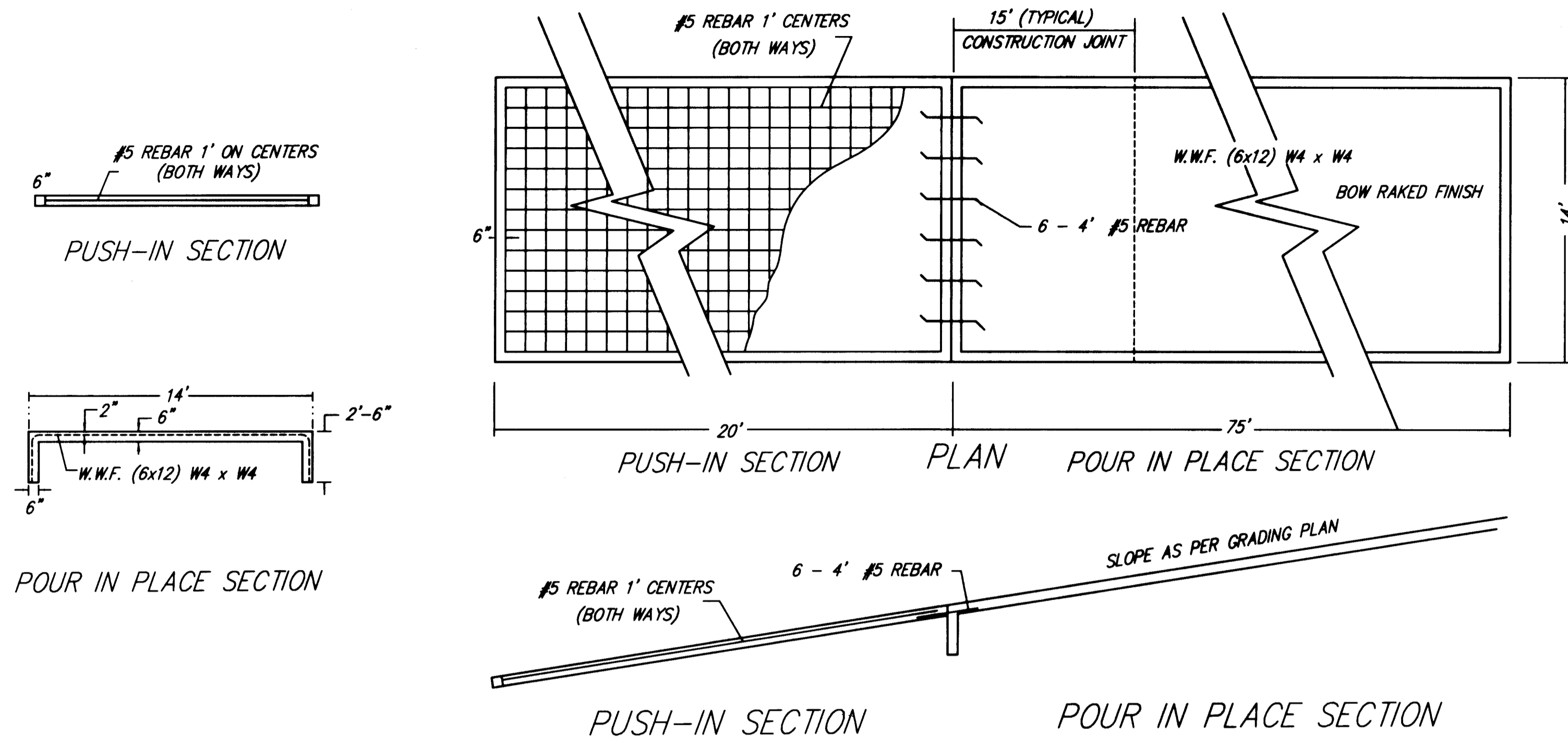
SRB 824 NORTH MAIN 316-264-8008
 WICHITA, KANSAS 67203 FAX 264-4821
 http://www.srb.com E-mail: srbsrb@comcast.net

SAVOY, RUGGLES & BOHM, P.A.
 ENGINEERING & SURVEYING

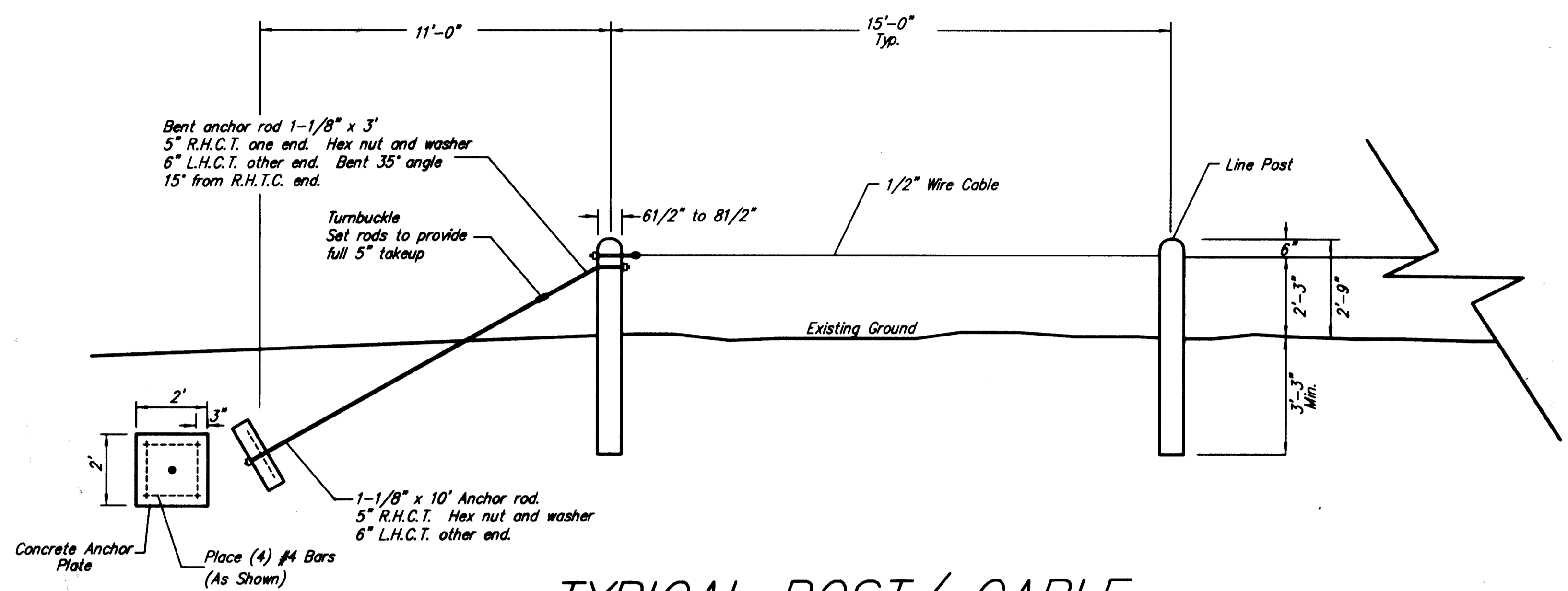
PROJECT NUMBER
 472-82972

DESIGN	RU-CB	DRAWN	RJ	UTILITY	REVIEW	DATE	08-01-2000	REVISED
--------	-------	-------	----	---------	--------	------	------------	---------

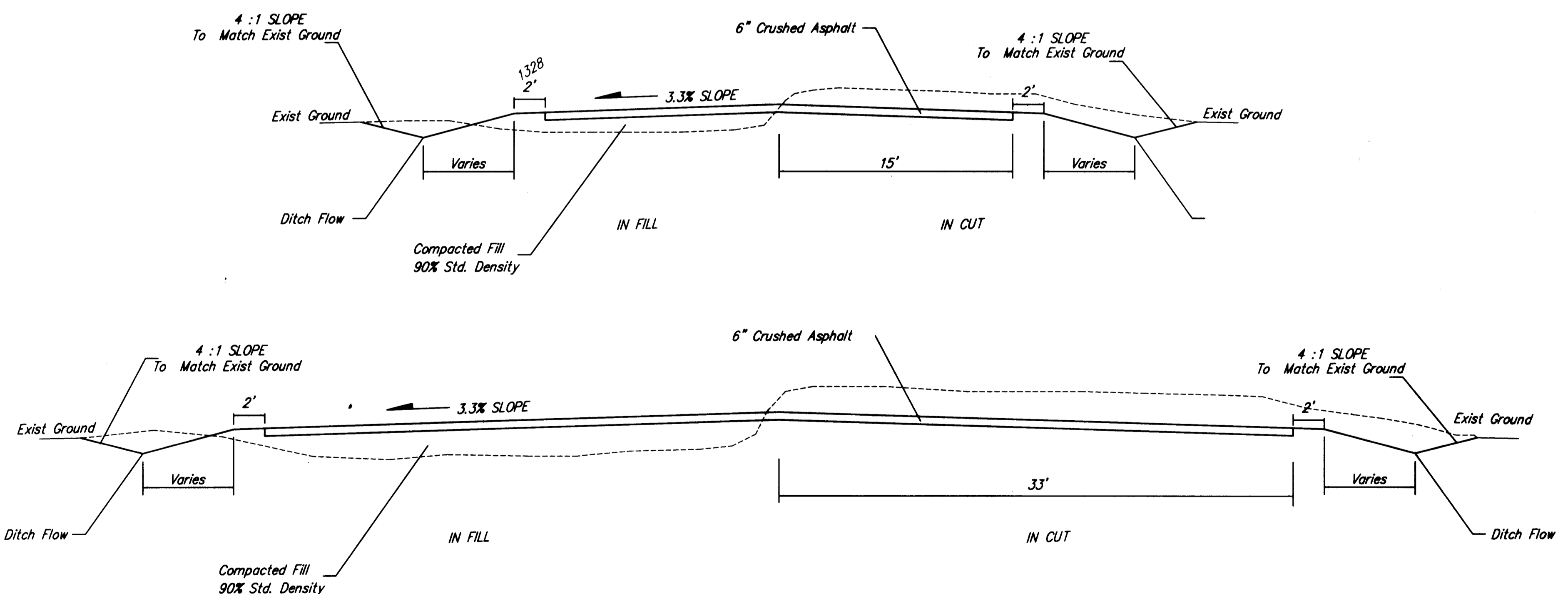
15557
 SHEET 1
 OF 3



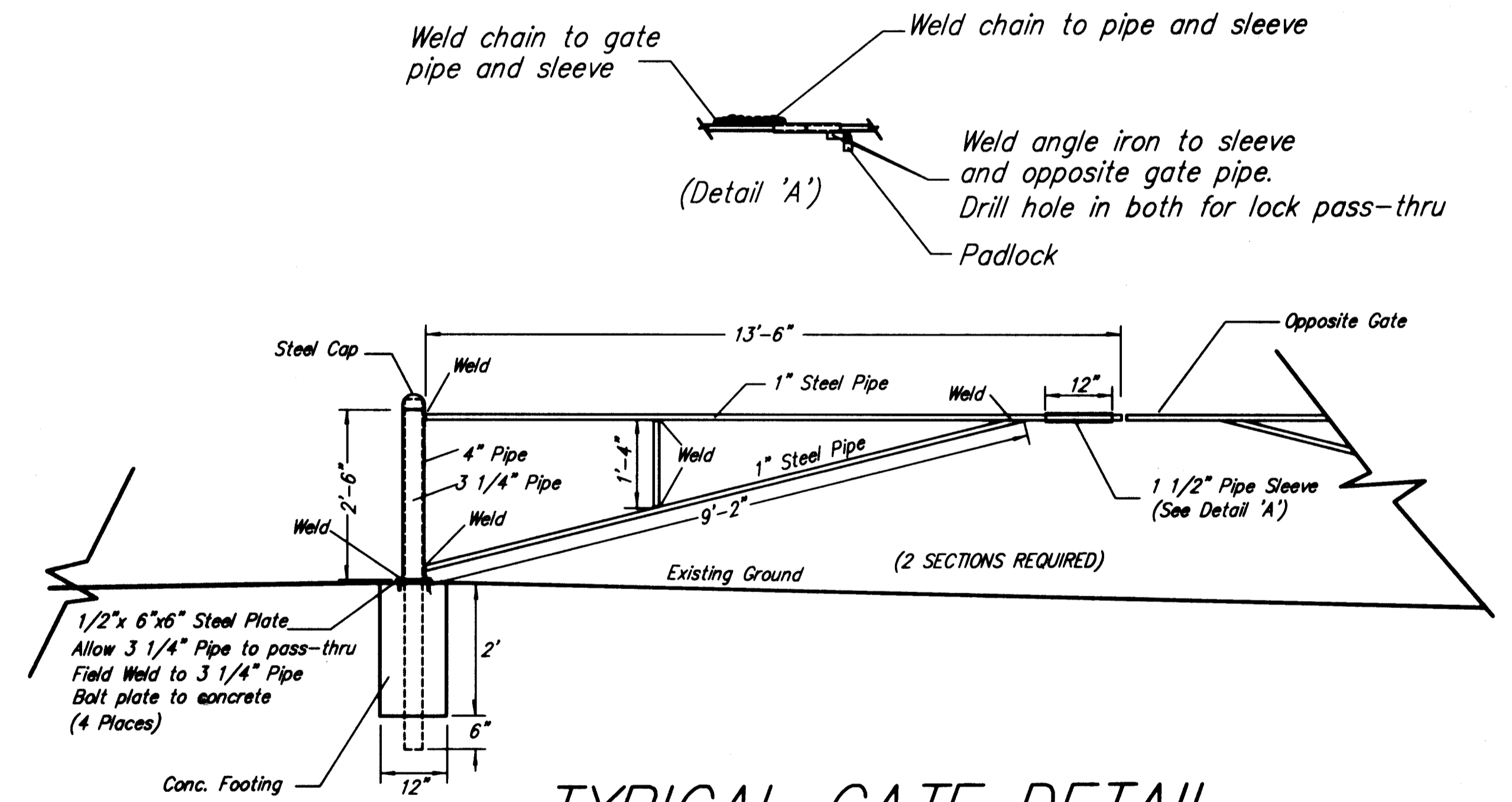
BOAT RAMP DETAIL
NO SCALE



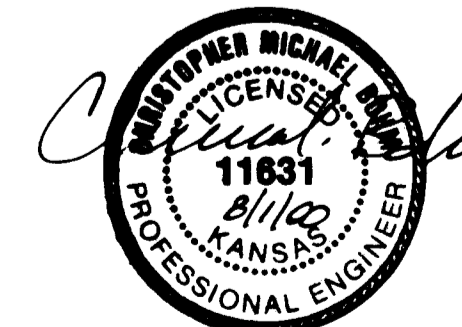
TYPICAL POST/CABLE FENCE DETAIL
NO SCALE



TYPICAL SURFACING SECTIONS
NO SCALE



TYPICAL GATE DETAIL
NO SCALE



K-96 PARKING LOT DETAIL SHEET			
SRB		924 NORTH MAIN WICHITA, KANSAS 67203 http://www.srb1.com	316-264-8008 FAX 264-4621 E-mail: srb@srb1.com
SAVOY, RUGGLES & BOHM, P. A. ENGINEERING & SURVEYING			
PROJECT NUMBER 472-82972			
DESIGN RJ-CB	DRAWN RJ	UTILITY	REVIEW DATE 08-01-2000
DATE 08-01-2000			REVISION J

