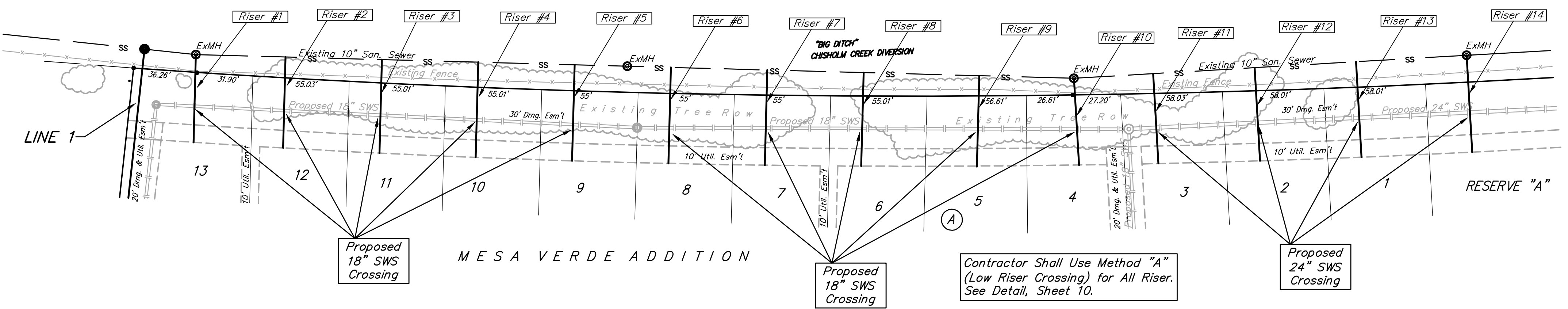
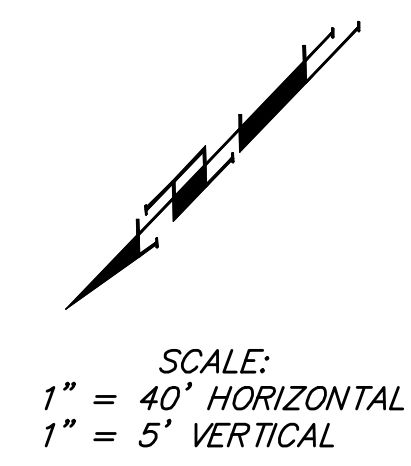


BENCHMARK:
 BM # 1 - City of Wichita Disc in the Northwest Corner of 37th Street North and Womer Elev. = 1324.06 MSL
 BM # 2 - "C" Cut on the Top of Curb in the NE Corner of the Parking Lot for The Word of Life Church at 37th Street North & Meridian. Elev. = 1323.11 MSL
 BM # 3 - RR Spike in the East Face of Light Pole at the Southwest Corner of 34th Street North & Meridian. Elev. = 1320.32 MSL

Remove & Replace Existing Fence Only as Necessary for Construction. Cost to be Included in Bid Item "Site Clearing & Restoration"

Trim or Remove Trees Only as Necessary for Construction and with Approval of the Engineer. Cost to be Included in Bid Item "Site Clearing & Restoration"



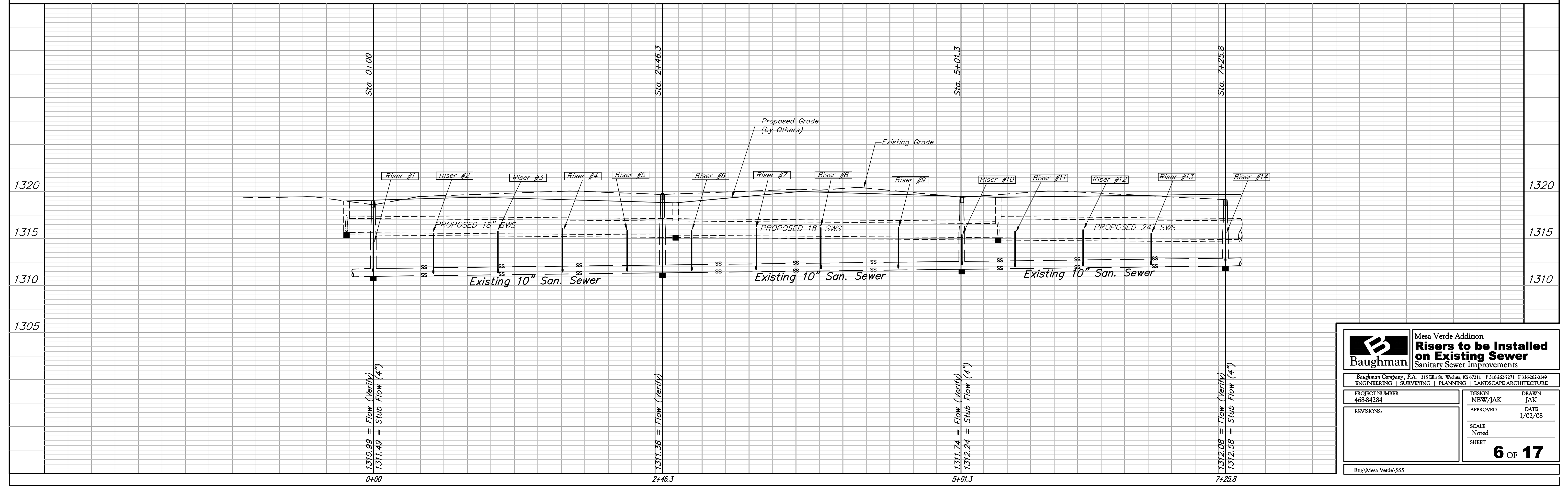
SEWER SERVICE TABLE

DISTANCE FROM		NUMBER	TYPE	LOCATION				FOR INFORMATION ONLY	
UPSTREAM MH	DOWNSTREAM MH			LOT NO.	BLOCK NO.	LINE NO.	STATION/DIRECTION	APPROXIMATE LENGTH 4" PIPE	
246'	0'	1	4" Stub w/ Riser	13	A	N/A	0+00/Rt.	3'	50'
195'	51'	2	10" X 4" Tee	12	A	N/A	0+51/Rt.	4'	52'
140'	106'	3	10" X 4" Tee	11	A	N/A	1+06/Rt.	4.5'	53'
85'	161'	4	10" X 4" Tee	10	A	N/A	1+61/Rt.	4.5'	54'
30'	216'	5	10" X 4" Tee	9	A	N/A	2+16/Rt.	4.5'	55'
230'	25'	6	10" X 4" Tee	8	A	N/A	2+71/Rt.	4'	55'
175'	80'	7	10" X 4" Tee	7	A	N/A	3+26/Rt.	4.5'	54'
120'	135'	8	10" X 4" Tee	6	A	N/A	3+81/Rt.	4.5'	53'

SEWER SERVICE TABLE

NUMBER	TYPE	LOCATION				FOR INFORMATION ONLY		DISTANCE FROM	
		LOT NO.	BLOCK NO.	LINE NO.	STATION/DIRECTION	APPROXIMATE LENGTH 4" PIPE		UPSTREAM MH	DOWNSTREAM MH
9	10" X 4" Tee	5	A	N/A	4+47/Rt.	4.5'	52'	54'	201'
10	4" Stub w/ Riser	4	A	N/A	5+01.3/Rt.	3'	50'	224'	0'
11	10" X 4" Tee	3	A	N/A	5+47/Rt.	4'	51'	179'	46'
12	10" X 4" Tee	2	A	N/A	6+04/Rt.	4'	53'	122'	103'
13	10" X 4" Tee	1	A	N/A	6+62/Rt.	3.5'	55'	64'	161'
14	4" Stub w/ Riser	RES. "A"	N/A	N/A	7+25.8/Rt.	3'	55'	0'	225'

NOTE: Vertical Riser Pipe shall be extended to 2' minimum above ground water elevation and 4' maximum below proposed ground elevation.



Baughman Mesa Verde Addition
Risers to be Installed on Existing Sewer
 Sanitary Sewer Improvements

Baughman Company, P.A. 315 Ellis St. Wichita, KS 67211 P 316-262-7271 F 316-262-0149
 ENGINEERING | SURVEYING | PLANNING | LANDSCAPE ARCHITECTURE

PROJECT NUMBER: 468-84284
 DESIGN: NBW/JAK
 DRAWN: JAK
 APPROVED: DATE: 1/02/08

REVISIONS:

SCALE: Noted
 SHEET: **6 OF 17**

Eng: Mesa Verde\SS5