

PAVING AND INCIDENTAL DRAINAGE PLANS

TO SERVE

BOTANICA - THE WICHITA GARDENS

PROJECT NO. 472-84758

THE CITY OF WICHITA, KANSAS
JAMES L. ARMOUR, P.E. - CITY ENGINEER

OCA NO. 785161

GENERAL NOTES

- UNLESS SHOWN OR STATED OTHERWISE ON THESE DRAWINGS, MATERIALS AND CONSTRUCTION SHALL BE IN ACCORDANCE WITH CITY OF WICHITA CONCRETE PAVEMENT AND ASPHALTIC CONCRETE PAVEMENT SPECIFICATIONS.
- CONTRACTOR WILL BE REQUIRED TO PROVIDE A MINIMUM ADVANCE NOTICE OF SEVENTY-TWO (72) HOURS TO UTILITY COMPANIES PRIOR TO STARTING ANY EXCAVATION AS FOLLOWS:

KANSAS ONE-CALL 1-800-344-7233
OR LOCAL (WICHITA) 687-2470

THE CONTRACTOR MUST NOTIFY THE FOLLOWING IN CASE OF EMERGENCY:

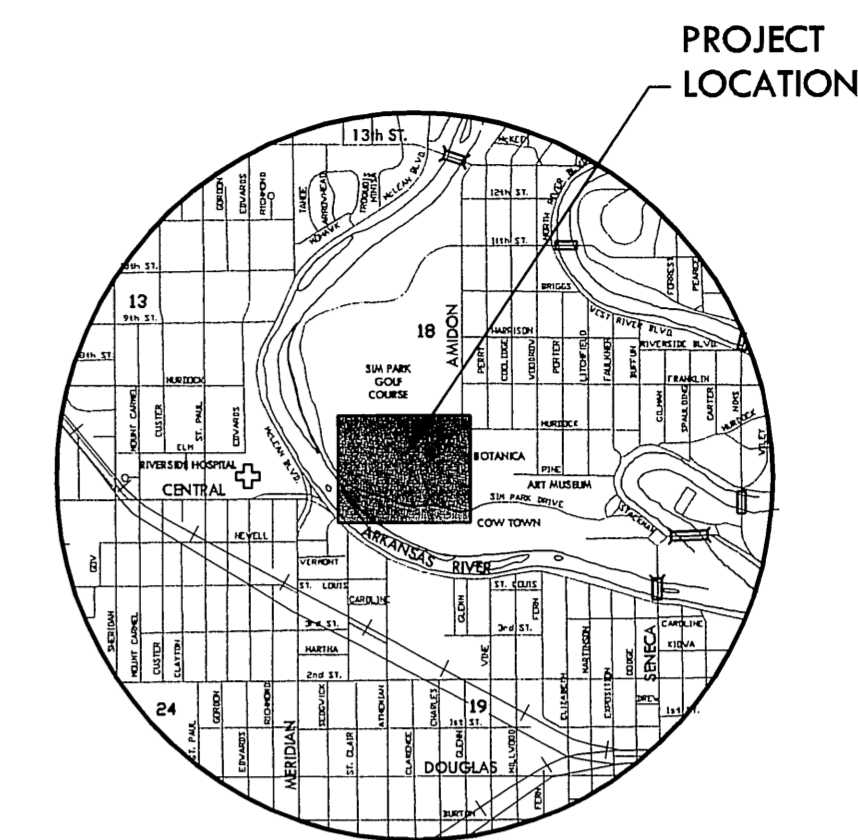
COX COMMUNICATIONS (CABLE)	262-0661
WESTAR (ELECTRIC)	383-8600
KANSAS GAS SERVICE (GAS)	832-3101
AT&T (TELEPHONE)	800-870-8390
CITY OF WICHITA WATER & SEWER	262-6000
BLACK HILLS ENERGY (GAS)	800-303-0357

- THE CONTRACTOR SHALL BE RESPONSIBLE FOR PRESERVING PROPERTY IRONS. THE CONTRACTOR WILL BE REQUIRED TO RE-ESTABLISH ANY PROPERTY IRONS WHICH ARE DAMAGED OR DESTROYED BY HIS CONSTRUCTION OPERATIONS. SUCH IRONS SHALL BE RE-ESTABLISHED BY A LICENSED LAND SURVEYOR IN ACCORDANCE WITH STATE LAWS
- EXISTING UTILITIES AND THEIR LOCATIONS, AS SHOWN ON THE PLANS REPRESENT THE BEST INFORMATION OBTAINABLE FOR DESIGN. LOCATION INFORMATION HAS BEEN OBTAINED FROM THE VARIOUS UTILITY COMPANIES AND IS EITHER FROM COMPANY RECORD DRAWINGS OR COMPANY PROVIDED FIELD LOCATIONS. THE PLAN LOCATIONS SHOWN ARE NOT GUARANTEED. ADDITIONAL EXISTING UTILITIES MAY ALSO BE ENCOUNTERED.
- RUBBLE FROM THE REMOVAL OF MISCELLANEOUS STRUCTURES AND EXCESS EXCAVATION WHICH IS TO BE WASTED SHALL BE DISPOSED OF ON SITES TO BE PROVIDED BY THE CONTRACTOR. THESE SITES SHALL BE APPROVED BY THE ENGINEER AS TO SUITABILITY, APPEARANCE AND SITE LOCATION. LOCATIONS THAT, IN THE OPINION OF THE ENGINEER, WILL LEAVE AN UNSIGHTLY APPEARANCE WILL NOT BE APPROVED. ALL DISPOSAL SITES MUST BE APPROVED BY THE KANSAS DEPARTMENT OF HEALTH AND ENVIRONMENT. MATERIAL EITHER STOCKPILED OR DISPOSED OF IN A FLOOD PLAIN WOULD REQUIRE A KANSAS STATE BOARD OF AGRICULTURE PERMIT. ANY MATERIAL DUMPED IN WATERS OF THE UNITED STATES OR WETLANDS IS SUBJECT TO U.S. CORPS OF ENGINEERS PERMITTING REGULATIONS. ANY MATERIAL BURIED OR STOCKPILED BEYOND APPROVED CONSTRUCTION LIMITS WOULD REQUIRE ADDITIONAL ARCHAEOLOGICAL INVESTIGATIONS UNLESS BURIED IN A PREVIOUSLY APPROVED BORROW LOCATION.
- A SAW CUT OF AT LEAST ONE-HALF THE DEPTH OF THE EXISTING SURFACE COURSES OR ONE-FOURTH THE DEPTH OF THE EXISTING TOTAL PAVEMENT THICKNESS SHALL BE PROVIDED AT LOCATIONS WHERE PROPOSED CONSTRUCTION ABUTS AN EXISTING SURFACE OR PAVEMENT FOR WHICH PARTIAL REMOVAL OF THAT SURFACE OR PAVEMENT IS REQUIRED. SAW JOINT TO FACILITATE REMOVAL WITHIN THREE (3) FEET OF EXISTING JOINTS WILL NOT BE PERMITTED AND FOR SUCH INSTANCES THE LIMITS OF REMOVAL SHALL EXTEND TO THE EXISTING JOINT. SUCH SAW CUTS WILL NOT BE PAID FOR DIRECTLY AND THIS COST SHALL BE CONSIDERED AS SUBSIDIARY TO THE REMOVAL OF SURFACE OR PAVEMENT.
- ALL DISTURBED AREAS TO BE SEEDED AND EROSION MAT PLACED AS REFERENCED ON SHEET 14.

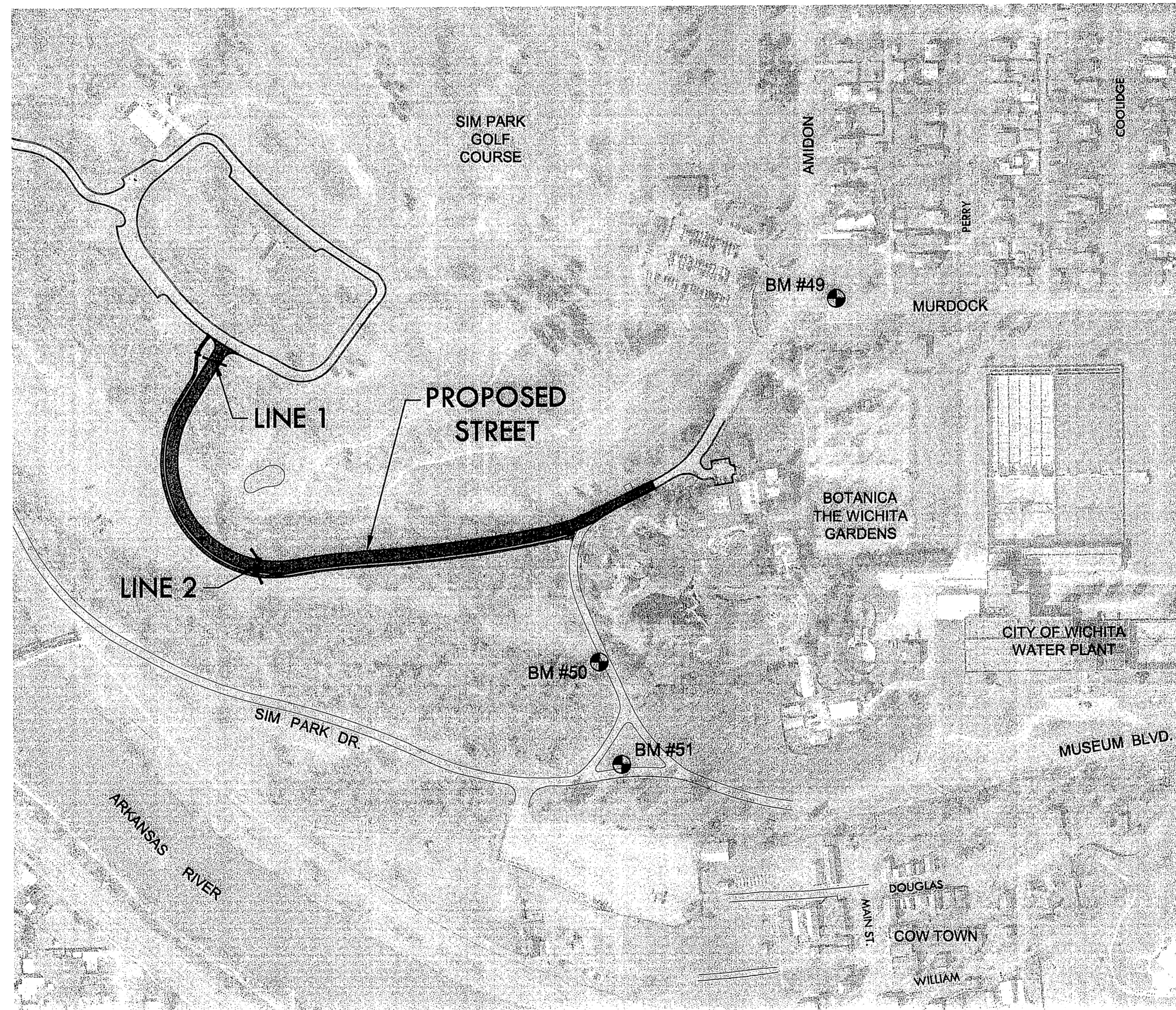
EARTHWORK SUMMARY

EXCAVATION.....5100 C.Y.
COMPACTED FILL (95%)..... 4400 C.Y.

NOTE: 15% HAS BEEN ADDED TO FILL QUANTITIES FOR COMPACTION AND HANDLING OF MATERIAL.



VICINITY MAP

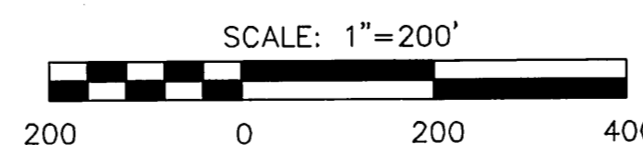


INDEX TO DRAWINGS

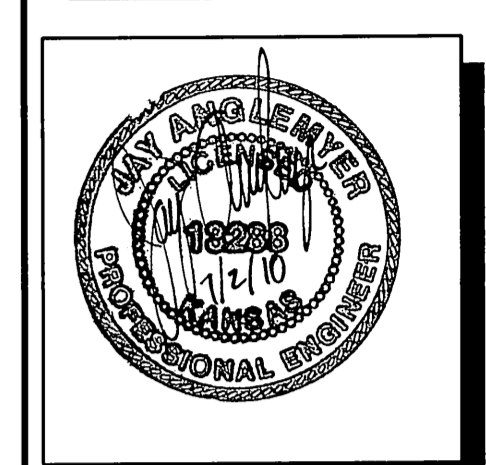
SHEET NO.	DESCRIPTION
1	TITLE SHEET
2	PAVEMENT AND TREE REMOVAL & TREE PROTECTION PLAN
3-6	PAVING DETAILS
7	ROAD CLOSING
8-11	PAVING PLANS
12	SWS DETAIL
13	LINE 1 & 2
14	GRADING & EROSION CONTROL PLAN
15	BUBBLE MAP
16-18	CROSS SECTIONS
19-23	BMP DETAILS

BENCHMARKS

- BM #49 CHISELED "X" ON TOP OF NORTH CURB OF MURDOCK, 21.0' NORTH OF CENTERLINE MURDOCK AND 61.3' EAST OF CENTERLINE AMIDON. ELEV. = 1303.04 NGVD 88
- BM #50 BRASS DISC SET IN A CONCRETE POST, 6' WEST OF THE BACK OF THE WEST CURB OF AMIDON, 280' +/- NNW OF THE CENTER OF SIM PARK DRIVE, 42.9' SSE OF HORIZONTAL CONTROL POINT #13. ELEV. = 1303.75 NGVD 88
- BM #51 CHISELED SQUARE ON SOUTHWEST CORNER OF CONCRETE VAULT IN ISLAND AT INTERSECTION OF SIM PARK DRIVE AND AMIDON, 9' NORTH OF THE BACK OF THE NORTH CURB OF SIM PARK DRIVE, 64' EAST OF THE WEST END OF THE ISLAND AND 24' WNW OF A LIGHT POLE. ELEV. = 1302.17



MKEC
ENGINEERING
CONSULTANTS, INC.
411 N. WEBB ROAD
WICHITA, K.S. 67206
316-684-9600



PAVING AND INCIDENTAL DRAINAGE PLANS FOR
BOTANICA - THE WICHITA GARDENS
STREET AND UTILITIES IMPROVEMENTS

TITLE SHEET
SHEET TITLE
472-84758
PROJECT NUMBER

DFL / DMU / GJA
DESIGNED / DRAWN / CHECKED

ISSUED
July 2010
REVISED

SHEET NO.
1 of 23

PLOTTER: Friday, July 02, 2010 @ 08:01 AM

J:\CIVIL\08603.DWG_PAV\08603_ET.DWG