

PLAN	CHECKED	CHECKED
BY		
DATE		

PROFILE	CHECKED	CHECKED
BY		
DATE		

N: 37,855.6381, E: 37,330.9403  
 WL 1, Sta. 10+01.68  
 Existing 8" Water Main \*  
 Remove 8" CI MJ Plug and begin  
 new 12" water main installation.  
 1- 8" Anchored Valve Assembly (N)  
 (MJ Gate Valve)  
 Top Valve Box El. = 1316.12  
 1- 12" x 8" CI CL MJ x PE Reducer (N)  
 Horizontal Deflection  
 Defl. = 03° 30' 00"

N: 37,890.3082, E: 37,328.5214  
 WL 1, Sta. 10+36.43  
 Horizontal Deflection  
 Defl. = 03° 30' 00"

CAUTION!!! ≠  
 Overhead Electric (Westar Energy)  
 Power Pole (Westar Energy)  
 Contractor to restrain pole in  
 place thru construction. At  
 least 72 hours prior to  
 start of construction, coordinate  
 restraint with Westar Energy,  
 Mr. Randy Truitt at 261-6512.

CAUTION!!! ≠  
 Telephone Box and Buried Line shall  
 be relocated to approximately West Right-of-  
 Way line of New York by AT&T.  
 Coordinate with AT&T, Mr. Jason Edwards  
 at 268-2008.  
 (Provide at least 2 weeks advance notice)  
 Relocation costs if any to be borne by AT&T.

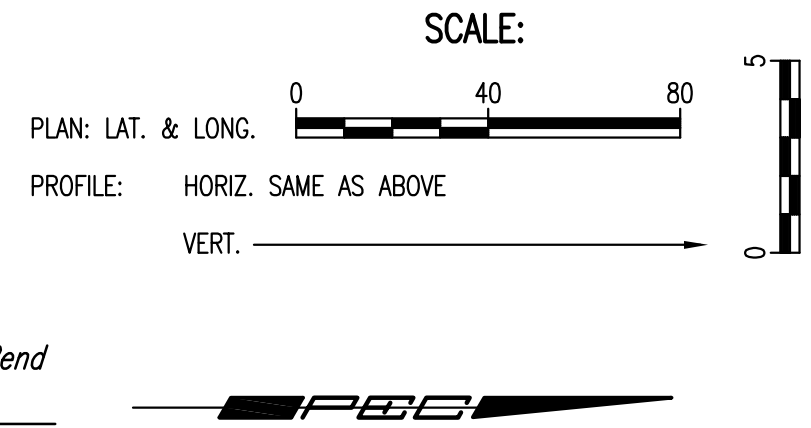
CAUTION!!! ≠  
 Overhead Electric (Westar Energy)  
 Power Pole (Westar Energy)  
 Contractor to restrain pole in  
 place thru construction. At  
 least 72 hours prior to  
 start of construction, coordinate  
 restraint with Westar Energy,  
 Mr. Randy Truitt at 261-6512.

N: 38,388.7827, E: 37,324.2489  
 WL 1, Sta. 15+34.92  
 1- 12" CI CL MJ 22 1/2" Bend  
 Defl. = 22° 30' 00"

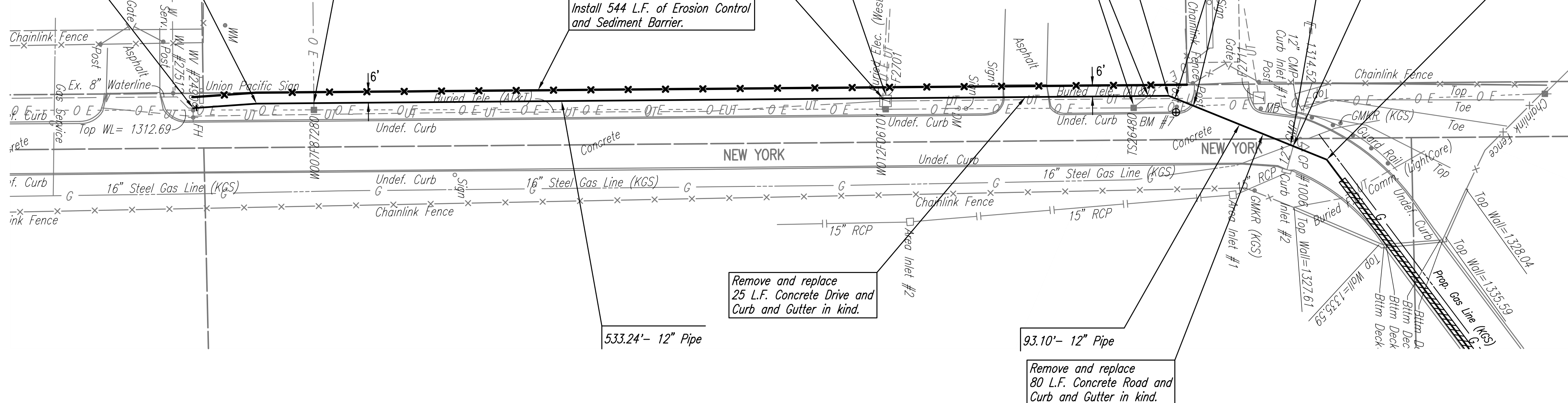
CAUTION!!! ≠  
 Buried Telephone (AT&T)  
 Overhead Electric  
 (Westar Energy)

CAUTION!!! ≠  
 16" Steel Gas Line (KGS)  
 Coordinate crossing with KGS, Mr. Jim  
 Coe at (316) 832-3126.  
 (Provide at least 2 weeks advance notice)

N: 38,475.0988, E: 37,359.1385  
 WL 1, Sta. 16+28.02  
 1- 12" CI CL PE x MJ 11 1/4" Bend  
 Defl. = 31° 00' 00"



MOPAC FIRST ADDITION



Contractor shall contain his operations to  
 remain East of the West R/W line of New  
 York Street and stay off private property.

Install 544 L.F. of Erosion Control  
 and Sediment Barrier.

Remove and replace  
 25 L.F. Concrete Drive and  
 Curb and Gutter in kind.

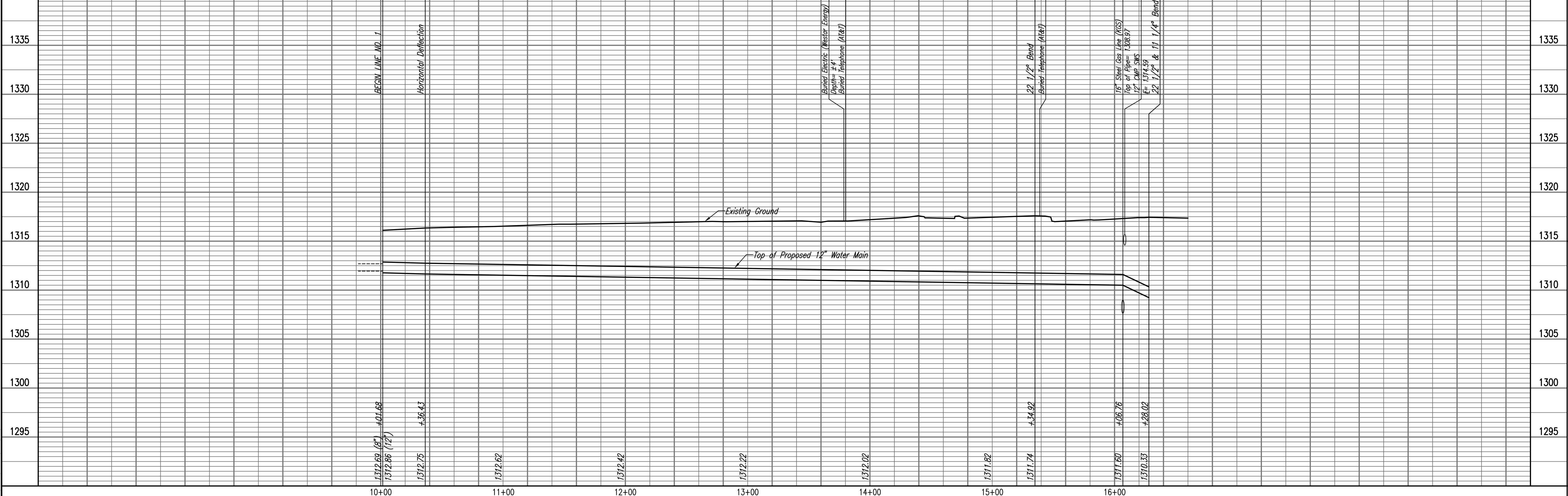
Remove and replace  
 80 L.F. Concrete Road and  
 Curb and Gutter in kind.

\* PRIOR TO BEGINNING CONSTRUCTION, THE CONTRACTOR SHALL EXCAVATE THE EXISTING 8" WATERLINE AT STATION 10+01.68 TO VERIFY PIPE SIZE, TYPE, FITTINGS, AND HORIZONTAL AND VERTICAL LOCATION. THE CONTRACTOR SHALL REPORT HIS FINDINGS TO THE ENGINEER SO THAT ANY NECESSARY PLAN MODIFICATIONS MAY BE MADE. ANY ADDITIONAL LABOR OR MATERIALS NECESSARY TO COMPLETE THE CONNECTION SHALL BE CONSIDERED SUBSIDIARY TO THE PROJECT.

≠ EXISTING UTILITIES AND THEIR LOCATIONS, AS SHOWN ON THE PLANS, REPRESENT THE BEST INFORMATION OBTAINABLE FOR THE DESIGN. PRIOR TO BEGINNING CONSTRUCTION, THE CONTRACTOR SHALL EXPOSE ALL UTILITIES CROSSED WITH THE PROPOSED WATERLINE TO VERIFY PIPE SIZE, TYPE, AND HORIZONTAL AND VERTICAL LOCATION.

NOTE:  
 CONTRACTOR SHALL MAINTAIN ACCESS TO THE ADJACENT PROPERTIES THROUGHOUT CONSTRUCTION FROM WATERLINE STATION 10+01.68 TO WATERLINE STATION 16+28.02.

WATERLINE NO. 1



Drawn: JLM  
 Date: January 2010  
 Job No.: 35-09307-259  
 Design: MDK  
 Professional Engineer  
 HEARTLAND PREPAREDNESS CENTER  
 WATERLINE IMPROVEMENTS  
 WATERLINE NO. 1  
 JAMES L. ARMOUR, P.E. - CITY ENGINEER  
 CITY OF WICHITA PROJECT NO. 448-90476

Professional Engineering Consultants, P.A.  
 603 S. TOPICKA AVENUE, WICHITA, KANSAS 67202  
 316-262-2691 • FAX 316-262-3003

Job No. 35-09307-259  
 Date January 2010

Designed By MDK  
 Drawn By JLM

HEARTLAND PREPAREDNESS CENTER  
 WATERLINE IMPROVEMENTS  
 WATERLINE NO. 1

JAMES L. ARMOUR, P.E. - CITY ENGINEER  
 CITY OF WICHITA PROJECT NO. 448-90476

Sheet 5 of 17