

Sta. 9+91.5 to Sta. 10+21.8
 @ Proposed RCB
 Const. 8'x 8'x 30.3 L.F. RCBC (Precast)
 See Sheet Nos. 7, 8, 16-20.

CAUTION !!!
 Proposed Gas Line
 Contact Nustar

Sta. 10+21.8 to Sta. 10+27.8
 @ Proposed RCB
 Const. 8'x 8'x 6.0 L.F. RCBC
 (Precast P.I. Section)
 L=6'-0" at @ of Box
 See Sheet Nos. 7, 8, 16-20.

Sta. 10+27.8 to Sta. 12+70.4
 @ Proposed RCB
 Const. 8'x 8'x 242.6 L.F. RCBC (Precast)
 See Sheet Nos. 7, 8, 14, 16-20.

Sta. 12+70.4 to Sta. 13+06.7
 @ Proposed RCB
 Const. 8'x 8' RCBC
 (Cast-in-Place Transition Section)
 See Sheet No. 11.

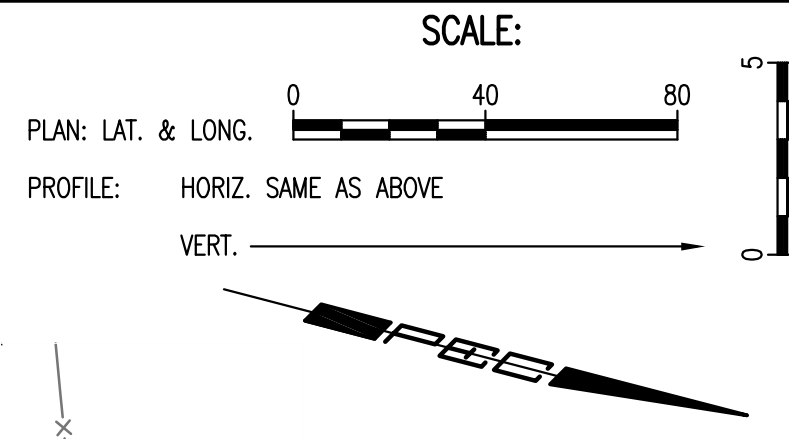
CAUTION !!!
 Proposed 8" F.P.
 (By Others)

Sta. 13+06.7 to Sta. 16+52.3
 @ Proposed RCB
 Const. 8'x 8'x 345.6 L.F. RCBC (Precast)
 See Sheet Nos. 7, 8, 14, 16-20.

CAUTION !!!
 Proposed Elec.
 (By Others)

Remove Exist. Concrete Structure,
 Headwall to Remain.
 See Sheet No. 14.

Sta. 16+52.3 to Sta. 16+63.1
 Const. Cast-in-Place Transition
 Manhole
 L=10'-8 1/2", W=12'-5 5/16"
 See Sheet Nos. 12-14.



Install Security Gate
 See Sheet No. 15.

Install Pipe Plug, See
 Detail Sheet No. 21.

Cut Existing Abandoned
 Pipeline, Remove Pipe,
 and Cap a Minimum of
 25' on Both Sides of
 the Proposed RCB. Cost
 Subsidiary to RCB
 Installation. Contact
 NuStar Prior to Cutting
 Pipe.

POINT	NORTH	EAST
7000	39,457.0224	39,158.5013
7001	39,498.1473	39,165.4659
7002	39,556.7840	39,150.1797
7003	39,785.5676	39,090.5374
7004	39,949.8277	39,047.7159
7005	40,110.5038	39,005.8287
7006	40,115.7196	39,004.4690
7007	40,172.6471	38,989.6284

7000 = COORDINATE POINT NO.

Install 901 S.Y.
 Heavy Stone Riprap
 See Sheet No. 21.

Install 548 S.Y. BMP, Erosion Control Mat
 Turf Reinforcement Mat
 Landlok TRM 450 or North
 American Green C350
 or Equivalent, Per
 Manufacturer Recommendations.

Sta. 9+83.1 to Sta. 9+91.5 @ Prop. RCB
 Const. Cast-in-Place RC Headwall
 (with Energy Dissipators) and Security Gate.
 See Sheet Nos. 9, 10, & 15.

Remove Exist. Concrete
 Ditch Checks (4 Locations),
 Subsidiary to "Site Clearing".

Sta. 10+85.5 RCB
 Const. Precast Manhole Stack
 with Bolted Cover
 Dia.=4'-0"
 Top Elev.=1319.00
 See Sheet No. 21.

Sta. 10+84.82, 4.0' Rt. RCB
 Install 8.0 L.F. 30" RCP (Stub)(E) ≠
 In=1305.92 @ 6.0%
 30" RCP Shall be Flush with Inside
 Wall of RCB
 See Sheet No. 8.

Sta. 13+21.9 RCB
 Const. Precast Manhole Stack
 with Bolted Cover
 Dia.=4'-0"
 Top Elev.=1320.00
 See Sheet No. 21.

CAUTION !!!
 Prop. 30" RCP
 (By Others)

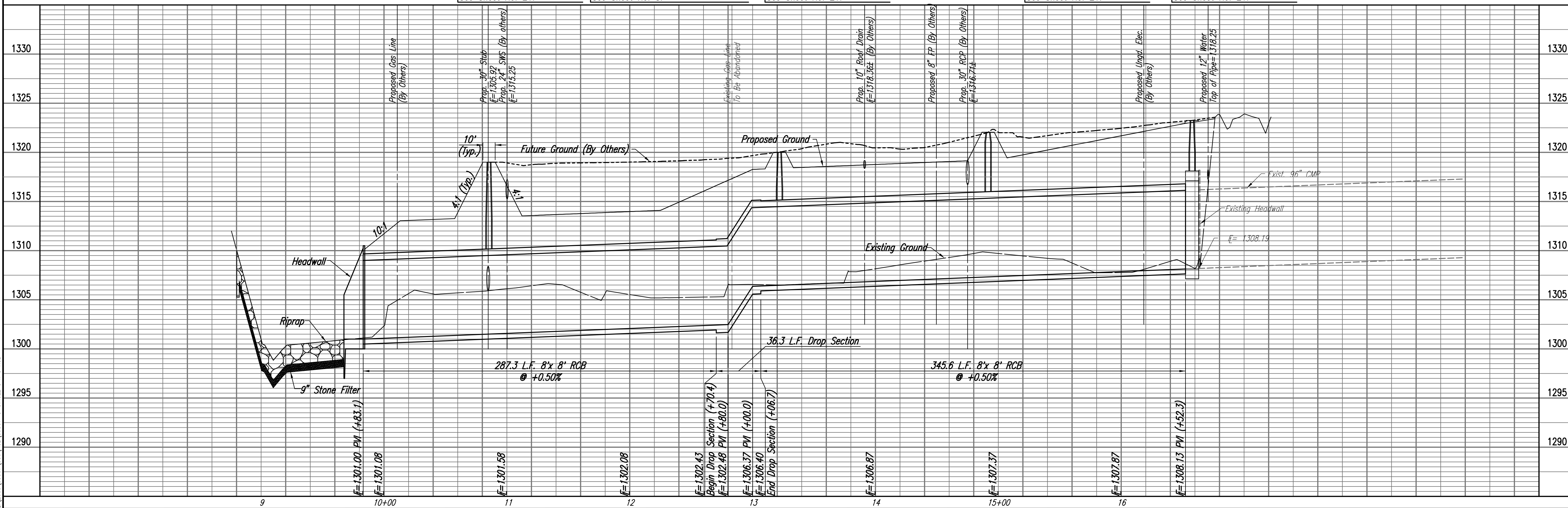
Sta. 14+91.6 RCB
 Const. Precast Manhole Stack
 with Bolted Cover
 Dia.=4'-0"
 Top Elev.=1322.05
 See Sheet No. 21.

Sta. 16+57.7 RCB
 Const. Precast Manhole Stack
 with Bolted Cover
 Dia.=4'-0"
 Top Elev.=1323.25
 See Sheet No. 21.

CAUTION !!!
 Proposed 12" Water
 City of Wichita

PLAN	CHECKED	DATE
	CHECKED	

PROFILE	CHECKED	DATE
	CHECKED	



HEARTLAND PREPAREDNESS CENTER
 SINGLE 8' X 8' REINFORCED CONCRETE BOX
SINGLE 8' X 8' RCB
 JAMES L. ARMOUR, P.E. - CITY ENGINEER
 CITY OF WICHITA, KANSAS
 JOB NO. 35-09307
 DATE December 2009

Professional Engineering Consultants, P.A.
 303 S. TORREY WICHITA, KANSAS 67202
 316-262-2091 • FAX 316-262-3003
 Designed By: BMM
 Drawn By: BUS
 Sheet 6 of XX

Drawn: 06-30-2010 4:41:32 PM by BUS
 Plot: Scale: 1:40 06-30-2010 4:42:49 PM by BUS
 Q:\2009\09307\000\RCB\09307-C-SINGLE 8' X 8' RCB