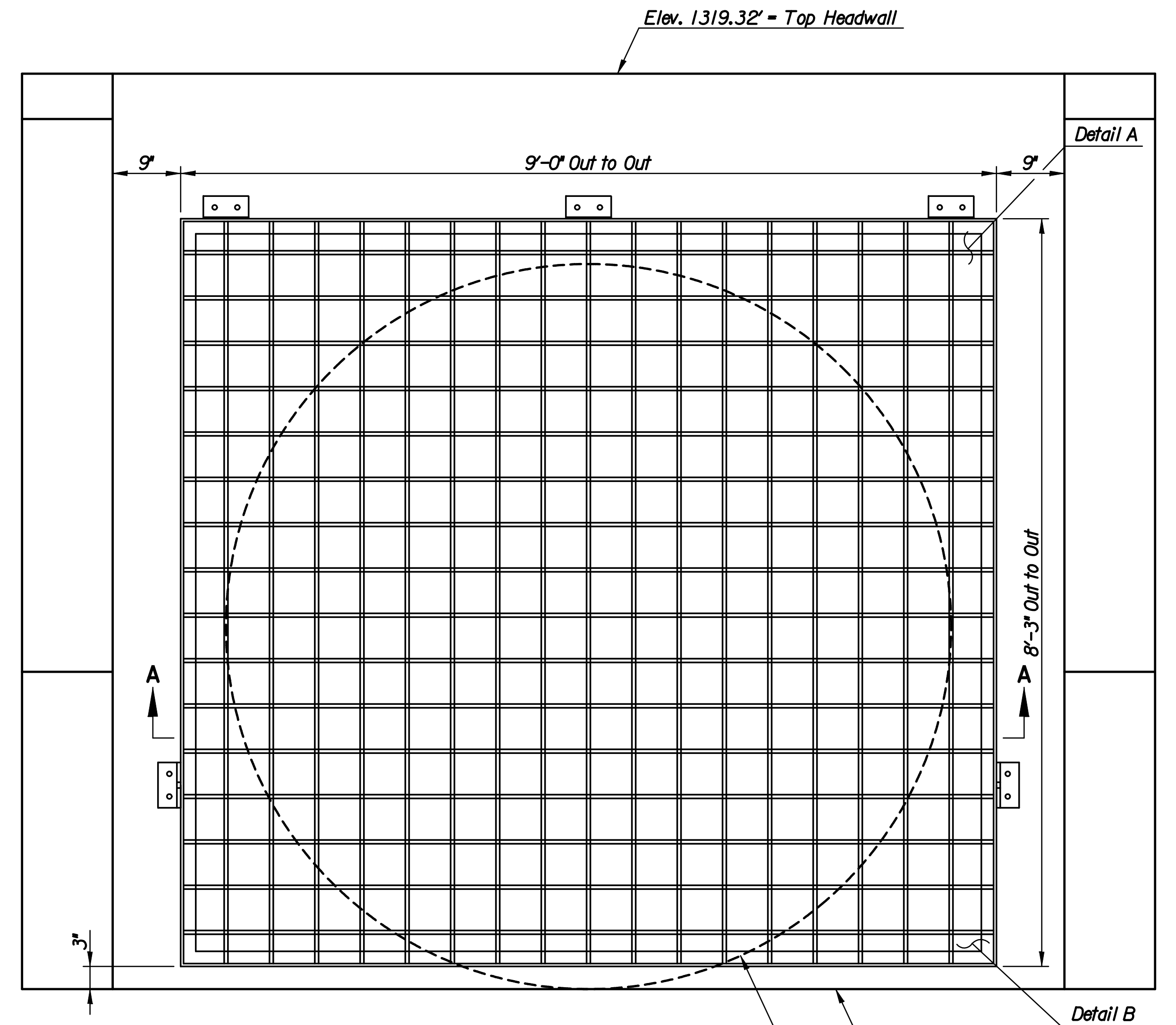
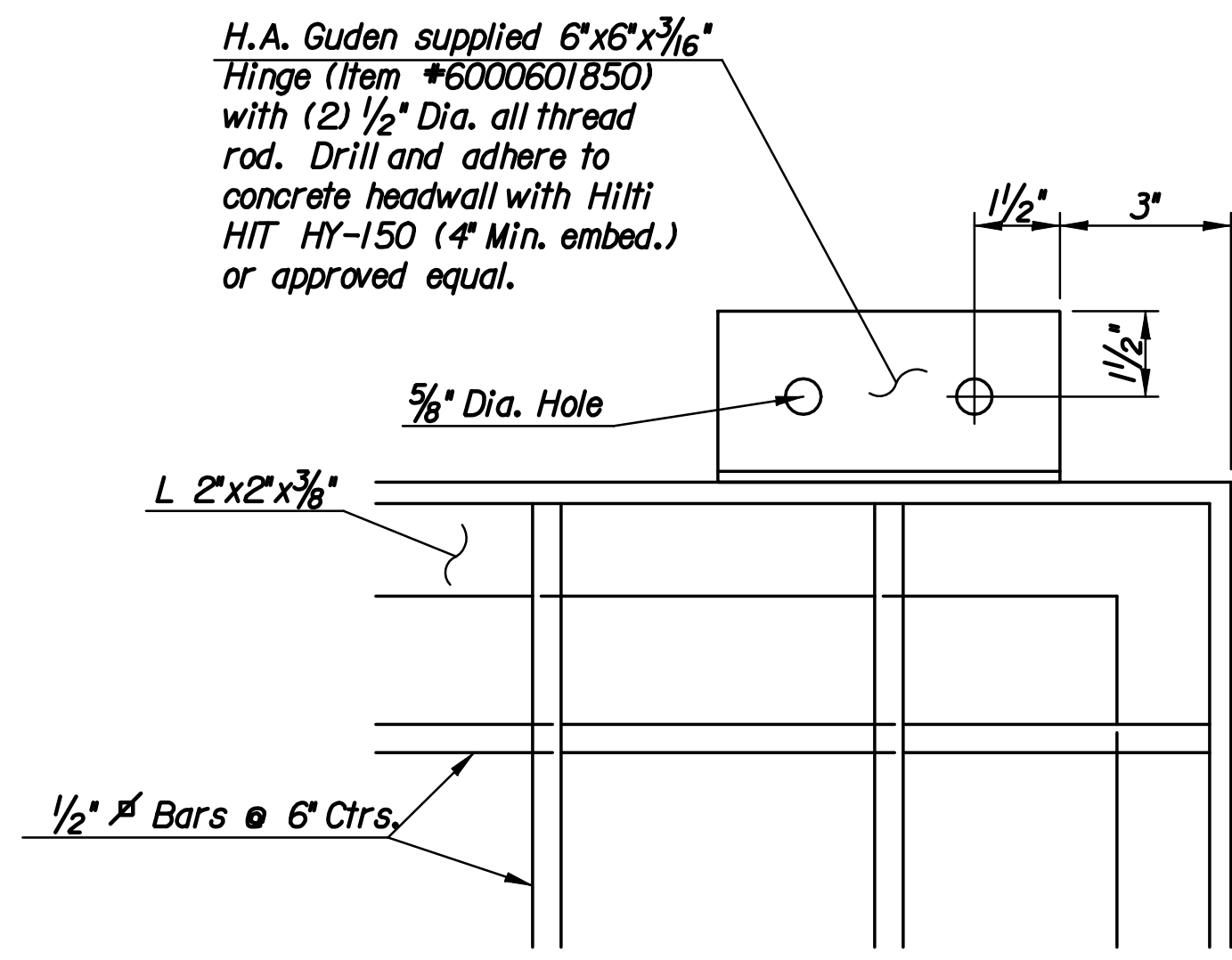


**SOUTH HEADWALL ELEVATION**

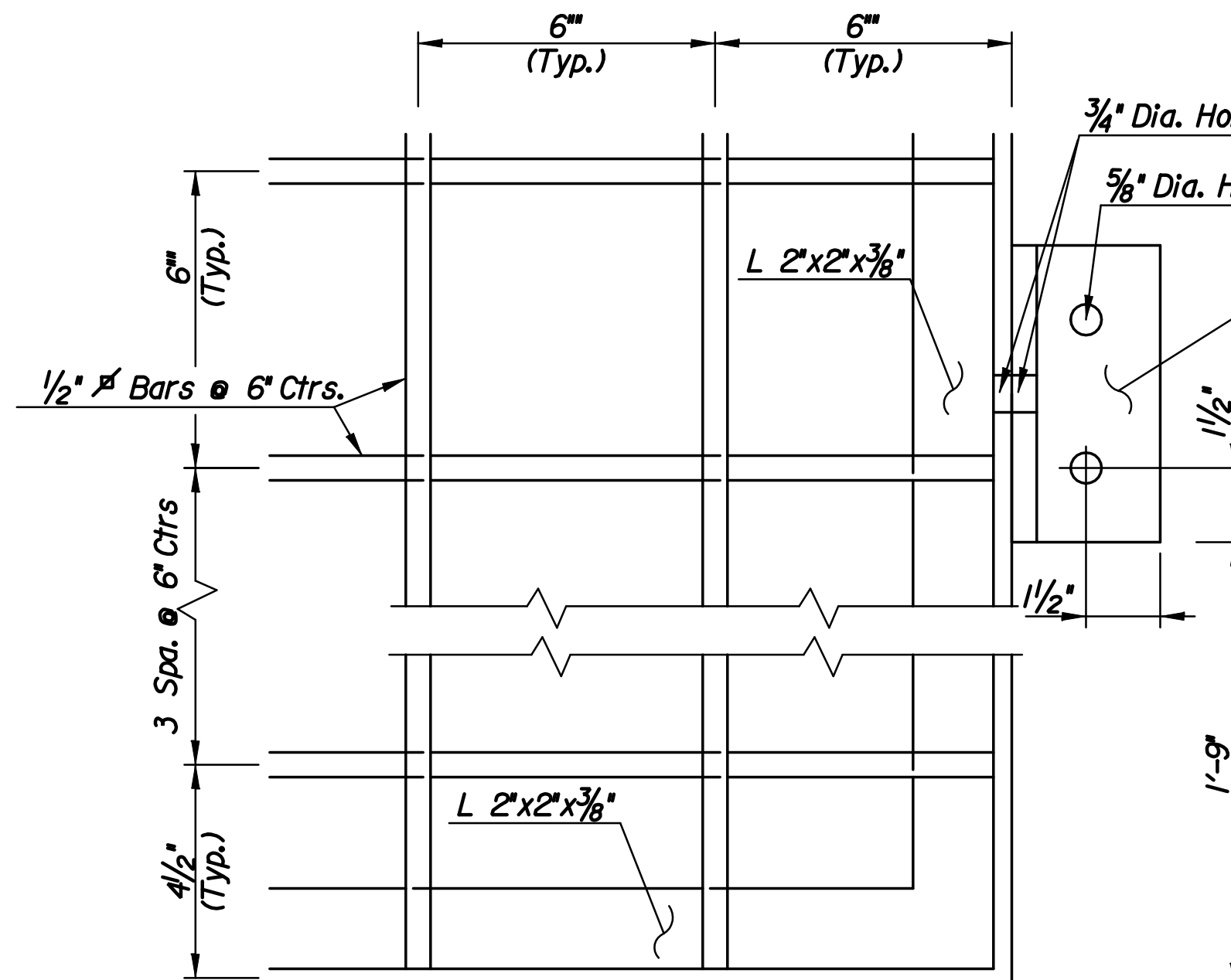


**NORTH HEADWALL ELEVATION**

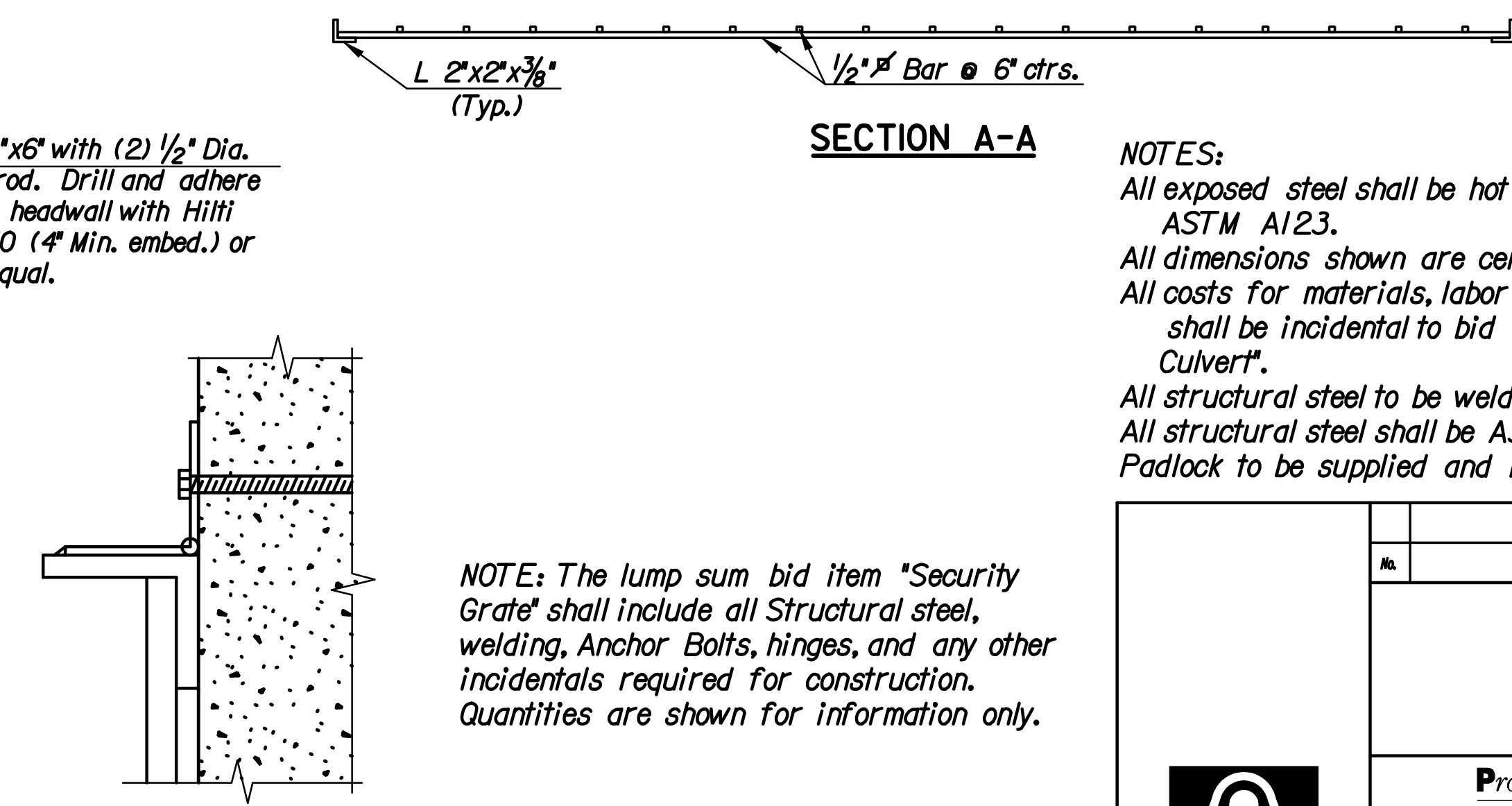
96" CMP  
Flows N to S



**DETAIL A**



**DETAIL B**

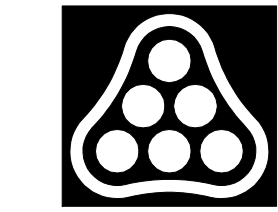


**HINGE CONNECTION DETAIL**

NOTE: The lump sum bid item "Security Grate" shall include all Structural steel, welding, Anchor Bolts, hinges, and any other incidentals required for construction. Quantities are shown for information only.

**NOTES:**  
 All exposed steel shall be hot dip galvanized in accordance with ASTM A123.  
 All dimensions shown are center of bar to center of bar.  
 All costs for materials, labor and installation of security grating shall be incidental to bid item "8'x8' Reinforced Concrete Box Culvert".  
 All structural steel to be welded via 3/16" fillet weld.  
 All structural steel shall be A36 unless noted.  
 Padlock to be supplied and maintained by Others.

Plotted By: rjm  
 Plotted: 6/30/2010  
 File: i:\2009\09307\09307-000-SecurityGate.dgn



No.	Revision	By	Date
HEARTLAND PREPAREDNESS CENTER SINGLE 8' x 8' REINFORCED CONCRETE BOX <b>SECURITY GRATE DETAILS</b> JAMES L. ARMOUR, P.E. - CITY ENGINEER CITY OF WICHITA PROJ. NO. 472-84890 <b>Professional Engineering Consultants, P.A.</b> 303 S. TOPEKA • WICHITA, KANSAS 67202 316-262-2691 • FAX 316-262-3003			
Designed by	RJM	Job No.	35-09307
Drawn by	DRP	Date	December 2009
			Sheet 15 of 29