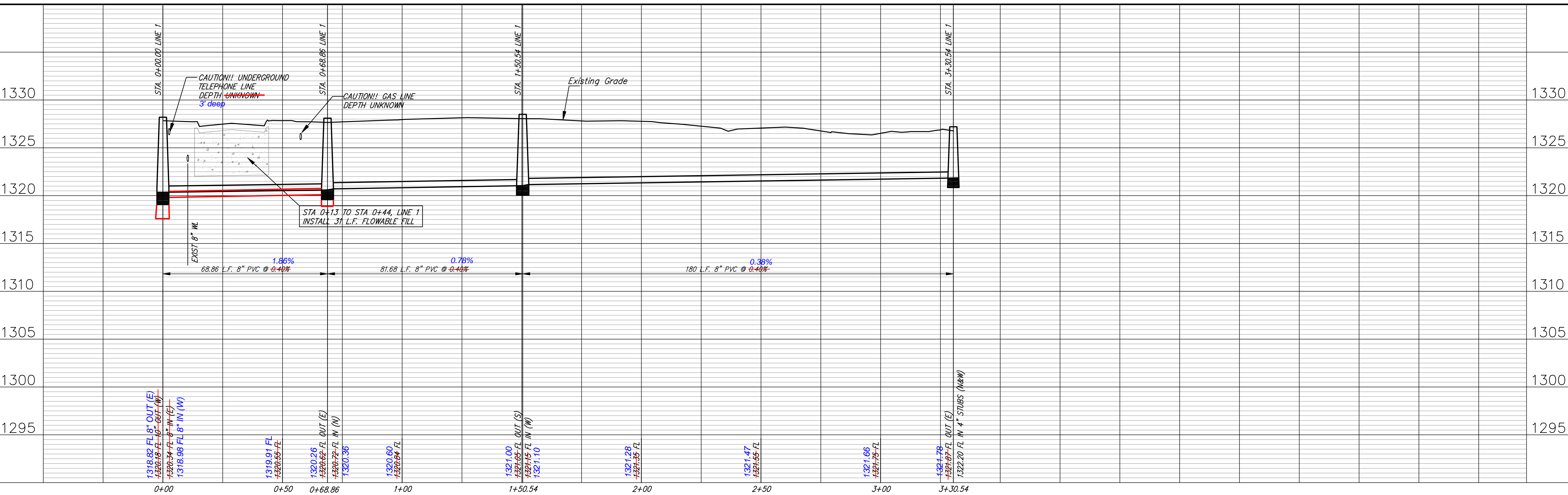


NOTES

1. TREES AND/OR STUMPS TO BE REMOVED AS REQUIRED FOR CONSTRUCTION. COST SUBSIDIARY TO SITE CLEARING AND RESTORATION.

Roughness & Boiling P.A.
 Engineering & Surveying Limited Liability Corporation
 488-84420
 May 19, 2009



SANITARY SEWER EXTENSION
LINE 1
WICHITA, KANSAS

PROJECT NUMBER: 488-84420
 SHEET NUMBER: SS LINE 1

DATE: May 19, 2009

3222X

2