

PLAN	CHECKED	DATE
	CHECKED	

PROFILE	CHECKED	DATE
	CHECKED	

N: 20,174.8289, E: 22,920.4292
Sta. 0+00.0
Core existing concrete MH wall and Install New 8" Pipe. Seal new 8" Pipe to MH with an approved waterstop gasket and non-shrink grout. Construct a minimum of 3' Reinforced Concrete Encasement from MH wall. Reshape MH floor to provide smooth flow. This work shall be considered subsidiary to the price bid for pipe in place.

SSM 4446-093, Concrete MH
Top = 1422.30
I_E = 1413.49 4" PVC (W)
I_E = 1413.17 8" PVC (E)
I_E = 1413.45 4" PVC (S)

CAUTION !!!
Gas Service Line (KGS)

CAUTION !!!
Water Service Line (City of Wichita)

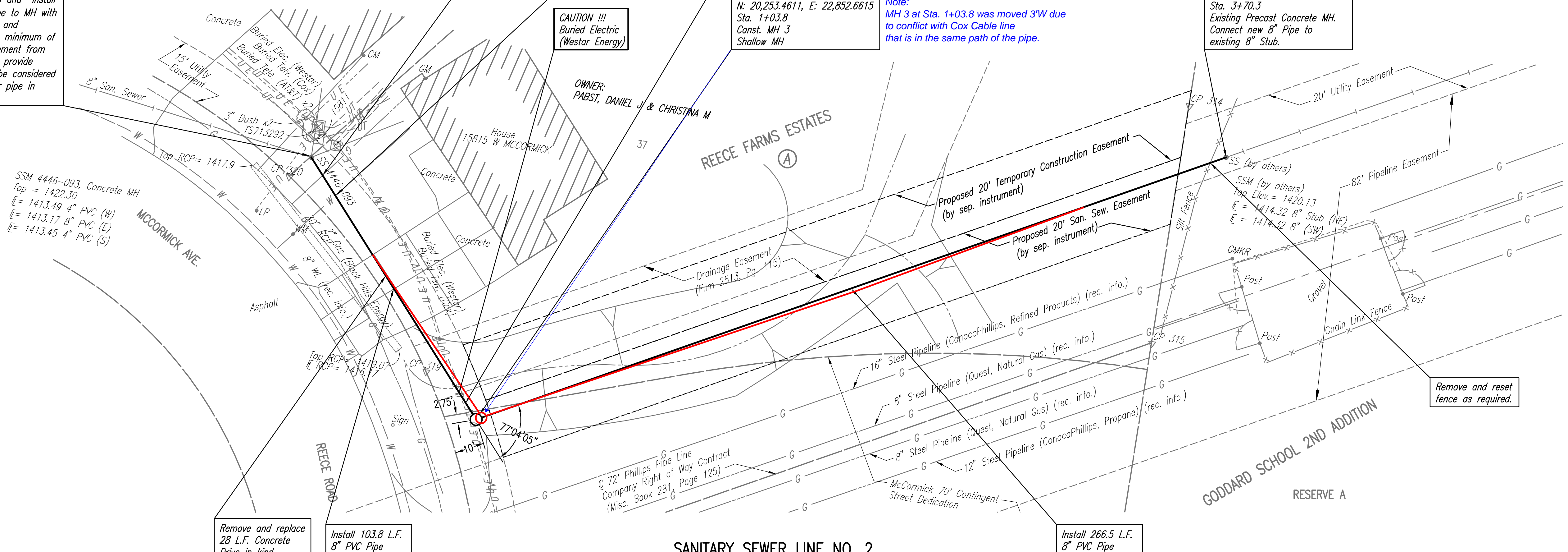
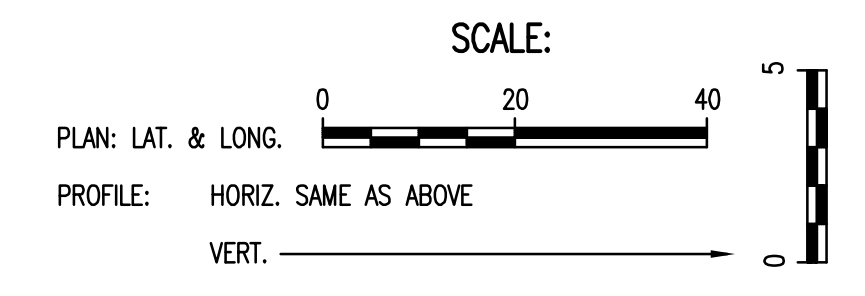
CAUTION !!!
Buried Electric (Westar Energy)

CAUTION !!!
Buried CATV (Cox Communications)

N: 20,253.4611, E: 22,852.6615
Sta. 1+03.8
Const. MH 3
Shallow MH

Note:
MH 3 at Sta. 1+03.8 was moved 3'W due to conflict with Cox Cable line that is in the same path of the pipe.

N: 20,129.0769, E: 22,617.0201
Sta. 3+70.3
Existing Precast Concrete MH. Connect new 8" Pipe to existing 8" Stub.



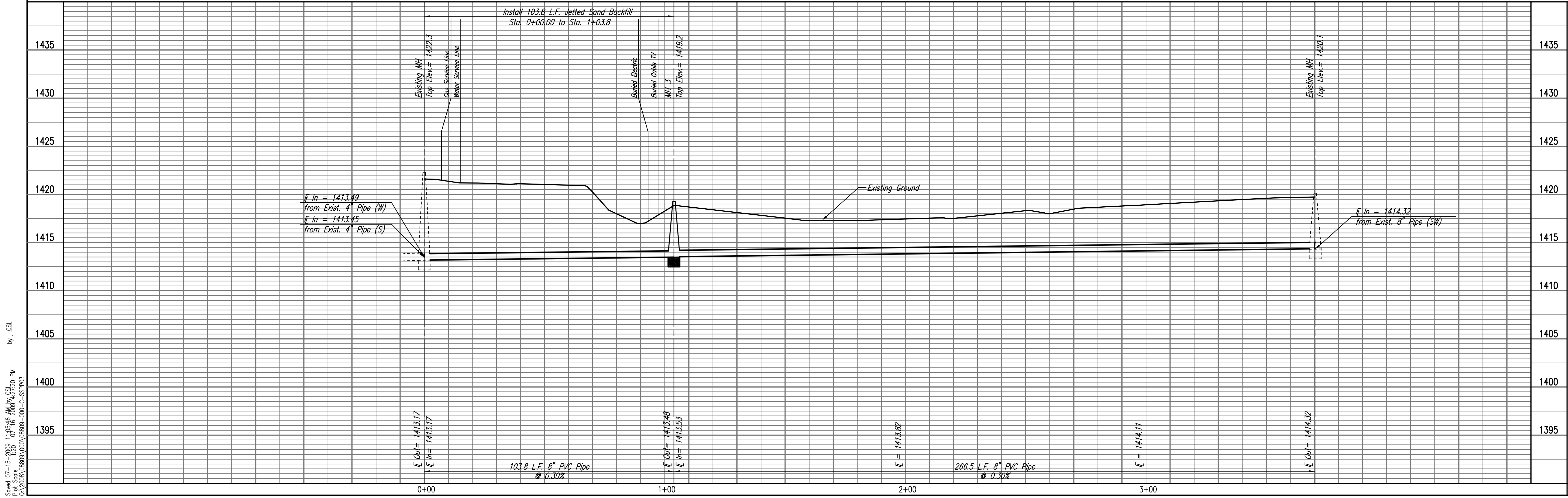
NOTE: ALL LAWN AREAS ALONG SANITARY SEWER LINE NO. 2 DISTURBED BY CONSTRUCTION SHALL BE RE-SODDED TO MATCH EXISTING GRASS TYPE, IN ACCORDANCE WITH THE GENERAL NOTES.

Remove and replace 28 L.F. Concrete Drive in kind.

Install 103.8 L.F. 8" PVC Pipe

SANITARY SEWER LINE NO. 2

Install 266.5 L.F. 8" PVC Pipe



Saved 07-15-2008 11:05:46 AM by CSJ
Plot Scale 1:30
0: 2008 (0809) 000 (0809-00-C-SSPP03)

LATERAL 59
OF THE COWSKIN INTERCEPTOR SEWER
SANITARY SEWER LINE NO. 2
JAMES L. ARMOUR, P.E. - CITY ENGINEER
CITY OF WICHITA PROJECT NO. 468-84566

Professional Engineering Consultants, P.A.
603 E. TOPICKA AVENUE, WICHITA, KANSAS 67202
316-262-2691 • FAX 316-262-3003
Designed By MDK, JEH
Date 35-08009-042
December 2008
Drawn By CSJ