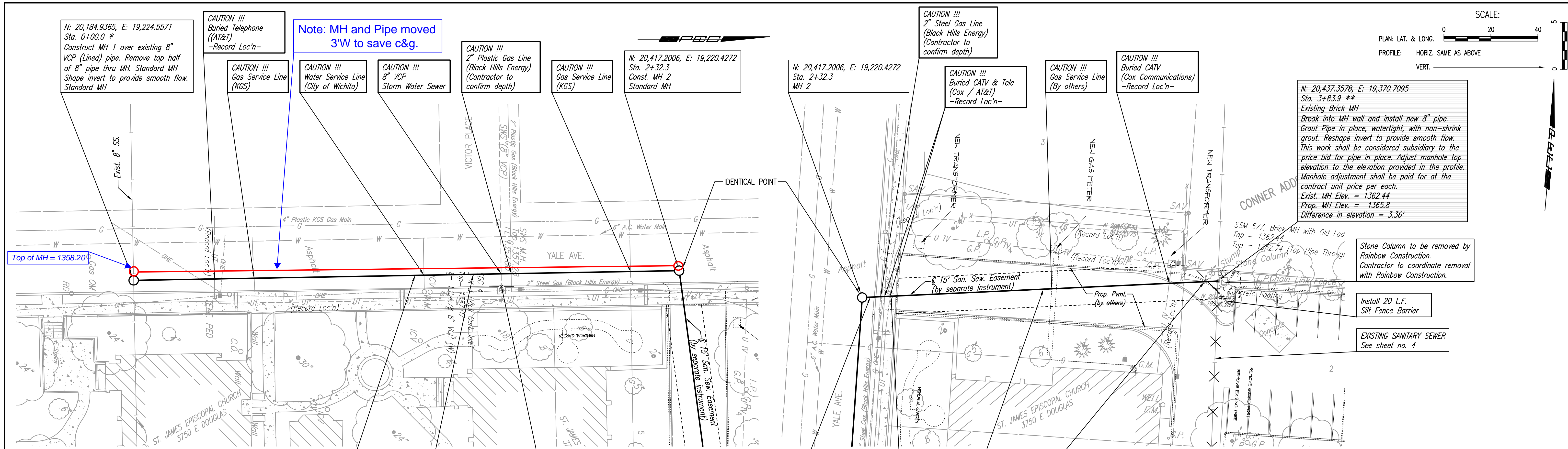


DATE	
BY	
CHECKED	
CHECKED	
PLAN	

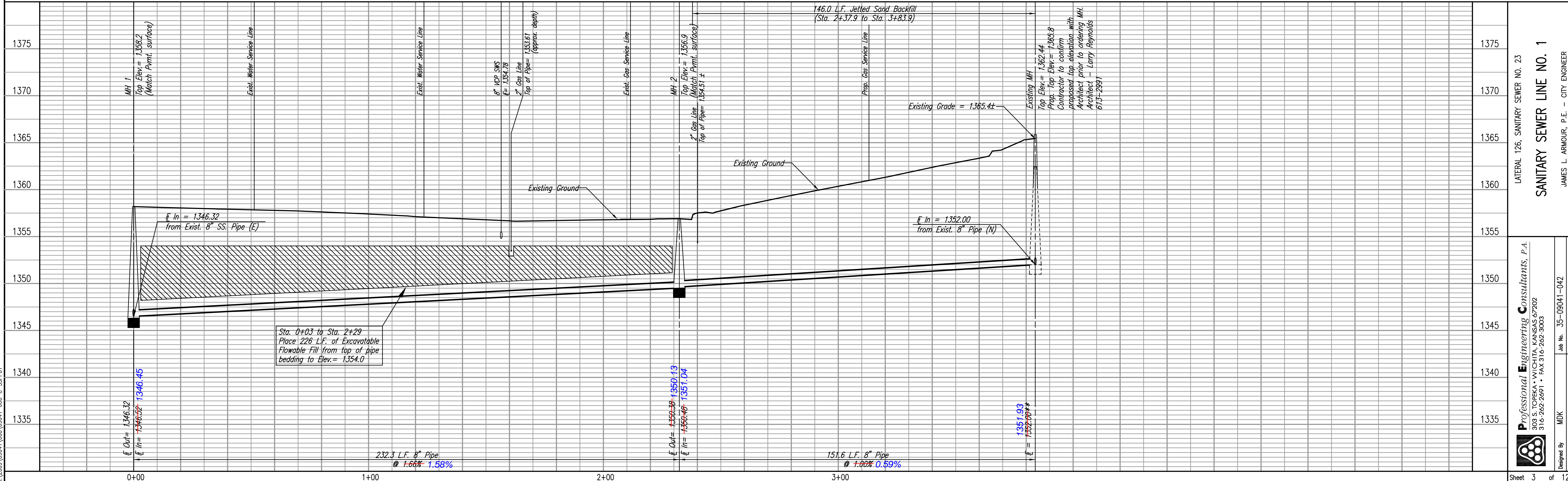


\* PRIOR TO BEGINNING CONSTRUCTION, THE CONTRACTOR SHALL EXCAVATE THE EXISTING 8" PIPE AT SANITARY SEWER STATION 0+00.00 TO VERIFY ITS HORIZONTAL AND VERTICAL LOCATION. THE PIPE LOCATION SHALL BE REPORTED TO THE ENGINEER SO THAT ANY NECESSARY PLAN MODIFICATIONS CAN BE MADE. ANY ADDITIONAL LABOR OR MATERIALS NECESSARY TO COMPLETE THE CONNECTION SHALL BE CONSIDERED SUBSIDIARY TO THE PROJECT.

Install 232.3 L.F. 8" Pipe  
 Remove and replace 240 L.F. Asphalt Pavement in kind.  
 Install Curb Inlet Protection  
 Remove and replace 6 L.F. Asphalt Pavement in kind.  
 Remove and replace 9 L.F. Concrete Drive in kind.  
 Install 151.6 L.F. 8" Pipe  
 Remove and replace Curb and Gutter in kind. (Subsidiary to "Site Clearing" and "Site Restoration")

\*\* Liner extends thru MH.  $\bar{E}$  = approximately 1352.00. Contractor shall determine actual flowline elevation of pipe entering manhole after liner is trimmed/removed thru MH during construction, and report findings to Field Engineer prior to installation of proposed pipe so that any required adjustments can be made to the profile of the Proposed Sanitary Sewer.

DATE	
BY	
CHECKED	
CHECKED	
PROFILE	



Drawn: 03-13-2009 2:51:08 PM by BCL  
 Plot: Scale: 1:20 03-16-2009 8:58:54 AM by BCL  
 G:\2009\09041\000\09041-000-C-SSPPT01

LATERAL 126, SANITARY SEWER NO. 23  
**SANITARY SEWER LINE NO. 1**  
 JAMES L. ARMOUR, P.E. - CITY ENGINEER  
 CITY OF WICHITA PROJECT NO. 468-84576

Professional Engineering Consultants, P.A.  
 603 E. TOPICKA WY. (C/O) WICHITA, KANSAS 67202  
 316-262-2691 • FAX 316-262-3003

Job No. 35-09041-042  
 Date JANUARY 2009

Designed By MDK  
 Drawn By RJW

Sheet 3 of 12