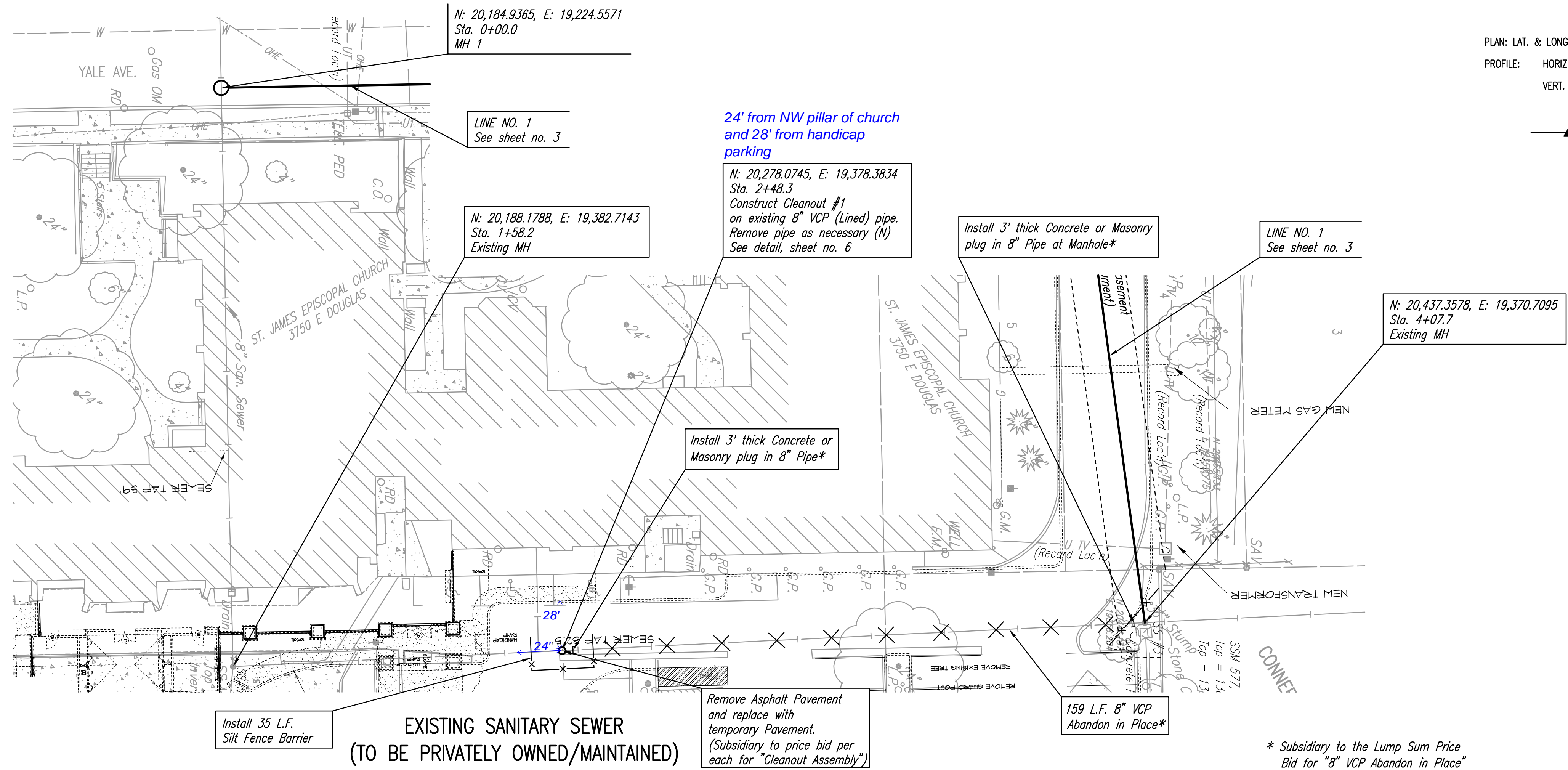


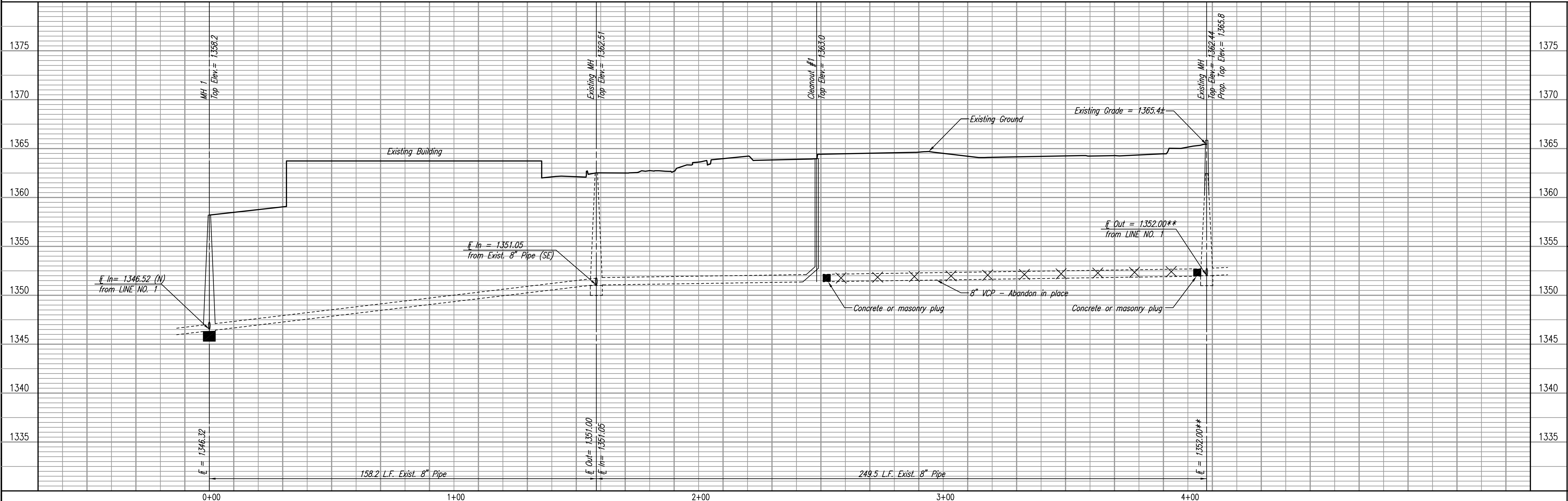
PLAN	CHECKED	CHECKED	BY	DATE
------	---------	---------	----	------

PROFILE	CHECKED	CHECKED	BY	DATE
---------	---------	---------	----	------



* PRIOR TO BEGINNING CONSTRUCTION, THE CONTRACTOR SHALL EXCAVATE THE EXISTING 8" PIPE AT SANITARY SEWER STATION 2+48.3 TO VERIFY ITS HORIZONTAL AND VERTICAL LOCATION. THE PIPE LOCATION SHALL BE REPORTED TO THE ENGINEER SO THAT ANY NECESSARY PLAN MODIFICATIONS CAN BE MADE. ANY ADDITIONAL LABOR OR MATERIALS NECESSARY TO COMPLETE THE CONNECTION SHALL BE CONSIDERED SUBSIDIARY TO THE PROJECT.

EXISTING SANITARY SEWER
(TO BE PRIVATELY OWNED/MAINTAINED)



Save: 03-13-2009 3:06:00 PM by BCL
Plot Scale: 1/20 03-16-2009 8:58:13 AM by BCL
03-2009 (09041) 000_09041-000-C-SSPP02

LATERAL 126, SANITARY SEWER NO. 23
EXISTING SANITARY SEWER
JAMES L. ARMOUR, P.E. - CITY ENGINEER
CITY OF WICHITA PROJECT NO. 468-84576

Professional Engineering Consultants, P.A.
603 E. TOPICKA AVENUE, WICHITA, KANSAS 67202
316-262-2691 • FAX 316-262-3003
Job No. 35-09041-042 Date JANUARY 2009
Designed By MDK Drawn By RJW
Sheet 4 of 12