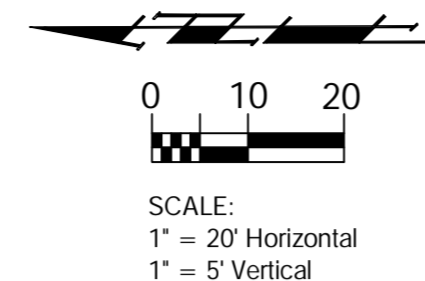


Benchmarks

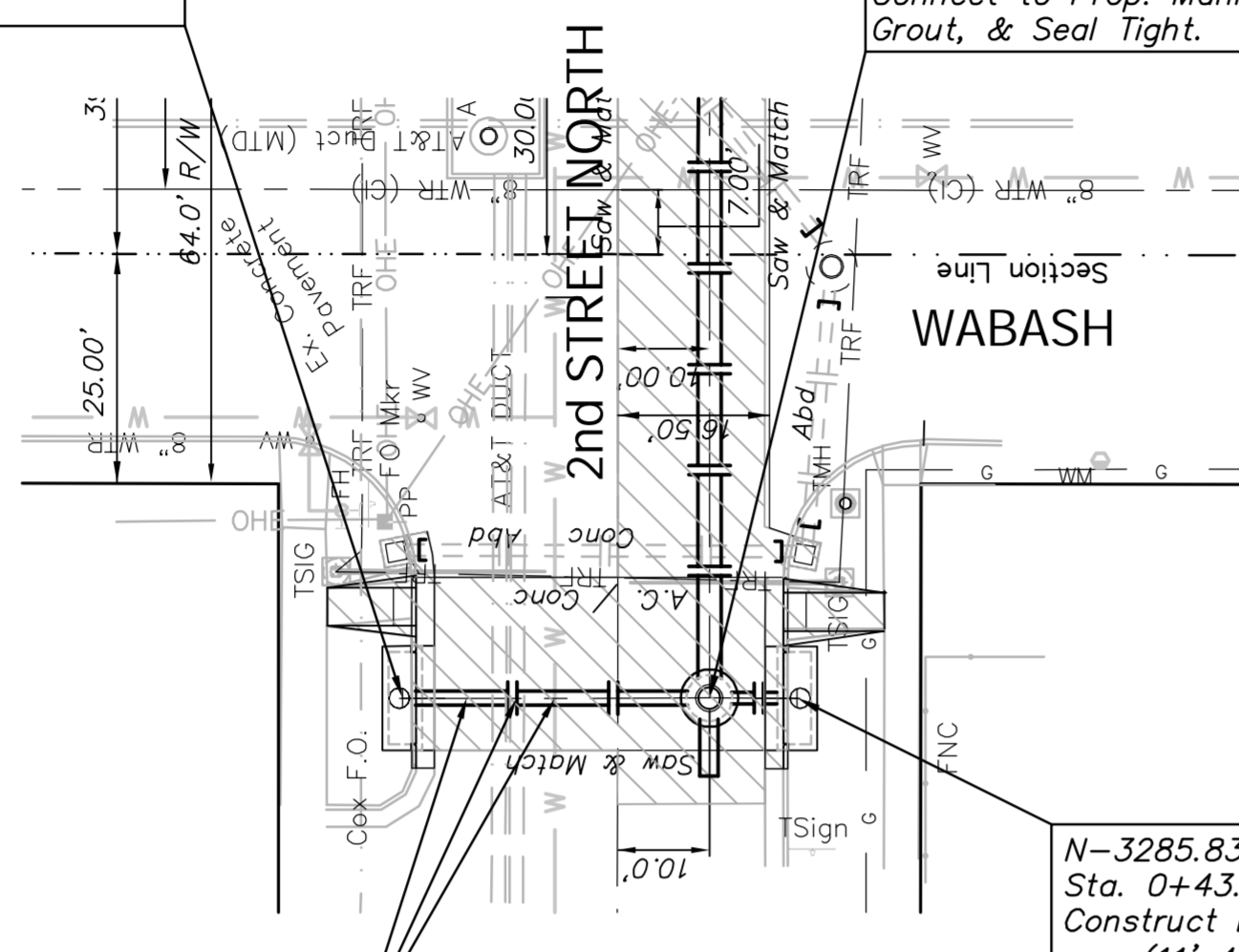
BM #2- Chiseled "+" Located in sidewalk @ the NWPC of the Intersection of Wabash Ave. and 2nd Street North.  
Elev. = 1297.15 (MSL)



N-3328.85 E-2300.65  
Sta. 0+00.00, Begin SWS Line 5a  
Construct Double Type 1 Inlet  
(11' 4" X 4' 4")  
Top Elev = 1296.82

N-3295.40 E-2300.65  
Sta. 0+33.47, SWS Line 5a =  
Sta. 0+08.50, SWS Line 5  
Connect to Prop. Manhole,  
Grout, & Seal Tight.

N-3285.83 E-2300.65  
Sta. 0+43.01, End SWS Line 5a  
Construct Double Type 1 Inlet  
(11' 4" X 4' 4")  
Top Elev = 1297.03

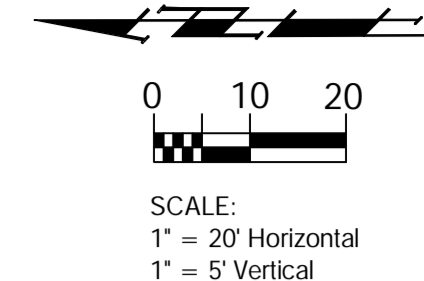


**CAUTION**  
Existing  
AT&T Duct  
(X 2)  
8" Water  
Crossings

LINE 5a

Benchmarks

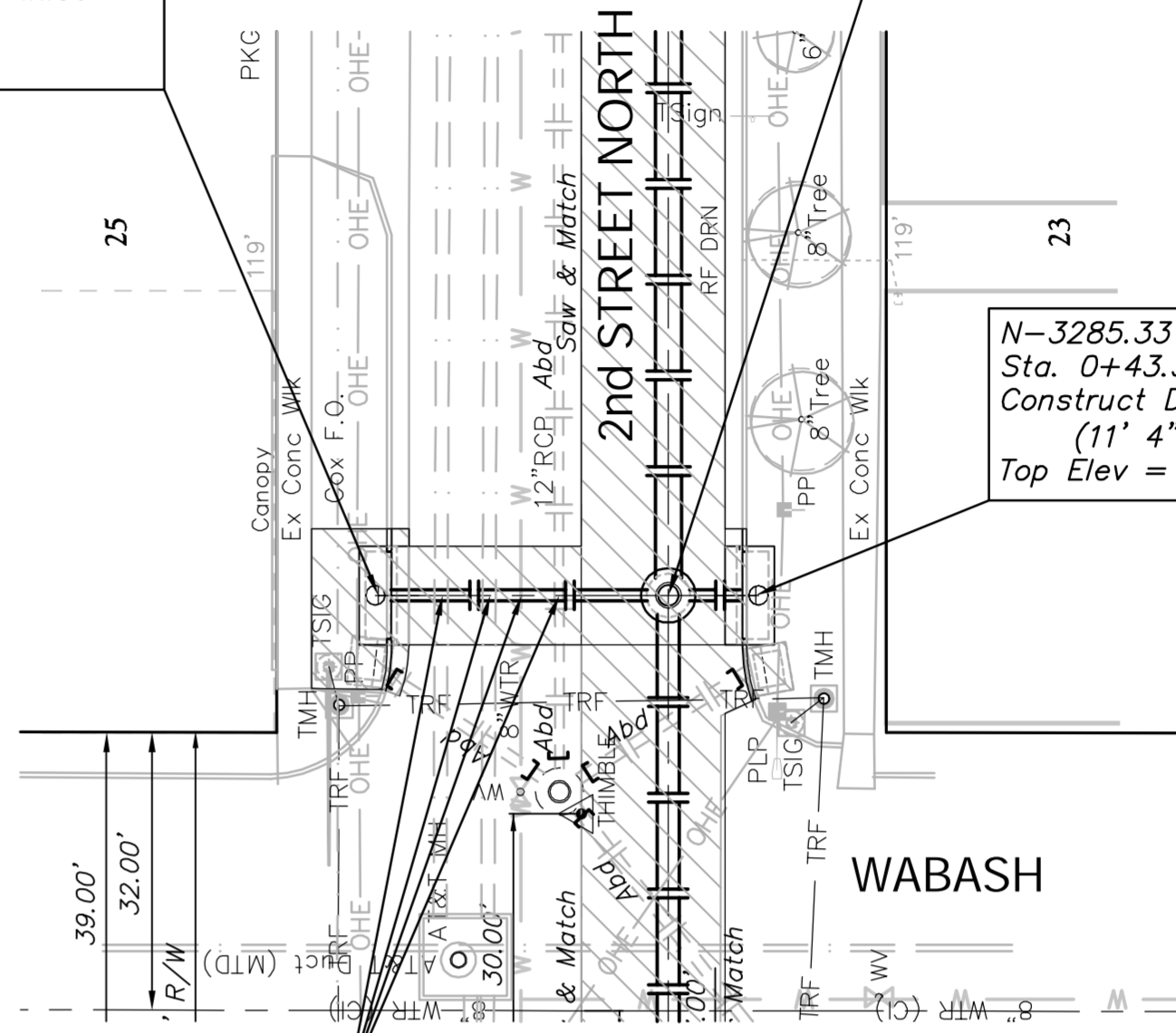
BM #2- Chiseled "+" Located in sidewalk @ the NWPC of the Intersection of Wabash Ave. and 2nd Street North.  
Elev. = 1297.15 (MSL)



N-3328.67 E-2403.74  
Sta. 0+00.00, Begin SWS Line 5b  
Construct Double Type 1 Inlet  
(11' 4" X 4' 4")  
Top Elev = 1296.70

N-3295.35 E-2403.74  
Sta. 0+33.32, SWS Line 5b =  
Sta. 1+11.59, SWS Line 5  
Connect to Prop. Manhole,  
Grout, & Seal Tight.

N-3285.33 E-2403.74  
Sta. 0+43.36, End SWS Line 5b  
Construct Double Type 1 Inlet  
(11' 4" X 4' 4")  
Top Elev = 1296.65



**CAUTION**  
Existing  
AT&T Duct  
(X 2)  
8" Water  
12" SWS  
Crossings

LINE 5b

