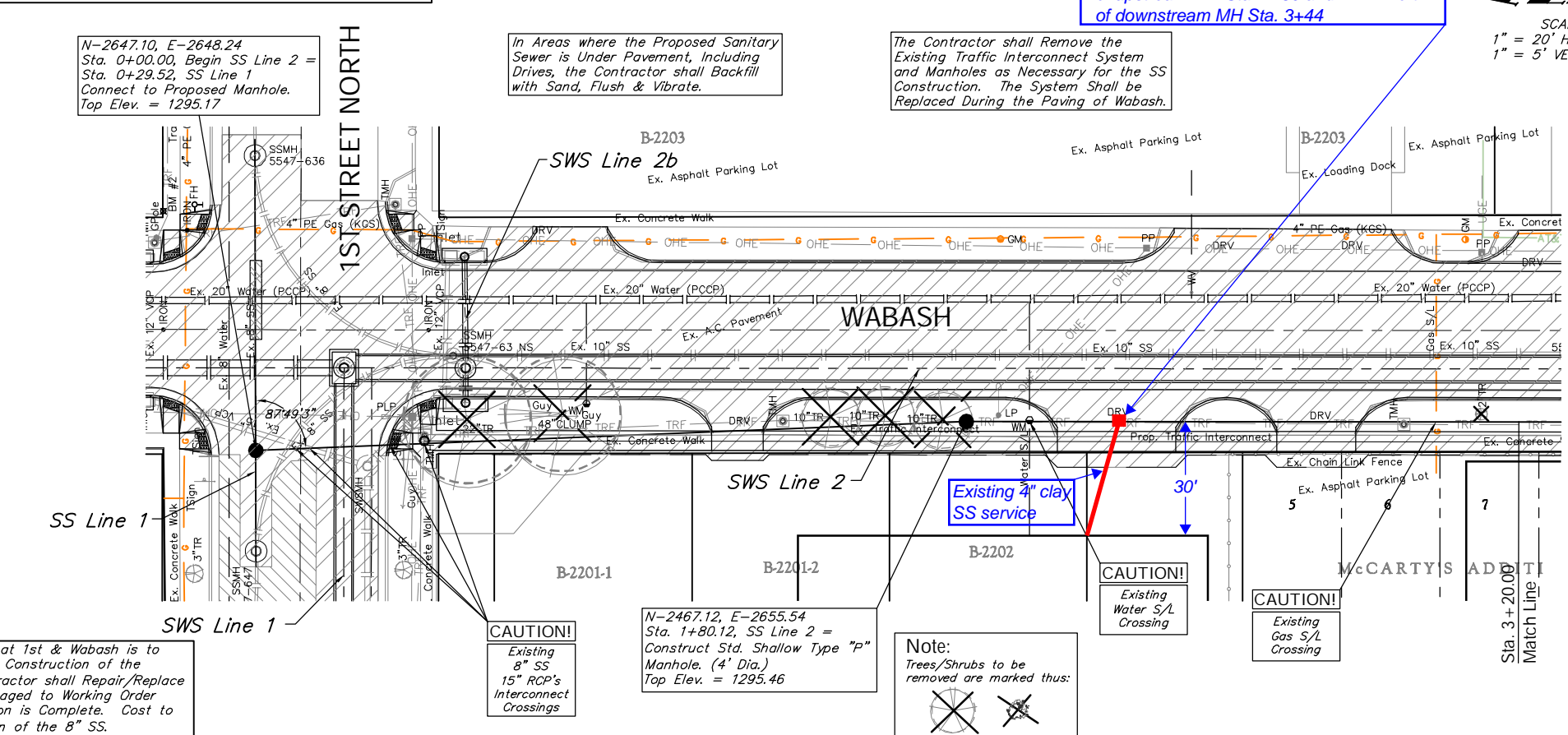
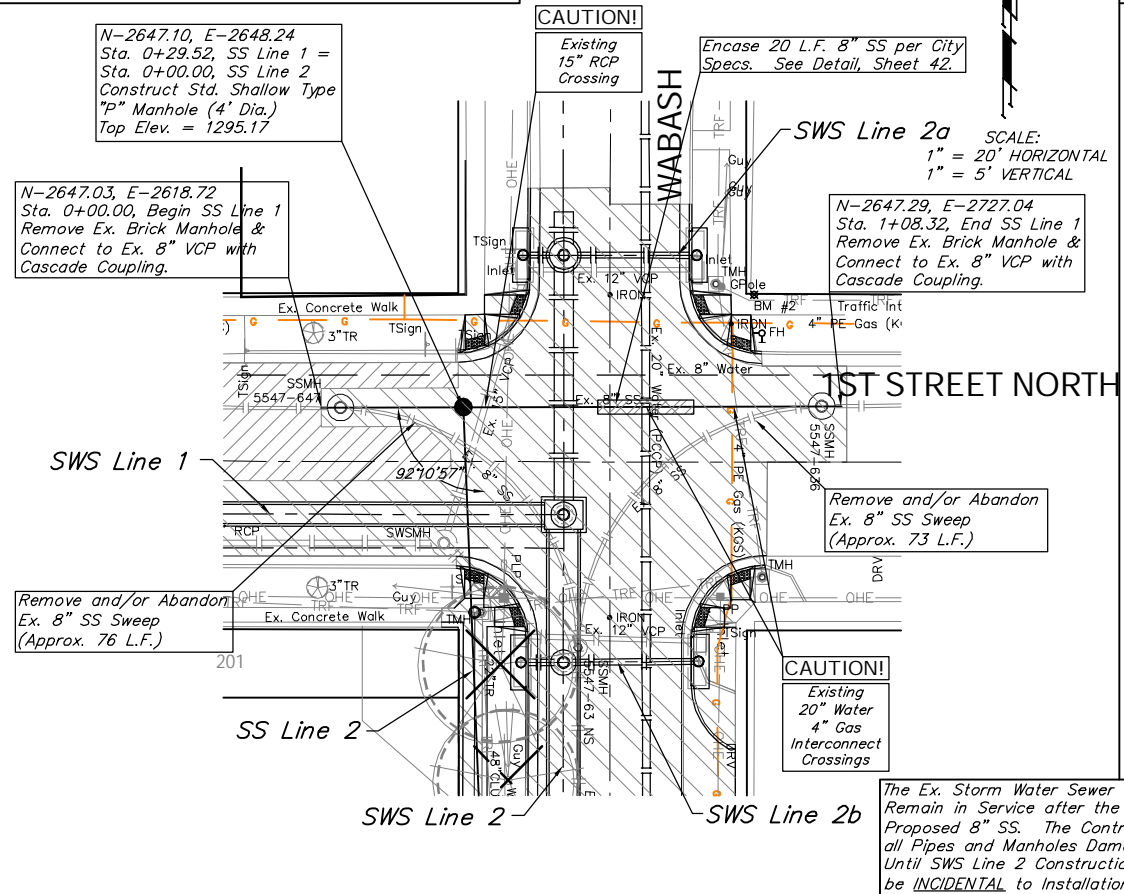


BENCHMARK:  
 BM #2 - Chiseled "+" Located in the Northeast Corner of the Intersection of Wabash and 1st Street North, 30.0' East and 34.8' North of the Centerline of Both.  
 Elev. = 1295.76 (MSL)

BENCHMARK:  
 BM #2 - Chiseled "+" Located in the Northeast Corner of the Intersection of Wabash and 1st Street North, 30.0' East and 34.8' North of the Centerline of Both.  
 Elev. = 1295.76 (MSL)

SS Tap information @ 145 S Wabash  
 4" PVC tap to new 12" SS line at 8' Rt. of main located at Sta. 2+20, Rt. @ 40 lf south of upstream MH Sta. 1+80 and 124 lf north of downstream MH Sta. 3+44

SCALE:  
 1" = 20' HORIZONTAL  
 1" = 5' VERTICAL



Drawing File: E:\eng\Old Town Drainage\Land\dwg\OTD Base.dwg (SS01)  
 Design: KK/TPV  
 Date: SS/TPV  
 Approved: TPV  
 Project No. 05-05-E258 CITY OF WICHITA, KANSAS  
**SANITARY SEWER PLAN & PROFILE**  
 SS Line 1 & SS Line 2, Sta. 0+00.00 to 3+20.00  
 DOUGLAS AVENUE DRAINAGE OUTFALL PROJECT

1+80.12 2+00 3+00 3+20.00

July 2007  
 26 OF 87

**Baughman Company, P.A.**  
 315 Ella St. Wichita, KS 67211 P 316-262-7271 F 316-262-0149  
 ENGINEERING | SURVEYING | PLANNING | LANDSCAPE ARCHITECTURE