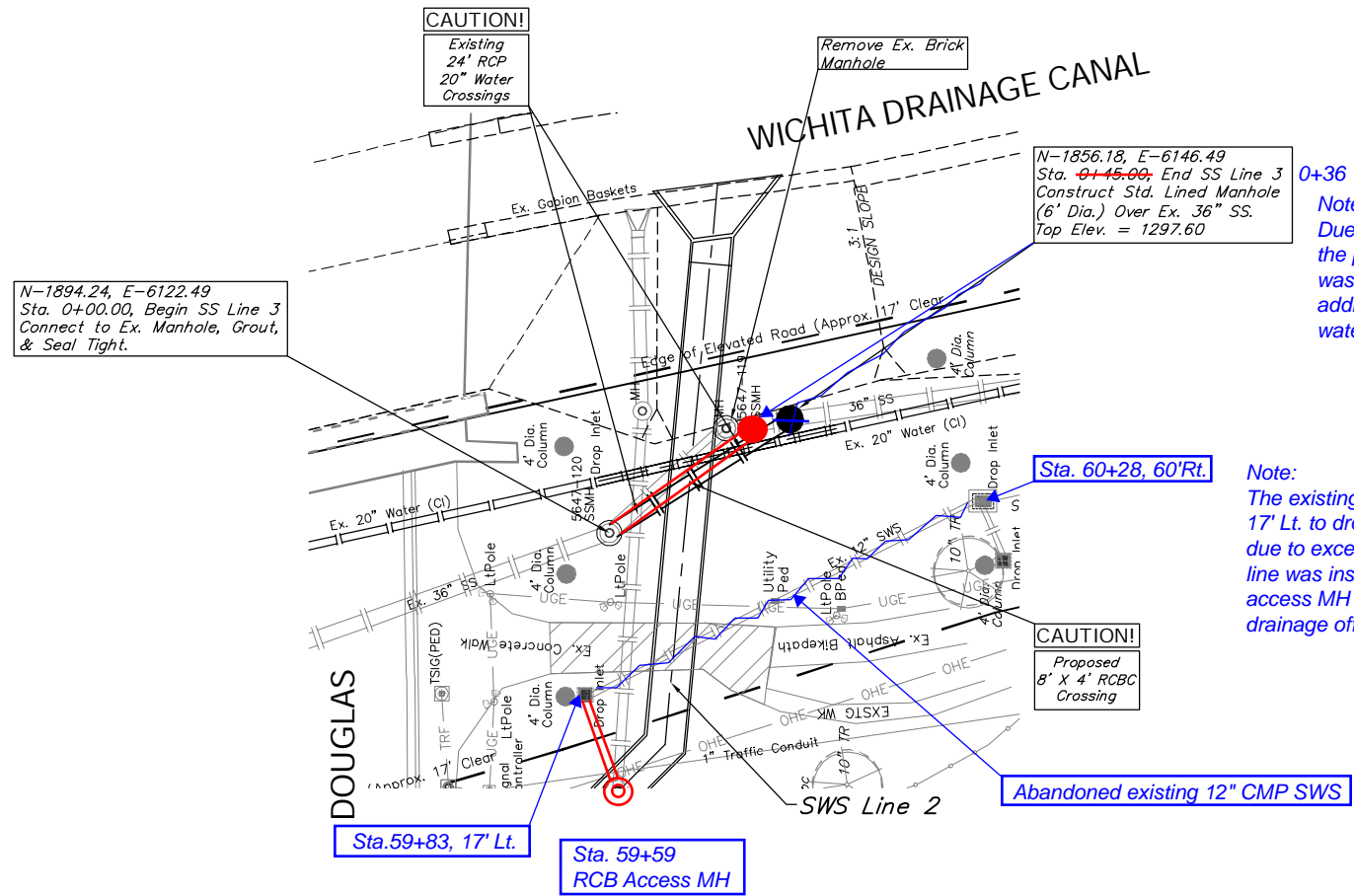


BENCHMARK:  
 BM #8 - City of Wichita Disc Located on Top of the Corral Rail  
 at the Southwest Corner of the Douglas Street Bridge  
 Over the Wichita Drainage Canal.  
 Elev. = 1300.27 (MSL)

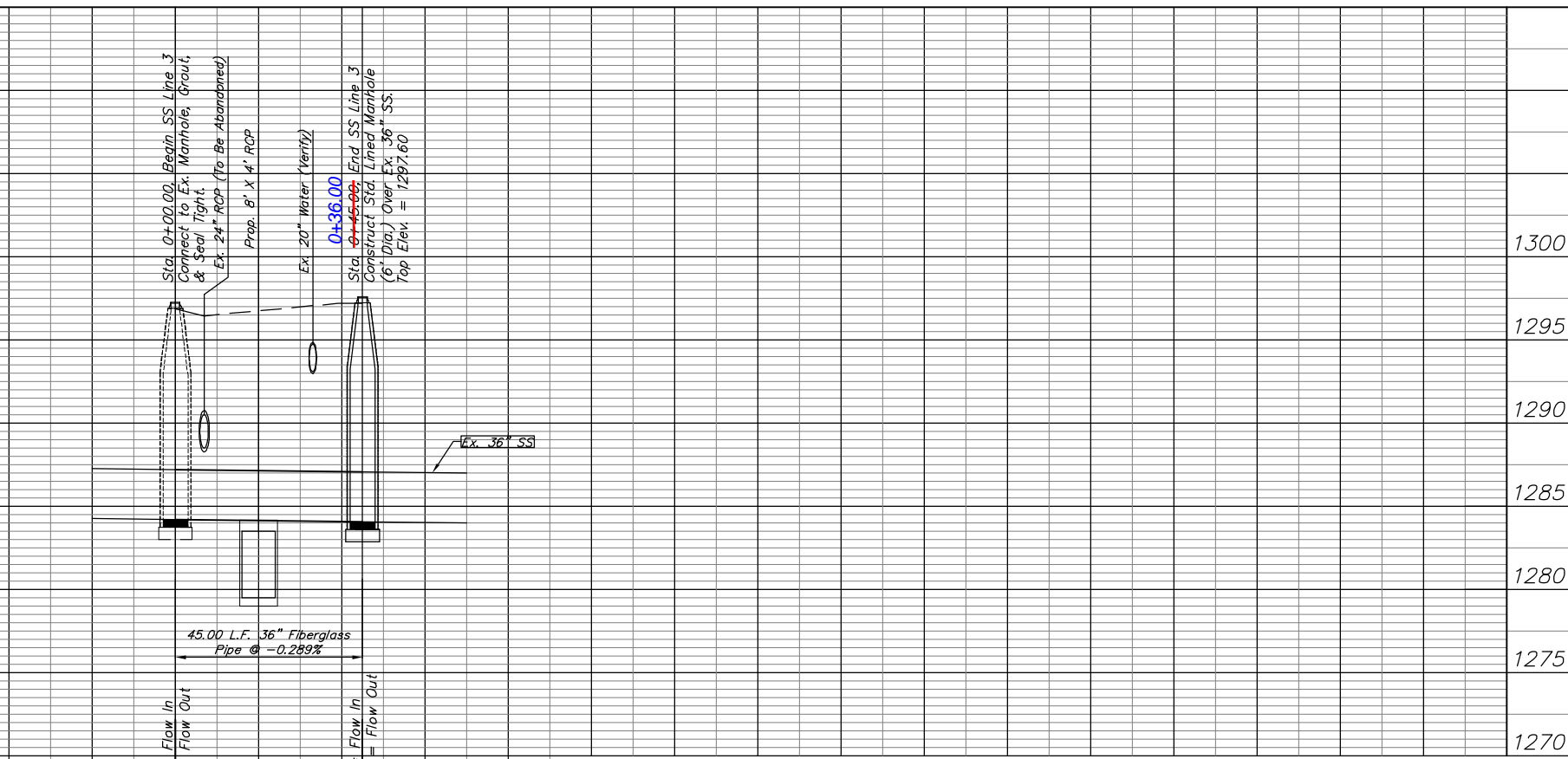
SCALE:  
 1" = 20' HORIZONTAL  
 1" = 5' VERTICAL



**0+36**  
 Note:  
 Due to existing field location of 20" waterline,  
 the proposed SS MH Sta. 0+45, SS line #3  
 was moved to Sta. 0+36. This allowed  
 additional clearance for re-connection of 20"  
 waterline.

**Sta. 60+28, 60'Rt.**  
 Note:  
 The existing 12" CMP SWS from drop inlet Sta. 59+83,  
 17' Lt. to drop inlet Sta. 60+28, 60' Rt. was abandoned  
 due to excessive deterioration of CMP. A new 12" PVC  
 line was installed from drop inlet Sta. 59+83, 17' Lt. into  
 access MH over RCB - Sta. 59+59 to provide positive  
 drainage off I-135.

Abandoned existing 12" CMP SWS



Drawing File: E:\eng\Old Town Drainage\Land\dwg\OTD Base.dwg (SS04)  
 Design: TPV  
 Date: SS/TPV  
 Approved: TPV  
 Project No. 05-05-E258 CITY OF WICHITA, KANSAS  
**SANITARY SEWER PLAN & PROFILE**  
 SS Line 3  
 DOUGLAS AVENUE DRAINAGE OUTFALL PROJECT

**Baughman Company, P.A.**  
 315 Ellis St. Wichita, KS 67211 P 316-262-7271 F 316-262-0149  
 ENGINEERING | SURVEYING | PLANNING | LANDSCAPE ARCHITECTURE

July 2007  
 SHEET  
 29  
 OF  
 87