

**MT VERNON STREET AND
DRAINAGE IMPROVEMENTS
FROM GREENWAY TO BROADWAY**

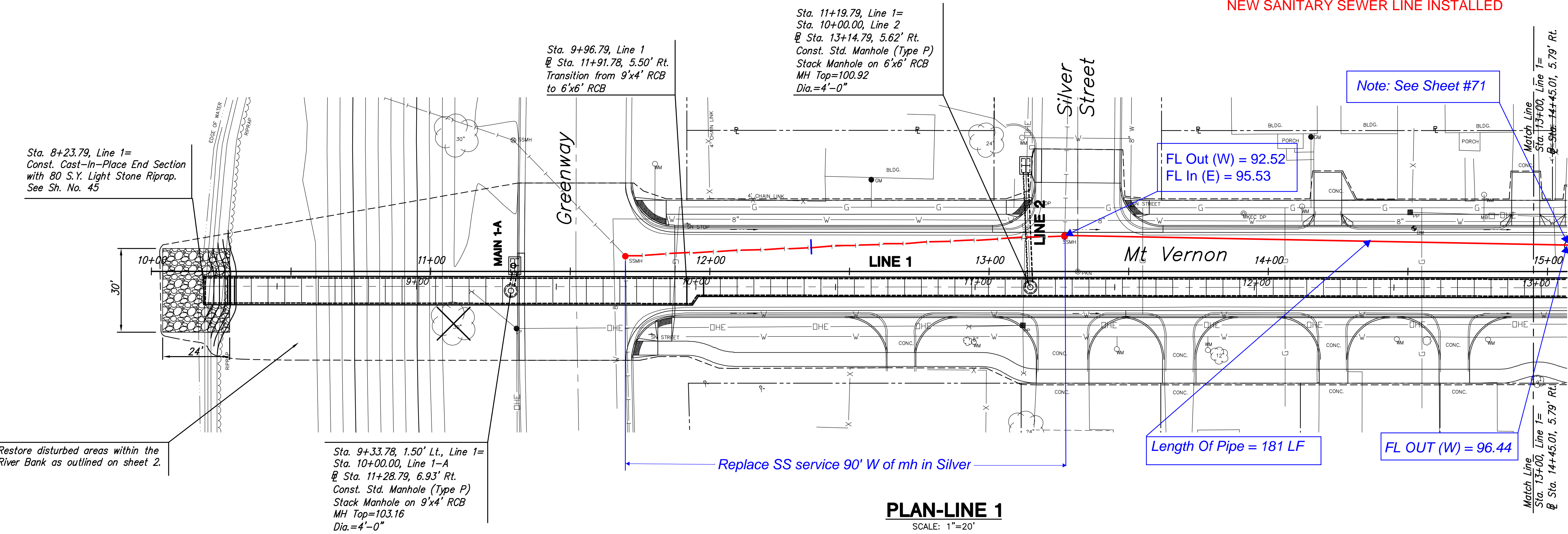
**Storm Line 1
Sta. 8+23.79
to
Sta. 13+00**
SHEET TITLE 472-84289
448-90385
468-84514
PROJECT NUMBER

DESIGN BY JRA
DRAWN BY JSB
CHECKED BY JRA

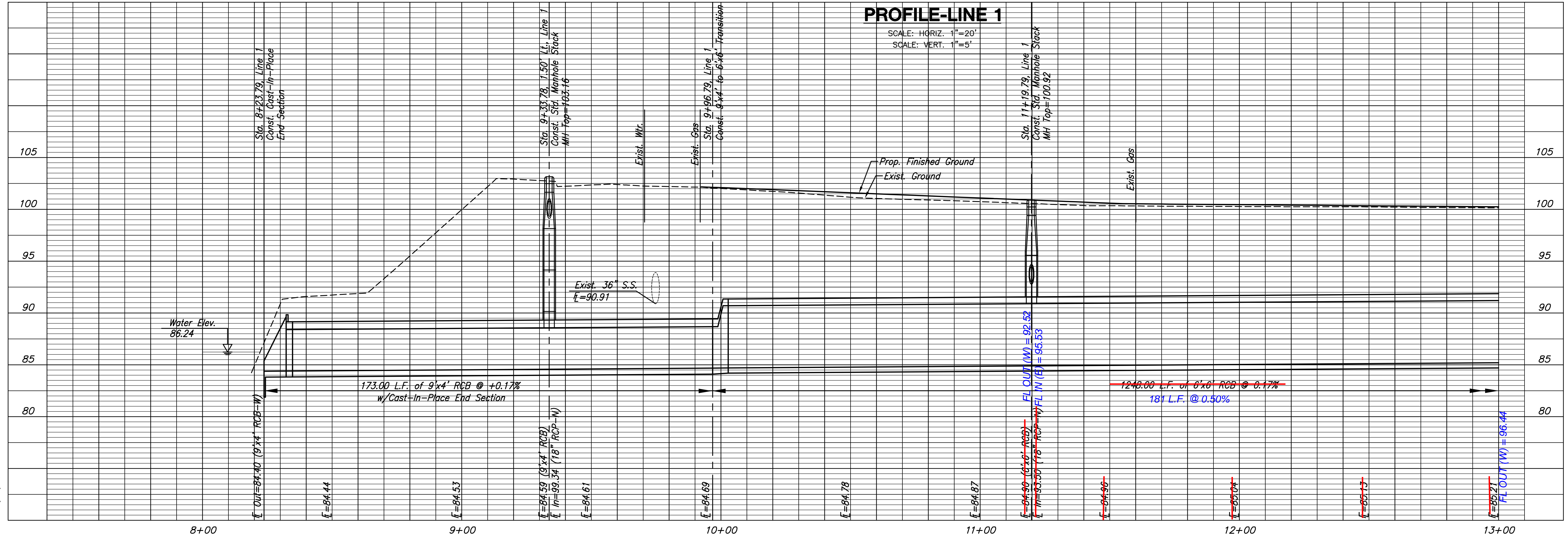
ISSUED May 27, 2008
REVISED

SHEET NO.
26 of 120

NEW SANITARY SEWER LINE INSTALLED



PLAN-LINE 1
SCALE: 1"=20'



PROFILE-LINE 1
SCALE: HORIZ. 1"=20'
SCALE: VERT. 1"=5'

Sta. 8+23.79, Line 1=
Const. Cast-In-Place End Section
with 80 S.Y. Light Stone Riprap.
See Sh. No. 45

Sta. 9+96.79, Line 1
@ Sta. 11+91.78, 5.50' Rt.
Transition from 9'x4' RCB
to 6'x6' RCB

Sta. 11+19.79, Line 1=
Sta. 10+00.00, Line 2
@ Sta. 13+14.79, 5.62' Rt.
Const. Std. Manhole (Type P)
Stack Manhole on 6'x6' RCB
MH Top=100.92
Dia.=4'-0"

Note: See Sheet #71

FL Out (W) = 92.52
FL In (E) = 95.53

Length Of Pipe = 181 LF

FL OUT (W) = 96.44

Match Line
Sta. 13+00, Line 1=
@ Sta. 14+45.01, 5.79' Rt.

Restore disturbed areas within the
River Bank as outlined on sheet 2.

Sta. 9+33.78, 1.50' Lt., Line 1=
Sta. 10+00.00, Line 1-A
@ Sta. 11+28.79, 6.93' Rt.
Const. Std. Manhole (Type P)
Stack Manhole on 9'x4' RCB
MH Top=103.16
Dia.=4'-0"

Replace SS service 90' W of mh in Silver

PLOTTED: Tuesday, May 27, 2008 @ 04:31PM

J:\CIVIL\05620\DWG\SWS\05620-01.DWG