

PLAN	CHECKED	CHECKED	BY	DATE

PROFILE	CHECKED	CHECKED	BY	DATE

Drawn: 05-12-2008 11:36:56 AM by CSI  
 Plot Scale: 1:20 05-12-2008 2:25:13 PM by ROBERT J. WISBY  
 05/2008/08070/001/08070-C-001-SSPP01

N: 50,289.1448, E: 49,661.2867  
 Sta. 0+00.0 \*  
 Construct MH 1 over existing 15" pipe.  
 Remove top half of 15" pipe thru MH.  
 Standard MH \*\*  
 Shape invert to provide smooth flow.

Install 1- 8" Stub and Plug

CAUTION !!!  
 36" RCP Storm Water Sewer

CAUTION !!!  
 Prop. 15" RCP Storm Water Sewer (by others)

N: 50,411.1348, E: 49,659.7311  
 Sta. +22.0 1+16.0  
 Const. MH 2  
 Standard MH \*\*

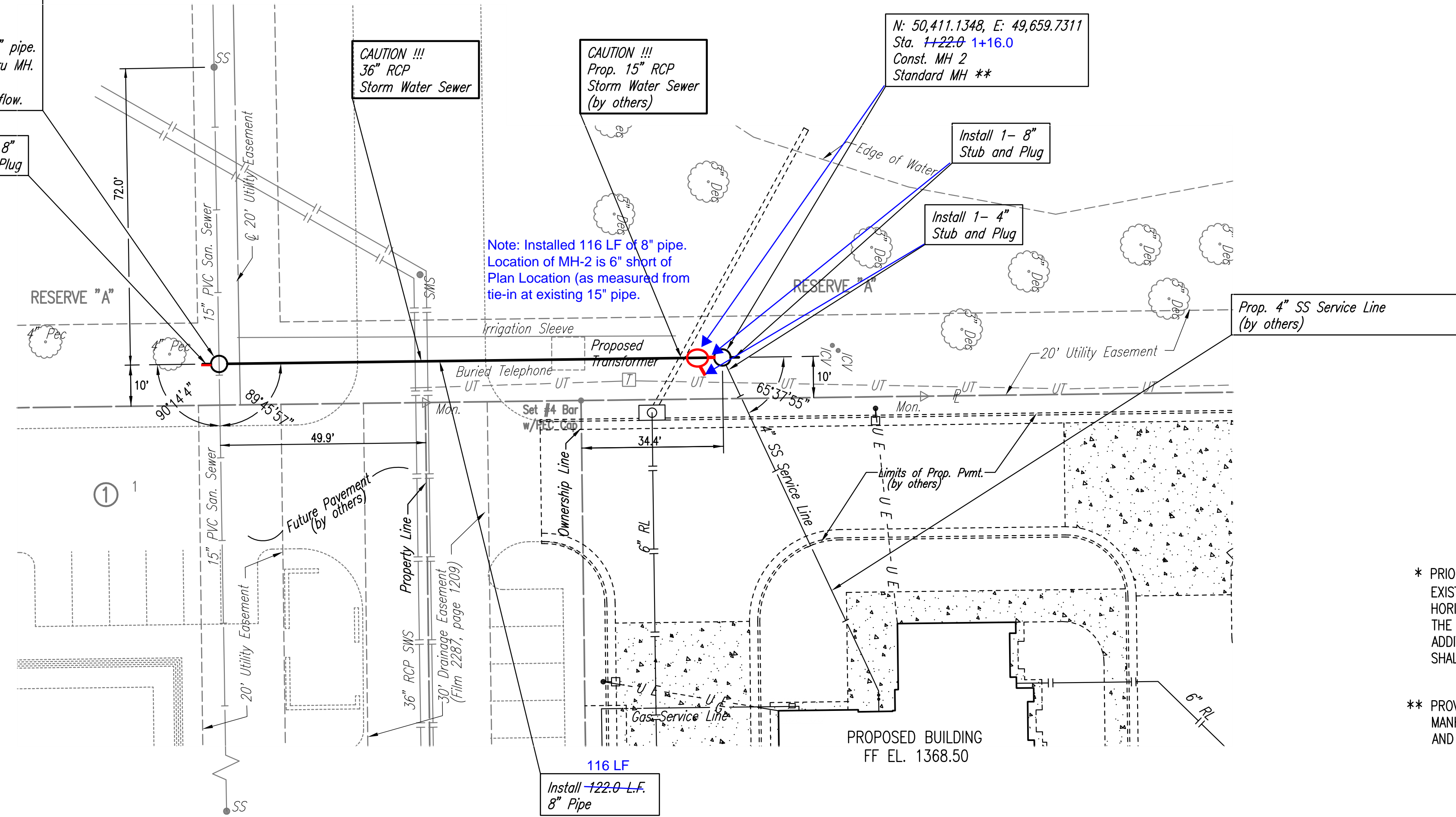
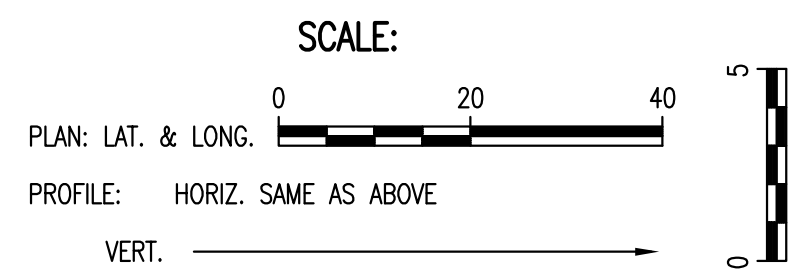
Install 1- 8" Stub and Plug

Install 1- 4" Stub and Plug

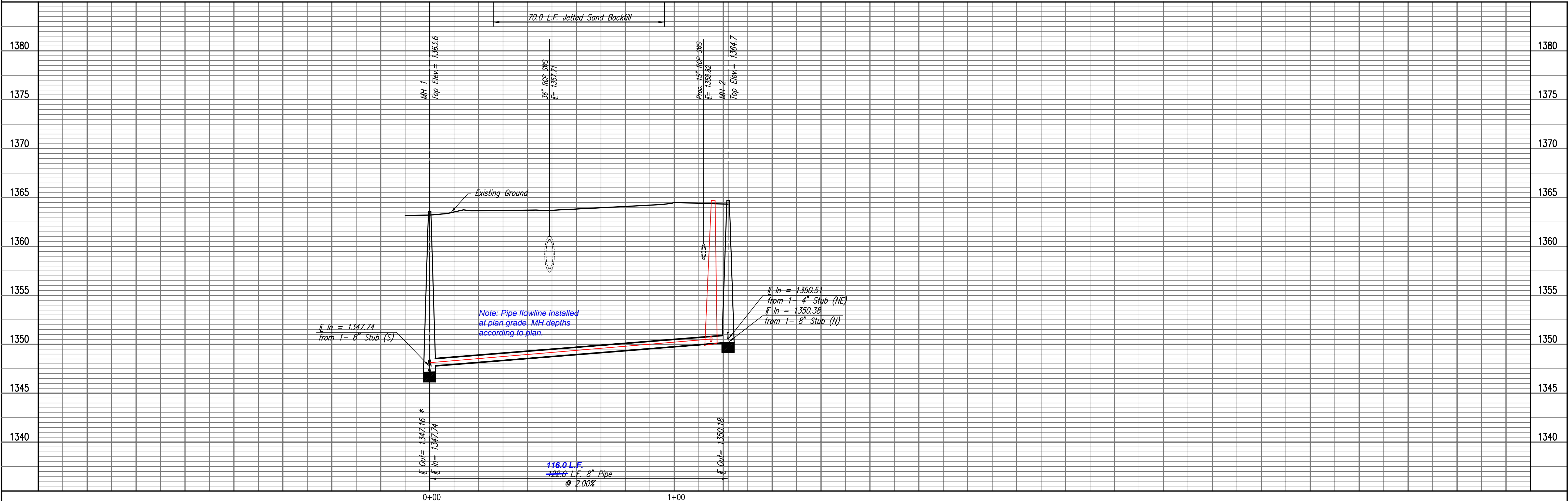
Note: Installed 116 LF of 8" pipe.  
 Location of MH-2 is 6" short of Plan Location (as measured from tie-in at existing 15" pipe).

\* PRIOR TO BEGINNING CONSTRUCTION, THE CONTRACTOR SHALL EXCAVATE THE EXISTING 15" PVC PIPE AT SANITARY SEWER STATION 0+00.00 TO VERIFY ITS HORIZONTAL AND VERTICAL LOCATION. THE PIPE LOCATION SHALL BE REPORTED TO THE ENGINEER SO THAT ANY NECESSARY PLAN MODIFICATIONS CAN BE MADE. ANY ADDITIONAL LABOR OR MATERIALS NECESSARY TO COMPLETE THE CONNECTION SHALL BE CONSIDERED SUBSIDIARY TO THE PROJECT.

\*\* PROVIDE 2-6" CONCRETE ADJUSTMENT RINGS TO BE INSTALLED WITH EACH MANHOLE FOR FUTURE ADJUSTMENT. CONTRACTOR SHALL CONTACT ENGINEER AND VERIFY MANHOLE TOP ELEVATIONS BEFORE BEGINNING WORK.



SANITARY SEWER LINE NO. 1



LATERAL 11, MAIN 26  
 OF THE WAR INDUSTRIES SEWER  
 LINE NO. 1

JAMES L. ARMOUR, P.E. - CITY ENGINEER  
 CITY OF WICHITA PROJECT NO. 468-84509

Professional Engineering Consultants, P.A.  
 603 S. TOPICKA AVENUE, WICHITA, KANSAS 67202  
 316-262-2691 • FAX 316-262-3003

Job No. 35-08070-001-042  
 Date JANUARY 2008

Designed By MDK  
 Drawn By CSL

Sheet 2 of 8