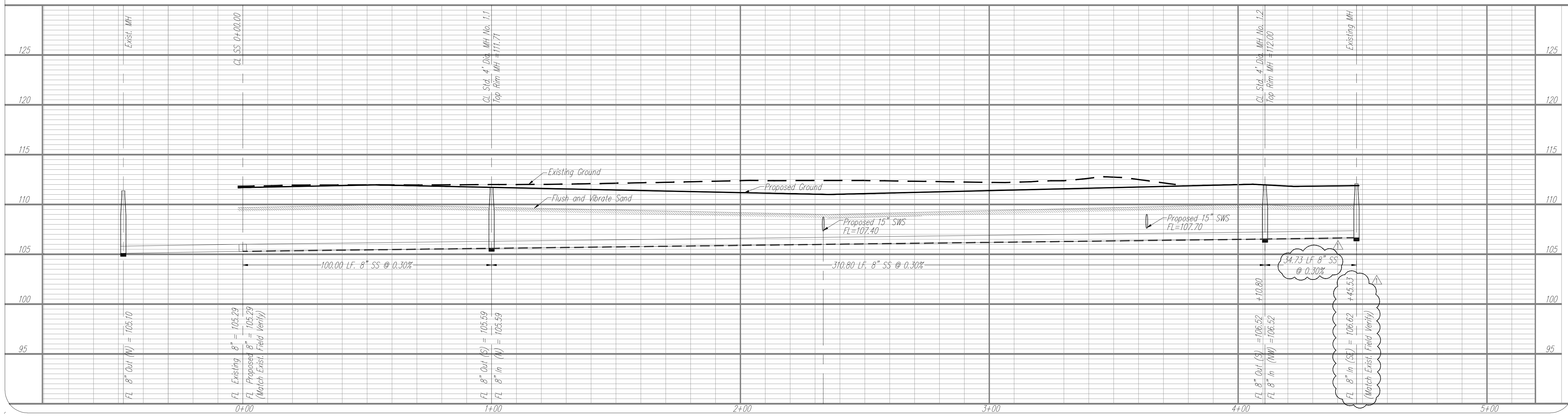


BUILT PER PLAN

- SPECIAL NOTES:**
1. The Contractor shall use Best Management Practices to control erosion and sediment discharge in all disturbed areas of construction. The Contractor shall provide all necessary materials, and maintain temporary erosion and sediment controls during and after construction.
 2. Unless otherwise noted all dimensions are measured center of structure to center of structure.
 3. The Contractor shall field verify horizontal and vertical locations of existing buried utility lines prior to construction and report any discrepancies to the Engineer.



YOUNG & ASSOCIATES, P.A.
 Civil Engineering • Surveying • Land Development
 100 S. Georgia, Derby, KS 67037
 Tele: (316) 788-2552, fax: (316) 788-4408, email: engineering@yanga.com
 Copyright 2002, by Young & Associates, P.A. All rights reserved. Prepared by the United States of America. This document, or parts thereof, or design concepts contained herein, are deemed confidential and proprietary information of Young & Associates, P.A. and may not be reproduced, stored in a retrieval system, or transmitted in any form or by any means, electronic, mechanical, photocopying, recording, or by any information storage and retrieval system, without the prior written permission of Young & Associates, P.A. The liability of the engineer or engineer-in-charge for errors and omissions is hereby assumed.

8" SANITARY SEWER - PLAN & PROFILE
 Street and Storm Sewer Improvements
 Mead Street, from Central to 3rd Street
 City of Wichita
 Sedgewick County, Kansas

scale: as noted
 drawn by: CAC
 checked by: CRY
 date: 9/9/08
 P/N: 07-246
 revisions:
 1/6/09