

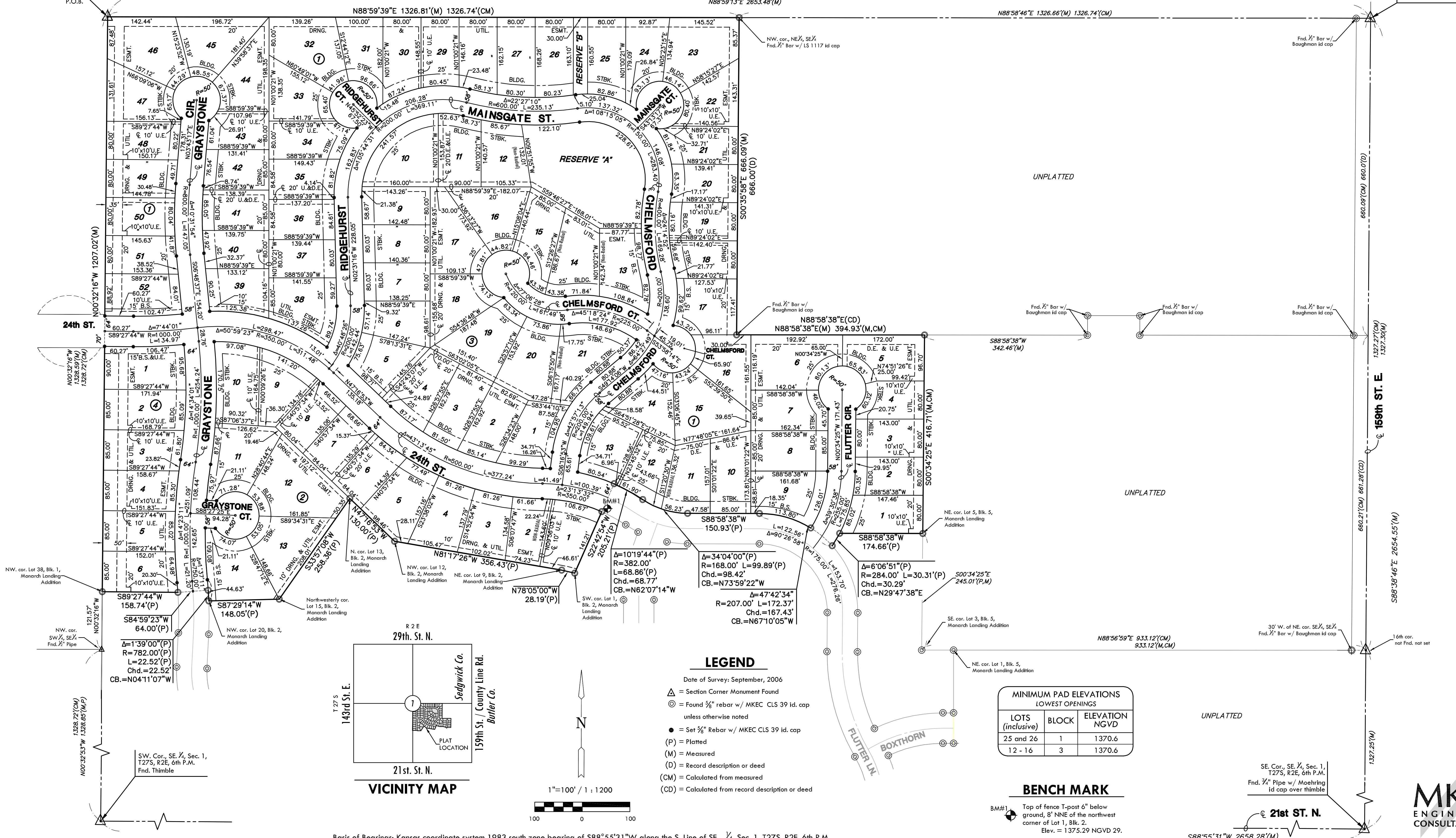
FINAL PLAT

MONARCH LANDING SECOND ADDITION

AN ADDITION TO WICHITA, SEDGWICK COUNTY, KANSAS

NW. cor., SE 1/4, Sec. 1,
T27S, R2E, 6th P.M.
Fnd. 1/2" pipe
P.O.B.

NE. Cor., SE 1/4, Sec. 1,
T27S, R2E, 6th P.M.
Fnd. Stone



NW. cor. Lot 38, Blk. 1,
Monarch Landing
Addition

NW. cor. Lot 12,
Blk. 2, Monarch
Landing Addition

NE. cor. Lot 9, Blk. 2,
Monarch Landing
Addition

SE. cor. Lot 3, Blk. 5,
Monarch Landing
Addition

NE. cor. Lot 1, Blk. 5,
Monarch Landing
Addition

30' W. of NE. cor. SE 1/4,
SE 1/4 Bar w/
Baughman id cap

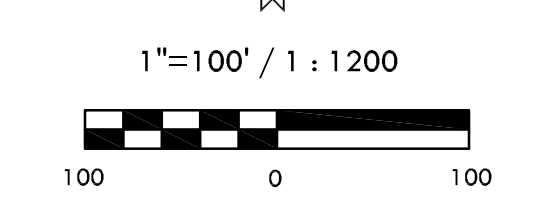
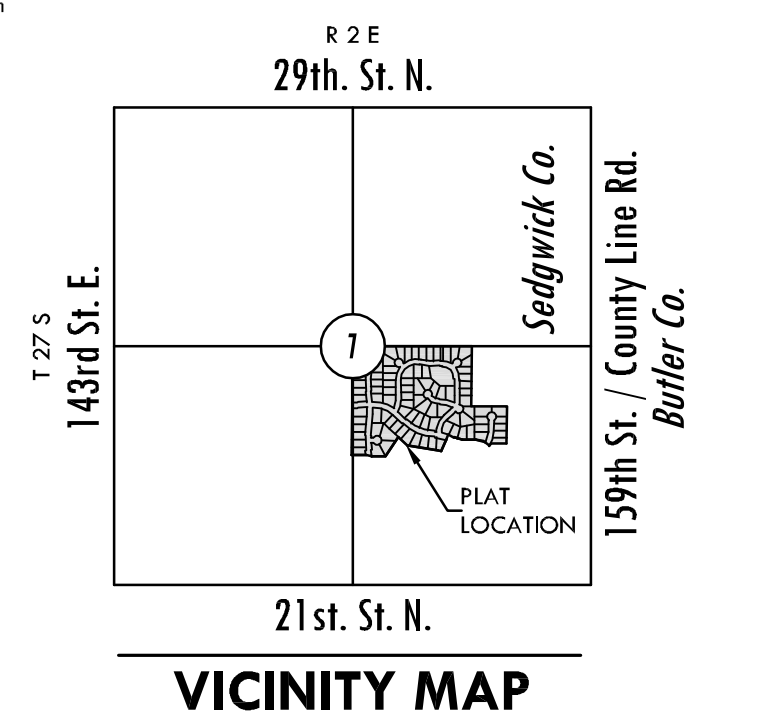
16th cor.
not Plat. not set

NW. cor. Lot 15, Blk. 2,
Monarch Landing
Addition

NW. cor. Lot 20, Blk. 2,
Monarch Landing
Addition

SW. Cor., SE 1/4, Sec. 1,
T27S, R2E, 6th P.M.
Fnd. Thimble

SE. Cor., SE 1/4, Sec. 1,
T27S, R2E, 6th P.M.
Fnd. 3/4" Pipe w/
Moehring
id cap over thimble



Basis of Bearings: Kansas coordinate system 1983 south zone bearing of S88°55'31"W along the S. Line of SE 1/4, Sec. 1, T27S, R2E, 6th P.M.

- LEGEND**
- Date of Survey: September, 2006
 - △ = Section Corner Monument Found
 - ⊙ = Found 3/8" rebar w/ MKEC CLS 39 id. cap unless otherwise noted
 - = Set 3/8" Rebar w/ MKEC CLS 39 id. cap
 - (P) = Platted
 - (M) = Measured
 - (D) = Record description or deed
 - (CM) = Calculated from measured
 - (CD) = Calculated from record description or deed

MINIMUM PAD ELEVATIONS LOWEST OPENINGS		
LOTS (inclusive)	BLOCK	ELEVATION NGVD
25 and 26	1	1370.6
12 - 16	3	1370.6

BENCH MARK

BM#1 Top of fence T-post 6" below ground, 8' NNE of the northwest corner of Lot 1, Blk. 2.
Elev. = 1375.29 NGVD 29.

MKEC
ENGINEERING
CONSULTANTS, INC.

411 N. WEBB ROAD
WICHITA, KS. 67206
316-684-9600