

SANITARY SEWER EXTENSION LATERAL 2, MAIN 23, SOUTHWEST INTERCEPTOR EMERALD BAY ESTATES SECOND ADDITION

PROJECT NO. 468-84209
OCA # 744309

GENERAL NOTES

Contractor will be required to provide a minimum advance notice of seventy-two (72) hours to utility companies prior to starting any excavation as follows:

Kansas One-Call 687-2470

The Contractor must notify the following in case of an emergency:

Cox Communications	262-0661
Kansas Gas Service	383-8600
Westor	383-8600
Aquila	1-800-303-0357
SBC	1-800-286-8313
City of Wichita Water Department	262-6000
City of Wichita Sewer Maintenance	262-6000

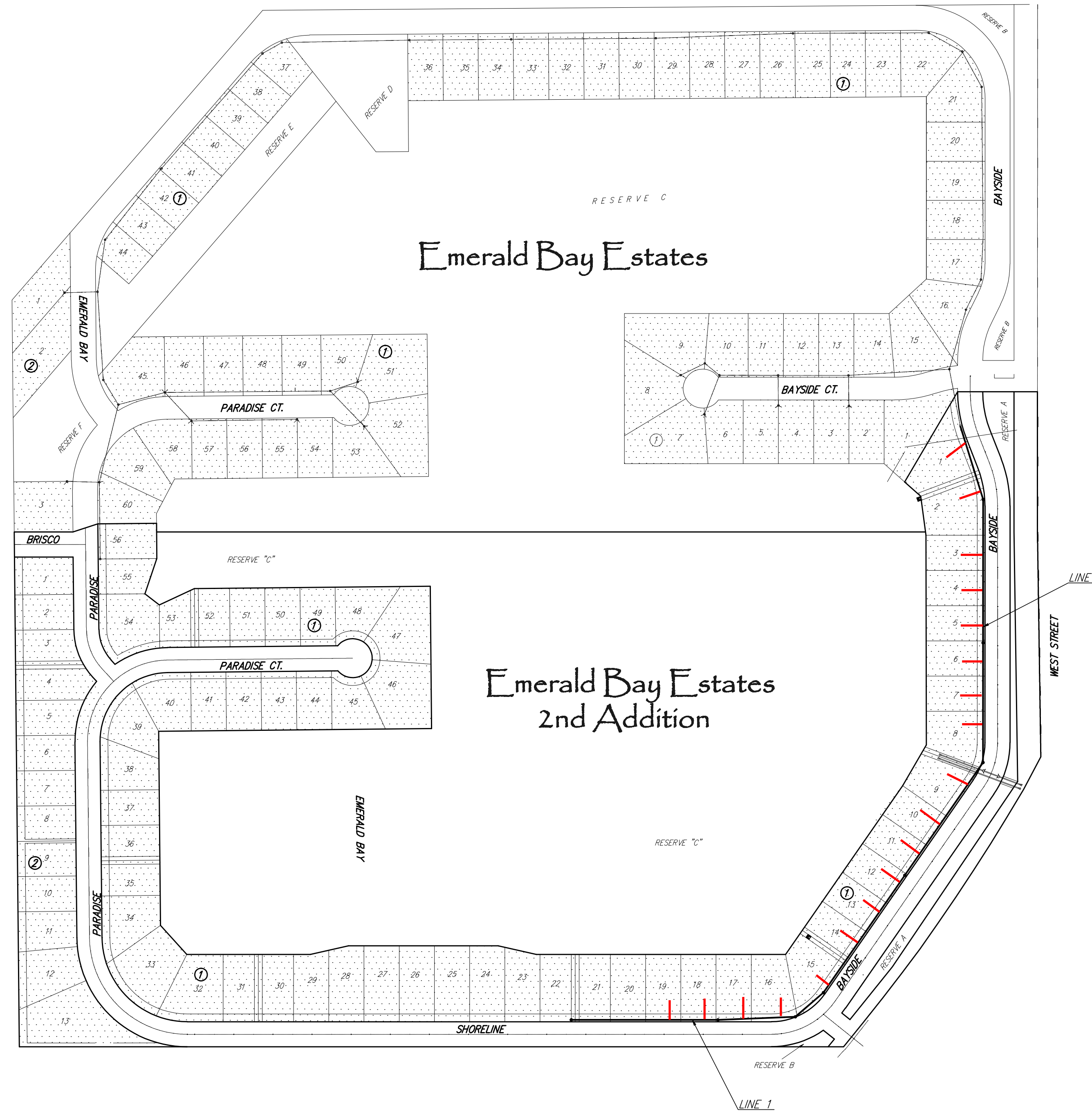
Underground utility service lines and overhead utility pole lines are to be adjusted as necessary by others prior to construction unless the plans specifically call for their adjustment by the Contractor or unless the plans specifically identify a utility to be adjusted by its owner during construction. Existing utilities and their location, as shown on the plans, represent the best information obtainable for design. Location information has been obtained from the various utility companies and is either from company record drawings or company-provided field locations. The Contractor will be required to work around existing utilities within the right-of-way which do not conflict with proposed construction.

Rubble from the removal of miscellaneous structures and excess excavation which is to be wasted shall be disposed of on sites to be provided by the Contractor. These sites shall be approved by the Engineer as to suitability, appearance and site location. Locations that, in the opinion of the Engineer, will leave an unsightly appearance will not be approved.

All disposal sites must be approved by the Kansas Department of Health and Environment. Material either stockpiled or disposed of in a flood plain would require a Kansas State Board of Agriculture permit. Any material dumped in waters of the United States or wetlands is subject to U.S. Corps permitting regulations. Any material buried or stockpiled beyond approved of Engineers construction limits would require additional archeological investigations unless buried in a previously approved borrow location.

The Contractor shall give all property owners and/or tenants of developed property directly abutting the construction of this project a minimum of ten (10) days advance notice prior to start of construction.

The Contractor shall be responsible for preserving property irons. The Contractor will be required to re-establish any property irons which are damaged or destroyed by his construction operations. Such irons shall be re-established by a licensed land surveyor in accordance with state laws.



BENCH MARKS

- BENCHMARK #1 COW DISK AT NORTHWEST CORNER OF INTERSECTION OF 21ST AND HOOVER, 48.50' WEST OF CENTERLINE OF HOOVER AND 28.0' NORTH OF CENTERLINE OF 21ST STREET.
ELEVATION: 1326.94 (NAVD 88)
- BENCHMARK #2 COW DISK AT SOUTHWEST CORNER OF INTERSECTION OF 29TH AND HOOVER, 48.50' WEST OF CENTERLINE OF HOOVER AND 26.5' SOUTH OF SECTIONLINE.
ELEVATION: 1330.63 (NAVD 88)

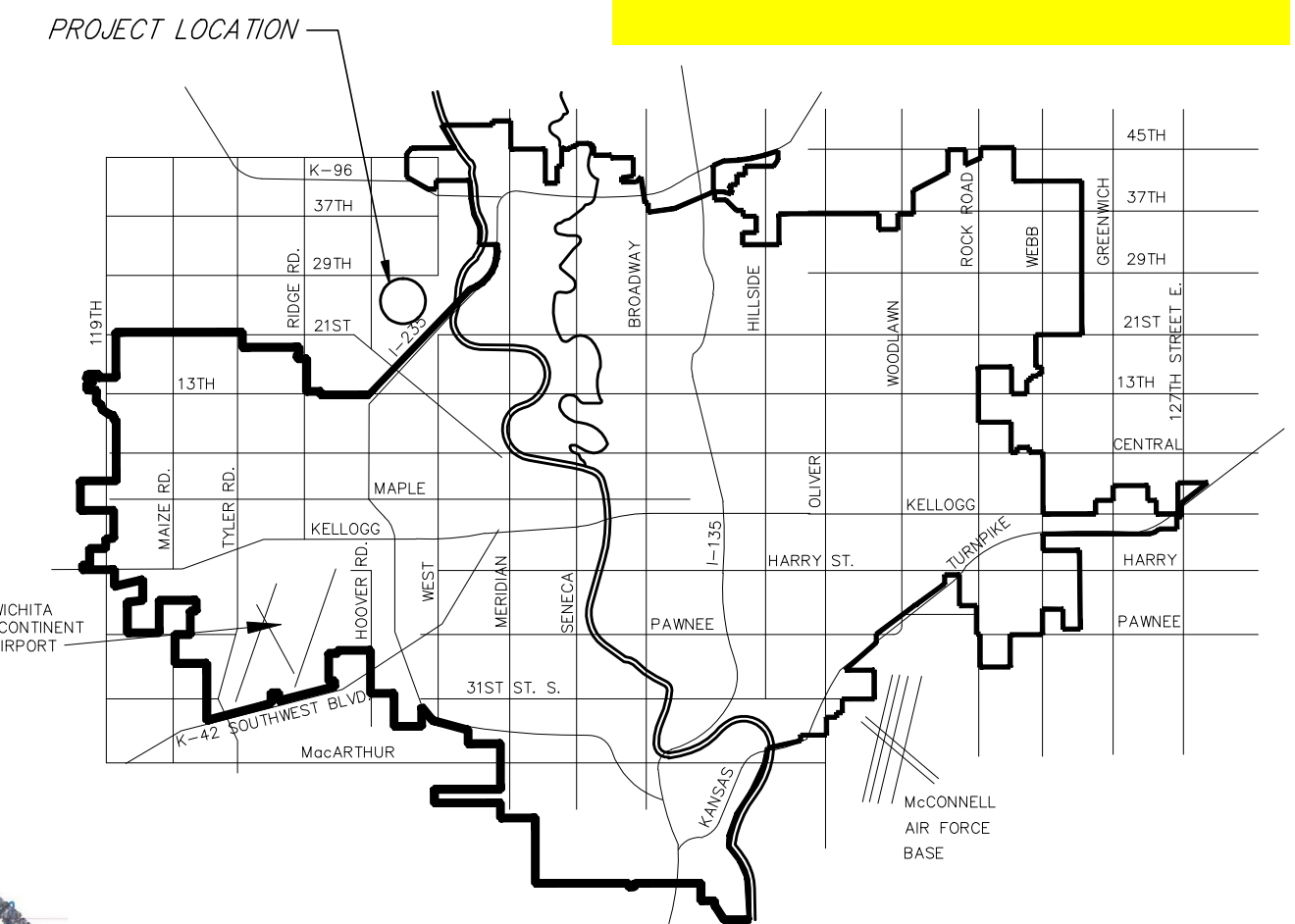
INDEX OF SHEETS

1. TITLE SHEET
2. TYPE 'P' MANHOLE DETAIL
3. MANHOLE RING & COVER DETAIL
4. RISER DETAILS
- 5-7. LINE 1 PLAN / PROFILE
9. EROSION CONTROL PLAN
- 9-13. EROSION CONTROL DETAILS
14. KEY MAP
- 15-16. FINAL PLAT

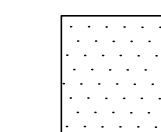


Scale: 1" = 200'

NOWAK CONSTRUCTION - CONTRACTOR
S. CODY - CITY OF WICHITA, INSPECTOR
AS-BUILT
RISERS
RELEASE DATE : 01/22/2010
PDF: APRosas 3/16/2010

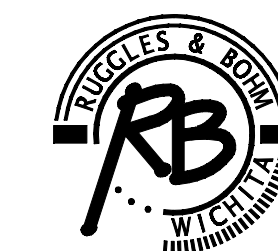


VICINITY MAP



BENEFIT DISTRICT

IMPROVEMENT DISTRICT
CITY OF WICHITA, KANSAS
JAMES L. ARMOUR, P.E. - CITY ENGINEER



Ruggles & Bohm, P.A.
Engineering, Surveying, Land Planning
924 North Main (316) 264-8008
Wichita, Kansas 67203 (316) 264-4621 fax
www.rbkansas.com E-mail: info@rbkansas.com