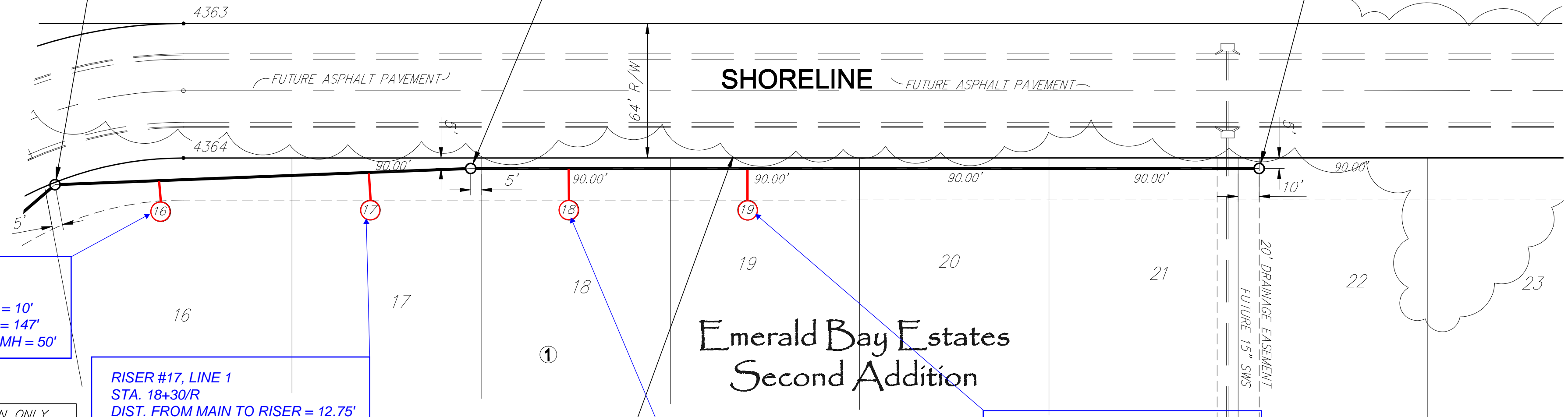
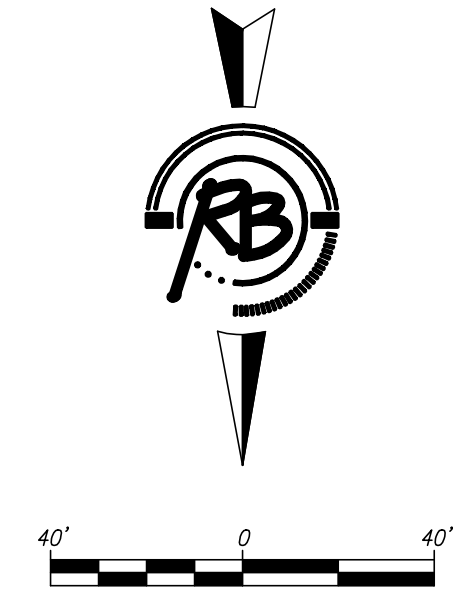


SS MH-6  
 N 21393.10 E 21970.73  
 STA. 16+80.43, SS Line 1  
 CONSTRUCT STD. TYPE 'P' MH, D = 4.0'  
 TOP ELEV. 1326.00

SS MH-7  
 N 21385.39 E 21773.05  
 STA. 18+78.27, SS Line 1  
 CONSTRUCT STD. TYPE 'P' MH, D = 4.0'  
 TOP ELEV. 1326.70

SS MH-8  
 N 21385.37 E 21398.05  
 STA. 22+53.27, SS Line 1  
 CONSTRUCT STD. TYPE 'P' MH, D = 4.0'  
 TOP ELEV. 1324.90



RISER #16, LINE 1  
 STA. 17+30/R  
 DIST. FROM MAIN TO RISER = 10'  
 DIST. FROM UPSTREAM MH = 147'  
 DIST. FROM DOWNSTREAM MH = 50'

RISER #17, LINE 1  
 STA. 18+30/R  
 DIST. FROM MAIN TO RISER = 12.75'  
 DIST. FROM UPSTREAM MH = 48'  
 DIST. FROM DOWNSTREAM MH = 150'

RISER #18, LINE 1  
 STA. 19+25/R  
 DIST. FROM MAIN TO RISER = 15'  
 DIST. FROM UPSTREAM MH = 327'  
 DIST. FROM DOWNSTREAM MH = 46'

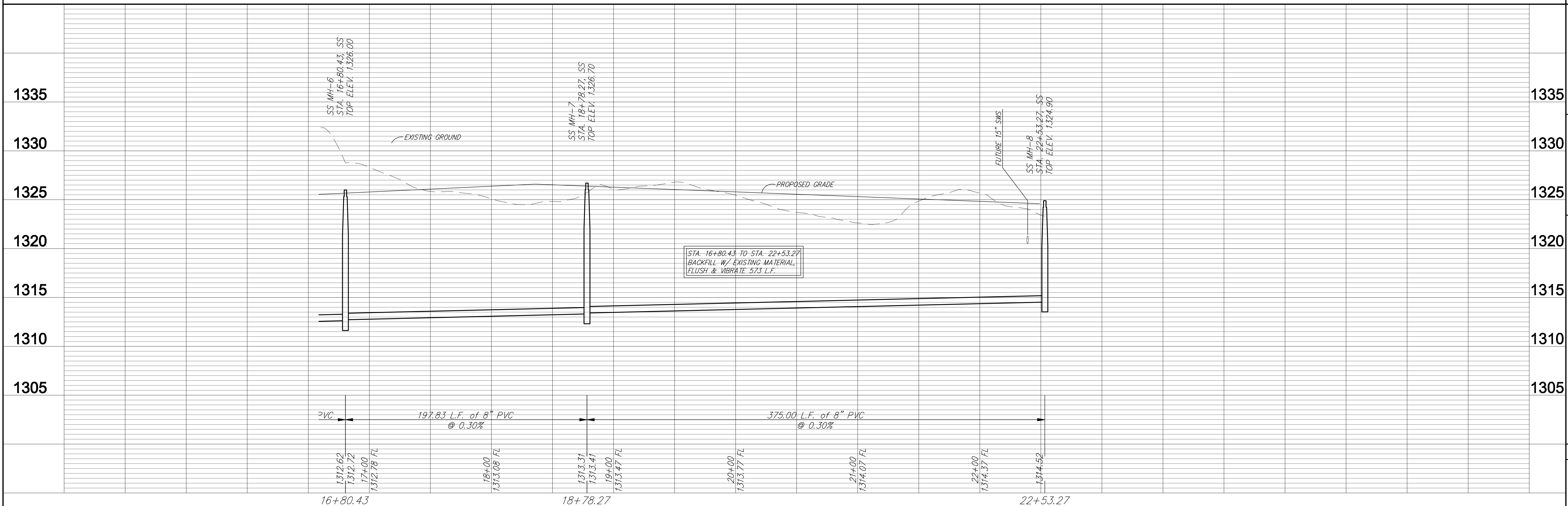
RISER #19, LINE 1  
 STA. 20+10/R  
 DIST. FROM MAIN TO RISER = 14.90'  
 DIST. FROM UPSTREAM MH = 243'  
 DIST. FROM DOWNSTREAM MH = 131'

REMOVE TREES AS NECESSARY FOR CONSTRUCTION. SUBSIDIARY TO BID ITEM FOR "SITE CLEARING AND RESTORATION".

SEWER SERVICE TABLE

NUMBER	TYPE	LOCATION			STATION \ DIRECTION	FOR INFORMATION ONLY	
		LOT NO.	BLOCK NO.	LINE NO.		APPROXIMATE LENGTH 4" PIPE	
16	8" X 4" Tee Riser	16	1	1	17+30/R	VERTICAL	HORIZONTAL
17	8" X 4" Tee Riser	17	1	1	18+30/R	9'	10'
18	8" X 4" Tee Riser	18	1	1	19+25/R	9'	+3'
19	8" X 4" Tee Riser	19	1	1	20+10/R	11'	15'
						8'	+5'

NOTE: Vertical Riser Pipe shall be extended to 2' minimum above ground water elevation and 4' maximum below proposed ground elevation.



Ruggless & Bohling P.A.  
 Engineering Surveying Land Planning  
 1000 W. 17th St., Suite 100  
 Wichita, Kansas 67202  
 Phone: 316-261-1111  
 Fax: 316-261-1112  
 Email: info@ruggless.com

PROJECT NUMBER: 466-84209  
 DRAWING FILE: 466-84209-01  
 ENGINEERING BASE: [05 Line 1]

SANITARY SEWER IMPROVEMENTS  
 LINE 1  
 WICHITA, KANSAS

DATE: Sept. 11, 2009  
 DRAWN BY: AML  
 CHECKED BY: AML  
 REVISIONS:

3367E  
 7  
 16