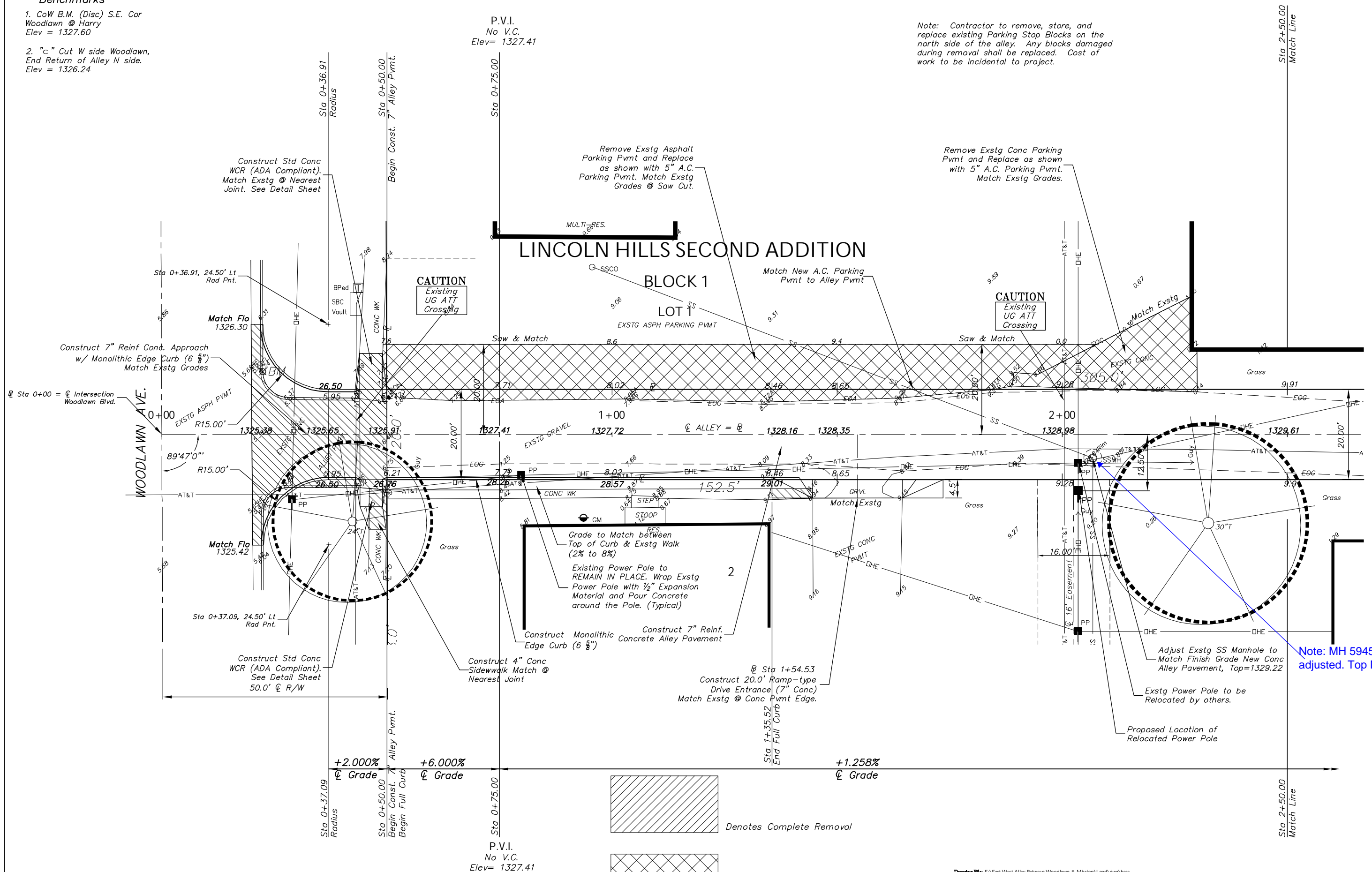


Benchmarks

1. CoW B.M. (Disc) S.E. Cor Woodlawn @ Harry
Elev = 1327.60
2. "c" Cut W side Woodlawn, End Return of Alley N side.
Elev = 1326.24

SCALE: 1" = 10'



Note: Contractor to remove, store, and replace existing Parking Stop Blocks on the north side of the alley. Any blocks damaged during removal shall be replaced. Cost of work to be incidental to project.

CAUTION
Existing UG ATT Crossing

CAUTION
Existing UG ATT Crossing

Note: MH 5945-042 adjusted. Top MH = 1329.22

Denotes Complete Removal

Denotes Complete Removal & Replacement w/ 5" A.C. Parking Lot Pavement

Drawing File: E:\East West Alley Between Woodlawn & Mission\Land\dwg\base		Project No: 0705E824 CAPITAL IMPROVEMENT PROJECT	
Design: KK Drawn: STAFF Appointed: JFB Scale: 1:10	7" CONCRETE ALLEY PAVEMENT Between Woodlawn and Mission S of Harry NW 1/4 Sec 31 T27S R2E - Lincoln Hills Second Addition		
		Baughman Company, P.A. 315 Ellis St. Wichita, KS 67211 P 3162627271 F 3162620149 ENGINEERING SURVEYING PLANNING LANDSCAPE ARCHITECTURE	
AUGUST, 2007			SHEET 2 OF 7