

**MT VERNON STREET AND
DRAINAGE IMPROVEMENTS
FROM GREENWAY TO BROADWAY**

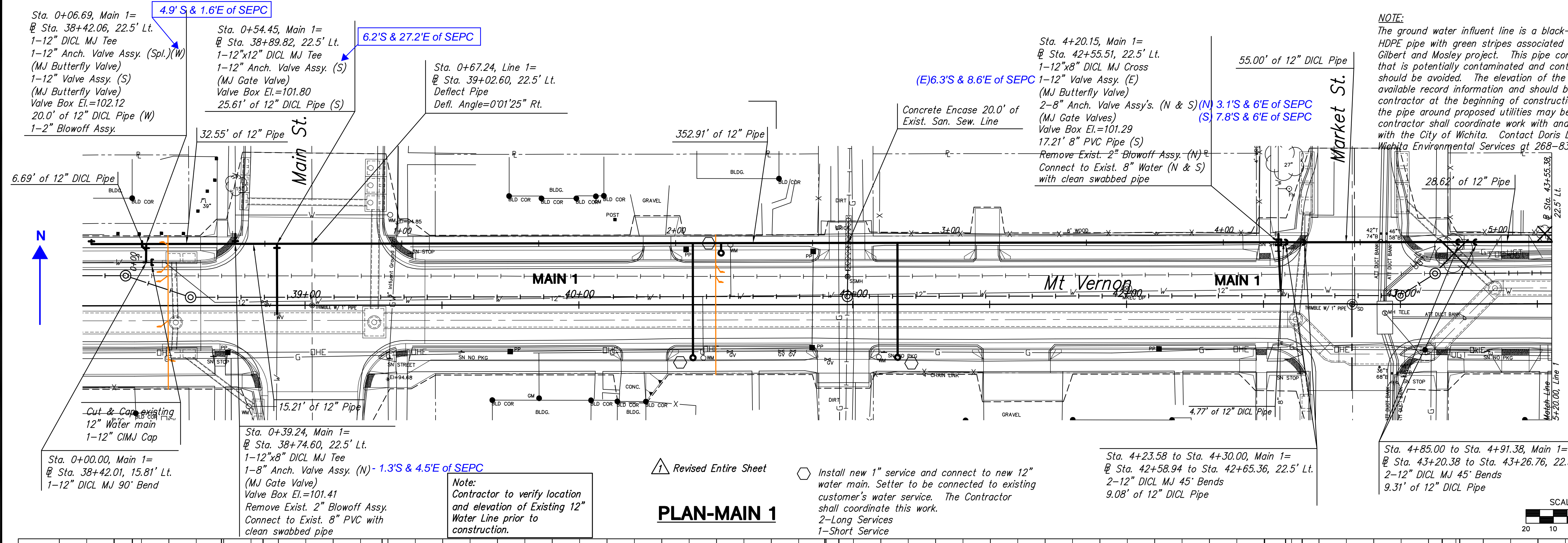
**Water Main 1
Sta. 0+00
to
Sta. 5+20**
SHEET TITLE 472-84289
448-90385
468-84514
PROJECT NUMBER

DESIGN BY JRA
DRAWN BY JSB
CHECKED BY JRA

ISSUED July 22, 2008
REVISED July 22, 2008

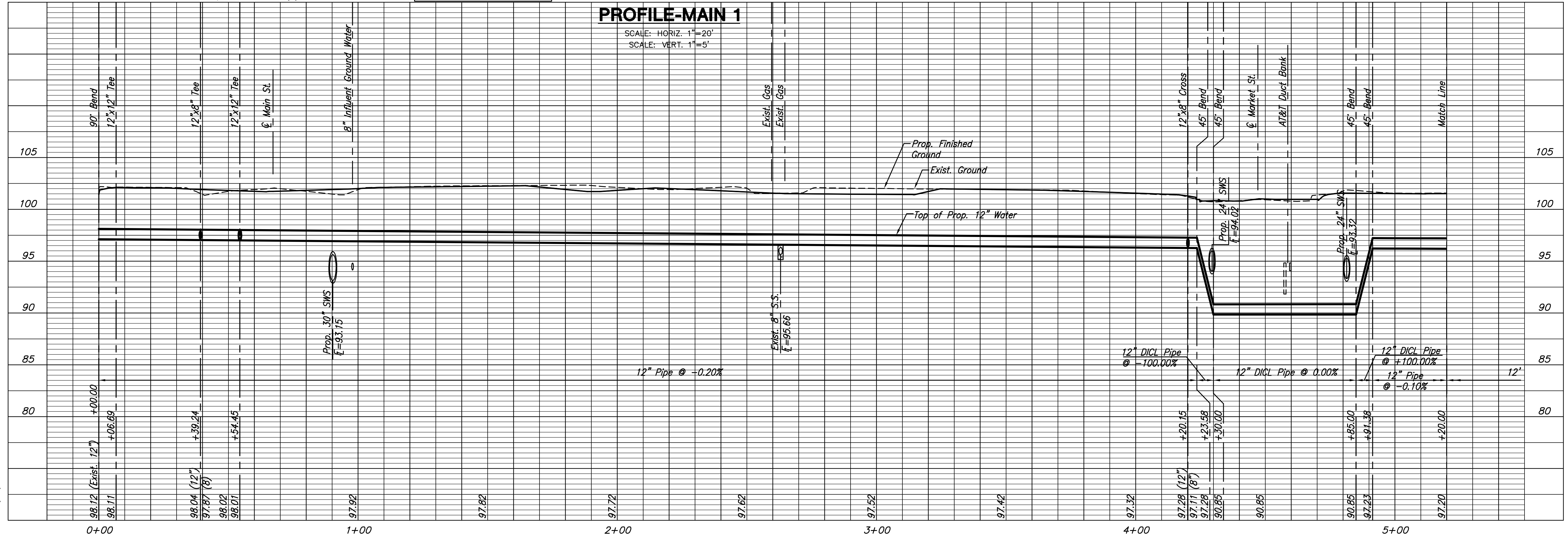
SHEET NO.
62 of 120

NOTE:
The ground water influent line is a black-colored 8" SDR-11 HDPE pipe with green stripes associated with the City's Gilbert and Mosley project. This pipe contains ground water that is potentially contaminated and contact with the water should be avoided. The elevation of the pipe is based off of available record information and should be confirmed by the contractor at the beginning of construction. Relocation of the pipe around proposed utilities may be required. The contractor shall coordinate work with and around the pipe with the City of Wichita. Contact Doris Leslie with City of Wichita Environmental Services at 268-8359.



PLAN-MAIN 1

PROFILE-MAIN 1



PLOTTED: Tuesday, July 22, 2008 @ 03:50PM

J:\CIVIL\05620\DWG\WTR\05620-C1.DWG