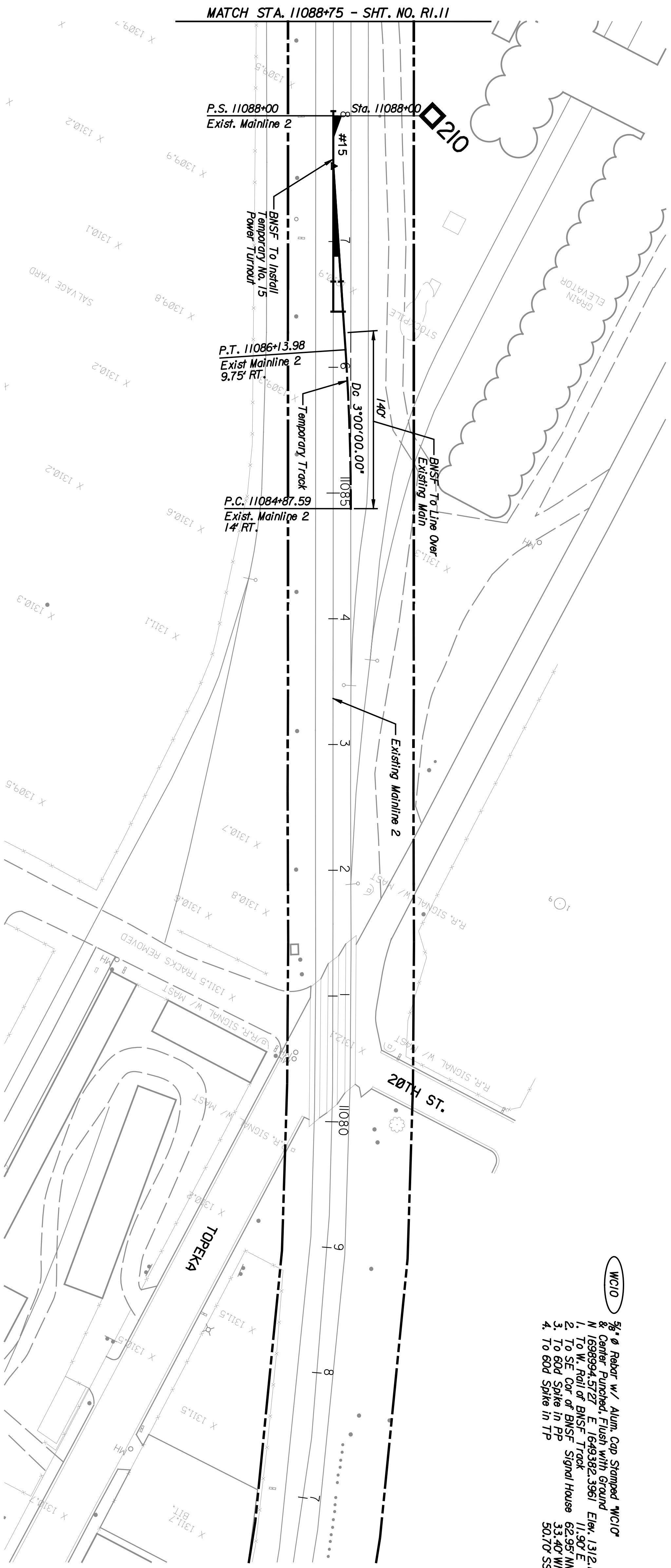


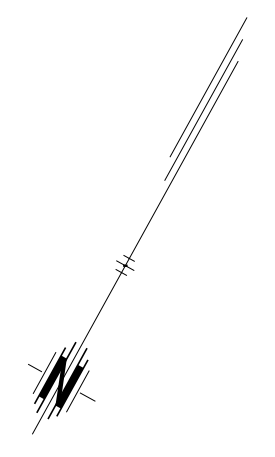
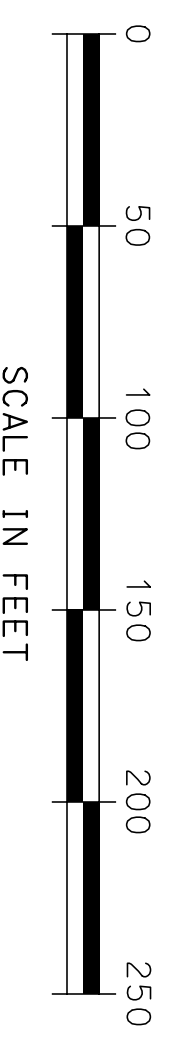
	BY	DATE

BNSF TRACK WORK ONLY



- WC10**
- 5/8" Ø Rebar w/ Alum. Cap Stamped WC10
 - & Center Punched, Flush with Ground
 - N. 1639994.5727 E. 1649382.3961 Elev. 1312.17
 - 1. To W. Rail of BNSF Track 11.90' E
 - 2. To SE Cor of BNSF Signal House 62.95' NW
 - 3. To 60d Spike in PP 33.40' WW
 - 4. To 60d Spike in TP 50.70' SSW

- WC12**
- 5/8" Ø Rebar w/ Alum. Cap Stamped WC12
 - & Center Punched, Flush with Ground
 - N. 1639933.7020 E. 1650080.8808 Elev. 1310.23
 - 1. To Back of S. Curb of 21st St. 6.86' N
 - 2. To Base of Chain Link Fence Post 6.86' E
 - 3. To Face of PP 35.82' SSE
 - 4. To Center of Curb Inlet 32.57' WW



STATE	PROJECT NO.	YEAR	SHEET NO.	TOTAL SHEETS
KANSAS	472-84071	2005	RI10	

ENTB
 ARCHITECTS ENGINEERS PLANNERS

This sheet designed by:

SHEET NO.		SCALE		APPD.	
DESIGNED BY	REP	DETAILED	JDS	QUANTITIES	TRACED
DESIGN CR.	RSB	DETAIL CR.	REP	QUANT.	TRACE CR.
CITY OF WICHITA					
WICHITA CENTRAL CORRIDOR					
PHASE I - TRACK WORK					
PLAN					
STA. 11076+75 TO STA. 11088+75					
NO.	DATE	REVISIONS	BY	APPD.	
3					
2					
1					