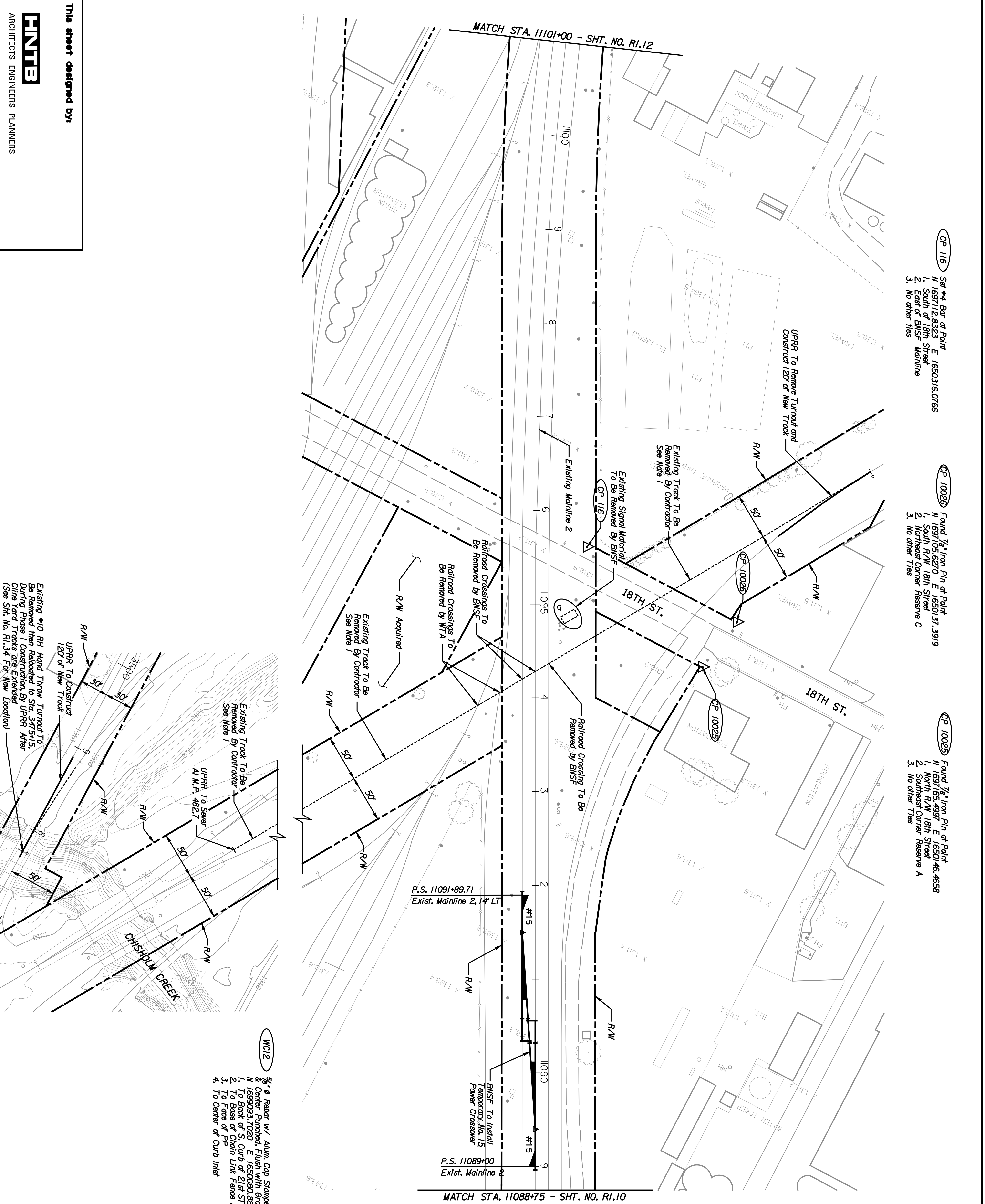


	BY	DATE



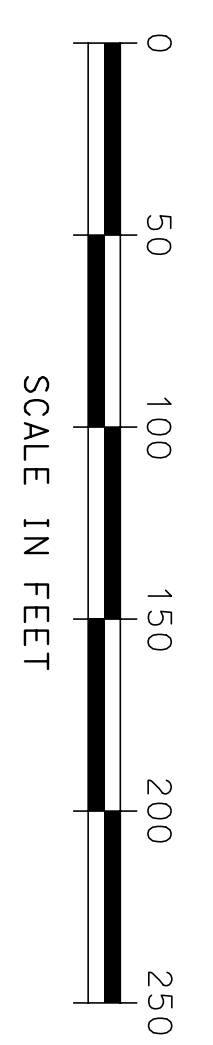
CP 116 Set #4 Bar at Point
 N 1697112.8323 E 1650316.0766
 1. South of 18th Street
 2. East of BNSF Mainline
 3. No other Ties

CP 10026 Found 7/8" Iron Pin at Point
 N 1697055.6270 E 1650137.3919
 1. South R/W 18th Street
 2. Northeast Corner Reserve C
 3. No other Ties

CP 10025 Found 7/8" Iron Pin at Point
 N 1697165.4997 E 1650146.4658
 1. North R/W 18th Street
 2. Southeast Corner Reserve A
 3. No other Ties

Existing #10 RH Hand Throw Turnout To Be Removed Then Relocated to Sta. 34+57.15. During Phase I Construction, By UPRR After Close 1st Tracks are Extended (See Sit. No. RI.34 For New Location)

WC12 5/8" Ø Rebar w/ Alum. Cap Stamped WC12 & Center Punched. Finish with Ground Elev. 1310.23
 N 1699093.7020 E 1650080.8808
 1. To Back of S. Curb of 21st St.
 2. To Base of Chain Link Fence Post
 3. To Face of PP
 4. To Center of Curb Inlet
 32.67' WWV
 6.86' E
 35.82' SSE
 32.67' WWV



NOTES:
 1. 112# Rebar UPRR Main to be removed and stockpiled at a site within project limits, selected by UPRR.

ENTB
 ARCHITECTS ENGINEERS PLANNERS

This sheet designed by:

SHEET NO.	OF	SCALE	DATE	DESIGNED BY	CHKD BY	APPD.
1	1	DETAILED		RSB	REP	
2	1	DETAILED		RSB	REP	
3	1	DETAILED		RSB	REP	

CITY OF WICHITA
WICHITA CENTRAL CORRIDOR
PHASE I - TRACK WORK
PLAN
STA. 11088+75 TO STA. 11101+00

STATE	PROJECT NO.	YEAR	SHEET NO.	TOTAL SHEETS
KANSAS	472-84071	2005	RI11	