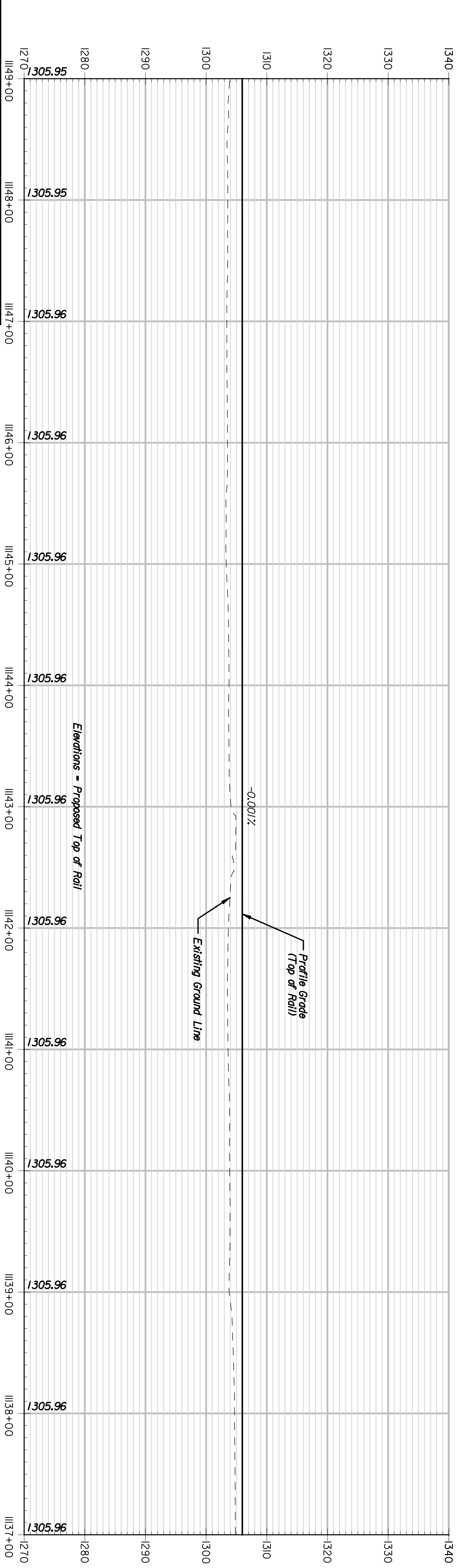


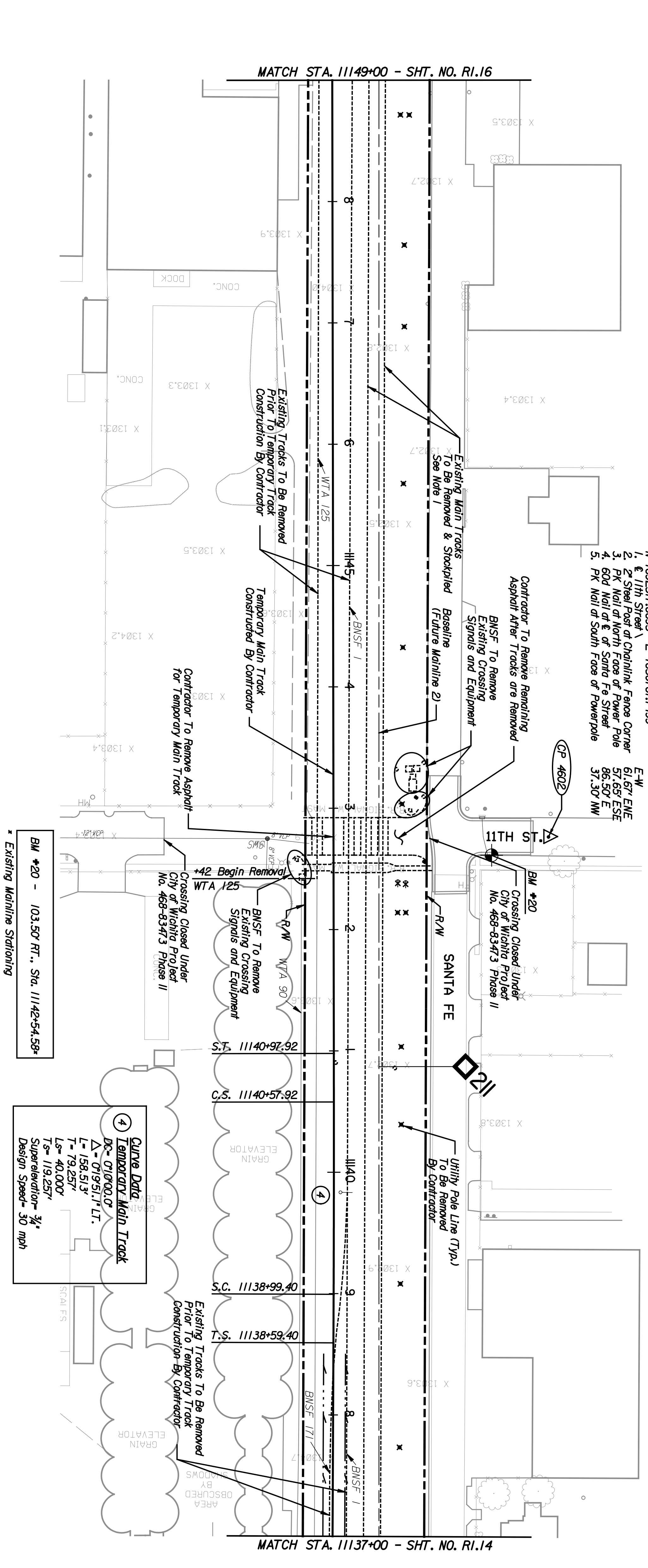
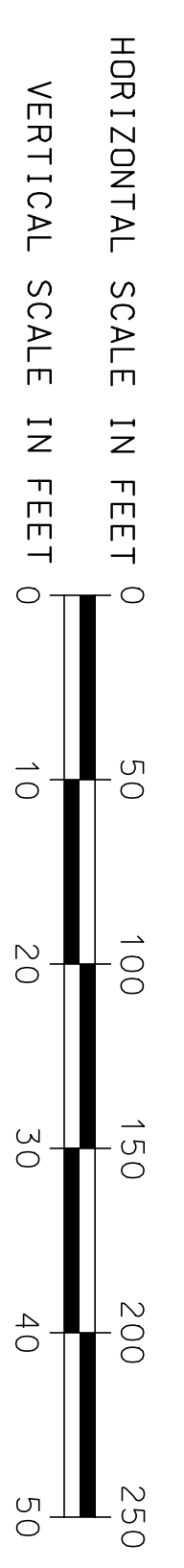
BY	DATE

CPNTE
 ARCHITECTS ENGINEERS PLANNERS

This sheet designed by:



TEMPORARY MAIN TRACK - PROFILE



BM #20 - 103.50' RT., Sta. 11142+54.58+
 * Existing Mainline Stationing

Curve Data
 Temporary Main Track
 DC = 01900.0'
 $\Delta = 01951.1^\circ$ LT.
 L = 158.513'
 T = 79.257'
 Ls = 40.000'
 Ts = 119.257'
 Superelevation = $\frac{3}{4}$ '
 Design Speed = 30 mph

CP 4602 Set PK Nail at Point
 N 1692517.86935 E 1650761.7499

1. 1" x 11th Street
2. 2" Steel Post at Chainlink Fence Corner
3. PK Nail at North Face of Power Pole
4. 60d Nail at E of Santa Fe Street
5. PK Nail at South Face of Powerpole

E-W
 61.67' ENE
 57.65' ESE
 86.50' E
 37.30' NW

CP 4602

BM #20

Crossing Closed Under
 City of Wichita Project
 No. 468-83473 Phase II

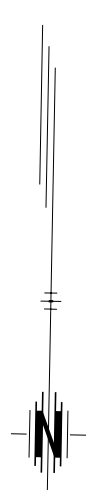
11TH ST

SANTA FE

Utility Pole Line (Twp.)
 To Be Removed
 By Contractor

NOTES:

1. Removal of Existing Main Tracks to be done by contractor after operations have switched to Temporary Main Track.
2. Existing RR Signal Equipment to be removed by BNSF.



STATE	PROJECT NO.	YEAR	SHEET NO.	TOTAL SHEETS
KANSAS	472-84071	2005	115	115

SHEET NO.	OF	SCALE	DATE	DESIGNED BY	CHKD BY	APPD BY
1	3	DETAILED				
2						
3						

CITY OF WICHITA
 WICHITA CENTRAL CORRIDOR
 PHASE I - TRACK WORK
 PLAN AND PROFILE
 STA. 1137+00 TO STA. 1149+00

NO.	DATE	REVISIONS	BY	APPD.

DESIGNED	CHKD	APPD	TRACED
RSB	RSB	RSB	RSB