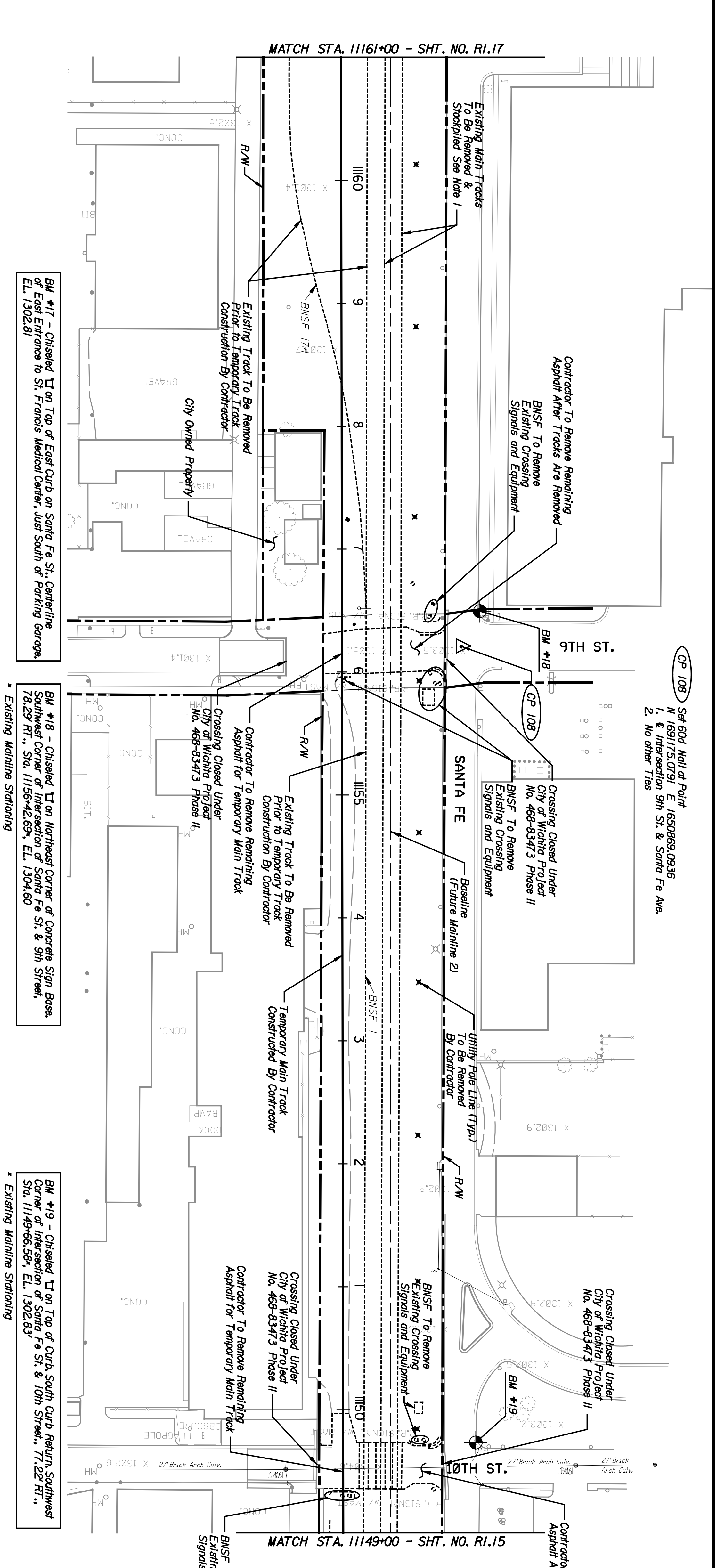


BY	DATE



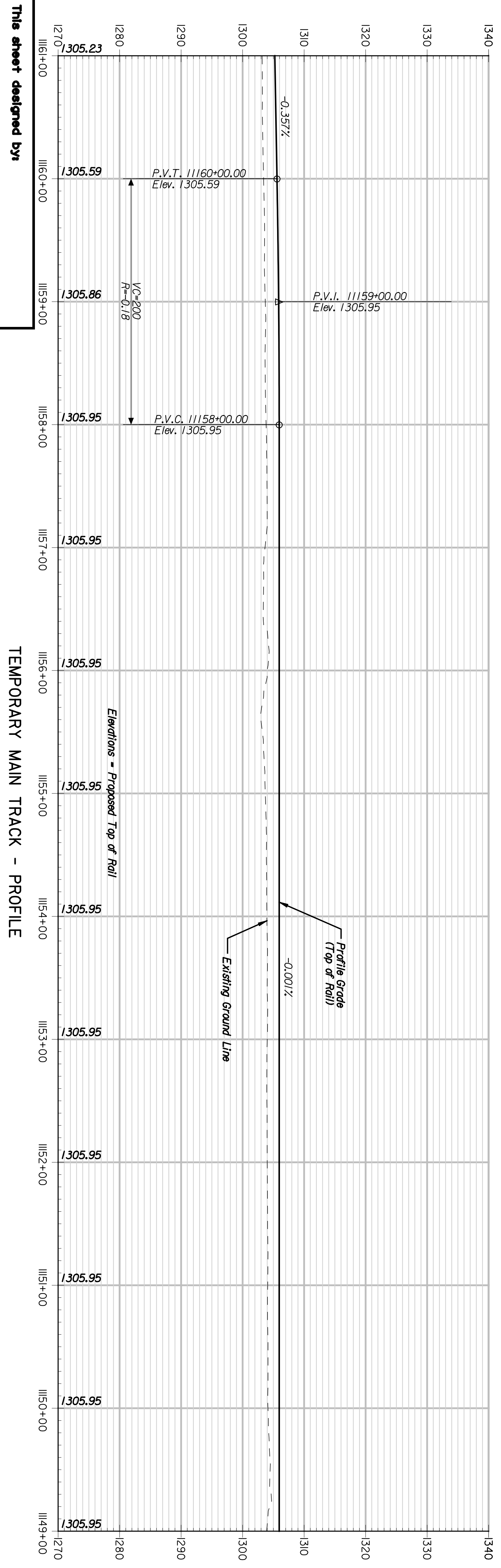
CP 108 Set 604 Nail of Point  
 N 169175.0791 E 1650869.0936  
 1. Intersection 9th St. & Santa Fe Ave.  
 2. No other Ties

BM #17 - Chiseled  $\nabla$  on Top of East Curbs on Santa Fe St. Centerline of East Entrances to St. Francis Medical Center, just South of Parking Garage. EL. 1302.81

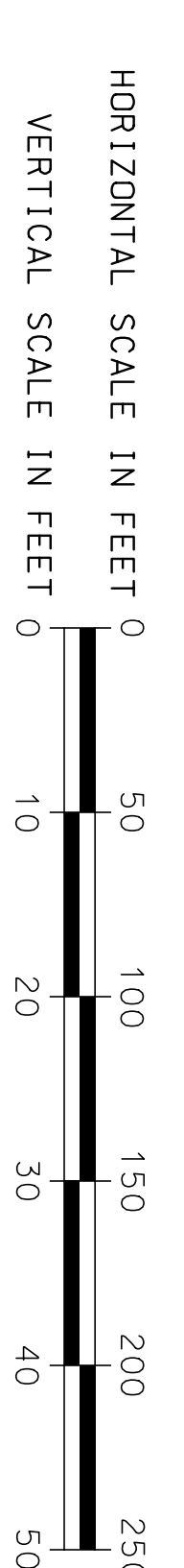
BM #18 - Chiseled  $\nabla$  on Northeast Corner of Concrete Sign Base, Southwest Corner of Intersection of Santa Fe St. & 9th Street, 78.29 FT., Sta. 11156+42.69, EL. 1304.60

BM #19 - Chiseled  $\nabla$  on Top of Curb, South Curb Return, Southwest Corner of Intersection of Santa Fe St. & 10th Street, 77.22 FT., Sta. 11149+66.59, EL. 1302.83

- NOTES:**
1. Removal of Existing Main Tracks to be done by contractor after operations have switched to Temporary Main Track.
  2. Existing RR Signal Equipment to be removed by BNSF.



TEMPORARY MAIN TRACK - PROFILE



**ENTEB**  
 ARCHITECTS ENGINEERS PLANNERS

SHEET NO.	OF	SCALE	APPD.
DESIGNED	REP.	DETAILED	JDS
DESIGN CR.	RSB	DETAILED CR.	REP.
			QUANTITIES
			TRACED
			TRACE CR.

**CITY OF WICHITA**  
**WICHITA CENTRAL CORRIDOR**  
 PHASE I - TRACK WORK  
 PLAN AND PROFILE  
 STA. 11149+00 TO STA. 11161+00

STATE	PROJECT NO.	YEAR	SHEET NO.	TOTAL SHEETS
KANSAS	472-84071	2005	RI.16	