

| | |
|----|------|
| BY | DATE |
| | |
| | |

11212+50

11212

GENERAL NOTES

| | | | | |
|--------|-------------|------|-----------|--------------|
| STATE | PROJECT NO. | YEAR | SHEET NO. | TOTAL SHEETS |
| KANSAS | 472-84071 | 2005 | RI.30 | |

EXISTING DIMENSION VERIFICATION:

Dimensions of the existing structure are based on old plans. The Contractor shall verify, by field measurement, the as-built dimensions of the existing structure.

PROTECTION FROM INCREMENT WEATHER:

It shall be the Contractor's responsibility to ensure that the Inclined Passage and Tunnel remain protected at all times from inclement weather and any potential water damage. The Contractor shall limit the time that the structures are left open and exposed to the weather. The Contractor shall submit to the Engineer his proposed sequence of construction and method of protection and obtain their approval prior to beginning any work.

TEMPORARY SECURITY:

A temporary security fence shall be installed around the perimeter of the bulkhead work area to preclude entry by trespassers. See Temporary Fence Plan drawing on Sheet RI.26. The existing Above Ground Structure over the Inclined Passage shall be kept locked and secured against trespassing, when not being used for construction access. The Above Ground Structure shall remain in place until the bulkhead wall construction is complete.

REMOVAL OF EXISTING STRUCTURES:

Removal of the existing above ground structure and a 1'-6" section of the existing tunnel top slab shall be included in the bid item, "Removal of Existing Structures", Lump Sum. All materials removed from the existing structure shall become the property of the Contractor. Remove this material from the site.

DRILLING & GROUTING:

This item shall consist of grouting reinforcing steel into the existing concrete as shown on the plans, with an epoxy grout. Locate each hole with the aid of a pachometer to miss the existing reinforcing steel. Drill the holes to the specifications required by the grout manufacturer and in such a manner as not to damage adjacent concrete or bars. After the hole is drilled, remove all loose material by using a wire brush to free the dust from the side of the hole and then vacuuming to remove material and dust. Follow the manufacturer's directions for mixing, application and curing. The tools, materials, labor and incidentals necessary to complete the work shall be included in the bid item, "Drilling & Grouting".

REINFORCING STEEL:

All reinforcing steel dimensions are to the centerline of bars unless otherwise noted. All new reinforcing steel shall conform to the requirements of ASTM A615 Grade 60. All existing reinforcing steel shall remain in place unless otherwise noted. The clear distance from face of concrete to near edge or end of reinforcing bar shall be 2" unless otherwise noted.

CONCRETE:

Concrete placed in the bulkhead shall be Grade 4.0 Concrete.

JOINT WATERPROOFING:

The construction joints at the juncture of the new bulkhead with the existing floor and each existing wall shall be waterproofed as shown on the plans, prior to placing the flowable fill. The construction joints at the juncture of the new bulkhead with the top of the existing top slab shall also be waterproofed as shown on the plans. Waterproofing shall conform to "Joint Waterproofing" as described in the BNSF Railway Standard Specifications under Waterproofing, Section 04800.

FLOWABLE FILL:

The existing tunnel and inclined passage shall be filled with flowable fill to the limits as shown on the plans. Access holes, to be cored in the top slab of the tunnel, will facilitate placing the flowable fill to the bottom of the top slab without any voids. The flowable fill in the inclined passage shall be brought up to match the elevation of the top of the top slab of the existing tunnel. All materials and labor shall be paid for under the bid item, "Flowable Fill", Cubic Yards. (See City of Wichita Standard Specifications Section 306, Flowable Fill.)

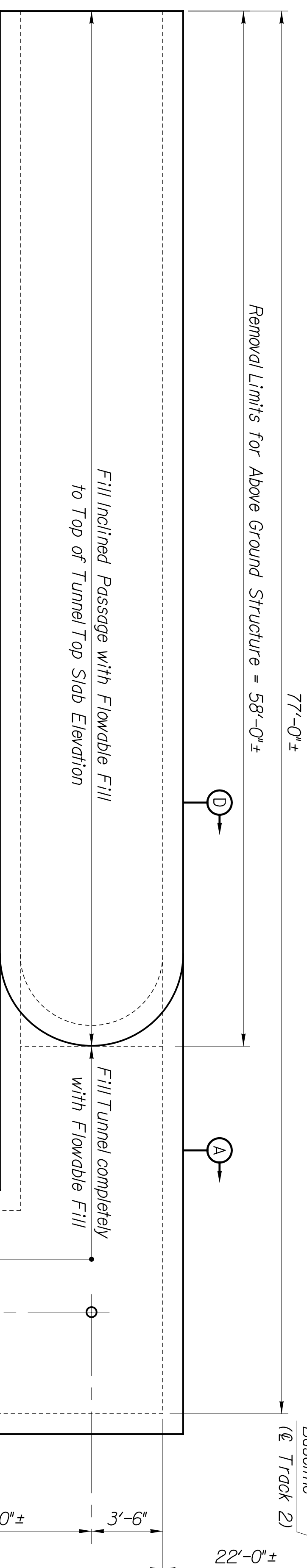
QUANTITIES:

Items not listed separately in the Summary of Quantities, such as any excavation required to construct the bulkhead or coring of access holes to facilitate flowable fill placement, are subsidiary to other items in the proposal.

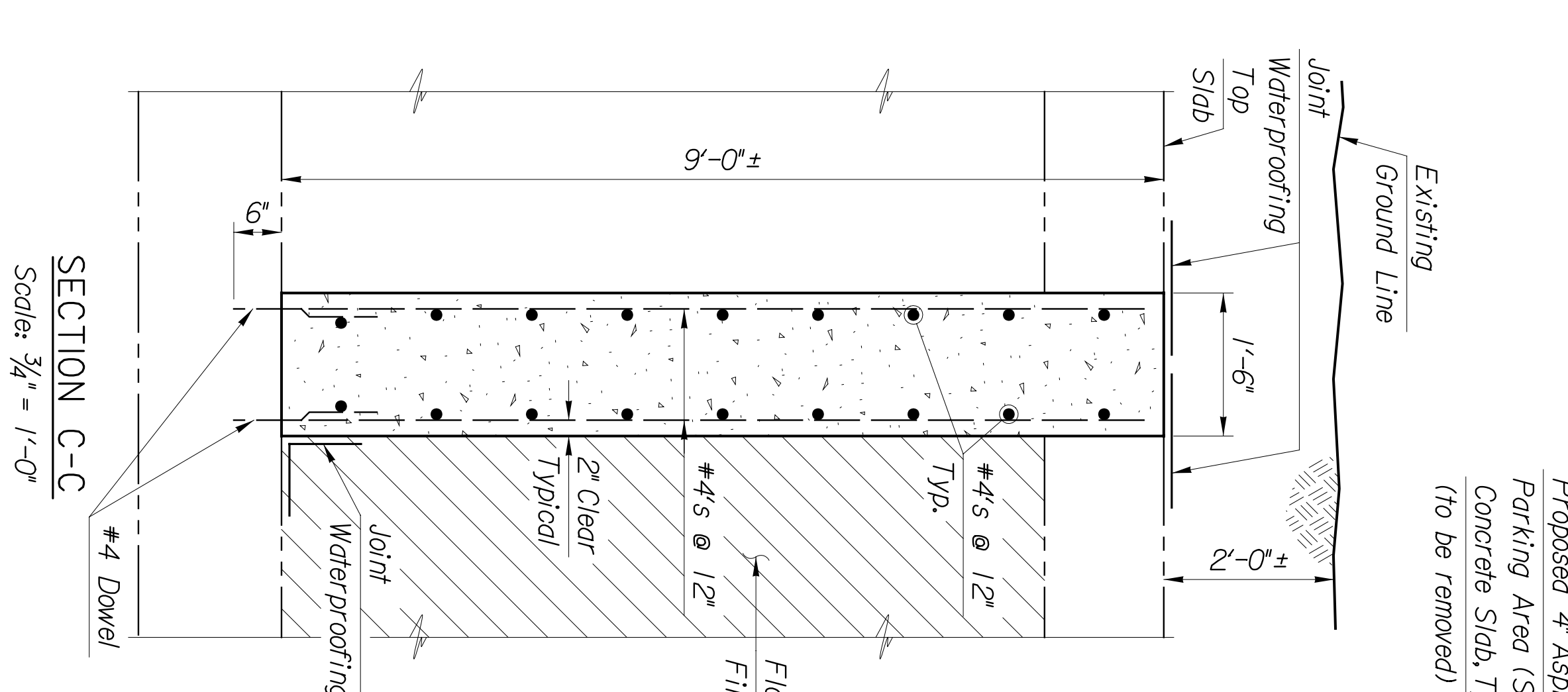
Fill gap between top of Flowable Fill and Asphalt Parking Area with Embankment.

Asphalt and Embankment quantities are included with the Railroad quantities.

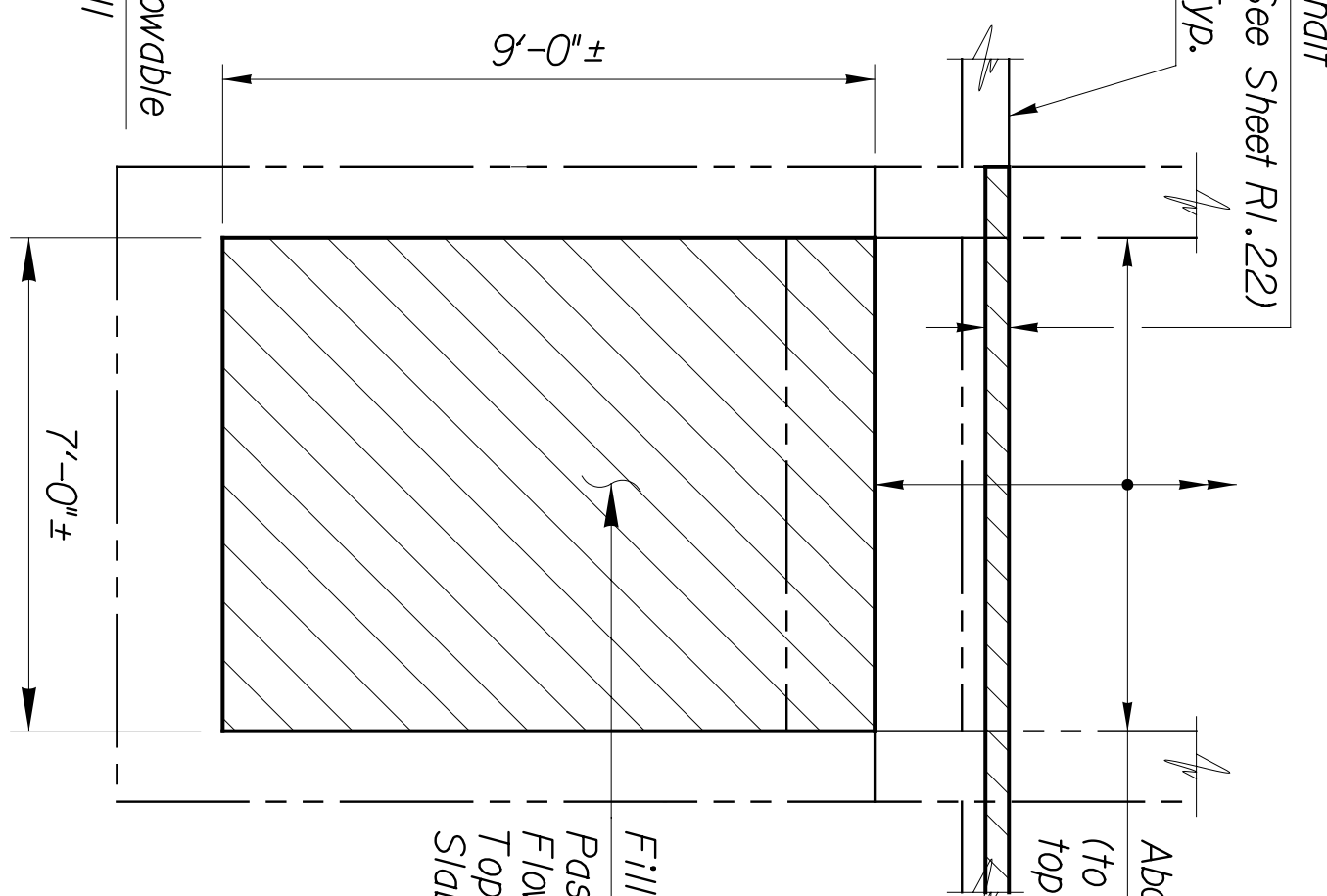
Inside the tunnel, all utilities included but not limited to alarm system, electrical, and fire protection, shall be removed and capped east of the new bulkhead. This work shall be subsidiary to Grade 4.0 Concrete. Cox Communications shall approve all work done on the utilities in their tunnel.



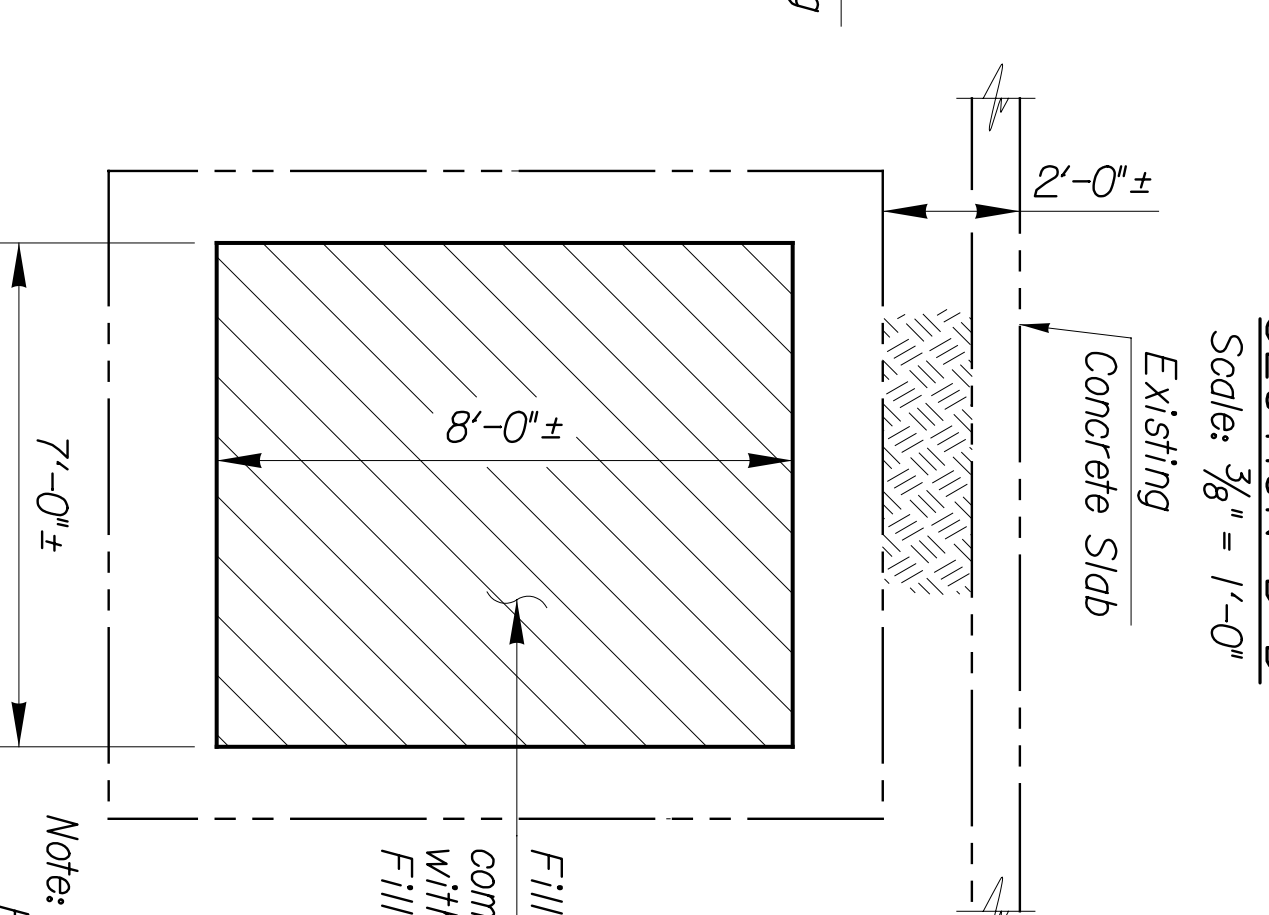
PLAN VIEW
 Scale: 1/4" = 1'-0"
 (Existing Concrete Slab not shown, see Sheet RI.22)



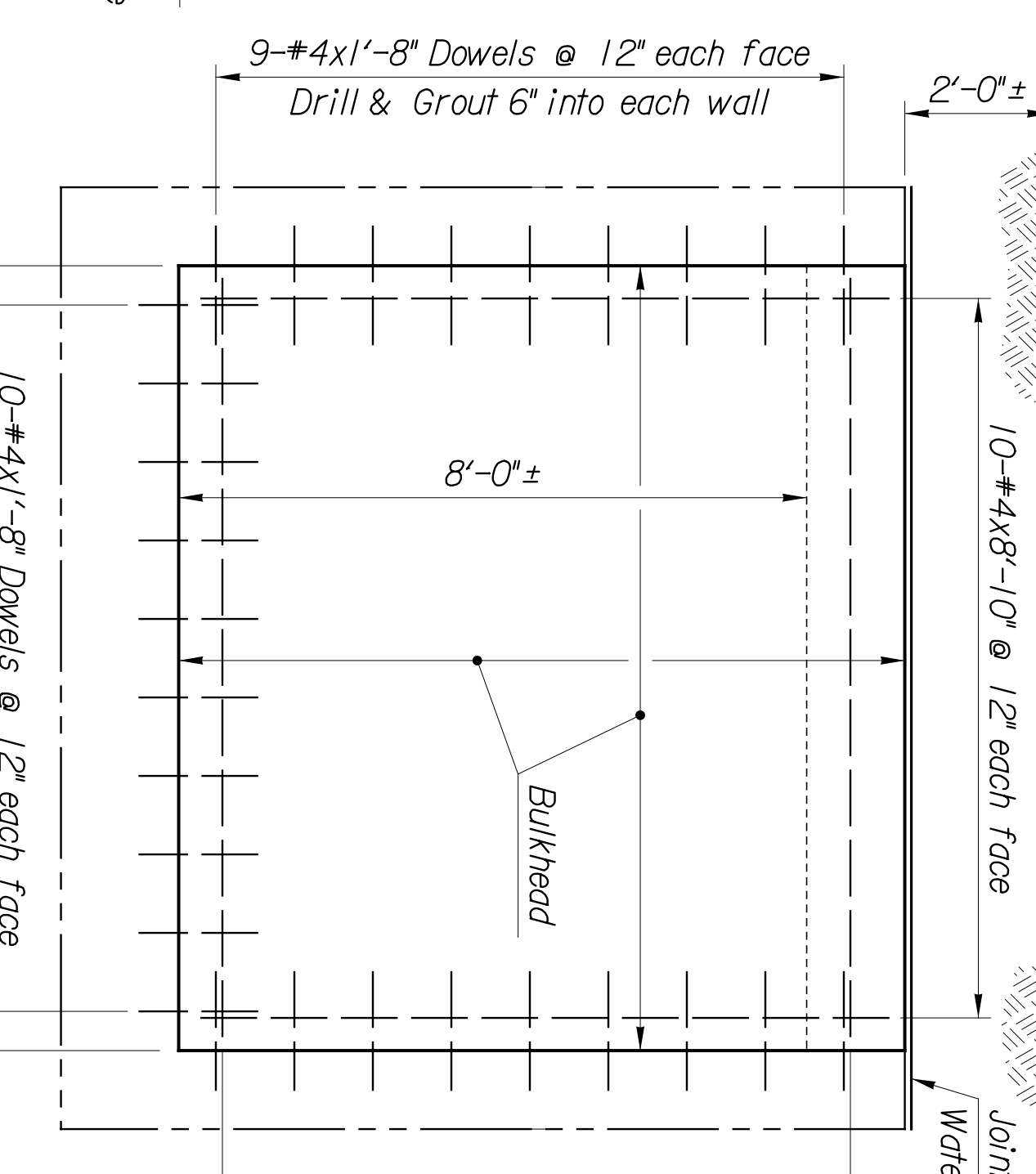
SECTION C-C
 Scale: 3/4" = 1'-0"



SECTION D-D
 Scale: 3/8" = 1'-0"



SECTION A-A
 Scale: 3/8" = 1'-0"



SECTION B-B
 Scale: 1/2" = 1'-0"

Notes:
 For clarity, existing reinforcing is not shown in Sections.

SUMMARY OF ESTIMATED QUANTITIES

| ITEM | UNITS | QUANTITY |
|-------------------------------------|----------|----------|
| Grade 4.0 Concrete | Cu. Yds. | 5.0 |
| Reinforcing Steel (Grade 60) | Lbs. | 300 |
| Drilling & Grouting | Each | 56 |
| Flowable Fill | Cu. Yds. | 162 |
| Joint Waterproofing | Lin. Ft. | 50 |
| Fence (Chain Link) (8') (Temporary) | Lin. Ft. | 80 |

| NO. | DATE | REVISIONS | BY | APP'D. |
|-----|------|-----------|----|--------|
| 1 | | | | |
| 2 | | | | |
| 3 | | | | |

CITY OF WICHITA
WICHITA CENTRAL CORRIDOR
DETAILS FOR FILLING EXISTING UNION STATION TUNNEL

| | | | | |
|-----------|----|-------|------------|--------|
| SHEET NO. | OF | SCALE | APP'D. | TRACED |
| DESIGNED | BY | DATE | QUANTITIES | OR. |
| DRAWN | BY | DATE | QUANTITIES | OR. |

ENTEB
 ARCHITECTS ENGINEERS PLANNERS

This sheet designed by: