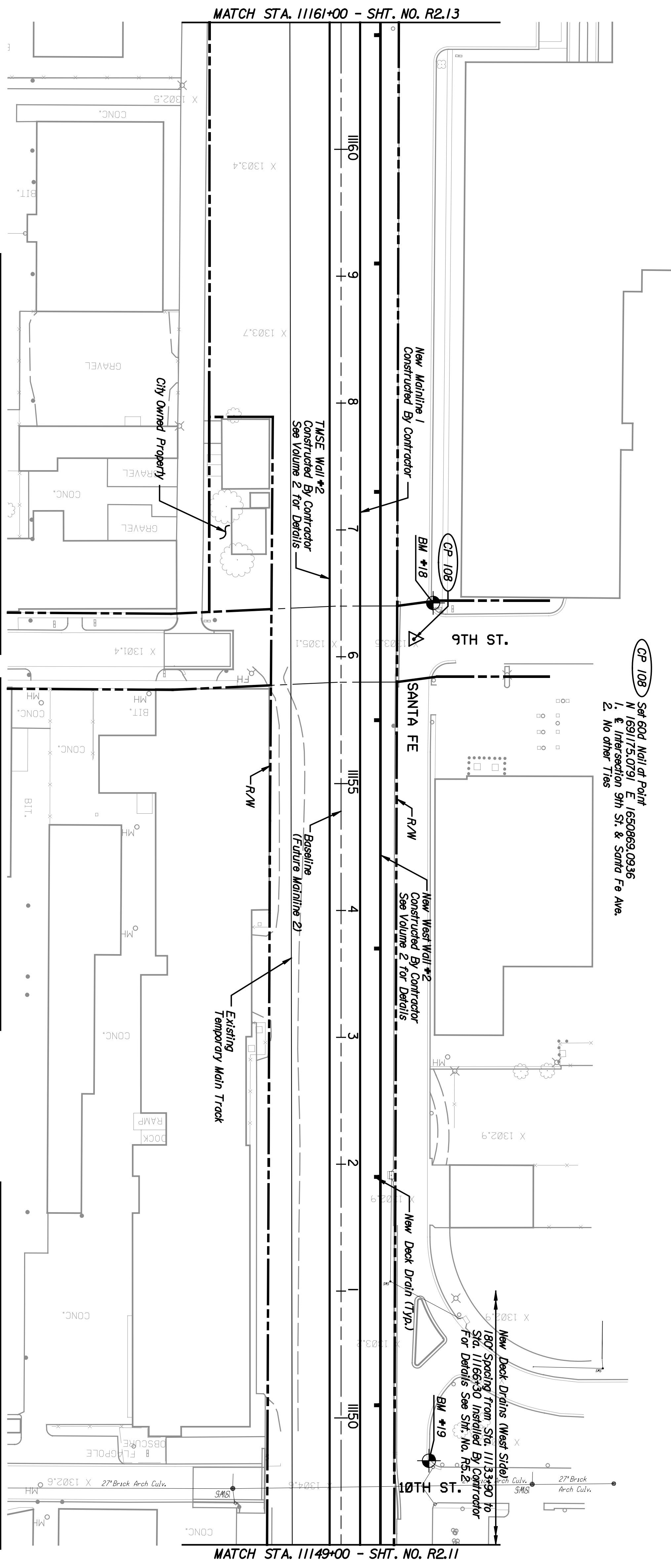


BY	DATE

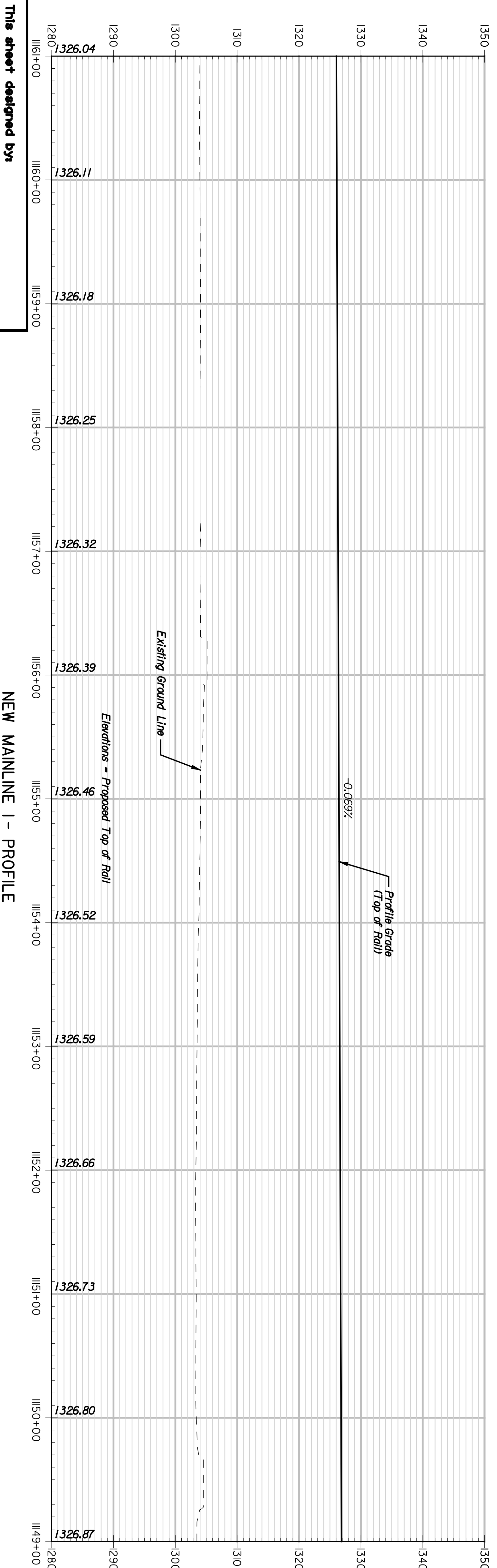


CP 108 Set 604 Nail of Point
 N 169175.0791 E 1650869.0936
 1. & Intersection 9th St. & Santa Fe Ave.
 2. No other Ties

BM #17 - Chiseled T on Top of East Curb on Santa Fe St. Centerline of East Entrance to St. Francis Medical Center, just South of Parking Garage. EL. 1302.81

BM #18 - Chiseled T on Northeast Corner of Concrete Sign Base, Southwest Corner of Intersection of Santa Fe St. & 9th Street, 78.29 FT., Sta. 11156+42.69, EL. 1304.60

BM #19 - Chiseled T on Top of Curb, South Curb Return, Southwest Corner of Intersection of Santa Fe St. & 10th Street, 77.22 FT., Sta. 11149+66.58, EL. 1302.83

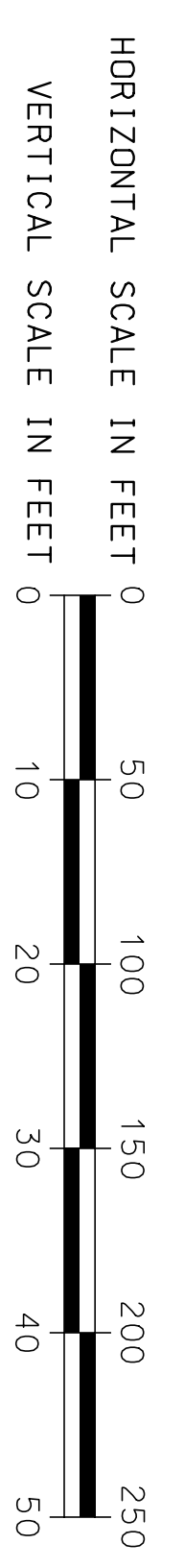


This sheet designed by:



ARCHITECTS ENGINEERS PLANNERS

NEW MAINLINE 1 - PROFILE



STATE	PROJECT NO.	YEAR	SHEET NO.	TOTAL SHEETS
KANSAS	472-84071	2005	R2.12	

CITY OF WICHITA	
WICHITA CENTRAL CORRIDOR	
PHASE 2 - TRACK WORK	
PLAN AND PROFILE	
STA. 11149+00 TO STA. 11161+00	
DESIGNED BY: RSB	APP'D: [Signature]
CHECKED BY: RSB	QUANTITIES: [Signature]
DATE: [Blank]	TRACED BY: [Blank]
SCALE: [Blank]	DATE: [Blank]

SHEET NO.	OF	SCALE	APP'D	QUANTITIES	TRACED
DESIGNED	BY	DATE	CHECKED	DATE	DATE
DESIGN	CR.	RSB	RSB		