

STATE	PROJECT NO.	YEAR	SHEET NO.	TOTAL SHEETS
KANSAS	472-84071	2005	R3.12	

BY	DATE

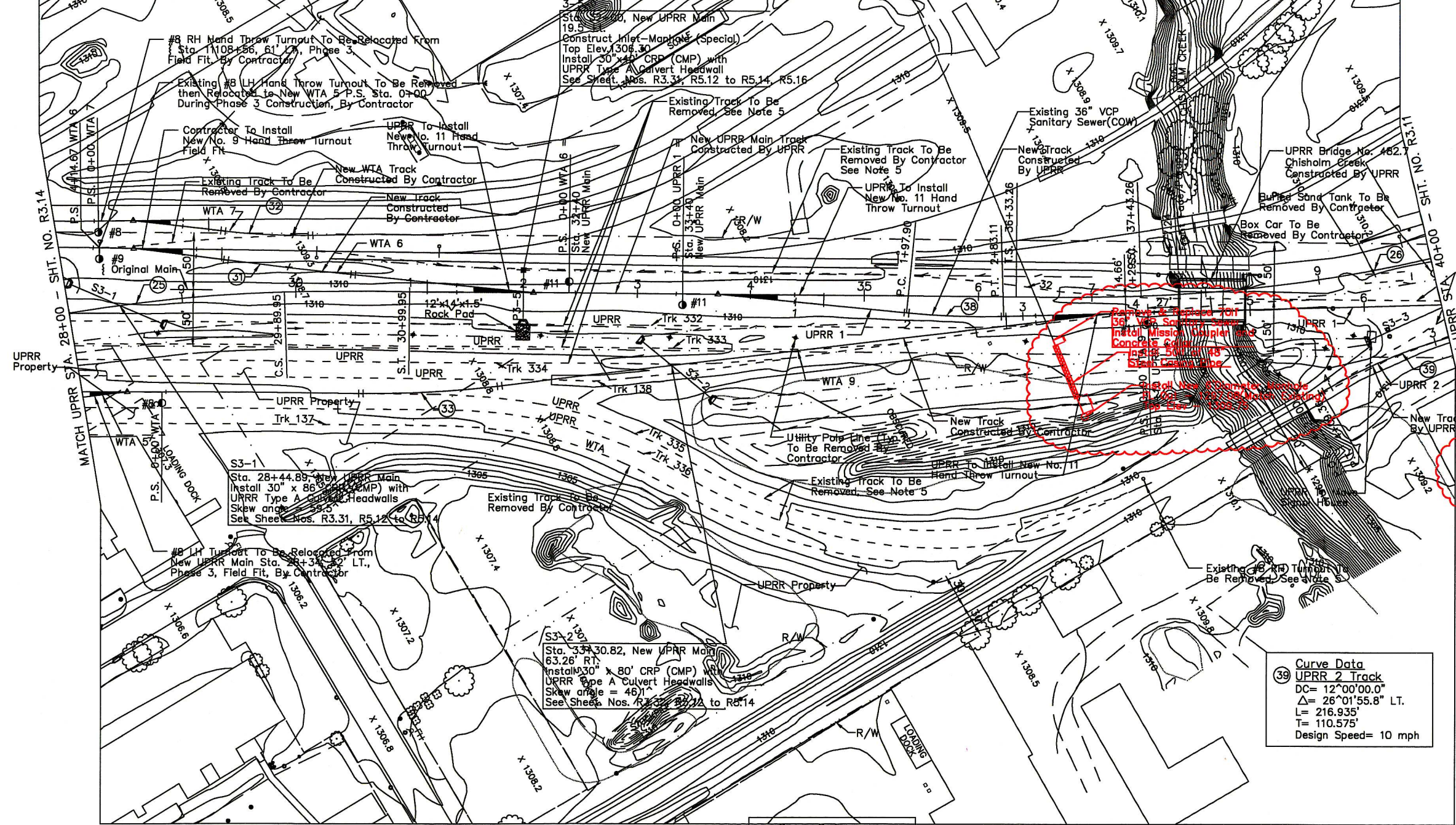
25 Curve Data
 New UPRR Main Track
 DC= 4°00'00.0"
 Δ= 46°58'24.0" RT.
 L= 1064.572'
 T= 558.210'
 Ls= 110.000'
 Ts= 677.703'
 Superelevation= 2%
 Design Speed= 35 mph

32 Curve Data
 WTA 7 Track
 DC= 10°00'00.0"
 Δ= 7°41'32.0" LT.
 L= 76.922'
 T= 38.568'
 Design Speed= 10 mph

31 Curve Data
 WTA 6 Track
 DC= 1°30'00.0"
 Δ= 1°41'21.2" RT.
 L= 112.606'
 T= 56.313'
 Design Speed= 10 mph

26 Curve Data
 New UPRR Main Track
 DC= 4°20'00.0"
 Δ= 24°45'21.2" LT.
 L= 461.318'
 T= 233.082'
 Ls= 118.000'
 Ts= 345.823'
 Superelevation= 2%
 Design Speed= 35 mph

WCL2 3/8" 6 Rebar w/ Alum. Cap Stamped "WCL2" & Center Punched, Flush with Ground N 1699093.7020 E 1650080.8808 Elev. 1310.23
 1. To Back of S. Curb of 21st St. 56.86' N
 2. To Base of Chain Link Fence 6.82' E
 3. To Face of PP 35.82' SSE
 4. To Center of Curb Inlet 32.67' WNW



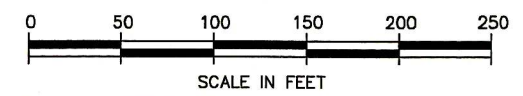
- NOTES:**
1. Removal of existing WTA track to be done by the contractor prior to the construction of new track.
 2. For profiles of UPRR and WTA tracks, see sheet numbers R3.25 to R3.30.
 3. For special ditch profiles, see sheet number R3.26.
 4. For additional alignment data, see sheet numbers R3.2 to R3.3.
 5. Rail, Joint Bars and Turnouts from the following tracks are to be removed and stockpiled at a site selected by the UPRR, Ties, Plates and Spikes to be disposed of by the contractor.
 - Track 332 - 805' including Turnout
 - Track 333 - 763' including Turnout
 - Track 334 - 742' including Turnout
 - Track 335 - 840'
 - Track 336 - 962' including Turnout
 - Track 138 - 1775' including Turnout
 - Track 32 - 354' including Turnout
 Remaining Track Material to be disposed of.

This sheet designed by:
HNTB
 ARCHITECTS ENGINEERS PLANNERS

33 Curve Data
 WTA 9 Track
 DC= 8°30'00.0"
 Δ= 7°16'47.2" RT.
 L= 85.645'
 T= 42.919'
 Design Speed= 10 mph

38 Curve Data
 UPRR 1 Track
 DC= 2°00'00.0"
 Δ= 2°05'15.0" RT.
 L= 104.375'
 T= 52.196'
 Design Speed= 20 mph

39 Curve Data
 UPRR 2 Track
 DC= 12°00'00.0"
 Δ= 26°01'55.8" LT.
 L= 216.935'
 T= 110.575'
 Design Speed= 10 mph



3					
2					
1					
NO.	DATE	REVISIONS	BY	APP'D	
CITY OF WICHITA					
WICHITA CENTRAL CORRIDOR					
PHASE 3 - TRACK WORK PLAN					
SHEET NO.	OF	SCALE	APP'D		
DESIGNED	REP	DETAILED	JDG	QUANTITIES	TRACED
DESIGN CK.	RSB	DETAIL CK.	REP	QUAN. CK.	TRACE CK.

Plotted on: \$time\$
 \$sumname\$ Plot Queue: \$square\$
 Plot Scale: \$scale\$ Pen Table: \$pen\$
 Design Filename: \$file\$