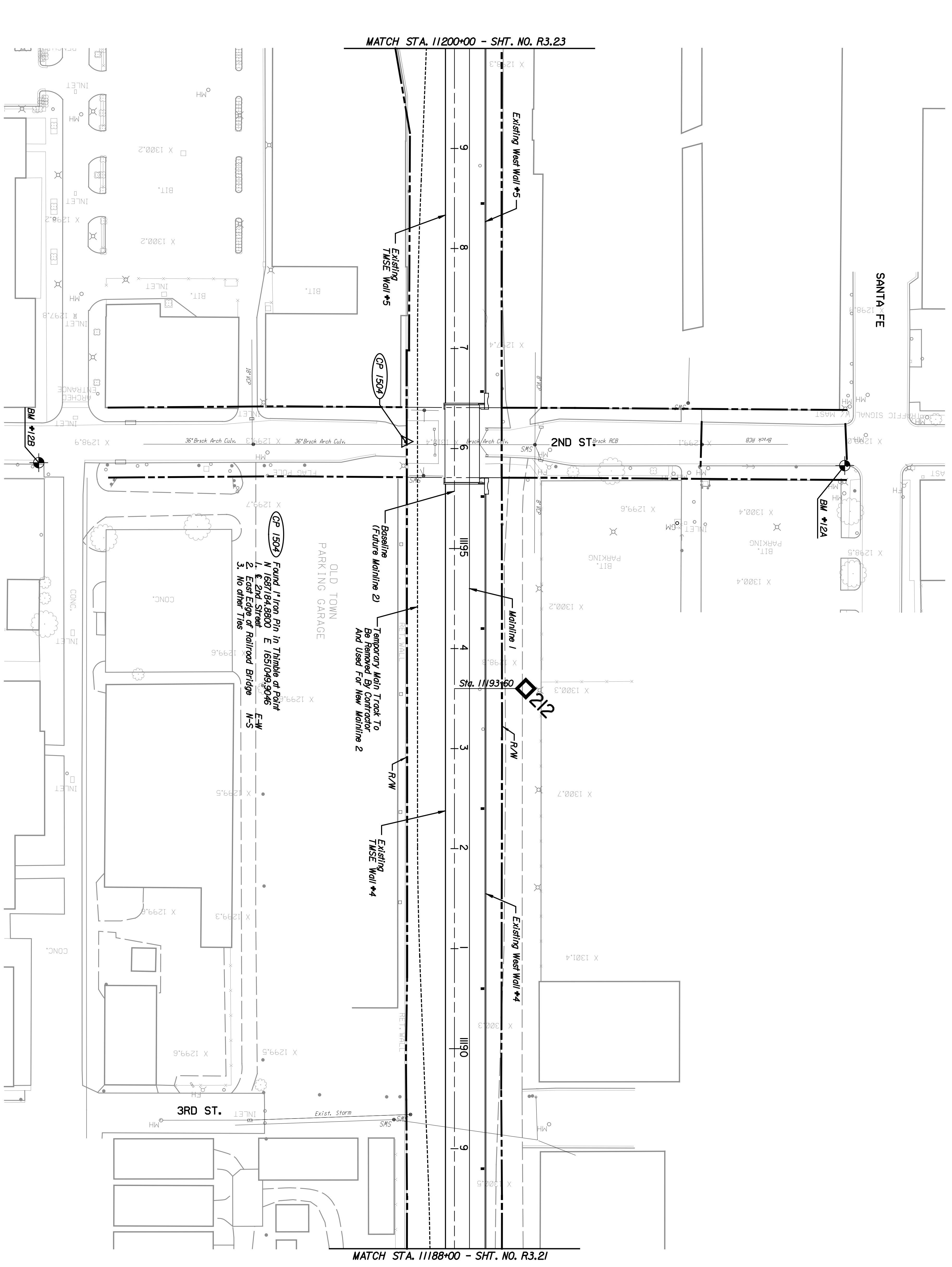


	BY	DATE

ENTB
 ARCHITECTS ENGINEERS PLANNERS

This sheet designed by:



BM #12B - Chiseled T on Top of North Curb on 2nd Street, Northeast Corner of 2nd Street & Mead St., 417.35' LT., Sta. 11193+86.37', E.L. 1298.39
 * Existing Mainline Stationing

BM #12A - Chiseled T on East End of Northeast Curb, Return, Northeast Corner of 2nd Street & St. Francis St., 387.51' RT., Sta. 11193+82.52', E.L. 1298.39
 * Existing Mainline Stationing

CP 1504 Found 1" Iron Pin in Thimble at Point N 1687184.8800 E 1651049.3046
 1. East Edge of Railroad Bridge N-S
 2. East Edge of Railroad Bridge N-S
 3. No other Ties

Temporary Main Track To Be Removed By Contractor And Used For New Mainline 2

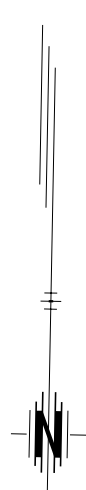


SHEET NO.	OF	SCALE	APPD.
DESIGNED	REP	DETAILED	JDS
DESIGN CR.	RSB	DETAILED CR.	REP
			QUANTITIES
			TRACED
			TRACE CR.

CITY OF WICHITA
WICHITA CENTRAL CORRIDOR
 PHASE 3 - TRACK WORK
 PLAN
 STA. 1188+00 TO STA. 11200+00

NO.	DATE	REVISIONS	BY	APPD.
1				
2				
3				

NOTES:
 1. Removal of Temporary Main Track South of Temporary UPRR Connection to be done by the contractor after operations have switched to the New UPRR Main Track.



STATE	PROJECT NO.	YEAR	SHEET NO.	TOTAL SHEETS
KANSAS	472-84071	2005	R3.22	