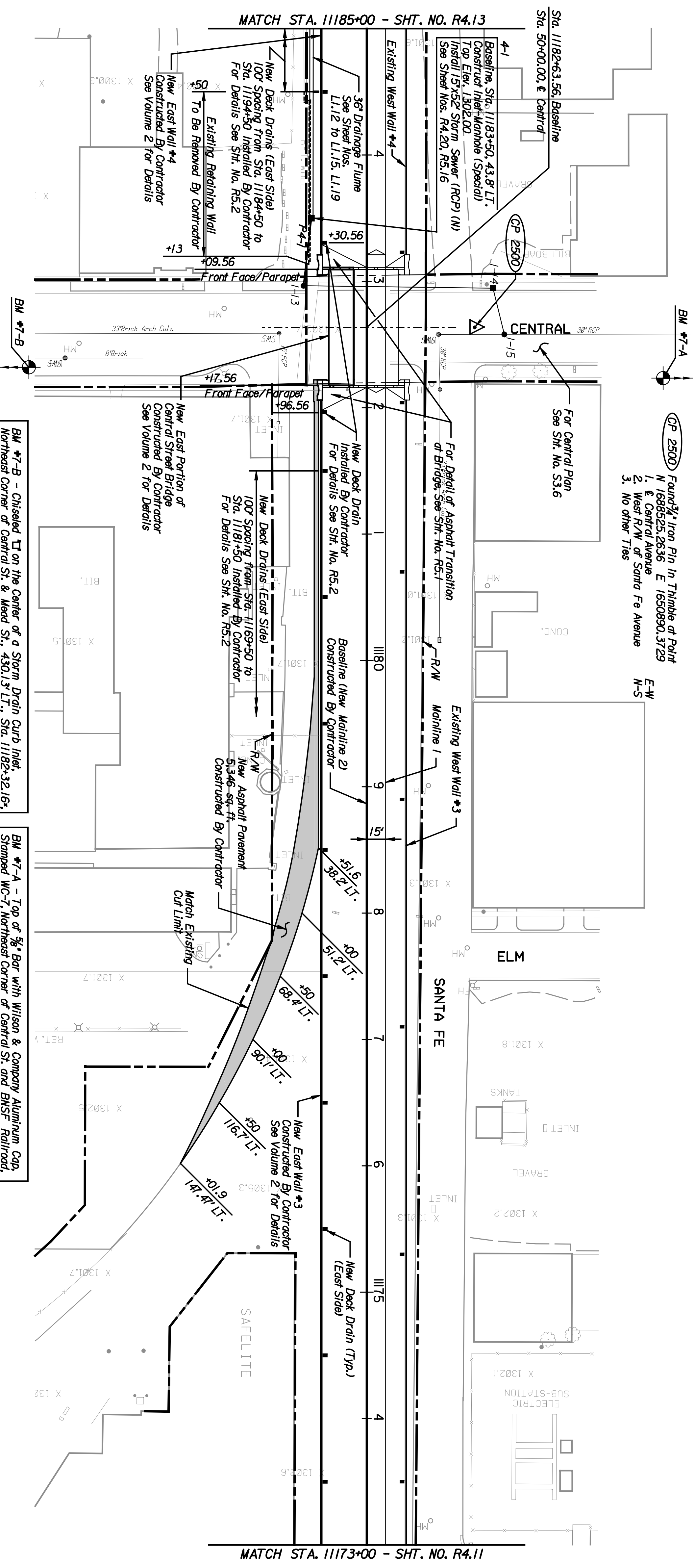


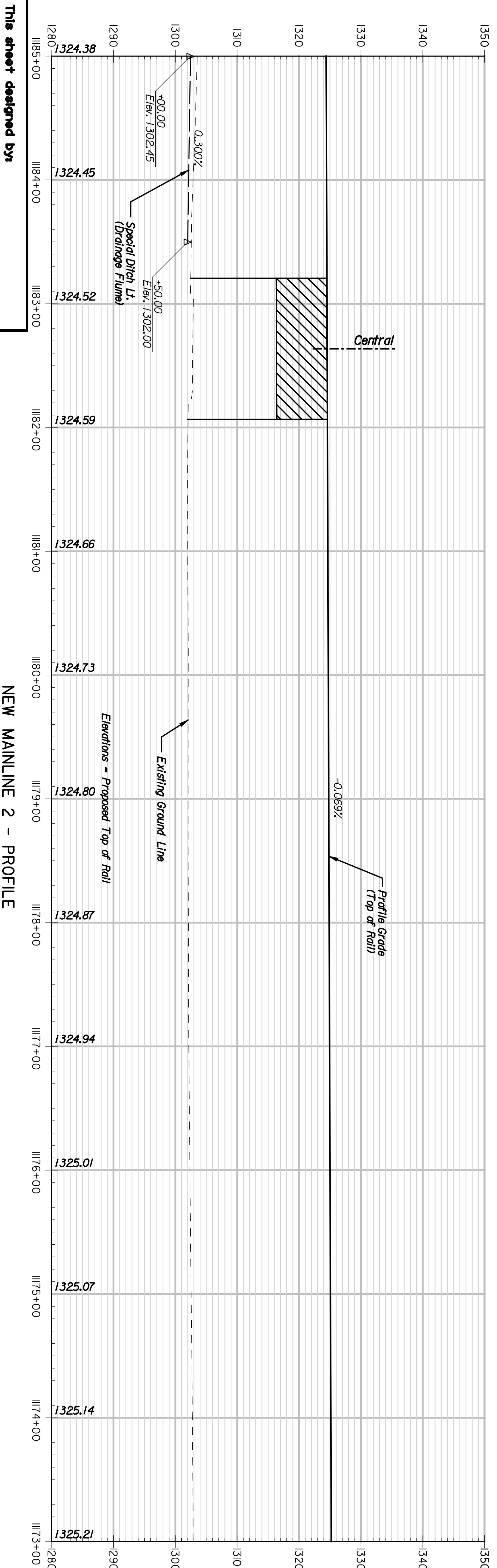
BY	DATE



BM \*7-B - Chiseled  $\square$  on the Center of a Storm Drain Curb Inlet, Northeast Corner of Central St. & Mead St., 430.13' LT., Sta. 11182+32.16', EL. 1298.53  
 \* Existing Mainline Stationing

BM \*7-A - Top of  $\frac{3}{8}$ " Bar with Wilson & Company Aluminum Cap, Stamped WC-7, Northeast Corner of Central St. and BNSF Railroad, 394.17' RT., Sta. 11182+23.35', EL. 1301.90  
 \* Existing Mainline Stationing

CP 2500 Found  $\frac{3}{4}$ " Iron Pin in Thimble of Point N. 1688525.2636 E. 1650890.3729  
 1. Central Avenue  
 2. West R/W of Santa Fe Avenue  
 3. No other Ties

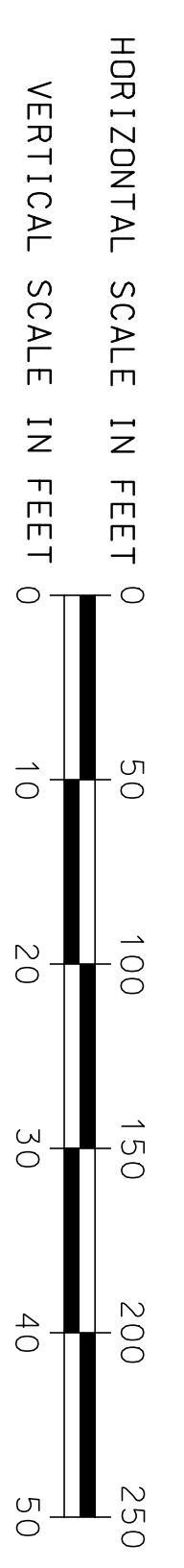


This sheet designed by:

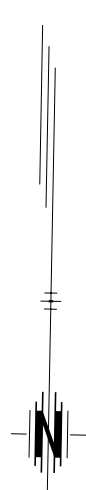


ARCHITECTS ENGINEERS PLANNERS

NEW MAINLINE 2 - PROFILE



STATE	PROJECT NO.	YEAR	SHEET NO.	TOTAL SHEETS
KANSAS	472-84071	2005	R4.12	



NO.	DATE	REVISIONS	BY	APP'D.
3				
2				
1				

SHEET NO.	OF	SCALE	DESIGNED	CHK'D	APP'D.	TRACED

WICHITA CENTRAL CORRIDOR  
 PHASE 4 - TRACK WORK  
 PLAN AND PROFILE  
 STA. 11173+00 TO STA. 11185+00