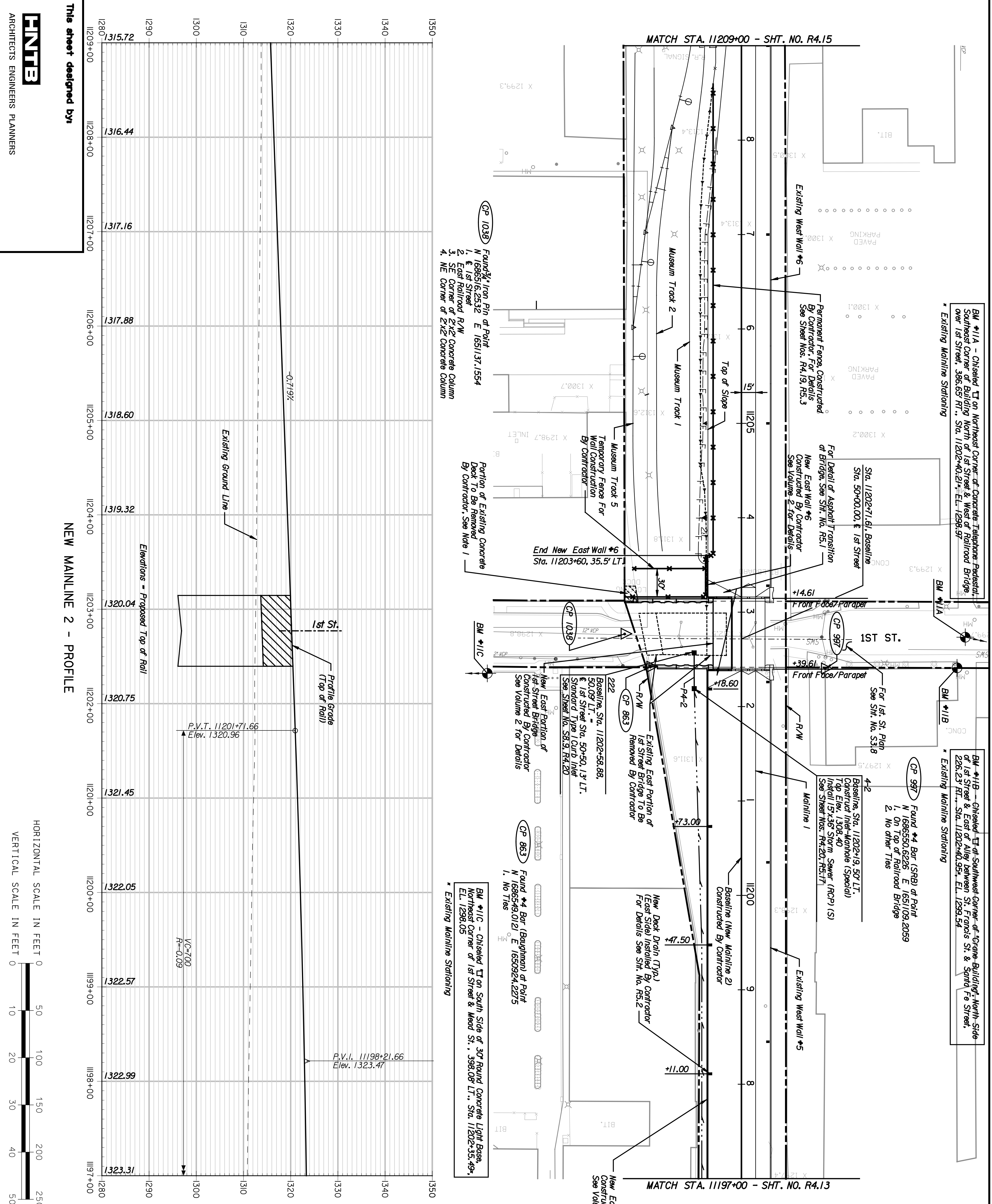


DATE	BY



BM #1/A - Chiseled T on Northeast Corner of Concrete Telephone Pedestal, Southeast Corner of Building North of 1st Street & West of Railroad Bridge over 1st Street, 386.65' RT., Sta. 11202+40.21, E.L. 1299.97
 * Existing Mainline Stationing

BM #1/B - Chiseled T of Southwest Corner of Crane Building, North Side of 1st Street & East of Alley between St. Francis St. & Santa Fe Street, 226.23' RT., Sta. 11202+40.95, E.L. 1299.54
 * Existing Mainline Stationing

CP 997 Found #4 Bar (SRB) at Point N 1686550.8226 E 1651109.2059
 1. On Top of Railroad Bridge
 2. No other Ties

CP 997 Baseline, Sta. 11202+19.50' LT., Construct Inter-Mainline (Special) Top Elev. 1308.40 Install 15x36 Storm Sewer (RCP) (S) See Sheet Nos. R4,20, R5,17

Sta. 11202+71.61, Baseline Sta. 50+00.00, E 1st Street
 For Detail of Asphalt Transition at Bridge, See Sht. No. R5,1
 New East Wall #6 Constructed By Contractor See Volume 2 for Details

From P-0967 Parapet
 For 1st St. R/W See Sht. No. S3,8

CP 863 Found #4 Bar (Baughman) at Point N 1686549.0121 E 1650924.2275
 1. No Ties

BM #1/C - Chiseled T on South Side of 30' Round Concrete Light Base, Northeast Corner of 1st Street & Mead St., 398.09' LT., Sta. 11202+35.49, E.L. 1298.05
 * Existing Mainline Stationing

CP 1038 Found #4 Iron Pin at Point N 1686516.2532 E 165137.1554
 1. E 1st Street
 2. East Railroad R/W
 3. SE Corner of 2x2 Concrete Column
 4. NE Corner of 2x2 Concrete Column

CP 863 Found #4 Bar (Baughman) at Point N 1686549.0121 E 1650924.2275
 1. No Ties

BM #1/C - Chiseled T on South Side of 30' Round Concrete Light Base, Northeast Corner of 1st Street & Mead St., 398.09' LT., Sta. 11202+35.49, E.L. 1298.05
 * Existing Mainline Stationing

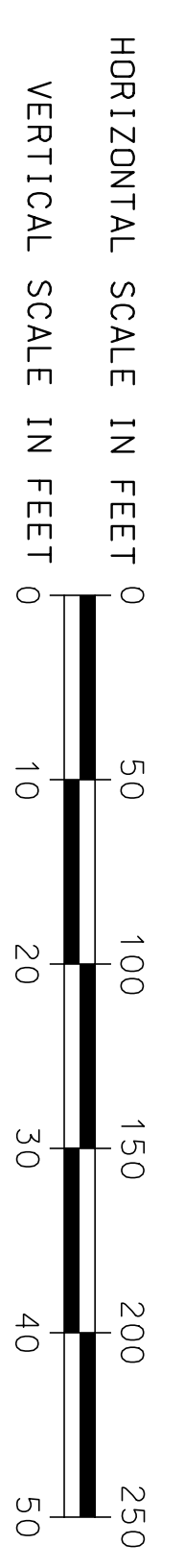
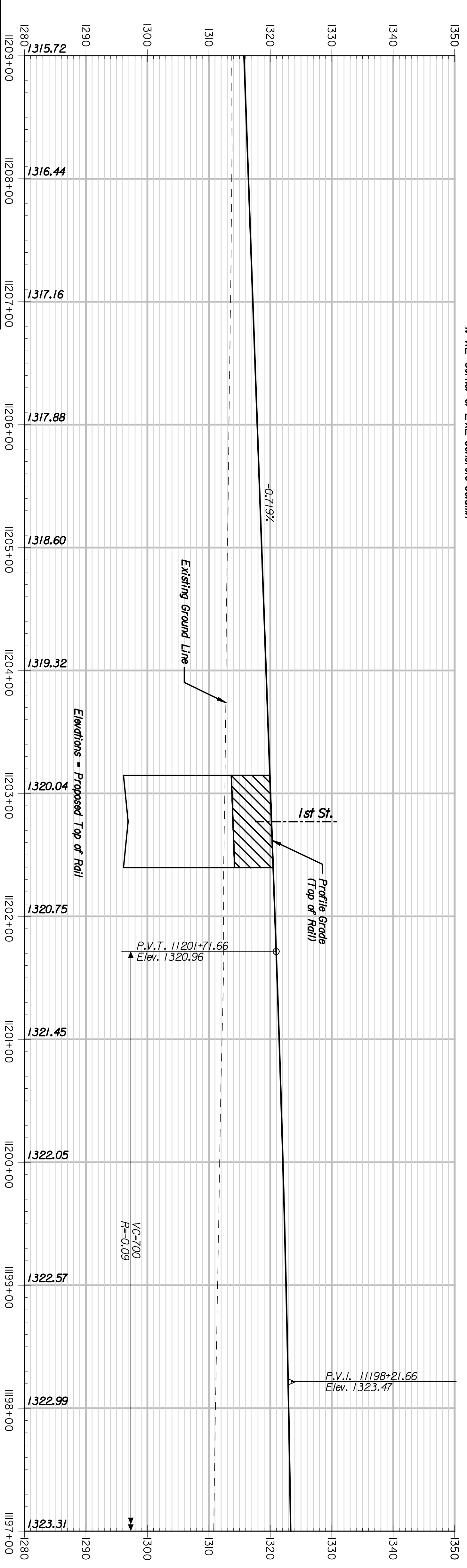
NOTES:
 1. Northern 18' Portion of Existing Concrete Deck to be removed, and ± 30' of existing hand rail to be removed and replaced on the new North end of the deck.

This sheet designed by:



ARCHITECTS ENGINEERS PLANNERS

NEW MAINLINE 2 - PROFILE



REVISIONS	
NO.	DATE

CITY OF WICHITA
WICHITA CENTRAL CORRIDOR
PHASE 4 - TRACK WORK
PLAN AND PROFILE
STA. 1197+00 TO STA. 11209+00

SHEET NO.	OF	SCALE	DATE	DESIGNED BY	CHKD. BY	APP'D.

STATE	PROJECT NO.	YEAR	SHEET NO.	TOTAL SHEETS
KANSAS	472-84071	2005	R4.14	