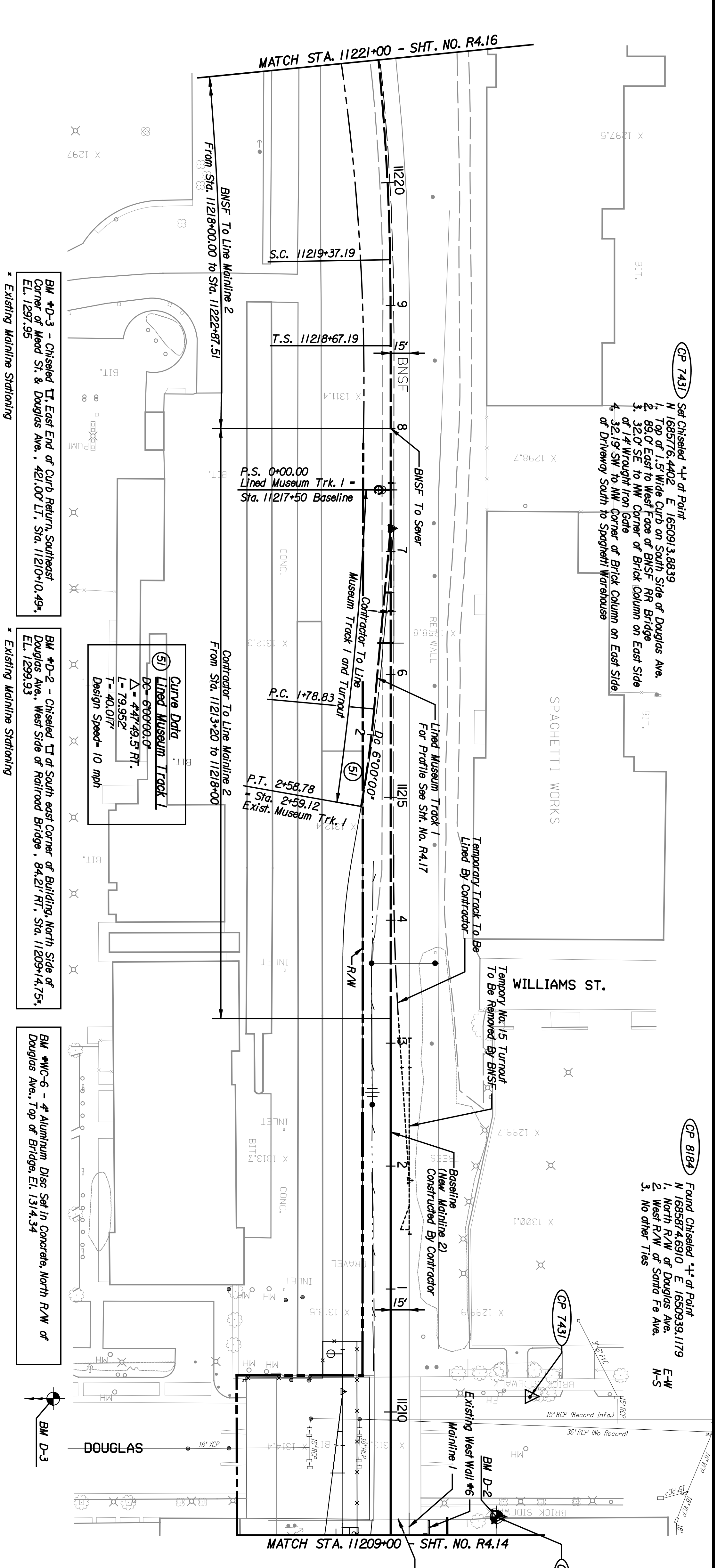
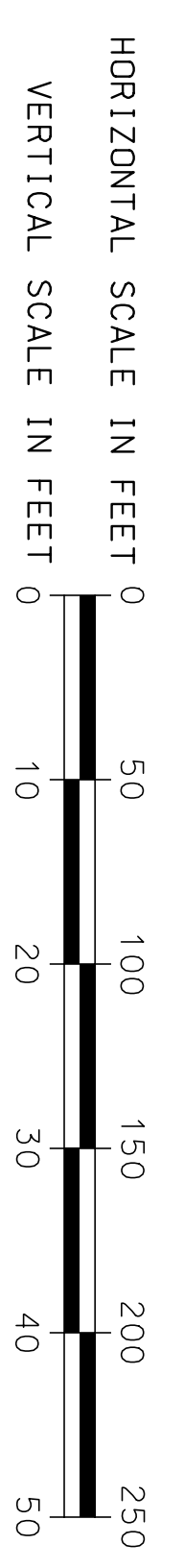
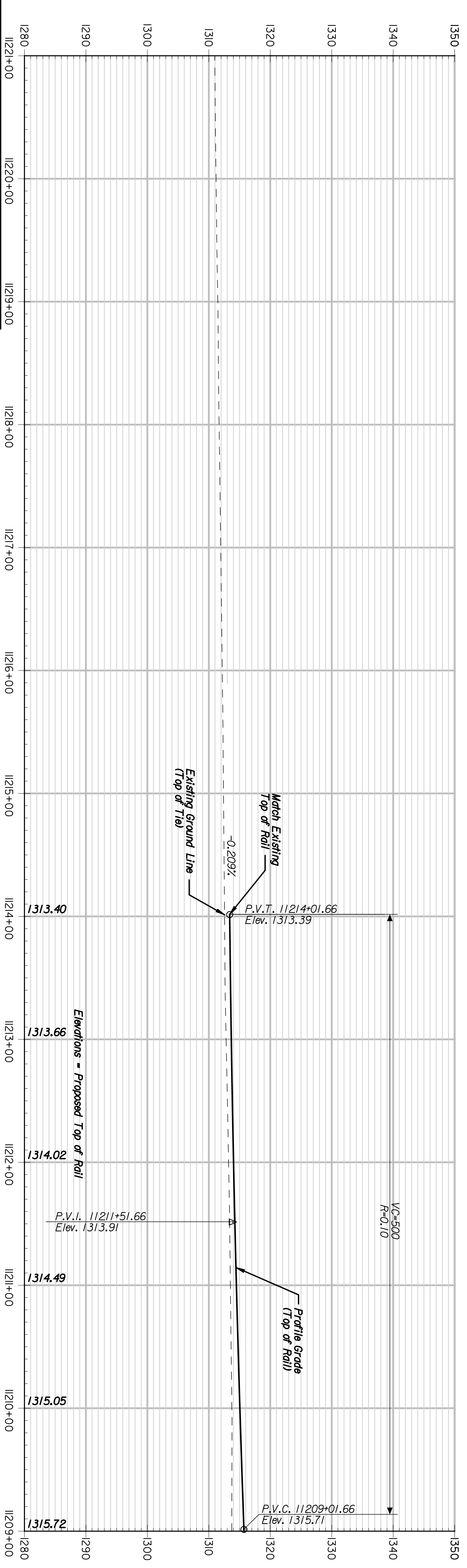


BY	DATE

CNTB
 ARCHITECTS ENGINEERS PLANNERS

This sheet designed by:

NEW MAINLINE 2 - PROFILE



BM #D-3 - Chiseled "T" East End of Curb Return, Southeast Corner of Mead St. & Douglas Ave., 421.00' L.T., Sta. 11210+10.49s, EL. 1297.95
 * Existing Mainline Stationing

BM #D-2 - Chiseled "T" of South east Corner of Building, North Side of Douglas Ave., West Side of Railroad Bridge, 84.21' RT., Sta. 11209+4.75s, EL. 1299.93
 * Existing Mainline Stationing

BM #WC-6 - 4" Aluminum Disc Set in Concrete North R/W of Douglas Ave., Top of Bridge, EL. 1314.34

BM D-3

GP 7431 Set Chiseled "T" at Point
 1. Top of 1.5' Wide Curb on South Side of Douglas Ave.
 2. 89' East to West Face of BNSF RR Bridge
 3. 32' SE to NW Corner of Brick Column on East Side of 24" Rough Iron Gate
 4. 32.19' SW to NW corner of Brick Column on East Side of Diagonal Warehouse

GP 8184 Found Chiseled "T" at Point
 1. 18358' 4.6310' E. 1650339.1179' E-W
 2. North R/W of Douglas Ave.
 3. West R/W of Santa Fe Ave.
 N-S
 No other Ties

For Douglas Bridge Redesigning
 Plans See Sht. Nos. B8.1 to B8.22

STATE	PROJECT NO.	YEAR	SHEET NO.	TOTAL SHEETS
KANSAS	472-84071	2005	R4.15	

CITY OF WICHITA			
WICHITA CENTRAL CORRIDOR			
PHASE 4 - TRACK WORK			
PLAN AND PROFILE			
STA. 11209+00 TO STA. 11221+00			
SHEET NO.	DATE	REVISIONS	BY
1			
2			
3			

DESIGNED	SCALE	APP'D.	TRACED
REP. CK.			
DESIGN CK.			