

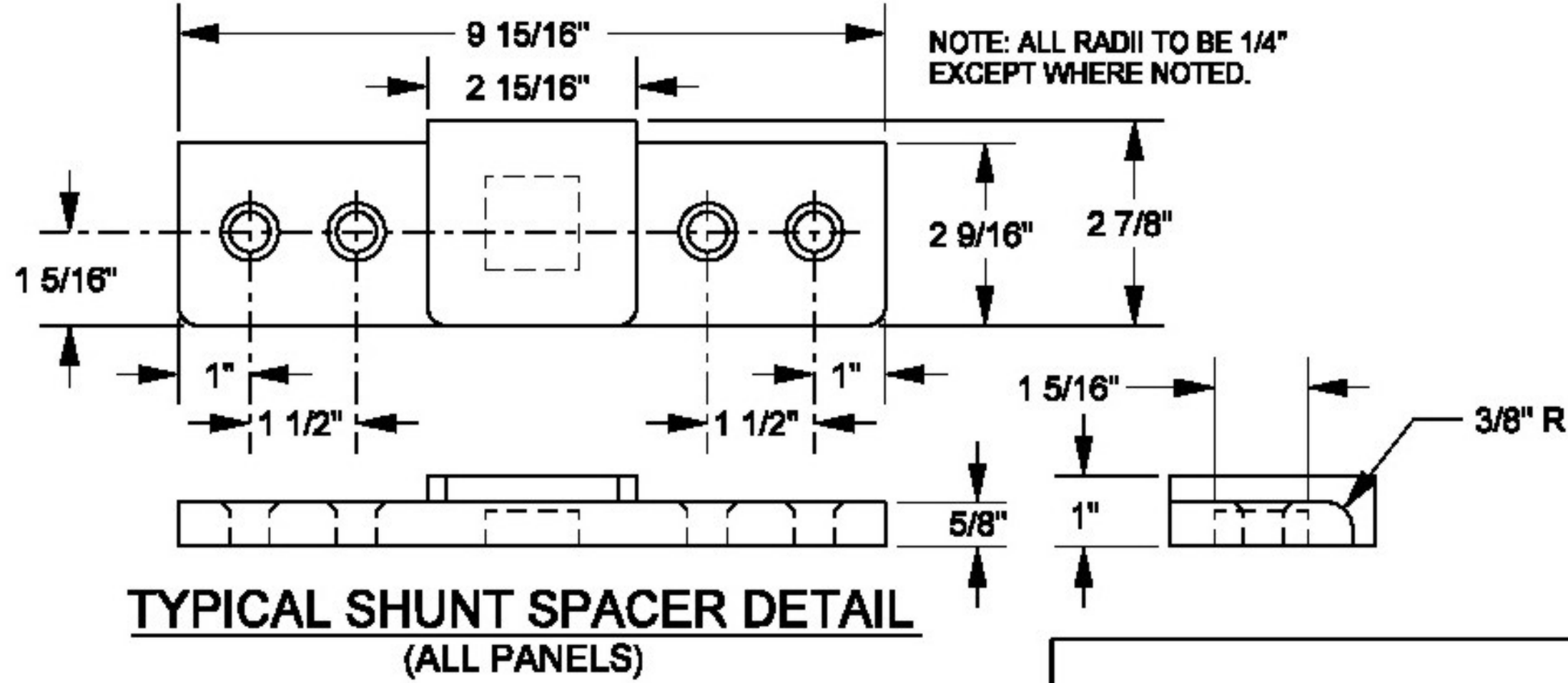
	BY	DATE



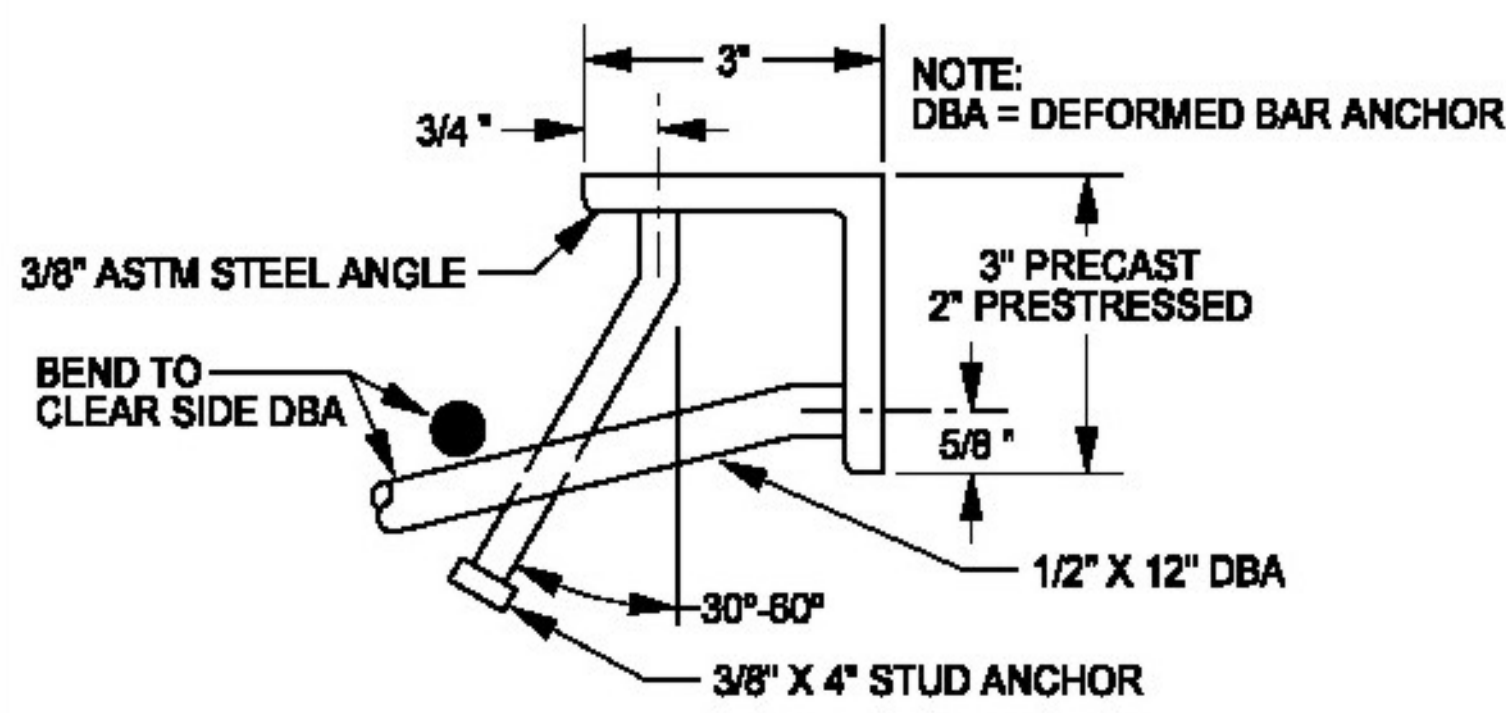
ARCHITECTS ENGINEERS PLANNERS

This sheet designed by:

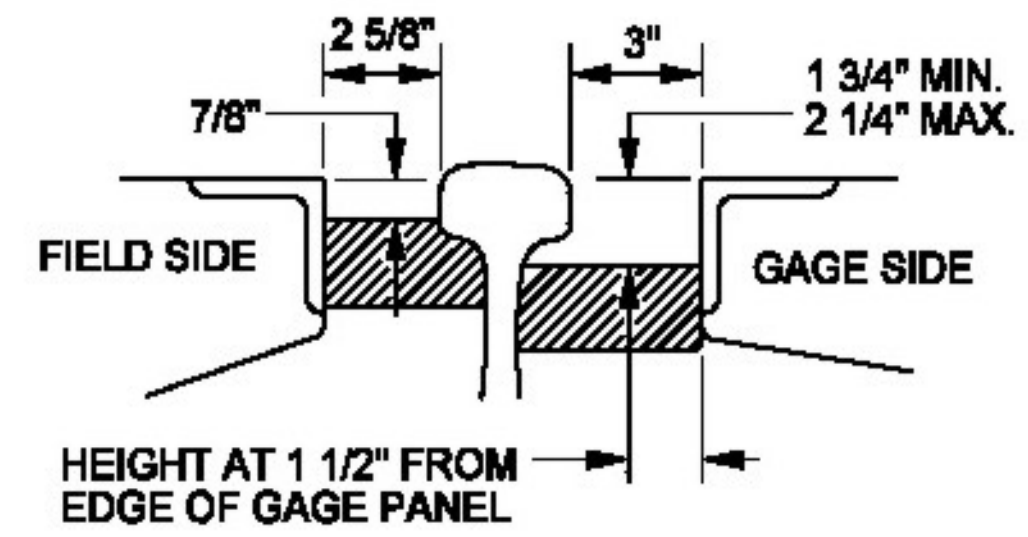
200900



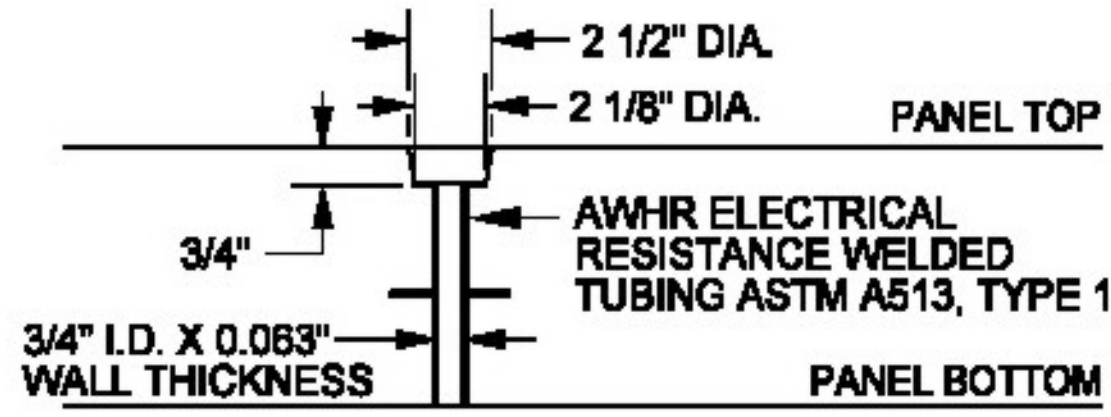
TYPICAL SHUNT SPACER DETAIL
(ALL PANELS)



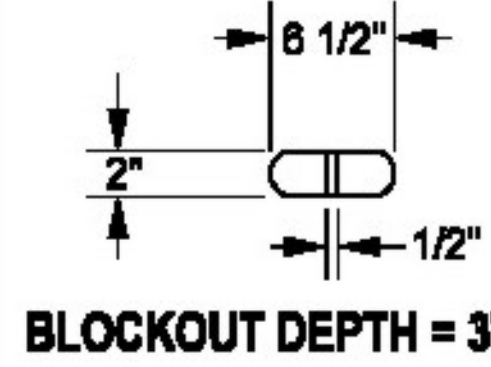
END FRAME DETAIL
(ALL PANELS)



TYPICAL PREATTACHED FLANGEWAY FILLER
(ALL PANELS)



LAG HOLE DETAIL
(9W & 10W)

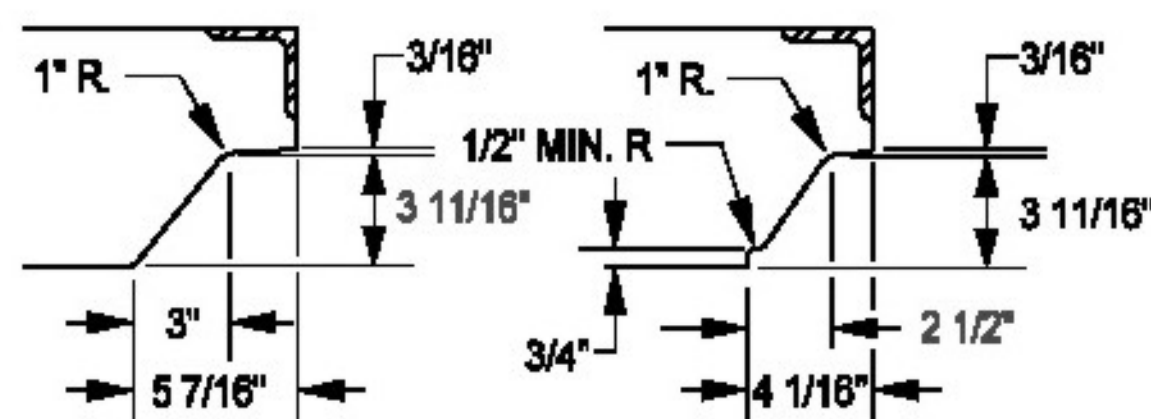


BLOCKOUT DEPTH = 3"

LIFTING INSERTS SHALL BE DESIGNED WITH A MINIMUM SAFETY FACTOR=4. PROFESSIONAL ENGINEER STAMPED AND SEALED DETAILS AND DESIGN CALCULATIONS MUST BE SUBMITTED FOR REVIEW AND APPROVAL PRIOR TO FABRICATION.

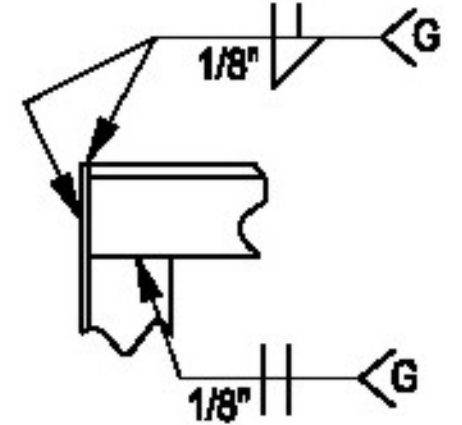
LIFTING INSERTS SHALL BE MECHANICALLY GALVANIZED OR SIMILARLY PROTECTED AGAINST CORROSION.

LIFTING DEVICES SHALL BE USABLE WITH BURKE OR DAYTON 5-TON CLUTCH SYSTEMS.

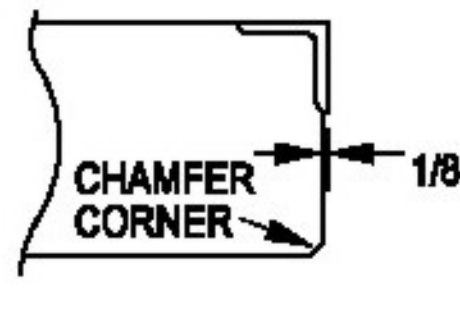


FIELD PANEL
(9W, 10W, & 10C)

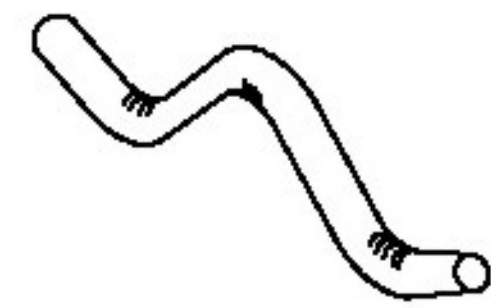
GAGE PANEL
(9W, 10W, & 10C)



WELD DETAIL
(ALL PANELS)



END DETAIL
(ALL PANELS)



TYPICAL LIFTING DEVICE AND BLOCKOUT
(ALL PANELS)



COMMON STANDARDS



TYPICAL DETAILS FOR CONCRETE PANELS

FILE OWNER: UPRR	DATE: APRIL 30, 2003
REV. NO.: 3	DWG NO: 200900

...200900r3.dgn 05/01/2003 12:53:01 PM

SHEET NO.	OF	SCALE	APPROVED	QUANTITIES	TRACED
DESIGNED	BY	DATE	DATE	DATE	DATE
DESIGN OK.	SCALE	DATE	DATE	DATE	DATE
DETAIL OK.	SCALE	DATE	DATE	DATE	DATE

CITY OF WICHITA
WICHITA CENTRAL CORRIDOR
PRECAST CONCRETE CROSSING
BNSF / UPRR
COMMON STANDARDS

STATE	PROJECT NO.	YEAR	SHEET NO.	TOTAL SHEETS
KANSAS	472-84071	2005	RS-7	