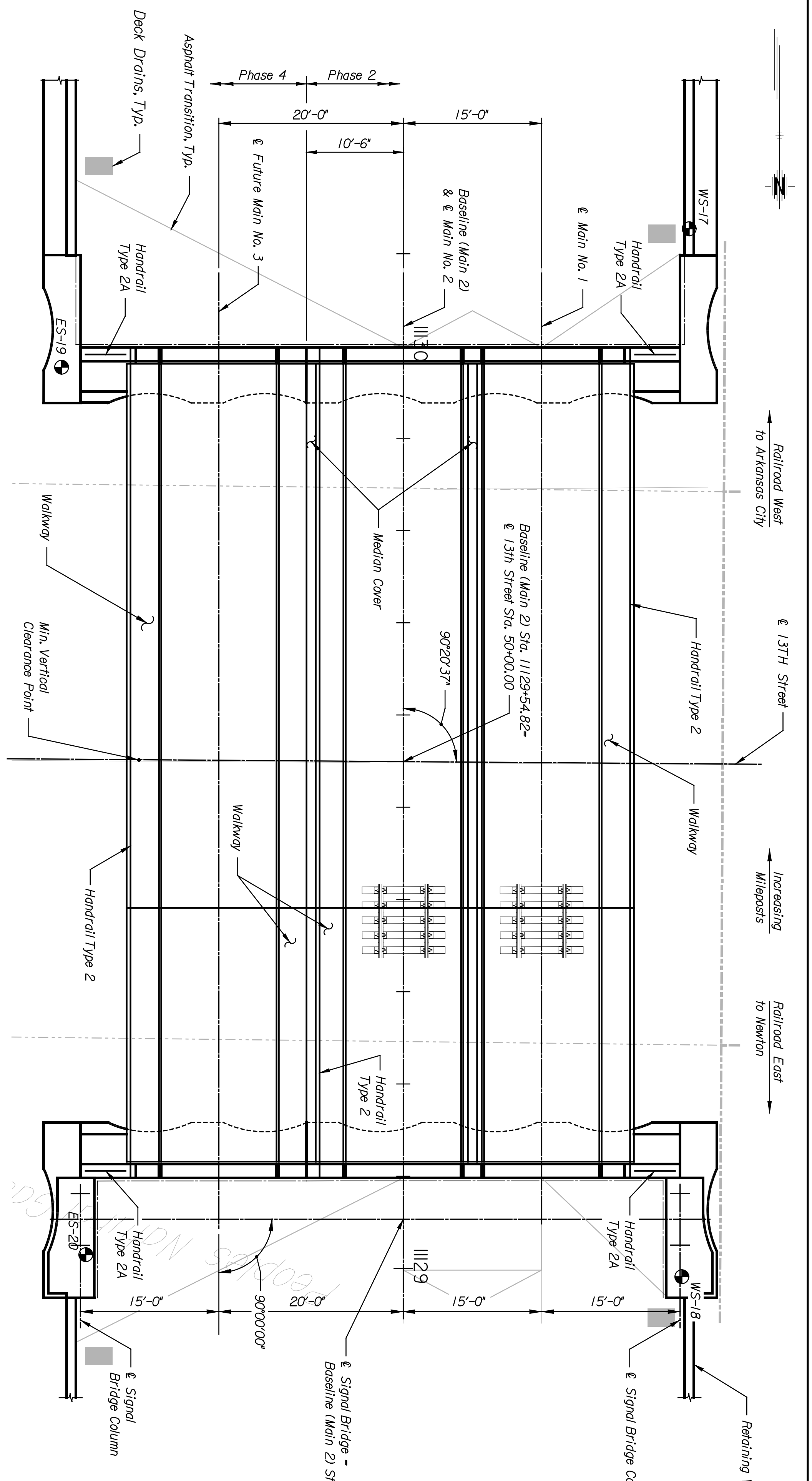
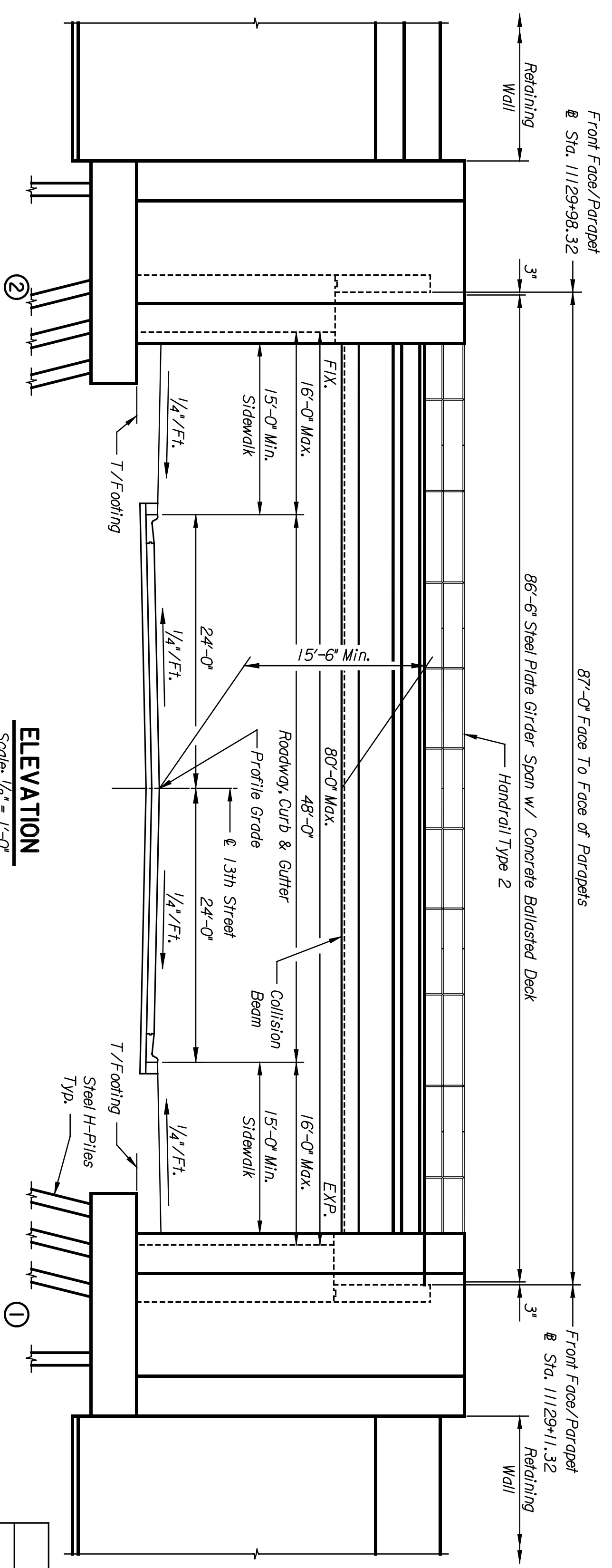


BY	DATE

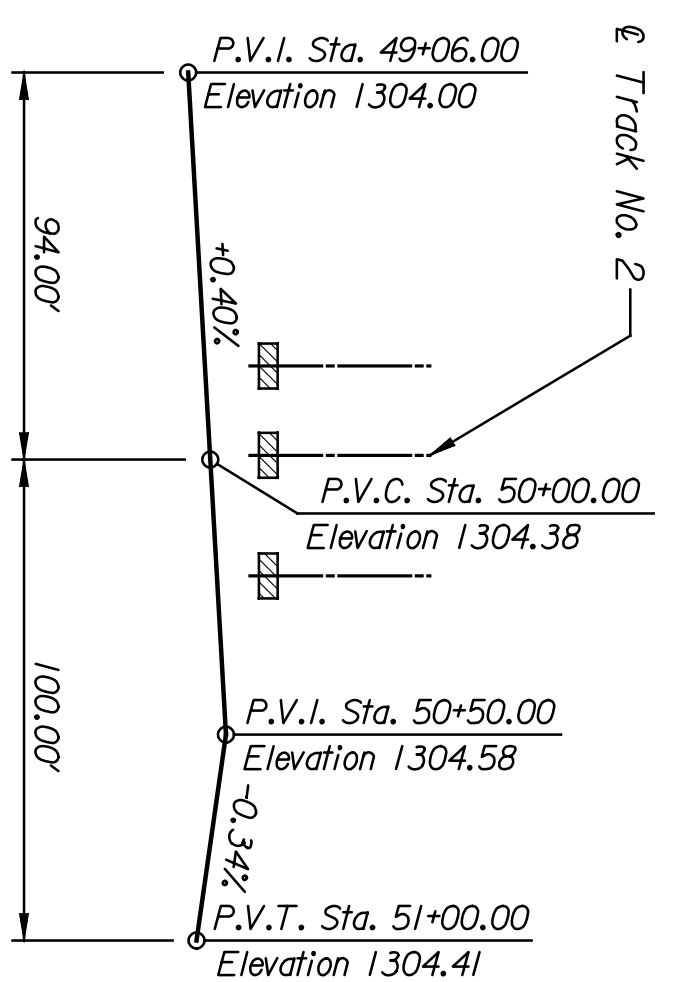


**PLAN**  
 Scale: 1/8" = 1'-0"

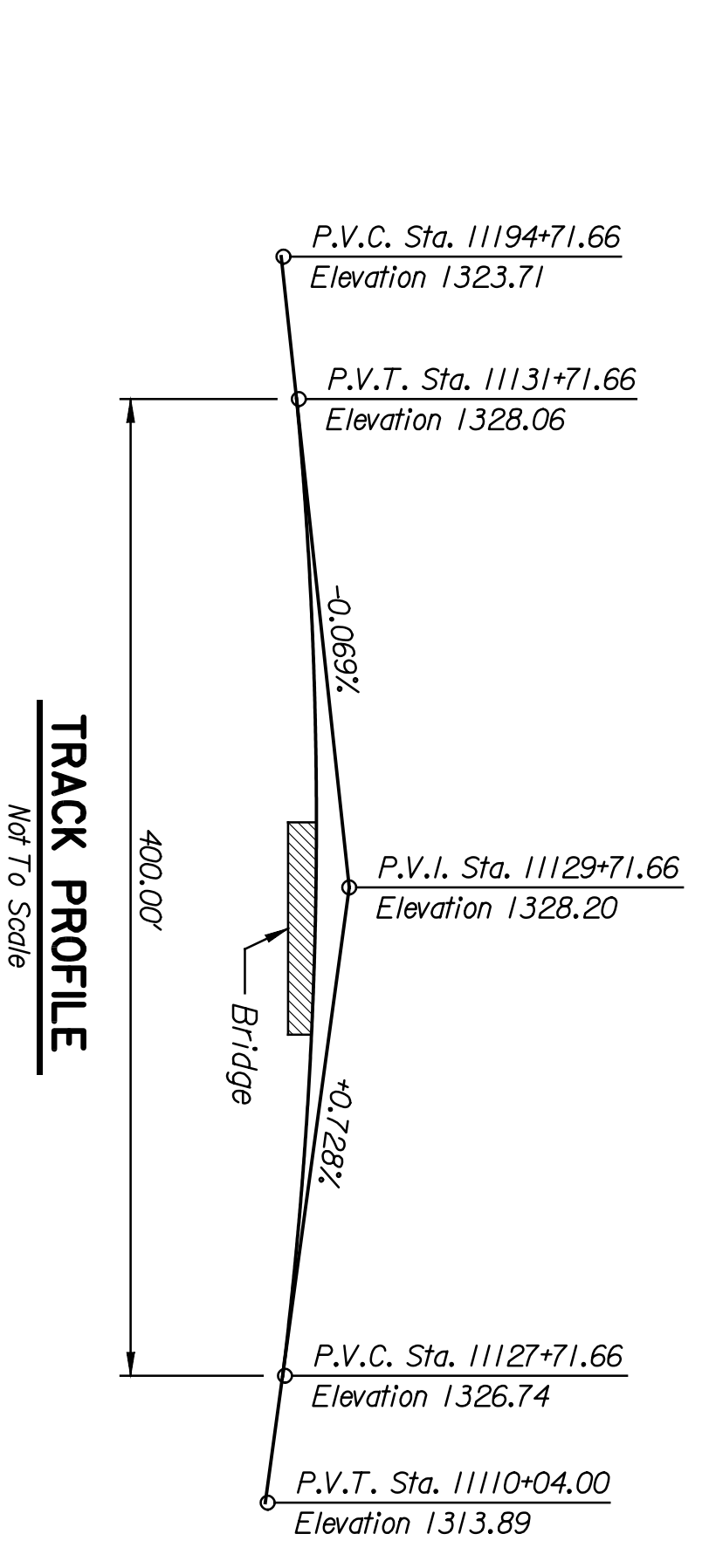


**ELEVATION**  
 Scale: 1/8" = 1'-0"

Note:  
 Roadway Elevation is looking downstream. (West)  
 Vertical clearance calculated to collision beam.



**13TH STREET PROFILE**  
 Not To Scale



**TRACK PROFILE**  
 Not To Scale

**TABLE OF ELEVATIONS FOR SUBSTRUCTURE**

DESCRIPTION	ABUT. NO. 2	ABUT. NO. 1
TOP OF RAIL	11129+98.32	11129+11.32
FF PARAPET	1327.88	1327.57
BEARING SEAT	1319.89	1319.48
BEARING	1302.64	1302.48
TOP OF FOOTING	N/A	N/A

STATE	PROJECT NO.	YEAR	SHEET NO.	TOTAL SHEETS
KANSAS	472-84071	2005	B21	

NOTES:  
 RAILROAD BRIDGE DESIGN SPECIFICATIONS:  
 AREMA Manual for Railway Engineering, 2002.  
 RAILROAD BRIDGE DESIGN LOADS:  
 Dead Load:  
 Unit Weight of Ballast, 120 pcf  
 Unit Weight of Concrete, 150 pcf  
 Unit Weight of Steel, 490 pcf  
 Live Load:  
 Cooper's E80 and Alternate Live Load with diesel impact for rolling equipment without hammer blow.  
 Seismic:  
 Site Coefficient, 1.0  
 Temperature:  
 Design Temperature, 60 degrees F  
 Design Temperature Range, 50 degrees F  
 Rise, 80 degrees F  
 Fall, Minimum Service Temperature Zone, Zone 2  
 Longitudinal Force:  
 As specified in AREMA.  
 Other Loads:  
 As specified in AREMA.

REFERENCES:  
 Railroad Alignments, Refer to RL-2-R1, 4, R2.2, R3.2-R3.4, R4.2-R4.3, R1.1, 4, R2.10, R3.17, R4.8.  
 Roadway Plan, Refer to S3.4.  
 Paving Plan, Refer to ST.1.  
 Lighting Plan, Refer to L4.01.  
 Retaining Walls, Refer to W1.1.  
 Asphalt Transition, Refer to RS.1.

**HNTEB**  
 ARCHITECTS ENGINEERS PLANNERS

CITY OF WICHITA  
 WICHITA CENTRAL CORRIDOR  
 13TH STREET  
 GENERAL PLAN AND ELEVATION

SHEET NO.	OF	SCALE AS NOTED	APP'D.
DESIGNED	EKO	DETAILED	DAL/DJL
DESIGN	CK	DATE	BY
DATE		BY	APP'D.