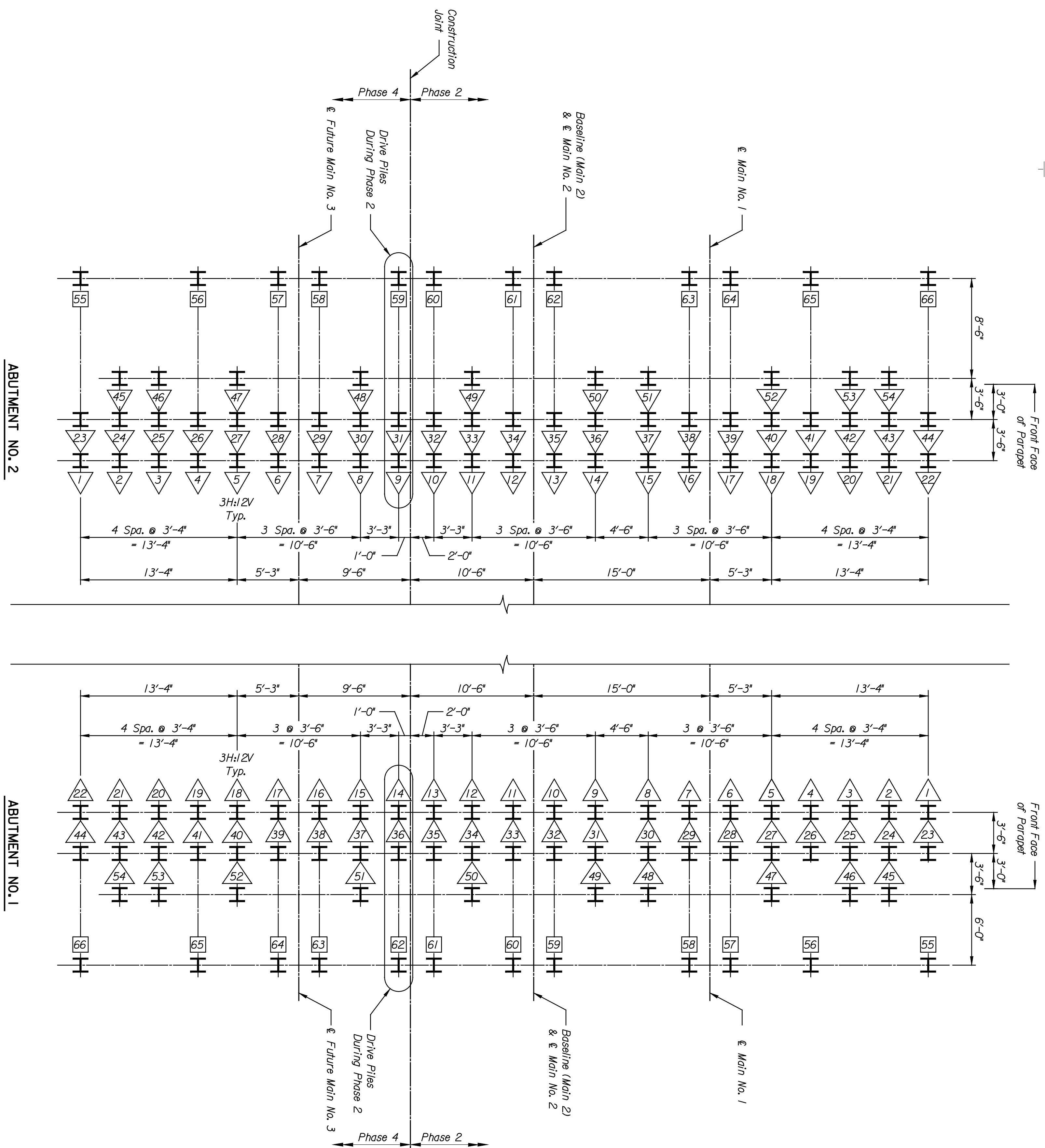


BY	DATE

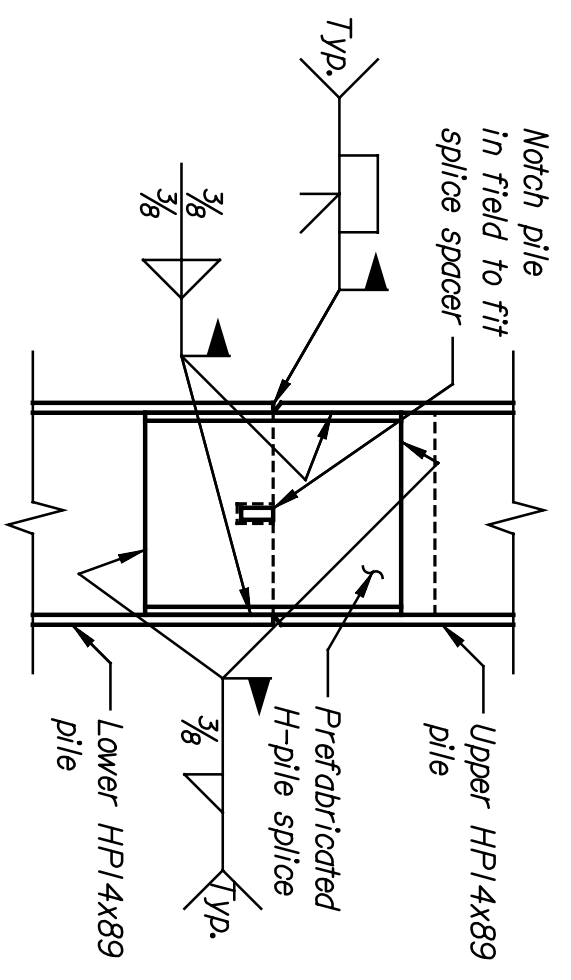
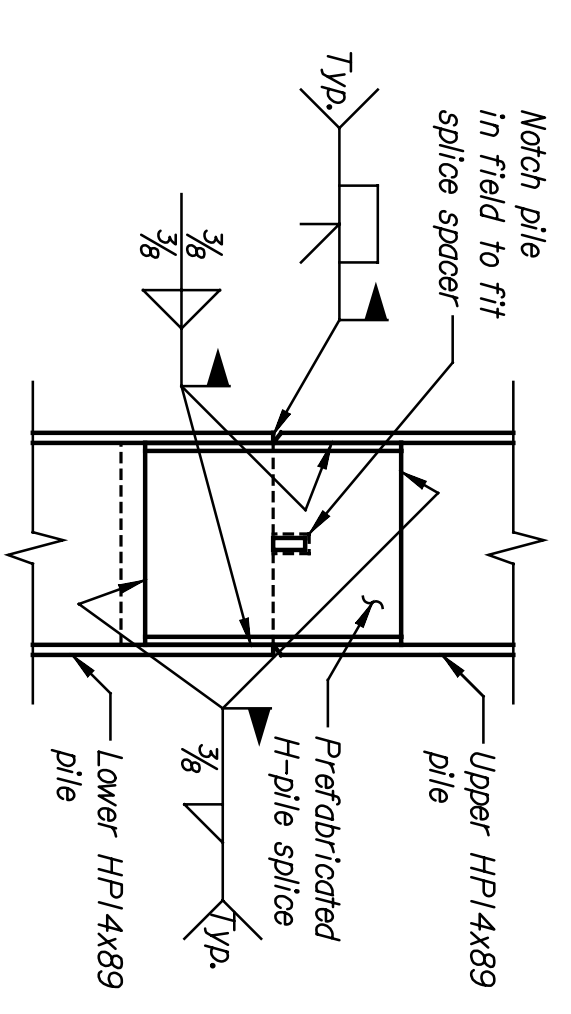
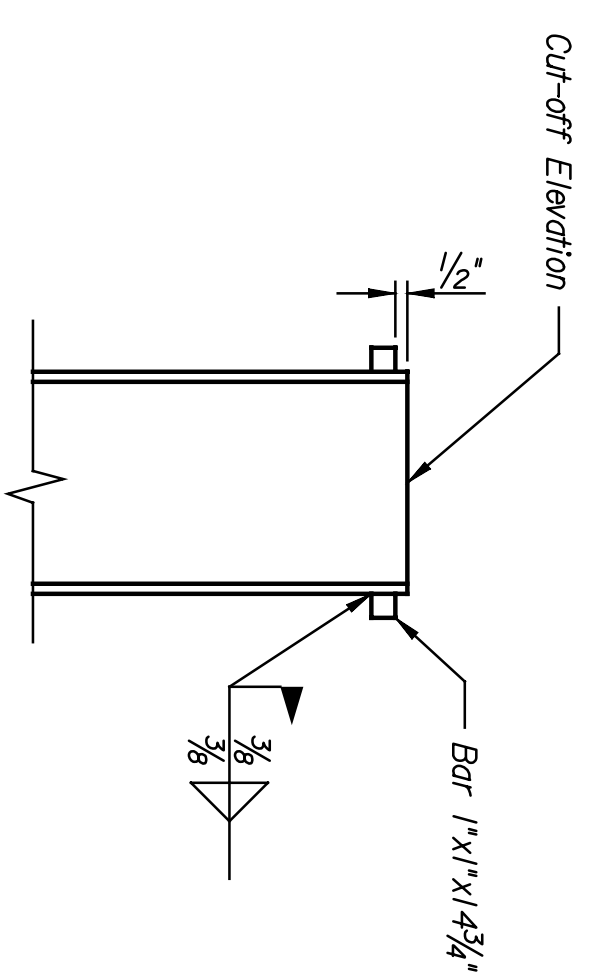
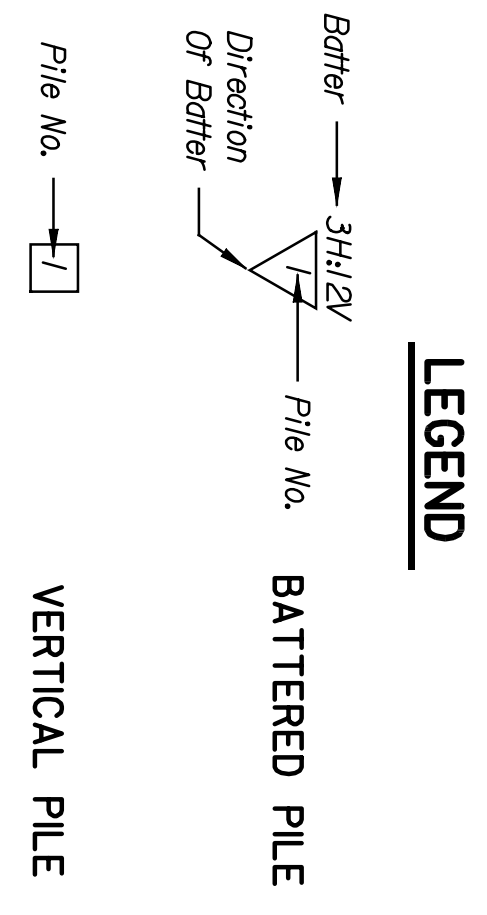
**PNTEB**  
 ARCHITECTS ENGINEERS PLANNERS

This sheet designed by:



**PILE LAYOUT**  
 Scale: 3/16" = 1'-0"

ABUTMENT NO. 2 PILE DATA						ABUTMENT NO. 1 PILE DATA							
PILE NO.	PILE TYPE	BOTTOM OF FOOTING (FT.)	PILE CUT-OFF ELEV. (FT.)	ESTIMATED TIP ELEV. (FT.)	PILE ESTIMATED LENGTH (FT.)	DESIGN PILE BEARING (TONS/PILE)	PILE NO.	PILE TYPE	BOTTOM OF FOOTING (FT.)	PILE CUT-OFF ELEV. (FT.)	ESTIMATED TIP ELEV. (FT.)	PILE ESTIMATED LENGTH (FT.)	DESIGN PILE BEARING (TONS/PILE)
1-54	HP14X89	1298.67	1300.20	1219.20	84	90	1-54	HP14X89	1298.50	1300.00	1219.00	84.00	91
55-59, 61-65	HP14X89	1298.67	1300.20	1229.20	71	76	60-60, 62-66	HP14X89	1298.50	1300.00	1242.00	58.00	60
60, 66	HP14X89	1298.67	1300.20	1219.20	91	90	55, 61	HP14X89	1298.50	1300.00	1219.00	91.00	91



**UPRIGHT ANCHOR DETAIL**  
 Not To Scale  
 Note: Applicable to Abut. No. 1 Piles 55-66 & Abut. No. 2 Piles 55-66.

Excavations may encounter contaminated groundwater and/or soils. Federal, State and City of Wichita requirements for handling contaminated materials shall be followed.

Driving shall stop when, in the opinion of the Engineer, additional driving may damage the pile. At any locations where problems are experienced, pile damage is suspected or apparent refusal occurs significantly above the minimum tip elevation, the Engineer may request that additional Dynamic Pile Analysis be performed. Test piles shall be driven as the first piles in the footing and shall be 10'-0" longer than indicated by the estimated pile tip elevation. Test piles shall remain in place and be used as production piles. Test Piles for Abutment No. 1 are: 55 and 61. Test Piles for Abutment No. 2 are: 60 and 66. Install prefabricated H-pile splices in accordance with the manufacturer's recommendations and specifications. A vibration monitoring program shall be required in accordance with the specifications during pile driving and other construction activities.

**NOTES:**  
 Steel for piles shall conform to ASTM A572, Grade 50.  
 Steel for H-pile splices shall conform to ASTM A572, Grade 50.  
 Pile spacing is shown at the bottom of the footing.  
 Pile lengths shown on the plans are estimated pile lengths for bidding purposes. Actual pile order lengths will be provided following completion of Dynamic Pile Analysis.  
 Piles shall be driven to penetrate the Wellington Shale Formation. Drive all piles to the minimum tip elevation and driving criteria determined from the Dynamic Pile Analysis performed on the test piles as outlined in the specifications. Final tip elevations will be established by the Engineer, based on meeting the driving criteria.

NO.	DATE	REVISIONS	BY	APP'D.
1				
2				
3				

**CITY OF WICHITA**  
 13TH STREET  
 FOUNDATION LAYOUT

SCALE: AS NOTED  
 SHEET NO. 05  
 DESIGNED: EKD  
 CHECKED: DMH  
 DRAWN: EKD  
 DATE: 12/15/04  
 PROJECT: WICHITA, KS  
 LINE SEGMENT 7400  
 RWSF BR. 201A