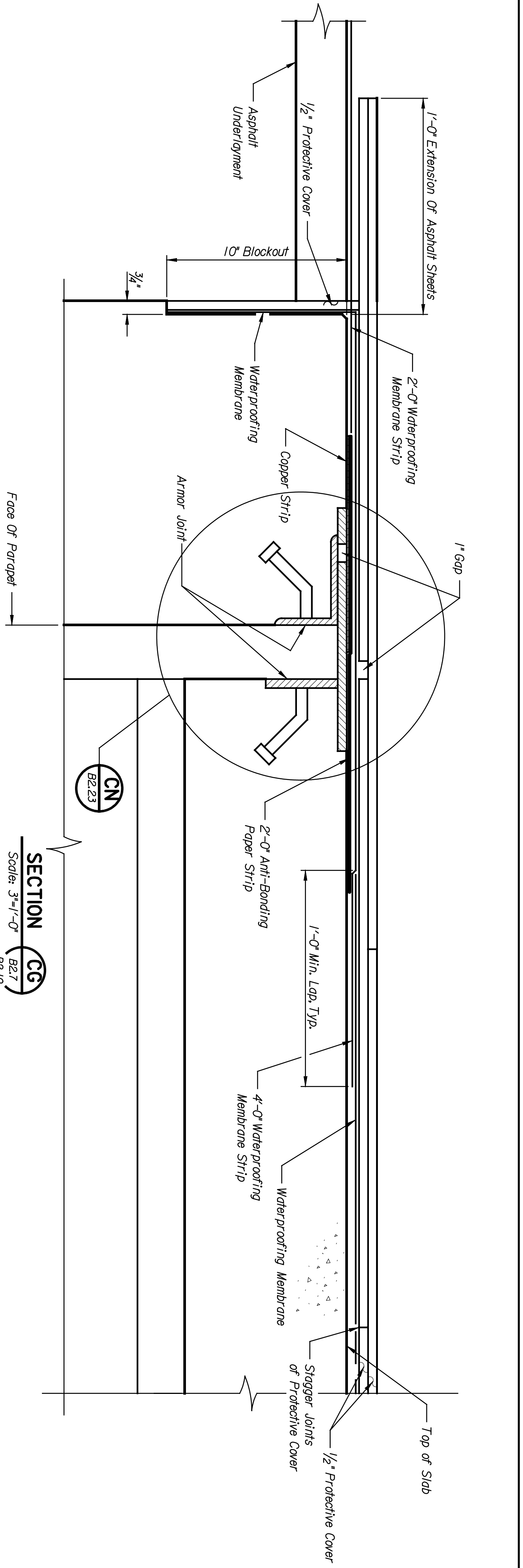
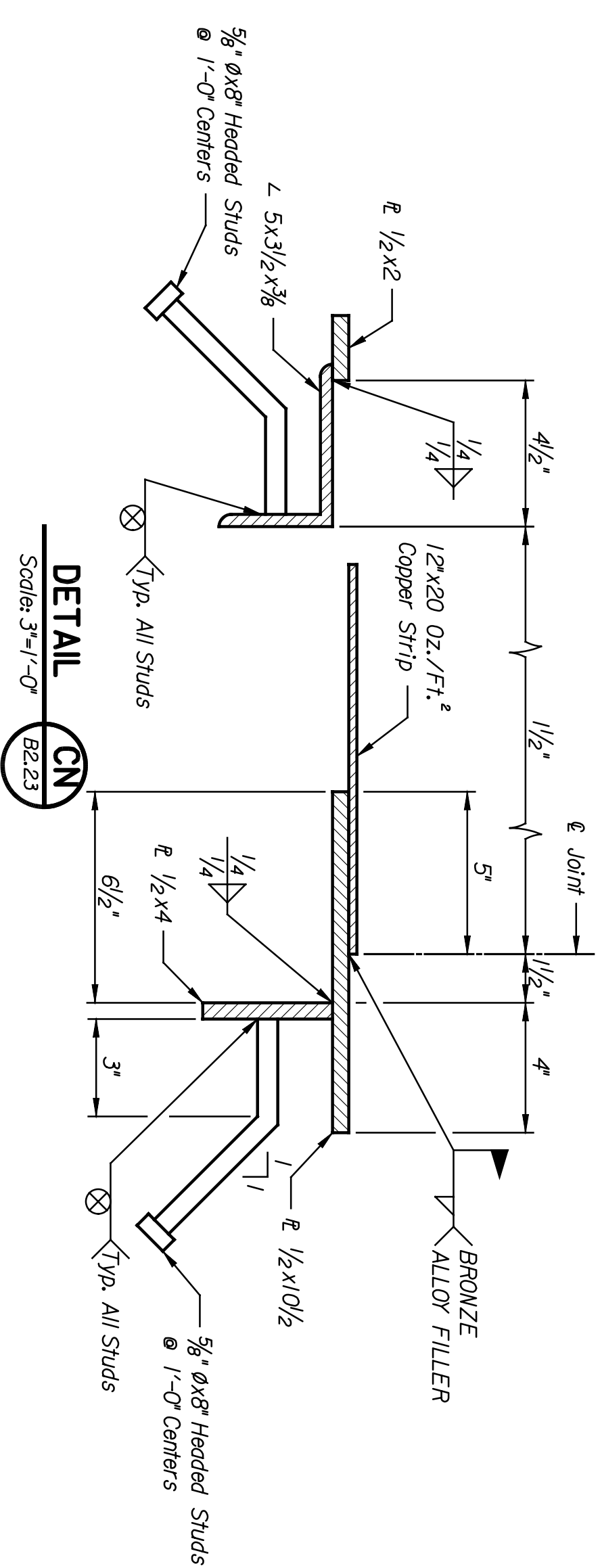


DATE	BY

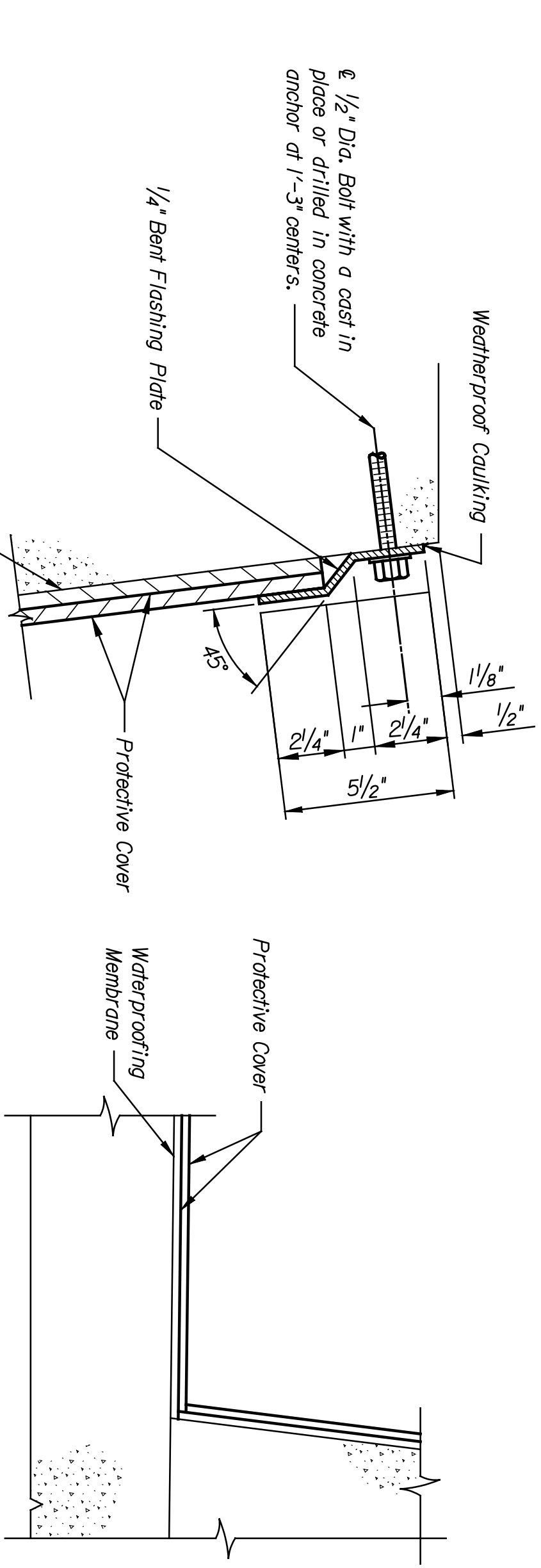
Plotted on: 04-JAN-2005 13:03 \$time\$
 djmlison Plot Queue: \$queue\$
 Plot Scale: \$scale\$ Pen Table: \$pentables\$
 Design Filename: k:\b29049\BridgesDec2004\Base Bld\13thStreet\drawings\t22.dgn.



SECTION CG
 Scale: 3/4"=1'-0"
 B2.7
 B2.10
 B2.19
 Reinforcing Not Shown For Clarity



DETAIL CN
 Scale: 3/4"=1'-0"
 B2.23



DETAIL CH
 Not To Scale
 B2.20

DETAIL CJ
 Not To Scale
 B2.20

This sheet designed by:

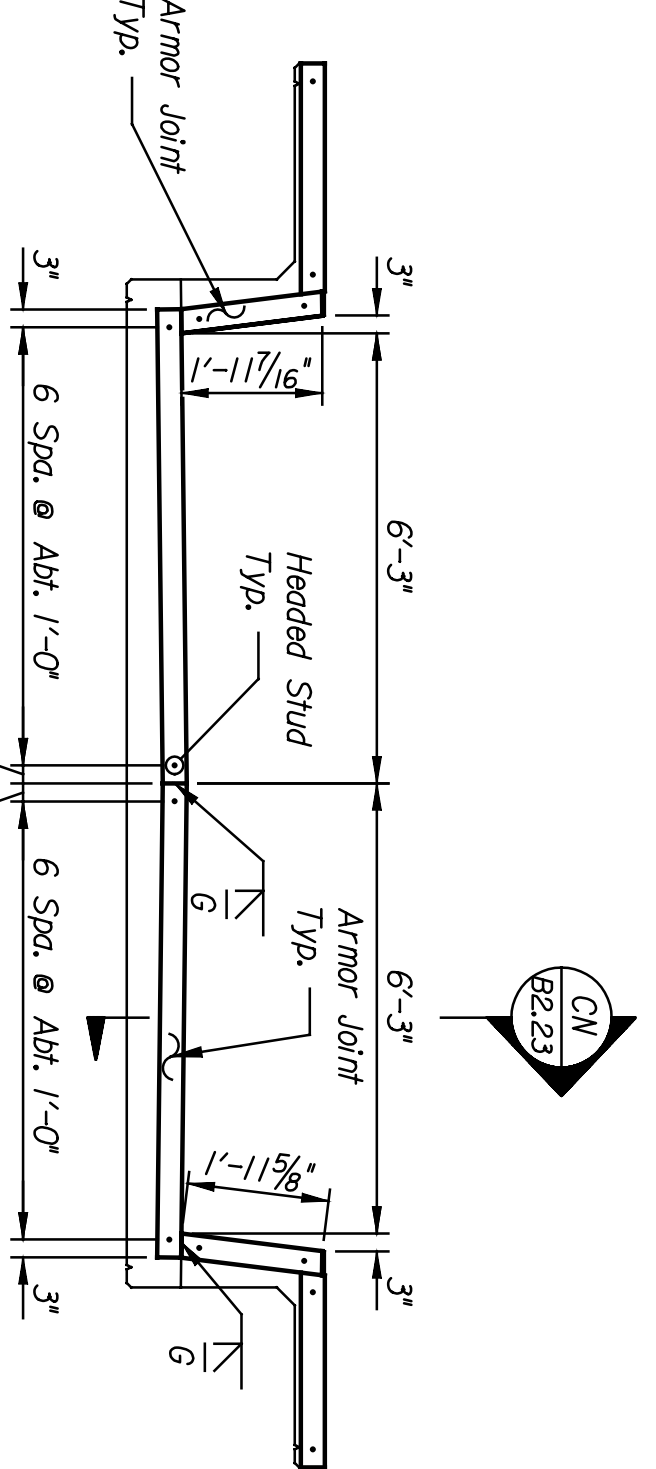


ARCHITECTS ENGINEERS PLANNERS

STATE	PROJECT NO.	YEAR	TOTAL SHEETS
KANSAS	472-84071	2005	B2.23

NOTES:

Waterproofing materials, accessories and construction shall conform to the requirements of the AEMMA Manual of Railway Engineering, Chapter 29-Waterproofing, unless noted otherwise.
 Waterproofing shall consist of 0.060-inch thick elastomeric sheets of butyl (IIR) or ethylene propylene diene terpolymer (EPDM), or a 0.100-inch thick cold, spray-applied waterproofing membrane.
 A protective cover placed over the waterproofing membrane shall consist of two layers of asphalt planks or asphaltic panels conforming to and placed in accordance with the specifications.
 Anti-bonding paper shall be impervious to bituminous materials and have a minimum mass of 5 lbs per 100 SF (0.25kg/m²).
 Concrete anchors for flashing plates shall be stainless steel, cast-in-place or drilled anchors.
 Flashing plates shall conform to ASTM A36, ASTM A709 Gr. 36 or better and shall be hot-dipped galvanized, in accordance with ASTM A123, after fabrication.
 Copper sheet or strip shall conform to ASTM B370.
 Armor joint plates and angles shall conform to ASTM A36, ASTM A709 Gr. 36 or better and shall be hot-dipped galvanized in accordance with ASTM A123 after fabrication.



ARMOR JOINT DETAIL/ELEVATION
 Scale: 3/8"=1'-0"
 Similar to Backwall.

NO.	DATE	REVISIONS	BY	APP'D.
3				
2				
1				

CITY OF WICHITA
 13TH STREET
 WATERPROOFING & DRAINAGE DETAILS

LOCATION:	WICHITA, KS
PROJECT:	RMSF BR. 201A
DATE:	NOV 2004
DESIGNED BY:	DMH
CHECKED BY:	JWH
SCALE:	AS NOTED
APPROVED BY:	